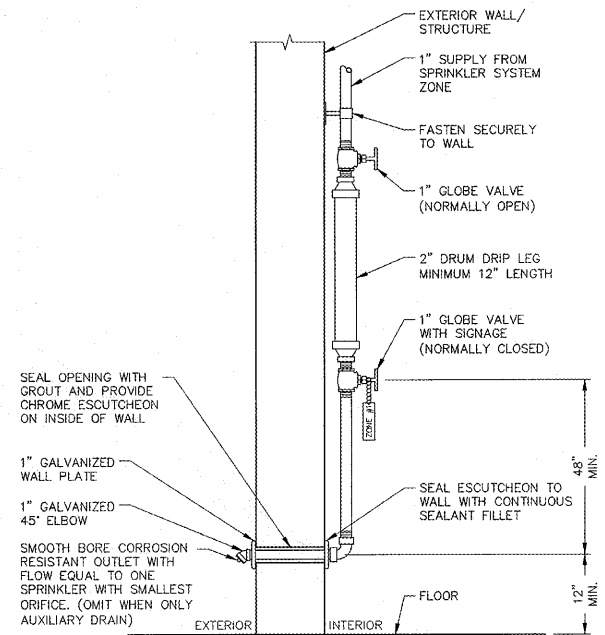


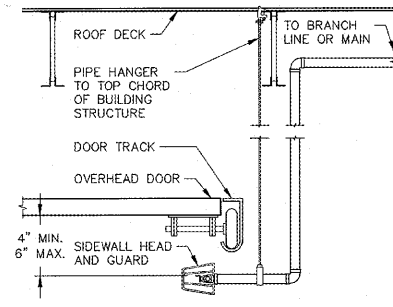
SPRINKLER SYMBOL LEGEND											
SYMBOL	SIZE	MFR	MAKE	S.I.N.	FINISH	STYLE	TEMP	K-FACTOR	SYMBOL	DESCRIPTION (SYMBOLS USED IF APPLICABLE)	
○	MATCH EXISTING	MATCH EXISTING	MATCH EXISTING	MATCH EXISTING	MATCH EXISTING	MATCH EXISTING	MATCH EXISTING	MATCH EXISTING	○	SPRINKLER MAIN RISER	
◁	1/2"	TYCO	TY-B	TY3351	BRASS	HSW	200	5.6	◇	DRY PIPE VALVE	
◁	1"	TYCO	DS-1	TY3355	WHITE	HSW	286	5.6	○ ⊕ ⊖	RISE/DROP NIPPLE	
[or	<							[CAP OR PLUG	
+									+	AUXILIARY DRAIN	
+									+	INSPECTOR'S TEST/AUXILIARY DRAIN	
+									+	SMALL HOSE VALVE	
+									+	FIRE DEPARTMENT CONNECTION (FDC)	
○									○	HYDRANT	
⊕									⊕	FIRE ALARM BELL	
◁									◁	SPRINKLER PIPE SIZE REDUCER	
/ or //									/ or //	PIPE HANGER OR TRAPEZE HANGER	
1									1	SEISMIC BRACE	
⊕									⊕	HYDRAULIC REFERENCE NODE POINT	
○									○	NEW SPRINKLER CONNECTION	
○									○	EXISTING SPRINKLER TO REMAIN OR DEMO AND PLUG/RISER ORLET	
XXX									XXX	EXISTING PIPE TO REMAIN OR DEMO	

GENERAL NOTES

- THE DESIGN SHOWN ON THESE CONTRACT DOCUMENTS HAVE BEEN PREPARED TO PROVIDE GUIDANCE FOR BIDDING ONLY. THE CONTRACTOR SHALL SUBMIT FIRE SPRINKLER SHOP DRAWINGS FOR APPROVAL BY THE AUTHORITY HAVING JURISDICTION (AHJ) AND AS REQUIRED BY SPECIFICATION SECTION 01330. CONTRACTOR SHALL BASE SHOP DRAWING DESIGN ON THE FIRE PROTECTION DRAWINGS AND SPECIFICATIONS. SPRINKLER SYSTEM SHOP DRAWINGS SHALL INCLUDE ALL NECESSARY ELEVATIONS, HANGER LOCATIONS, PIPE LENGTHS, DIMENSIONS, FABRICATION METHODS, NOTES, MATERIAL DATA, AND ANY OTHER INFORMATION REQUIRED DESCRIBING THE INTENT OF THE INSTALLATION. CONTRACTOR SHALL PROVIDE PIPE SIZES, SPRINKLER SPACING, AND ALL SYSTEM CONFIGURATIONS AS SHOWN. ANY ALTERNATES TO THE DESIGN OF THE SYSTEM OR IN MATERIALS AND EQUIPMENT USED MUST BE APPROVED IN WRITING VIA THE REQUEST FOR INFORMATION PROCESS BY THE FIRE PROTECTION ENGINEER OF RECORD PRIOR TO ANY BIDDING, FABRICATION, OR INSTALLATION.
- CONTRACTOR SHALL COORDINATE LOCATIONS OF FIRE PROTECTION COMPONENTS INCLUDING PIPING, ALARMS, DEVICES, AND DEVICES, ETC. WITH ALL ARCHITECTURAL, STRUCTURAL, MECHANICAL AND ELECTRICAL COMPONENTS. STRUCTURE TO SPRINKLERS DISCHARGE MUST BE CONSIDERED DURING SHOP DRAWING PRODUCTION AND INSTALLATION. EXTRA SPRINKLERS MAY BE REQUIRED AT NO ADDITIONAL COST TO THE OWNER. REFER TO SPECIFICATIONS FOR ADDITIONAL REQUIREMENTS.
- SUBMIT A REQUEST FOR INFORMATION (RFI) FOR ALL QUESTIONS RELATED TO THE FIRE PROTECTION DOCUMENTS.
- ROUTE ALL SPRINKLER MAINS ABOVE THE BOTTOM CHORD OF THE BAR JOISTS.
- NEUTRALIZATION/DEMISING WALLS, IF APPLICABLE, ARE SHOWN ON ARCHITECTURAL DRAWINGS. REFER TO MECHANICAL DRAWINGS FOR NEUTRALIZATION WALL PENETRATIONS.
- SPRINKLER SYSTEMS WILL BE MONITORED BY AN OFF-SITE CENTRAL STATION, INCLUDING TAMPER SWITCHES ON ALL CONTROL VALVES AND FLOW SWITCHES.
- IF APPLICABLE, THE CONTRACTOR SHALL ASSUME THAT ANY CURTAIN BOARDS OR DRAFT CURTAINS WILL BE INSTALLED PRIOR TO THE CONSTRUCTION WORK. CONTRACTOR SHALL BE RESPONSIBLE FOR PROPER PENETRATIONS OF THE CURTAIN BOARDS OR DRAFT CURTAINS AND SEALING WITH APPROVED FIRE CAULKING.
- PENETRATIONS OF RATED WALLS OR ASSEMBLIES SHALL BE FIRE CAULKED WITH APPROVED CAULKING PER METHODS REQUIRED BY THE AHJ AND PROJECT SPECIFICATIONS.
- THE FIRE PROTECTION ENGINEER OF RECORD WILL NOT BE RESPONSIBLE FOR THE CONTRACTOR'S FAILURE TO CARRY OUT THE CONSTRUCTION WORK IN ACCORDANCE WITH THE CONTRACT DOCUMENTS, NOR SHALL THEY BE REQUIRED TO SUPERVISE THE CONDUCT OF THE WORK. THE CONSTRUCTION PROCEDURES AS SET FORTH BY THE GENERAL CONTRACTOR, SUBCONTRACTORS, THEIR RESPECTIVE EMPLOYEES OR ANY OTHER PERSON AT THE JOBSITE OTHER THAN THE ENGINEERING FIRM'S OWN EMPLOYEES.
- SPRINKLER PROTECTION IS REQUIRED ABOVE THE ELECTRICAL ROOMS. NO MAIN PIPING SHALL PENETRATE THE ELECTRICAL ROOMS.
- THE CONTRACTOR MUST REVIEW ALL CONSTRUCTION DOCUMENTS PRIOR TO BID. SHOULD MODIFICATION TO THESE PLANS BECOME NECESSARY TO PROPERLY COORDINATE THE SYSTEM WITH OTHER TRADES, IT WILL BE THE CONTRACTOR'S RESPONSIBILITY TO OBTAIN APPROVAL OF THESE CHANGES BY THE AHJ AND THE FIRE PROTECTION ENGINEER OF RECORD. IN ADDITION TO OBTAINING THE NECESSARY APPROVALS THE CONTRACTOR MUST MAKE NOTE OF ALL FIELD OR COORDINATION CHANGES ON THE INSTALLATION DRAWINGS. ONCE COMPLETE, THE CONTRACTOR SHALL SUPPLY ONE COPY OF THE AS-BUILT MAY 2019 DRAWINGS TO THE FIRE PROTECTION ENGINEER OF RECORD FOR THEIR USE.
- THE CONTRACTOR SHALL DIVERT ALL DRAIN AND INSPECTOR TEST CONNECTION DISCHARGE AWAY FROM FINISHED SURFACES AND PIPE TO APPROVED DRAIN LOCATIONS. THE CONTRACTOR WILL BE BACK CHARGED FOR ANY REPAIR, REPLACEMENT, OR CLEANING OF RUST STAINS ON PAVEMENT, CONCRETE DUE TO WATER DISCHARGE FOR SPRINKLER SYSTEM DRAIN DOWNS.
- WHEN SYSTEM PRESSURES EXCEED 100 PSI, REFER TO NFPA FOR MAXIMUM ARM OVER LENGTHS AND HANGING INSTRUCTIONS.
- PROVIDE A MINIMUM OF 5 PSI SAFETY FACTOR FOR HYDRAULIC CALCULATIONS OF SPRINKLER SYSTEMS. USE HIGHER SAFETY FACTOR WHEN REQUIRED BY THE AUTHORITY HAVING JURISDICTION.

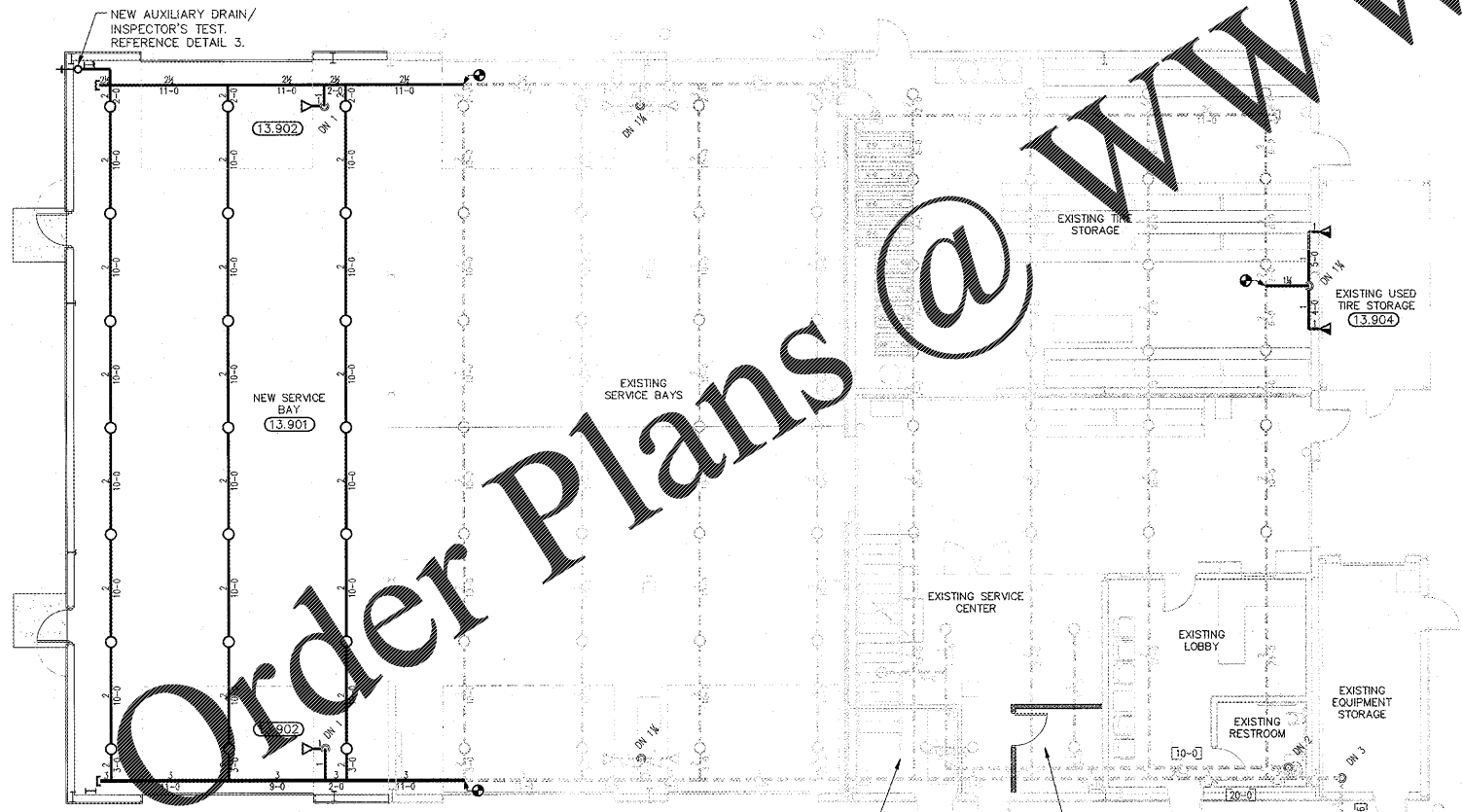


3 AUXILIARY DRAIN/
INSPECTOR'S TEST/DRUM DRIP
NTS 10.30.07 F12



2 ROLL-UP DOOR
NTS F32

GENERAL PIPING AND DEMOLITION NOTES	
1.	CONTRACTOR MUST VISIT THE BUILDING TO DETERMINE THE FULL EXTENT OF THE EXISTING FIRE PROTECTION WORK AND EXISTING CONDITIONS, BECOME TOTALLY FAMILIAR WITH THE DISCONNECTIONS, REMOVALS, RELOCATIONS AND/OR RECONNECTIONS OF EXISTING FIRE PROTECTION EQUIPMENT REQUIRED, AND CONDITIONS IN THE PROPOSAL FOR THIS PROJECT. NO EXTRA COMPENSATION WILL BE PAID FOR LACK OF SUCH DETERMINATION, FAMILIARIZATION, AND/OR ALLOWANCE.
2.	UNLESS NOTED OTHERWISE, DISCONNECT AND REMOVE ALL EXISTING FIRE PROTECTION COMPONENTS NOT INTENDED TO BE REUSED.
3.	REMOVE ALL DEMOLITION MATERIALS AND DEBRIS TO AN APPROVED DUMPING SITE AND CLEAN ALL FIRE PROTECTION WORK PRIOR TO PROJECT COMPLETION.
4.	PERFORM ALL WORK ACCORDING TO THE PROJECT PHASING SCHEDULE INFORMATION FOR THIS PROJECT. PROVIDE ALL NECESSARY FIRE PROTECTION WORK, TEMPORARY AND/OR OTHERWISE, AND USE WHATEVER MEANS NECESSARY, TO CONFORM TO THE REQUIRED CONSTRUCTION PHASING OF THE PROJECT.
5.	CONTRACTOR IS RESPONSIBLE FOR REPAIRING OR REPLACING ITEMS DAMAGED DURING DEMOLITION AND CONSTRUCTION.
6.	CONTRACTOR SHALL PATCH ALL HOLES TO MATCH ADJACENT SURFACES LEFT UNUSED AFTER EXISTING SPRINKLER PIPING OR EQUIPMENT IS REMOVED AND VACATED FROM THESE HOLES.
7.	CONTRACTOR IS RESPONSIBLE FOR PROVIDING AND MAINTAINING FIRE DEPARTMENT ACCESS ROADS THROUGHOUT THE PROJECT.
8.	SPRINKLER SYSTEMS NOT ASSOCIATED WITH THE DEMOLITION SHALL BE LEFT IN SERVICE.
9.	ALL WORK SHALL BE PERFORMED SO AS TO NOT INTERRUPT SERVICE. THE CONTRACTOR SHALL PROPERLY NOTIFY THE LANDLORD, THE LESSOR AND THE ADJACENT TENANTS A MINIMUM OF 48 HOURS IN ADVANCE BEFORE PROCEEDING WITH THIS WORK. ALL WORK SHALL BE SCHEDULED IN ADVANCE.
10.	ALL SYSTEMS TO BE LEFT IN SERVICE PRIOR TO THE END OF EACH WORKDAY.



1 OVERALL FIRE SPRINKLER PLAN
1/8"=1'-0"

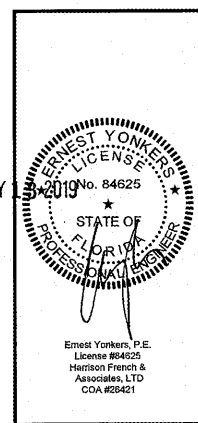
FIRE PROTECTION KEY NOTES	
13.901.	PROVIDE NEW UPRIGHT SPRINKLER PROTECTION AS SHOWN AND TIE INTO EXISTING SPRINKLER SYSTEM. HANG PIPING PER NFPA 13 REQUIREMENTS.
13.902.	PROVIDE SPRINKLER PROTECTION BENEATH OVERHEAD DOORS. REFERENCE DETAIL 2.
13.903.	COORDINATE LOCATIONS OF EXISTING SPRINKLERS WITH NEW WALL CONSTRUCTION. RELOCATE EXISTING SPRINKLERS AND/OR PROVIDE NEW SPRINKLERS AS REQUIRED PER NFPA 13 SPACING REQUIREMENTS.
13.904.	PROVIDE DRY HORIZONTAL SPRINKLER PROTECTION BENEATH TIRE STORAGE CANOPY AS SHOWN.

APPLICABLE CODES	
NFPA STANDARDS	EDITION
NFPA 13	2013
OTHER STANDARDS (IF APPLICABLE)	
N/A (REFER TO SHEET C1 FOR APPLICABLE BUILDING CODES)	

STIPULATION FOR REUSE
 THIS DOCUMENT HAS BEEN PREPARED FOR THE PROJECT AND SITE SPECIFICALLY IDENTIFIED. IT IS NOT TO BE REUSED FOR ANY OTHER PROJECT WITHOUT THE WRITTEN PERMISSION OF HARRISON FRENCH & ASSOCIATES, LTD. ANY REUSE OF THIS DOCUMENT FOR ANY OTHER PROJECT WITHOUT THE WRITTEN PERMISSION OF HARRISON FRENCH & ASSOCIATES, LTD. IS PROHIBITED. HARRISON FRENCH & ASSOCIATES, LTD. SHALL BE RESPONSIBLE FOR ANY REUSE OF THIS DOCUMENT FOR ANY OTHER PROJECT WITHOUT THE WRITTEN PERMISSION OF HARRISON FRENCH & ASSOCIATES, LTD.

200 S KINGS HWY
FORT PIERCE, FL 34945
 SPEEDCO REBRANDING &
LIGHT MECHANICAL ADDITION
 PROJECT NUMBER: 03-19-0467

Loves
 Travel Stop &
 Country Stores



ISSUE BLOCK	

STORE NO.	467
DOCUMENT DATE:	05/14/19
CHECKED BY:	EDY
DRAWN BY:	BLB
PROTO CYCLE:	

FIRE SPRINKLER PLAN & NOTES

SHEET:
YF1