



HARRISON FRENCH
ASSOCIATES, L.P.

1705 S. Walton Blvd., Suite 3
Bentonville, Arkansas 72712
1 479 273 7780
1 888 520 9685
www.hfs-ae.com

STIPULATION FOR REUSE
THIS DOCUMENT IS THE PROPERTY OF HARRISON FRENCH ASSOCIATES, L.P. (HFA) AND IS TO BE USED ONLY FOR THE PROJECT AND SITE SPECIFICALLY IDENTIFIED HEREIN. IT IS NOT TO BE REPRODUCED, COPIED, OR TRANSMITTED IN ANY FORM OR BY ANY MEANS, ELECTRONIC OR MECHANICAL, INCLUDING PHOTOCOPYING, RECORDING, OR BY ANY INFORMATION STORAGE AND RETRIEVAL SYSTEM, WITHOUT THE WRITTEN PERMISSION OF HFA. ANY REUSE OF THIS DOCUMENT FOR ANY OTHER PROJECT OR SITE WITHOUT THE WRITTEN PERMISSION OF HFA IS STRICTLY PROHIBITED. HFA SHALL BE RESPONSIBLE FOR THE PROTECTION OF THIS DOCUMENT AND ITS CONTENTS.

200 S KING'S HWY
FORT PIERCE, FL 34945
SPEEDCO REMODEL
PROJECT NUMBER: 03-19-80467

Loves
Travel Stop &
Country Stores



Daniel Ryan, C.E., P.E.
License #79462
Harrison French &
Associates, L.P.
C/O# 528121

ISSUE BLOCK		
	OTP	08-13-2019
3	ADD-3	11-22-2019
4	ADD-4	4-22-2020

STORE NO. 467
DOCUMENT DATE: 8/13/19
CHECKED BY: SAB
DRAWN BY: ENH
PROTO CYCLE:

GRADING
PLAN

SHEET:
YCV2



PROPOSED

- PROPERTY LINE
- DAKLINE
- XXX SPOT ELEVATION
- FFE FINISHED FLOOR ELEVATION
- FG FINISHED GRADE
- G GUTTER
- TC TOP OF CURB
- EG EXISTING GRADE
- PROPOSED BOLLARD SEE ARCH. PLANS

GENERAL GRADING NOTES

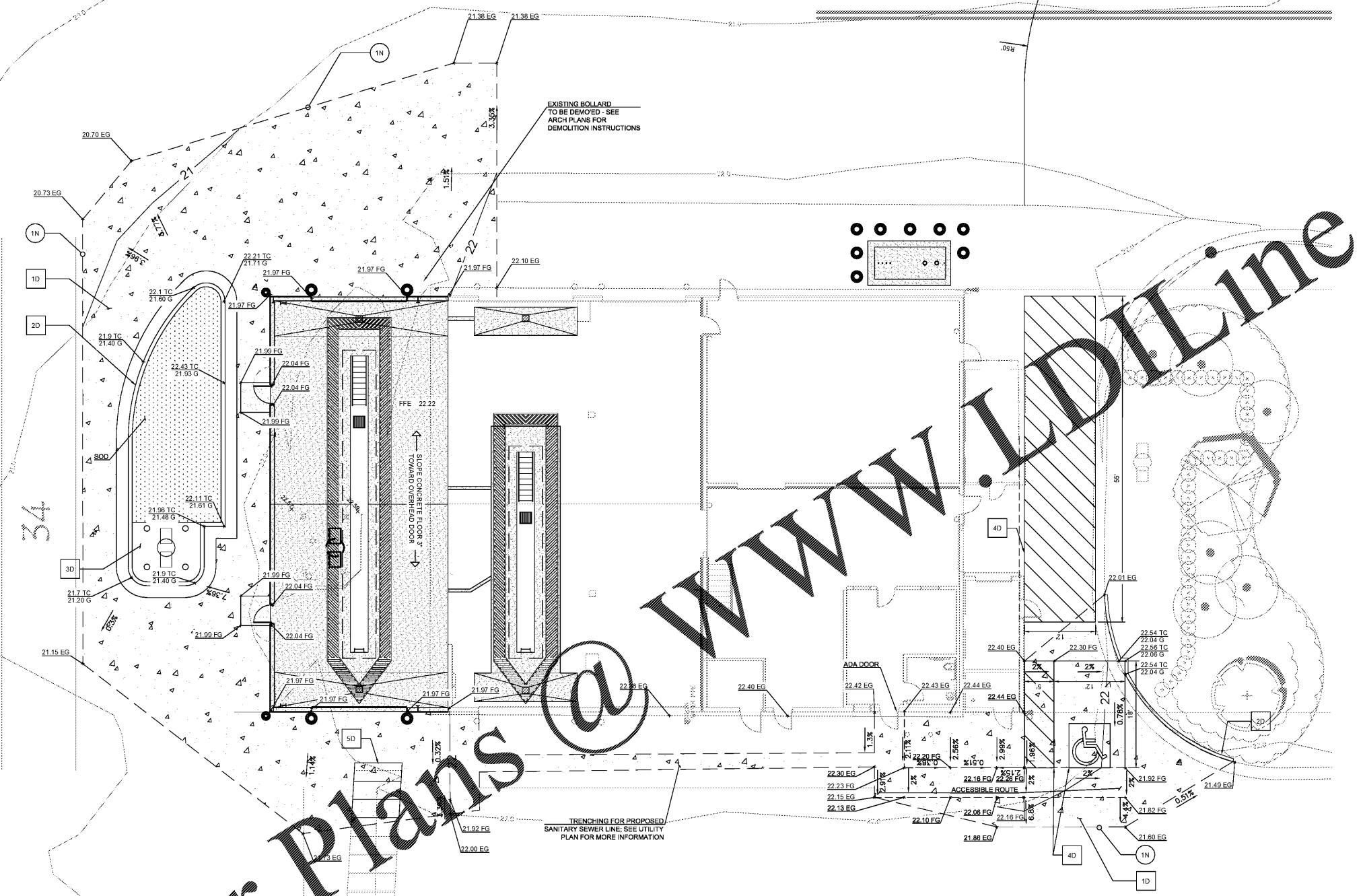
1. CONTRACTOR SHALL ENSURE POSITIVE DRAINAGE AWAY FROM BUILDINGS FOR PAVED AND UNPAVED AREAS.

NOTES

- 1N. SAWCUT LINE/MATCH EXISTING ELEVATIONS

DETAILS

- 1D. CONCRETE PAVEMENT SEE DETAIL 1/ SHEET YCV3
- 2D. TYPE 'B' CONCRETE CURB & GUTTER SEE DETAIL 2/ SHEET YCV3
- 3D. CONCRETE SIDEWALK SEE DETAIL 4/ YCV3
- 4D. PARKING LOT STRIPING SEE DETAIL 6/ YCV3
- 5D. CROSSWALK MARKING SEE DETAIL 8/ YCV3



Order Plans @ www.JDLine.com