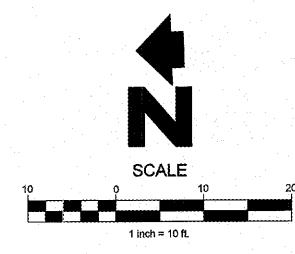
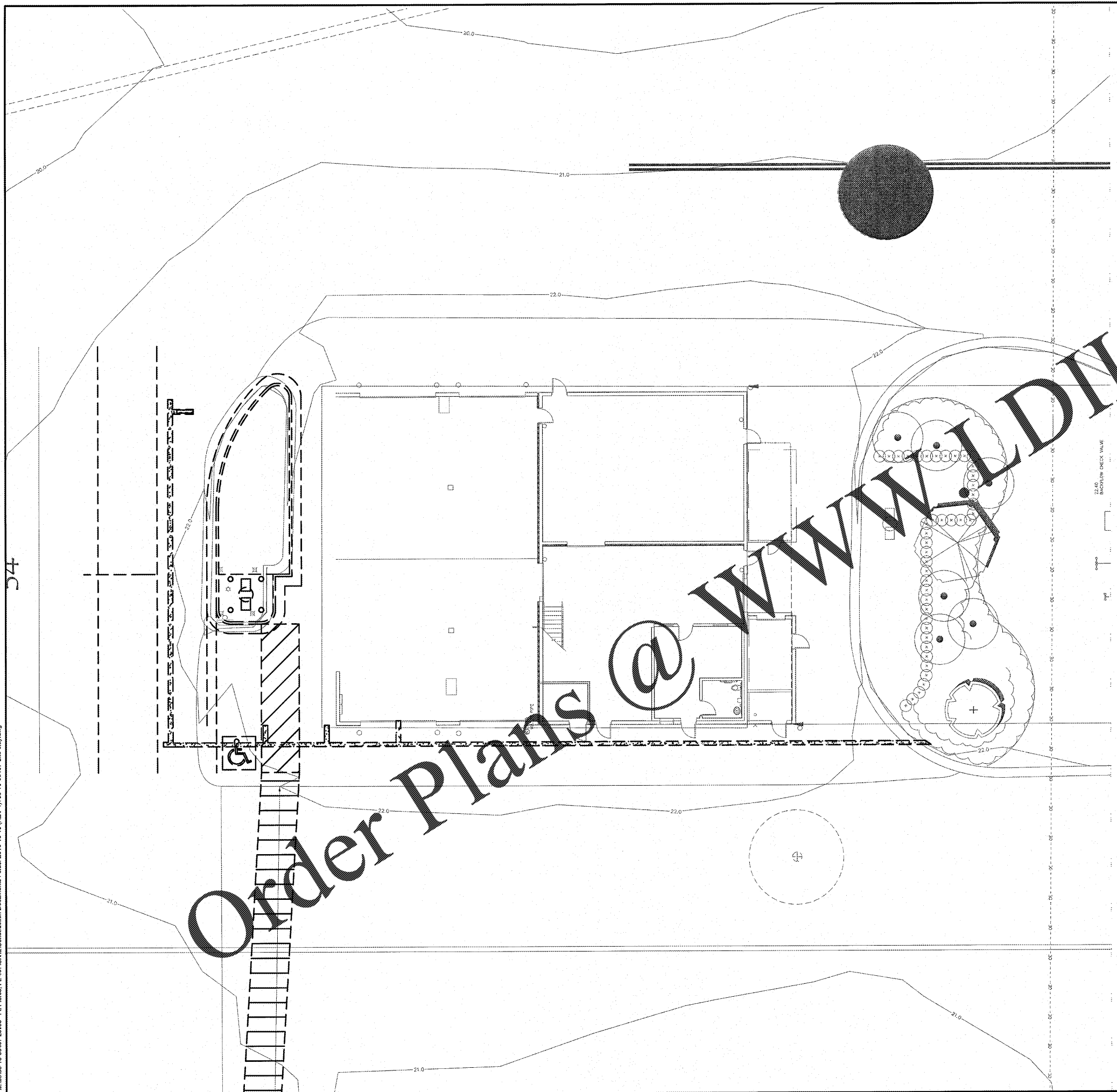


Nov22,2019:8:28am - User:wendy.wert
 M:\03\03-19-60467 Loves - Ft. Pierce, FL 487\CIVIL\Construction Documents\Folder\2019-10-15 (REV-1) 03-19-60467 Site only.dwg



HFA
 ARCHITECTS
 ENGINEERS
 INTERIORS

HARRISON FRENCH
 & ASSOCIATES, LTD

1705 S. Walkon Blvd., Suite 3
 Bentonville, Arkansas 72712
 t 479.273.7780
 f 888.520.9685
 www.hfa-ae.com

STIPULATION FOR REUSE

THE DRAWING WAS PREPARED FOR THE
 OWNERS USE ONLY. IT IS NOT TO BE
 REPRODUCED OR TRANSMITTED IN ANY
 FORM OR BY ANY MEANS, ELECTRONIC
 OR MECHANICAL, INCLUDING PHOTOCOPYING,
 RECORDING, OR BY ANY INFORMATION
 STORAGE AND RETRIEVAL SYSTEM, WITHOUT
 THE WRITTEN PERMISSION OF THE ARCHITECT.
 ANY REUSE OF THIS DRAWING FOR
 ANY OTHER PROJECT WITHOUT THE
 AUTHORIZATION OF THE ARCHITECT IS
 PROHIBITED AND MAY BE CONTRARY TO
 THE LAW.

200 S KINGS HWY
 FORT PIERCE, FL 34945

SPEEDCO REMODEL

PROJECT NUMBER: 03-19-60467

Loves
 Travel Stop &
 Country Stores

ISSUE BLOCK		
OTP	08-13-2019	
ADD-3	11-22-2018	

STORE NO.	467
DOCUMENT DATE:	8/13/18
CHECKED BY:	SAB
DRAWN BY:	SSA
PROTO CYCLE:	

SURVEY PROVIDED BY:

CULPEPPER & TERPENING, INC.
 2980 S 25TH ST
 FORT PIERCE, FL 34981
 772-464-3537

EXISTING GRADES

SHEET:
YCV1