

### LIGHTING FIXTURE SCHEDULE

TYPE	MANUFACTURER	CATALOG #	DESCRIPTION	VOLTS	WATTS	MOUNTING	REMARKS	FURNISHED BY
EM3	LITHONIA	ELA LED T WP M12	EMERGENCY LIGHT	9.6	1	CEILING / WALL	REMOTE EMERGENCY FIXTURE HEADS	OWNER
GG	US LED	DS-402U-2-UNV-QB3-NC-1-L	LED WALL PACK	120	42.5	WALL	WALL PACK	OWNER
MI	BODINE	ELI-S-250	EMERGENCY LIGHTING INVERTER	120	250	SURFACE	90 MINUTE EMERGENCY INVERTER	OWNER
T4E	EATON	4SNLED-LD5-64HL-UNV-L850-CD1-EL14W-LOV-U	4' LINEAR LED STRIP LIGHT, EMERGENCY	120	43	SURFACE	MOUNT TO BOTTOM OF METAL FRAMING	OWNER
TC	EATON	HBLD-LD5-18SE-W-UNV-L850-ED2-U	LED HIGH BAY	120	131	PENDANT	PENDANT MOUNT AT 18'-0" TO BOTTOM OF FIXTURE	OWNER
TCD	EATON	HBLD-LD5-18SE-W-UNV-L850-CD2-U	DIMMABLE LED HIGH BAY	120	131	PENDANT	PENDANT MOUNT AT 18'-0" TO BOTTOM OF FIXTURE	OWNER
TD	CROUSE-HINDS	MLL4/UNV1 TF / DP1050MTK	EXPLOSION PROOF FIXTURE / MOUNTING BRACKET	120	54.5	SURFACE	USE CEILING MOUNT BRACKET	OWNER
TDE	CROUSE-HINDS	MLL4/UNV1 S903 TF EM / DP1050MTK	EMERGENCY EXPLOSION PROOF FIXTURE / MOUNTING BRACKET	120	54.5	SURFACE	USE CEILING MOUNT BRACKET	OWNER
X	LITHONIA	LHQM LED R HO M6	EXIT SIGN W/ HO BATTERY AND BUG EYES	120	3	CEILING / WALL	EMERGENCY FIXTURE WITH 90 MINUTE BATTERY BACK-UP	OWNER

### PANELBOARD NOTES ( )

- (1) TERMINATE GROUND ON ISOLATED GROUND BUS.
- (2) INSTALL LOCKING DEVICE FURNISHED WITH PANELBOARD (LOCK-OFF FOR MAINTENANCE).
- (3) INSTALL LOCKING DEVICE FURNISHED WITH PANELBOARD (LOCK-ON FOR CRITICAL LOAD).
- (4) GFI BREAKER FOR PERSONNEL PROTECTION (5 mA).
- (5) GFI BREAKER FOR EQUIPMENT PROTECTION (30 mA).
- (6) CONDUCTOR SIZE HAS BEEN INCREASED FOR VOLTAGE DROP. SIZE EQUIPMENT GROUNDING CONDUCTOR PROPORTIONALLY PER NEC.
- (7) FACTORY WIRED TO LOAD.
- (8) THRU CONNECTOR.
- (9) EXISTING CIRCUIT BREAKER TO REMAIN. VERIFY CONDITION OF CIRCUIT BREAKER TO ENSURE THAT IT IS OPERATIONAL AND MEETS ALL U.L. RATINGS.
- (10) EXISTING CIRCUIT TO REMAIN.
- (11) PROVIDE HANDLE LOCK OFF DEVICE TO LOCK "SPARE" CIRCUIT BREAKER IN THE "OFF" POSITION. IF CIRCUIT BREAKER IS IDENTIFIED AS "EXISTING" FIELD VERIFY CIRCUIT BREAKER INDICATED IS NOT CONNECTED TO ANY LOAD AND UPDATE PANELBOARD CIRCUIT DIRECTORY IDENTIFYING CIRCUIT AS "SPARE".
- (12) TRACE EXISTING CIRCUIT. IDENTIFY LOAD AND PROVIDE COMPLETE TYPEWRITTEN PANELBOARD IDENTIFICATION SCHEDULE AND PLACE ON INTERIOR OF PANELBOARD DOOR. IF CIRCUIT IS A "SPARE" THEN REFER TO PANELBOARD NOTE (11).
- (13) PROVIDE LISTED HANDLE THE AS INDICATED FOR MULTIWIRE BRANCH CIRCUIT.
- (14) REFER TO ONE-LINE DIAGRAM FOR WIRE SIZES.

ALL SWITCHBOARDS AND PANELBOARDS SHALL HAVE A COMMERCIAL PRODUCED PERMANENT LABEL APPLIED TO WARN OF POTENTIAL ARC FLASH HAZARDS. IN ACCORDANCE WITH NEC 110.16 AND NFPA 70E. LABELING MAY BE COMPLETED BY EQUIPMENT MANUFACTURER, EQUIPMENT VENDOR/SUPPLIER, OR THE CONTRACTOR. THE CONTRACTOR SHALL VERIFY THAT ALL SWITCHBOARDS AND PANELBOARDS ARE PROPERLY LABELED IN THE FIELD.

EXISTING CIRCUITRY IS BASED ON ORIGINAL BUILDING PLANS. IF EXISTING CIRCUITS TO REMAIN ARE NOT AS SHOWN ON THE PANELBOARD SCHEDULES, ARRANGE NEW CIRCUITS BASED UPON PRESENT LOCATION OF EXISTING CIRCUITS TO REMAIN SHOWN IN LOWERCASE.

EC SHALL MATCH TYPE AND AIR RATINGS OF EXISTING CIRCUIT BREAKERS AND MAINTAIN SERIES RATING OF BREAKERS.

#### NEW PANELBOARD

208Y/120V, 3PH, 4W  
100A M.L.O.  
10,000 AIC

SERVES: TIRE SHOP  
LOCATION: SERVICE BAY  
FED FROM: PANEL LP4  
OVERCURRENT DEVICE: 100A

SURFACE MOUNT  
GROUND BAR

CK	LOAD SERVED	WIRE	BRKR	PL	PHASE A	PHASE B	PHASE C	PL	BRKR	WIRE	LOAD SERVED	CK	
1	LTG - SERVICE BAY EMERG. (N)	12 20 1	0.39	0.90				1	20	12	REC - SERVICE BAY (N)	2	
3	LTG - OIL PIT (N)	12 20 1			0.76	1.08		1	20	12	REC - SERVICE BAY (N)	4	
5	LTG - OIL PIT (N)	12 20 1					0.44	0.36	1	20	12	MADDENCO (N)	6
7	ADO-5 (N)	12 20 2	0.56	1.20					1	20	12	OIL PIT SUMP PUMP (N,4)	8
9	208V/1PH				0.56	1.20			1	20	12	OIL PIT SUMP PUMP (N,4)	10
11	ADO-6 (N)	12 20 2					0.56	1.20	1	20	12	FUEL MONITORING PANEL (N)	12
13	208V/1PH		0.56	0.53					1	20	12	EF-3 (N)	14
15	SPARE (N)	-- 20 1			0.00	1.66			1	20	12	EF-2 (N)	16
17	SPARE (N)	-- 20 1					0.00	1.66	1	20	12	EF-1 (N)	18
19	SPARE (N)	-- 20 1	0.00	0.00					1	20	12	SPARE (N)	20
21	SPARE (N)	-- 20 1			0.00	0.00			1	20	12	SPARE (N)	22
23	SPARE (N)	-- 20 1					0.00	0.00	1	20	12	SPARE (N)	24
25	SPACE												26
27	OIL FILTER CRUSHER (N,2)	12 20 2	1.37	0.00									28
29	208V/1PH						0.00	0.00					30
TOTAL CONNECTED					5.51	6.63	4.21		KVA				
TOTAL CONNECTED					45.9	55.2	35.1		AMPS				
TOTAL LOAD					16.4	19.4	12.4		KVA				
TOTAL LOAD					17.4	21.4	13.4		AMPS				

PER NEC ARTICLE 220 FEEDER LOAD

#### EXISTING PANELBOARD

208Y/120V, 3PH, 4W  
400A M.L.O.

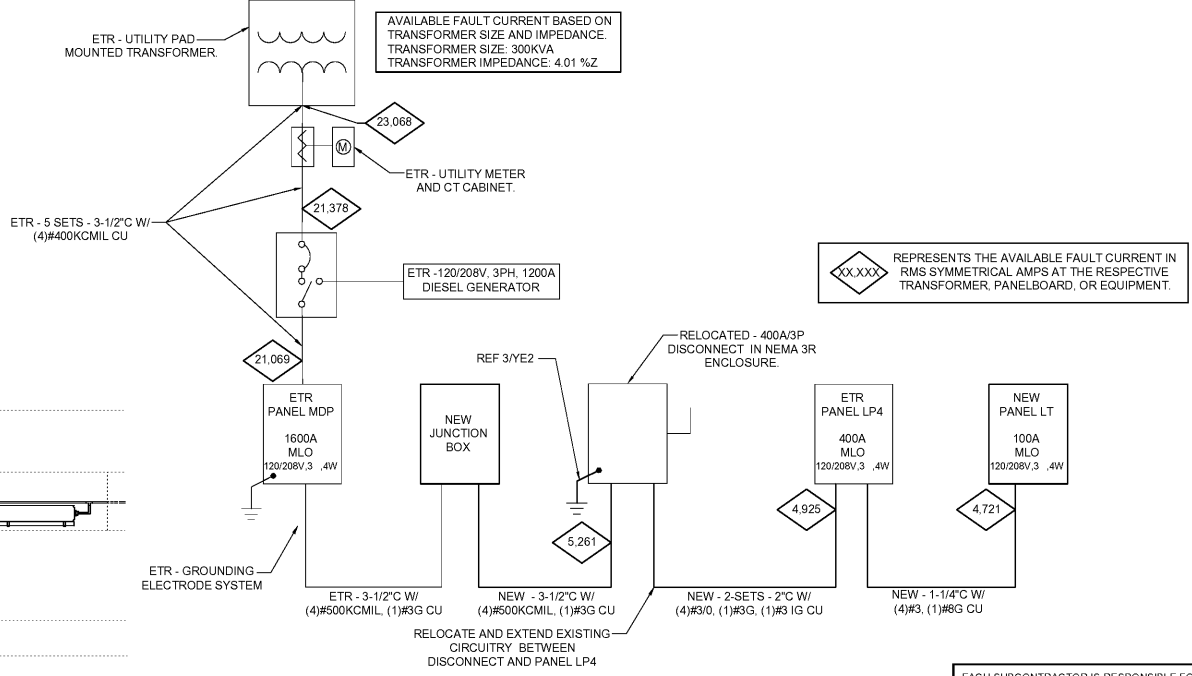
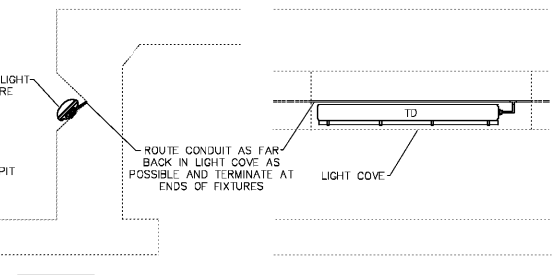
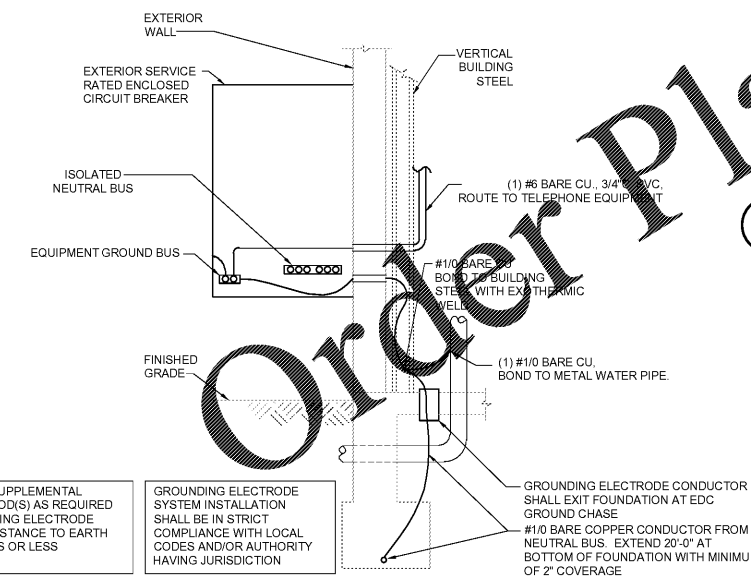
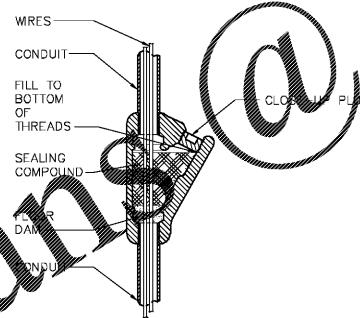
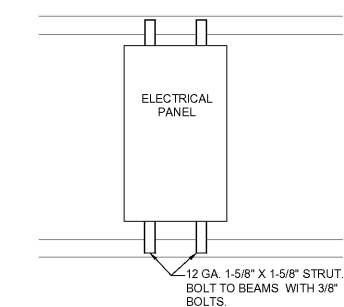
SERVES: TIRE SHOP  
LOCATION: SERVICE BAY  
FED FROM: EXTERIOR DISCONNECT  
OVERCURRENT DEVICE: 400A

SURFACE MOUNT  
GROUND BAR  
ISOLATED GROUND BAR

CK	LOAD SERVED	WIRE	BRKR	PL	PHASE A	PHASE B	PHASE C	PL	BRKR	WIRE	LOAD SERVED	CK	
1	spare (11)	-- 20 1	0.00	4.20				2	50	6	WELDED (9)	2	
3	tire balancer area recept (10)	-- 20 1		1.00	4.20						208V/1PH	4	
5	lo y recept (10)	-- 20 1					1.08	1.20	2	50	6	WELDED (9)	6
7	TIRE BALANCER (9)	10 30 3	1.60	4.20					2	20	4	208V/1PH	8
9	208V/3PH				1.60	1.60	1.60		2	20	4	sp #1 tire al area (10)	10
11	--												12
13	ac/split unit (10)	-- 30 2	1.86	1.50							sp htr #2 tire al area (10)	14	
15	--		1.86	1.50									16
17	insta-hot athrow	-- 20 2		1.66	1.50						sp htr #1 tire al area (10)	18	
19	--		1.66	1.50									20
21	e ist (12)	-- 20 1		1.20	1.20				1	20	--	e ist (12)	22
23	e ist (12)	-- 20 1		1.20	1.20				1	20	--	e ist (12)	24
25	su panel for lfg cont (10)	-- 30 3	8.64	5.54					3	60	--	air compressor (10)	26
27	--			5.54									28
29	--			5.54									30
31	sw ay wall recept (40)	-- 20 1	1.08	1.20					1	20	12	BUILDING SIGNS (2,8,9)	32
33	ne ay wall recept (40)	-- 20 1	1.08	1.20					1	20	12	spare (11)	34
35	center column recept (10)	-- 20 1		1.08	1.08				1	20	--	tire storage recept (10)	36
37	evac chime	-- 20 1	1.92	0.52					1	20	--	north ay lights (10)	38
39	400 packs (10)	-- 20 1		0.43	5.51				3	100	--	PANEL LT (N,14)	40
41	storage east light	-- 20 1				1.36	6.63						42
43	SPEEDCO SIGN (2,8,9)	12 20 1	1.20	4.21					1	20	--		44
45	fire alarm (10)	-- 20 1		1.20	0.36				1	20	--	fire alarm (10)	46
47	office - gang recept (10)	1 20 1	1.08	1.08					1	20	--	office - gang recept (10)	48
49	lo y/tire al/sm ay lights (10)	1 20 1		0.40	0.00				1	20	--	spare (11)	50
51	air dryer (10)	-- 20 1	0.52	1.08					1	20	--	spare (11)	52
53	air dryer (10)	-- 20 1	0.52	1.08					1	20	--	air dryer (10)	54
55	center ay lights (10)	-- 20 1		1.08	0.70				1	20	--	spare (11)	56
57	center ay lights (10)	-- 20 1		1.08	0.70				1	20	--	office recept	58
59	fire storage recept (10)	-- 20 1		1.08	0.40				1	20	--	e haust fan compr m (10)	60
TOTAL CONNECTED					44.7	38.8	42.4		KVA				
TOTAL CONNECTED					372.8	323.5	353.6		AMPS				
TOTAL LOAD					126.0	104.7	113.6		KVA				
TOTAL LOAD					127.9	105.7	114.5		AMPS				

PER NEC ARTICLE 220 FEEDER LOAD

### STANDARD ELECTRICAL PANEL MOUNTING DETAIL



### GROUNDING ELECTRODE SYSTEM

### PIT LIGHT MOUNTING DETAIL

### PARTIAL ONE-LINE DIAGRAM

**HARRISON FRENCH & ASSOCIATES, L.P.**  
1705 S. Walton Blvd., Suite 3  
Bentonville, Arkansas 72712  
t 479.273.7780  
f 888.520.9685  
www.hfa-ac.com

STIPULATION FOR REUSE  
THIS DRAWING IS THE PROPERTY OF HARRISON FRENCH & ASSOCIATES, L.P. IT IS TO BE USED ONLY FOR THE PROJECT AND SITE SPECIFICALLY IDENTIFIED HEREON. IT IS NOT TO BE REPRODUCED, COPIED, OR TRANSMITTED IN ANY FORM OR BY ANY MEANS, ELECTRONIC OR MECHANICAL, WITHOUT THE WRITTEN PERMISSION OF HARRISON FRENCH & ASSOCIATES, L.P.

200 S KINGS HWY  
FORT PIERCE, FL 34945  
SPEEDCO REBRANDING &  
LIGHT MECHANICAL ADDITION  
PROJECT NUMBER: 03-19-0467

**Loves**  
Travel Stop &  
Country Stores

FLORIDA PROFESSIONAL ENGINEER  
No. 81168  
STATE OF FLORIDA  
Nathan Clemens, P.E.  
License #81168  
Harrison, French &  
Associates, L.P.  
C-04 920921

ISSUE BLOCK	DATE	DESCRIPTION
4	05/22/20	ADD #4

STORE NO. 467  
DOCUMENT DATE 05/14/19  
CHECKED BY: NKC  
DRAWN BY: GAR  
PROTO CYCLE

SCHEDULES & NOTES  
SHEET: YE2