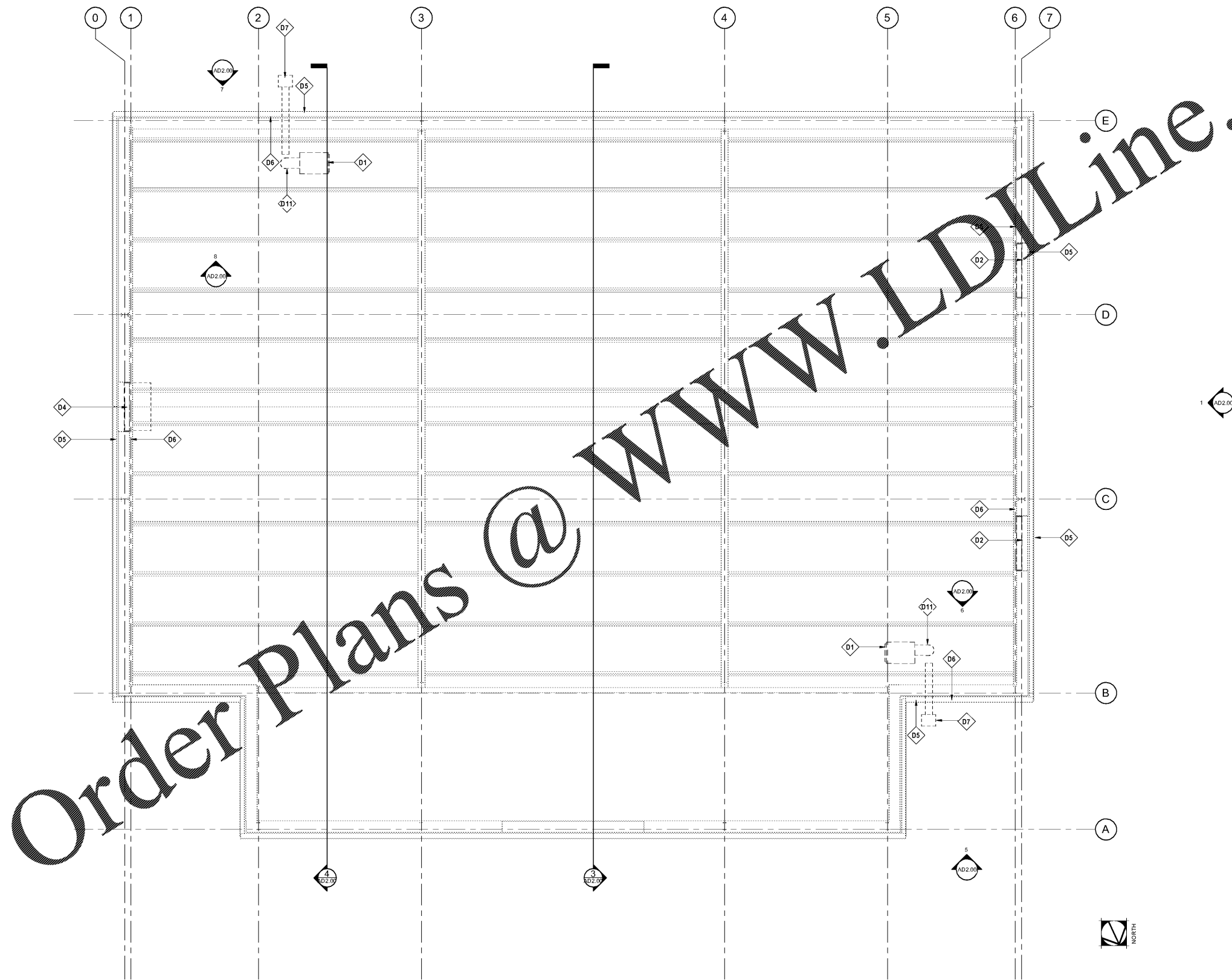


1/24/2020 3:55:52 PM

REFLECTED CEILING PLAN FOR
DEMOLITION
1/4" = 1'-0"



Keynote Legend	
Key Value	Keynote Text
D1	REMOVE EXISTING GAS-FIRED UNIT HEATERS. SEE MECHANICAL DRAWINGS.
D2	REMOVE EXISTING INTAKE LOUVER SYSTEM TO EXTENT INDICATED. SEE MECHANICAL DRAWINGS.
D4	REMOVE EXISTING WALL-MOUNTED EXHAUST FAN SYSTEM TO EXTENT INDICATED. SEE MECHANICAL DRAWINGS.
D5	REMOVE FULL METAL WALL PANEL(S) IN THIS AREA, AS REQUIRED, FOR INSTALLATION OF NEW EXTERIOR METAL WALL PANEL(S).
D6	REMOVE FULL LINER WALL PANEL(S) IN THIS AREA, AS REQUIRED, FOR INSTALLATION OF NEW METAL LINER PANEL(S).
D7	REMOVE GAS HEATER VENT PIPING THROUGH WALL. FIELD VERIFY LOCATION. SEE PLUMBING DRAWINGS.
D11	REMOVE HEATER ROOF VENT.

**WOODWARD ELEMENTARY SCHOOL
GYM HVAC DESIGN**
3034 Curtis Drive,
Atlanta, Georgia 30319

**STANLEY
LOVE
STANLEY
P A C**
ARCHITECTURE
INTERIORS PLANNING
PROGRAM MANAGEMENT
1086 SPRING STREET, N.W.
ATLANTA, GEORGIA 30309-2818
404-875-0208
www.stanleylove-stanley.com

DRAWING TITLE
**REFLECTED CEILING
PLAN - DEMOLITION**



CONSULTANT

SCALES AS STATED HEREON ARE VALID ON THE ORIGINAL DRAWING. THE DIMENSIONS OF WHICH ARE SPECIFIED BY THE SCALE. NOTED HEREON ARE HEREBY CHANGE BY THE PART OF THE OVERALL SHEET DIMENSIONS OF THE PRINT TO CORRESPONDING DIMENSIONS OF THE ORIGINAL DRAWING.

THIS DRAWING IS THE PROPERTY OF STANLEY LOVE STANLEY P.C. AND IS NOT TO BE REPRODUCED OR COPIED IN WHOLE OR IN PART. IT IS ON TO BE USED FOR THE PROJECT AND SITE SPECIFICALLY IDENTIFIED HEREON AND IS NOT TO BE USED ON ANY OTHER PROJECT. IT IS TO BE RETURNED UPON REQUEST.

COPYRIGHT © 2018. ALL RIGHTS RESERVED
STANLEY LOVE STANLEY P.C.
DRAWING NO.

DATE
01/06/2020
PROJECT NO.
6919.12
DRAWING NO.

AD1.00

RELEASED FOR CONSTRUCTION 01/06/2020