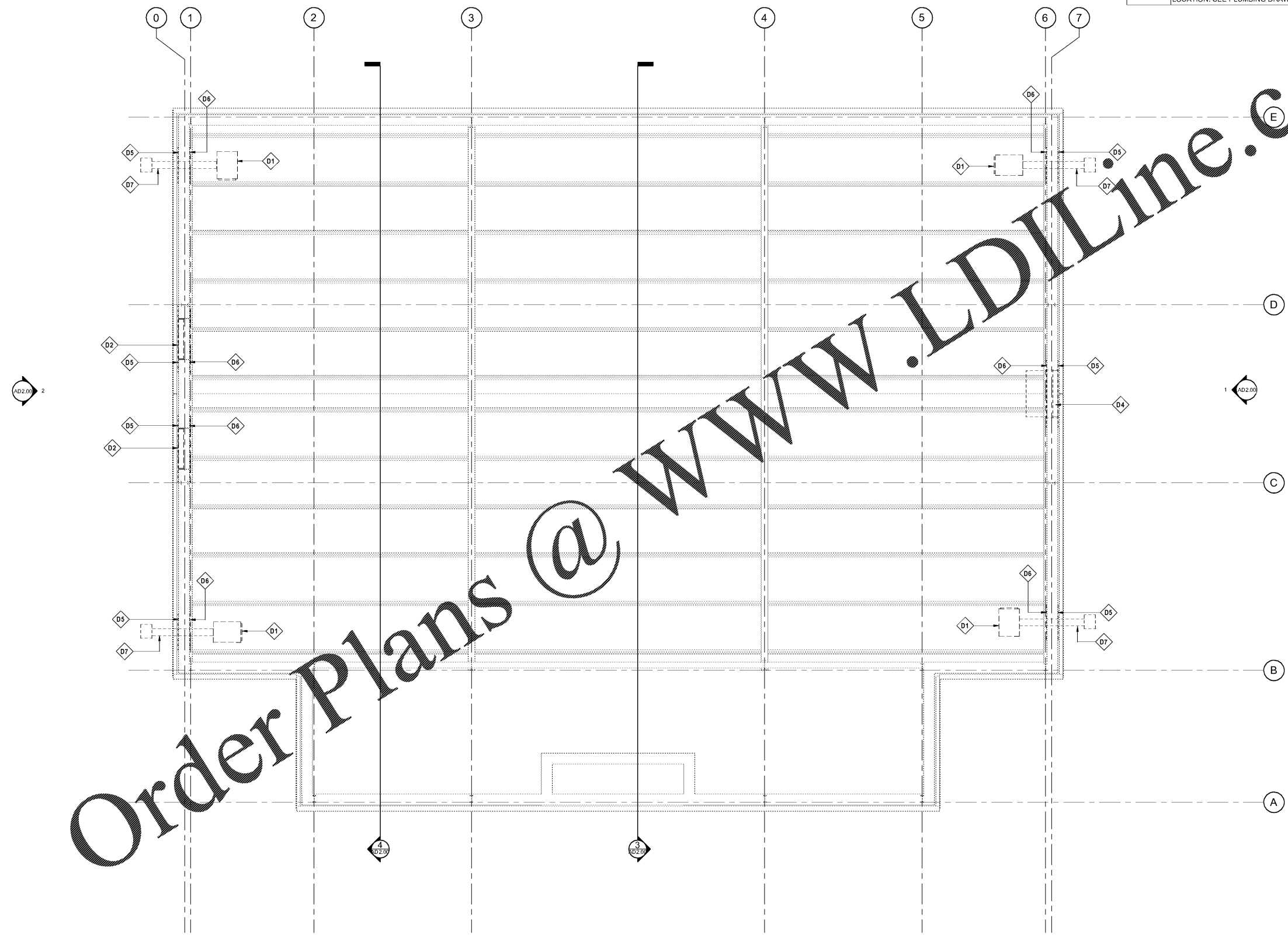


Keynote Legend	
Key Value	Keynote Text
D1	REMOVE EXISTING GAS-FIRED UNIT HEATERS. SEE MECHANICAL DRAWINGS.
D2	REMOVE EXISTING INTAKE LOUVER SYSTEM TO EXTENT INDICATED. SEE MECHANICAL DRAWINGS.
D4	REMOVE EXISTING WALL-MOUNTED EXHAUST FAN SYSTEM TO EXTENT INDICATED. SEE MECHANICAL DRAWINGS.
D5	REMOVE FULL METAL WALL PANEL(S) IN THIS AREA, AS REQUIRED, FOR INSTALLATION OF NEW EXTERIOR METAL WALL PANEL(S).
D6	REMOVE FULL LINER WALL PANEL(S) IN THIS AREA, AS REQUIRED, FOR INSTALLATION OF NEW METAL LINER PANEL(S).
D7	REMOVE GAS HEATER VENT PIPING THROUGH WALL. FIELD VERIFY LOCATION. SEE PLUMBING DRAWINGS.



Order Plans @ www.LDILine.com

REFLECTED CEILING PLAN - DEMOLITION  
1/4" = 1'-0"



**WADSWORTH MAGNET SCHOOL  
GYM HVAC DESIGN**  
3039 Santa Monica Drive  
Decatur, Georgia 30032

**STANLEY  
LOVE  
STANLEY  
P A C**  
ARCHITECTURE  
INTERIORS PLANNING  
PROGRAM MANAGEMENT  
1586 SPRING STREET, N.W.  
ATLANTA, GEORGIA 30309  
404-875-0508  
www.stanleylove.com

DRAWING TITLE  
REFLECTED CEILING  
PLAN - DEMOLITION



PROFESSIONAL SEAL  
WILLIAM J. STANLEY  
CONSULTANT

SCALES AS SHOWN HEREON ARE VALID ON THE ORIGINAL DRAWING. THE DIMENSION OF WHICH ARE SHOWN ON THE SCALE. NOTED HEREON ARE HEREBY CHANGE BY THE PART OF THE OVERALL SHEET DIMENSIONS OF THE PRINT TO CORRESPONDING DIMENSIONS OF THE ORIGINAL DRAWING.  
THE DRAWING IS THE PROPERTY OF STANLEY, LOVE & STANLEY, P.C. AND IS NOT TO BE REPRODUCED OR COPIED IN WHOLE OR IN PART. IT IS ONLY TO BE USED FOR THE PROJECT AND SITE SPECIFICALLY IDENTIFIED HEREON AND NOT TO BE USED ON ANY OTHER PROJECT. IT IS TO BE RETURNED UPON REQUEST.  
COPYRIGHT © 2018 - ALL RIGHTS RESERVED  
STANLEY, LOVE & STANLEY, P.C.  
DRAWING NO.

DATE  
01/31/2020  
PROJECT NO.  
6919.6  
DRAWING NO.

**AD1.00**