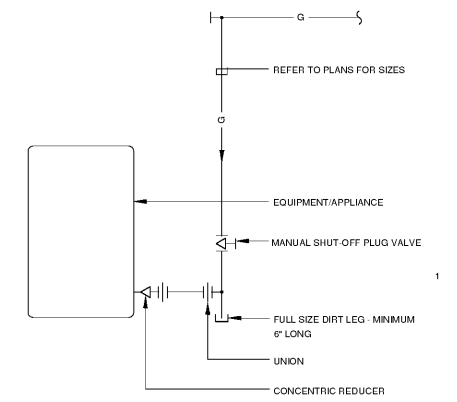
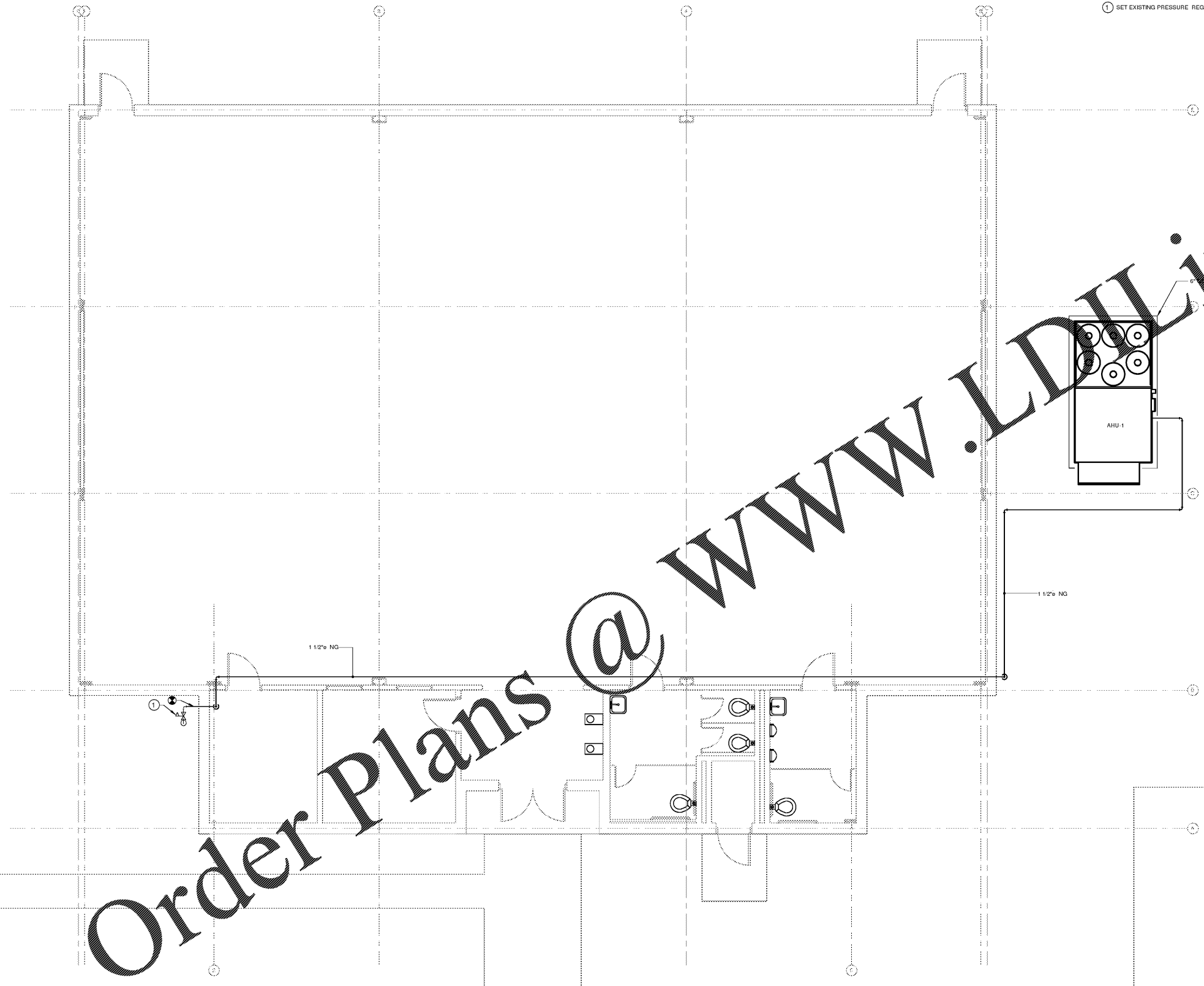


GENERAL NOTES

1. TOTAL DEVELOPED LENGTH OF NATURAL GAS PIPING IS 250 FEET. ACCOUNTING FOR FITTINGS. NATURAL GAS PIPING IS SIZED FOR PRESSURE OF 14" W.C. WITH A PRESSURE DROP OF 0.3" W.C.

DRAWING NOTES

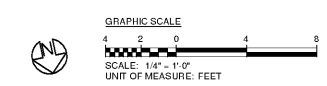
① SET EXISTING PRESSURE REGULATOR TO 14" W.C.



① **DETAIL - GAS EQUIPMENT CONNECTION**
SCALE: N.T.S.

Order Plans @

LEVEL 1 PLUMBING PLAN
SCALE: 1/4" = 1'-0"



**VANDERLYN ELEMENTARY SCHOOL
GYM HVAC DESIGN**
1877 Vanderlyn Drive
Dunwoody, Georgia 30338

**STANLEY
LOVE
STANLEY
P A C**
ARCHITECTURE
INTERIORS PLANNING
PROGRAM MANAGEMENT
1186 SPRING STREET, N.W.
ATLANTA, GEORGIA 30309-3813
404.576.0556
404.576.0817
www.stanleylove.com

DRAWING TITLE
**PLUMBING LEVEL 1
PLAN**



CONSULTANT

SCALES AS STATED HEREON ARE VALID ON THE ORIGINAL DRAWING. THE DIMENSIONS OF WHICH ARE SHOWN HEREON. THE SCALES OF THIS DRAWING ARE SUBJECT TO CHANGE BY THE RATIO OF THE OVERALL SHEET DIMENSIONS OF THE PRINT TO CORRESPONDING DIMENSIONS OF THE ORIGINAL DRAWING.
THIS DRAWING IS THE PROPERTY OF STANLEY LOVE STANLEY, P.C. AND IS NOT TO BE REPRODUCED, COPIED, OR IN ANY MANNER, WITHOUT THE WRITTEN CONSENT OF STANLEY LOVE STANLEY, P.C. ANY REPRODUCTION HEREIN AND IS NOT TO BE USED ON ANY OTHER PROJECT. IT IS TO BE RETURNED UPON REQUEST.

COPYRIGHT © 2016. ALL RIGHTS RESERVED BY STANLEY LOVE STANLEY, P.C.
DRAWING NO.

DATE
01/06/2020
PROJECT NO.
6919.8
DRAWING NO.

P-101

RELEASED FOR CONSTRUCTION 01/06/2020