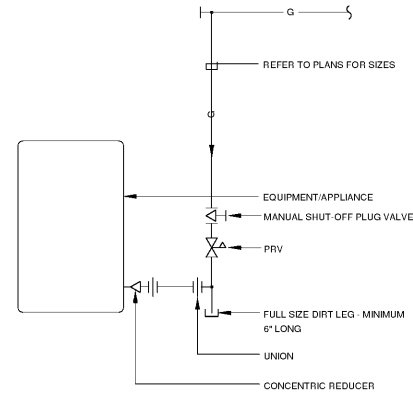


GENERAL NOTES

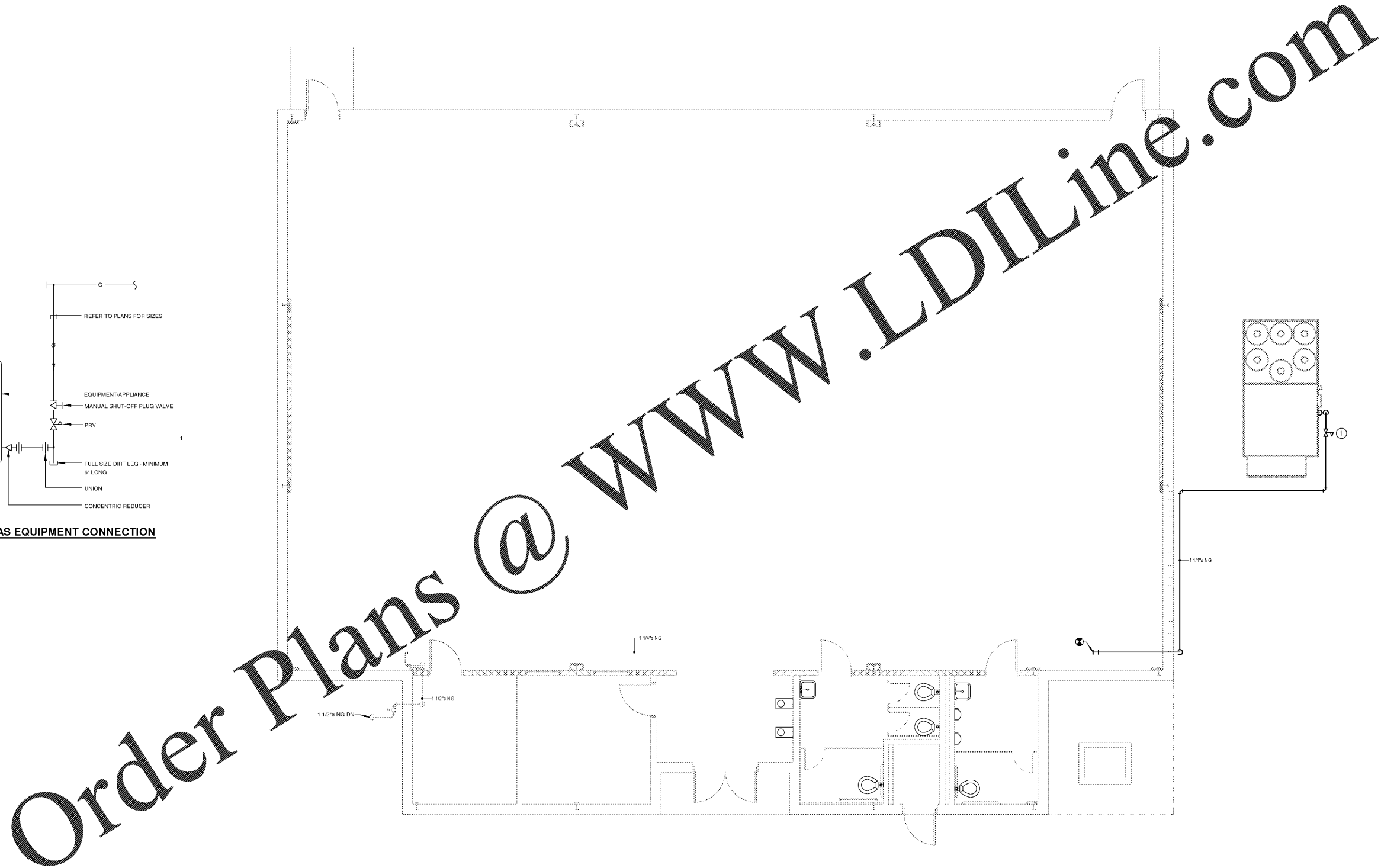
1. TOTAL DEVELOPED LENGTH OF NATURAL GAS PIPING IS 250 FEET. ACCOUNTING FOR FITTINGS. NATURAL GAS PIPING IS SIZED FOR PRESSURE OF 14" W.C. WITH A PRESSURE DROP OF 0.3" W.C.

DRAWING NOTES

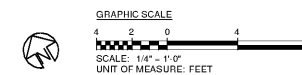
① SET PRESSURE REGULATOR TO 14" W.C.



② **DETAIL - GAS EQUIPMENT CONNECTION**
SCALE: N.T.S.



① **LEVEL 1 PLUMBING PLAN**
SCALE: 1/4" = 1'-0"



SHADOW ROCK ELEMENTARY SCHOOL
GYM HVAC DESIGN
1040 Kingway Drive
Lithonia, Georgia 30058



ARCHITECTURE
INTERIORS PLANNING
PROGRAM MANAGEMENT
1186 SPRING STREET, N.W.
ATLANTA, GEORGIA 30309-3819
404.876.0596
404.876.0847 fax
www.stanleylove-stanley.com

DRAWING TITLE
PLUMBING LEVEL 1 PLAN



CONSULTANT
mf Engineering
888 HARRISON DRIVE SUITE 725
ATLANTA, GA 30328 478.913.0228

SCALES AS STATED HEREON ARE VALID ON THE ORIGINAL DRAWING. THE DIMENSIONS OF WHICH ARE SHOWN HEREON. THE SCALES OF THE DRAWING ARE SUBJECT TO CHANGE BY THE RATIO OF THE OVERALL SHEET DIMENSIONS OF THE PRINT TO CORRESPONDING DIMENSIONS OF THE ORIGINAL DRAWING.

THIS DRAWING IS THE PROPERTY OF STANLEY LOVE-STANLEY, P.C. AND IS NOT TO BE REPRODUCED BY COPIES, PHOTOCOPIES, OR BY ANY MEANS, WITHOUT THE WRITTEN PERMISSION OF STANLEY LOVE-STANLEY, P.C. ANY REUSE OF THIS DRAWING WITHOUT THE WRITTEN PERMISSION OF STANLEY LOVE-STANLEY, P.C. IS STRICTLY PROHIBITED AND IS NOT TO BE USED ON ANY OTHER PROJECT. IT IS TO BE RETURNED UPON REQUEST.

COPYRIGHT © 2016. ALL RIGHTS RESERVED BY STANLEY LOVE-STANLEY, P.C.

DRAWING NO.
DATE
01/31/2020
PROJECT NO.
6919.5
DRAWING NO.

P-101

RELEASED FOR CONSTRUCTION 01/31/2020