

24-HOUR EMERGENCY CONTACT
WAYNE CHANNER
DCSD SLOST V CIP PROGRAM
SENIOR PROJECT MANAGER
CELL: (404) 924-5628

PROJECT CONTACTS

OWNER/DEVELOPER:
 GHAUL COUNTY BOARD OF EDUCATION
 1702 MOUNTAIN INDUSTRIAL BLDG
 STONE MOUNTAIN, GA 30080
 CONTACT: WAYNE CHANNER
 PHONE: (404) 924-9828

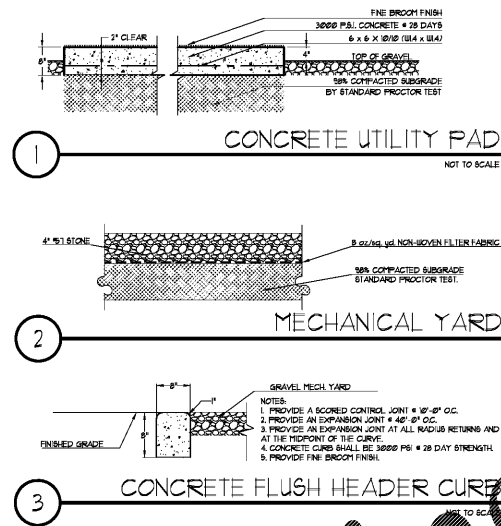
ARCHITECT:
 STANLEY LOVE STANLEY
 1086 SPRING ST. N.W.
 ATLANTA, GA 30309
 CONTACT: CHRIS BRANN
 PHONE: (770) 485-5173

SITE DESIGN PROFESSIONAL:
 BREEDONS AND PLANNING, INC.
 15 SIMPSON ST.
 ATLANTA, GA 30308
 CONTACT: CHRIS BRANN
 PHONE: (770) 485-5173

BASE DATA TAKEN FROM:
 OLD SITE PLANS
 AERIAL PHOTO
 FIELD OBSERVATIONS

BLP ID#: 20004

BASE DATA NOTES
 BASE DATA OBTAINED FROM G.S. DATA, OR FROM SITE FIELD SURVEY, PLACERT, AND VISUAL INTERVIEW. CONTRACTOR SHALL VERIFY THE LOCATION OF ALL EXISTING UTILITIES PRIOR TO SUBMITTING A BID. ANY DISCREPANCIES NOTICED DURING CONSTRUCTION SHALL BE BROUGHT TO THE OWNER'S ATTENTION IMMEDIATELY.



12" GAS LINE

ONE STORY
 MULTI-PURPOSE BUILDING
 F.F.E. 944,501

GRAVEL
 MECHANICAL
 YARD

CONCRETE
 UTILITY PAD

CONTROL JOINT

EXACT LOCATION OF CONCRETE
 PAD SHALL BE COORDINATED WITH
 MECHANICAL EQUIPMENT.
 MECHANICAL EQUIPMENT MUST
 MAINTAIN, AT A MINIMUM, THE
 CLEARANCES SHOWN ON THE M/E/P
 DRAWINGS

4" WIDE ACCESS GATE
 WITH LATCH AND
 1/2" TALL BLACK NYLON
 COATED CHAIN LINK FENCE
 CENTERED IN HEADER CURB

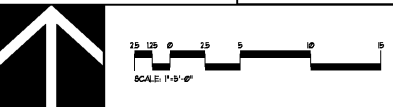
BASEBALL
 BACK STOP

LAYOUT PLAN NOTES

- PROPOSED USE: ELEMENTARY SCHOOL.
- CONTRACTOR SHALL VERIFY CONDITIONS AND DIMENSIONS BEFORE PROCEEDING WITH CONSTRUCTION. ANY DISCREPANCIES FOUND SHALL BE REPORTED TO THE ARCHITECT FOR CLARIFICATION AND/OR CORRECTION BEFORE PROCEEDING WITH THE WORK. CONTRACTOR SHALL ASSUME RESPONSIBILITY FOR DISCREPANCIES WHICH ARE NOT REPORTED.
- ALL DIMENSIONS ARE TO THE FACE OF CURBS AND FACE OF WALLS.
- ALL ANGLES ARE 90° UNLESS OTHERWISE NOTED.

DO NOT BREAK OR DUPLICATE

- DO NOT DUPLICATE DRAWINGS WITHOUT PERMISSION.
- READ THE SPECIFICATIONS, THIS SET OF DRAWINGS AND SPECIFICATIONS, DEFINE PROJECT SCOPE AND CONTRACT REQUIREMENTS. INDIVIDUAL SHEETS SEPARATED FROM THE SET MAY NOT ADEQUATELY REFLECT ALL INFORMATION NEEDED TO COMPLETE CERTAIN ITEMS. DO NOT REPAIRS THIS SET OF DRAWINGS INTO INDIVIDUAL SHEETS.



DO NOT DUPLICATE DRAWINGS WITHOUT WRITTEN PERMISSION

CAUTION

THE UTILITIES SHOWN ARE SHOWN FOR THE CONTRACTOR'S CONVENIENCE ONLY. THERE MAY BE OTHER UTILITIES NOT SHOWN ON THESE PLANS. THE DESIGN PROFESSIONAL ASSUMES NO RESPONSIBILITY FOR THE LOCATIONS SHOWN AND IT SHALL BE THE CONTRACTOR'S RESPONSIBILITY TO VERIFY THE LOCATIONS OF UTILITIES WITHIN THE LIMITS OF THE WORK. DAMAGE TO EXISTING UTILITIES BY THE CONTRACTOR FROM HIS/HER OPERATIONS SHALL BE THE SOLE RESPONSIBILITY OF THE CONTRACTOR.

CONTRACTOR SHALL BE RESPONSIBLE TO SECURE THE SERVICES OF A PRIVATE UTILITY LOCATOR PRIOR DURING THE ENTIRE COURSE OF CONSTRUCTION. CONTRACTOR SHALL PAY FOR SAID SERVICES. CONTRACTOR SHALL IMMEDIATELY REPAIR ALL UTILITIES DAMAGED BY CONSTRUCTION ACTIVITIES AT NO ADDITIONAL COST TO THE OWNER.

Know what's below.
 Call before you dig.
 Dial 811
 Or Call 800-282-7411

CONTRACTOR SHALL BE RESPONSIBLE FOR COMPACTING OF BACKFILL OF ALL UTILITY TRENCHES WITHIN SITE WORK LIMITS. THIS INCLUDES TRENCHES DUG AND BACKFILLED BY LOCAL UTILITIES, SUCH AS POWER, GAS, TELEPHONE, ETC. CONTRACTOR SHALL PROVIDE ADDITIONAL BACKFILL AND COMPACTOR AS NECESSARY IF SETTLEMENT OCCURS.

Order Plans @

WWW.LDILine.com

SHADOW ROCK ELEMENTARY SCHOOL
GYM HVAC DESIGN
 1040 Kingway Drive
 Lithonia, Georgia 30058



ARCHITECTURE
 INTERIORS PLANNING
 PROGRAM MANAGEMENT

1086 SPRING STREET, N.W.
 ATLANTA, GEORGIA 30309
 404-878-2000
 404-878-8919 fax
 www.stanleylove.com

DRAWING TITLE
LAYOUT & PAVING PLAN
 AND DETAILS



CONSULTANT

NOTES: AS SHOWN HEREON ARE VALID ON THE ORIGINAL DRAWING. THE DIMENSIONS OF THIS DRAWING SHALL BE THE DIMENSIONS OF THE ORIGINAL DRAWING.
 THE DRAWING IS THE PROPERTY OF STANLEY LOVE STANLEY, INC. AND IS NOT TO BE REPRODUCED OR COPIED IN WHOLE OR IN PART, IF SUCH IS DONE WITHOUT THE WRITTEN PERMISSION OF STANLEY LOVE STANLEY, INC. IT IS TO BE RETURNED UPON REQUEST.
 COPYRIGHT © 2018. ALL RIGHTS RESERVED
 STANLEY LOVE STANLEY, INC.

DRAWING NO.
 DATE
 01/31/2020
 PROJECT NO.
 6919.5
 DRAWING NO.
C200

RELEASED FOR CONSTRUCTION 01/31/2020