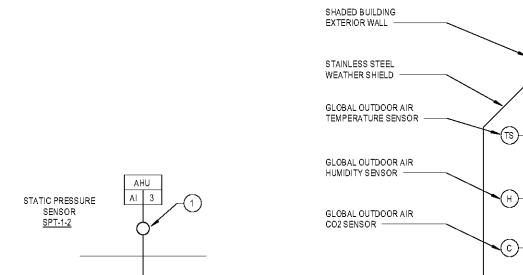


INPUT/OUTPUT SUMMARY

Table with columns: POINT NO., SYSTEM APPARATUS OR AREA POINT DESCRIPTION, ANALOG (MEASURED, CALC), BINARY, OUTPUTS (BINARY, ANALOG), SYSTEM FEATURES (ALARMS, PROGRAMS), GEN. Includes rows for SUPPLY AIR, COOLING COIL, GAS HEATING COIL, SUPPLY FAN, DAMPER, OUTSIDE AIR, DAMPER, HOT GAS REHEAT COIL, RETURN AIR, and REMOTE SENSORS.

DRAWING NOTES:

- 1. STATIC PRESSURE SENSOR SHALL BE LOCATED IN THE SUPPLY DUCTWORK AT THE POINTS OF MINIMUM STATIC PRESSURE (TYPICALLY 20' DOWNSTREAM) AND THE INITIAL BALANCED SET POINT DETERMINED THROUGH TEST AND BALANCE.
2. SMOKE DETECTOR SHALL BE FURNISHED AND WIRED UNDER DIVISION 26 AND INSTALLED BY DIVISION 23.

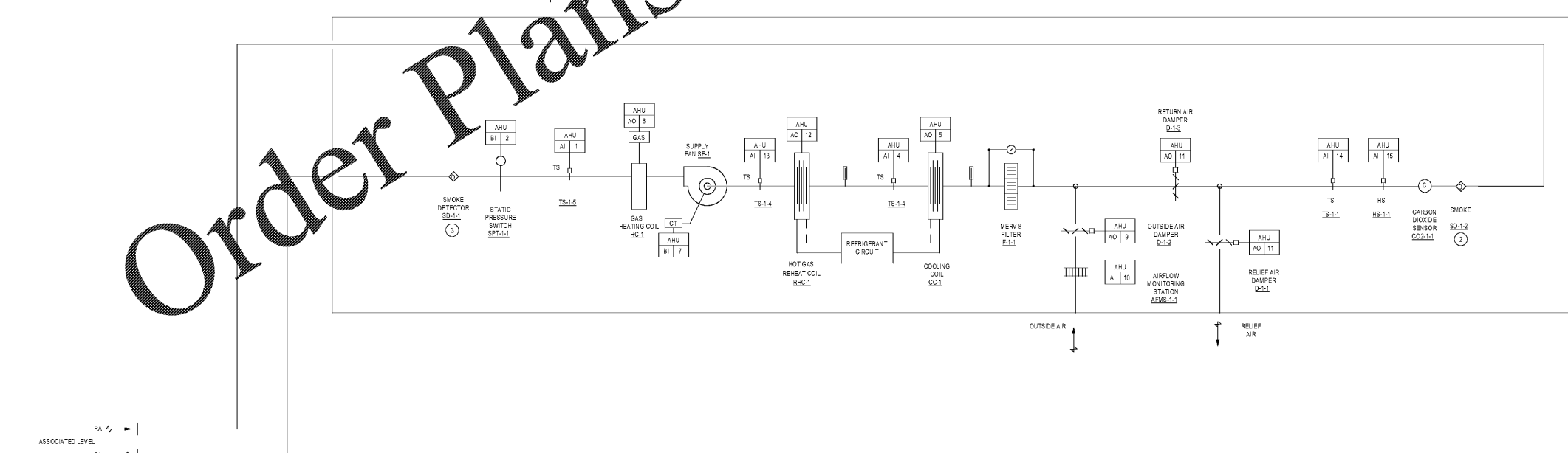


Order Plans @ WWW.BIDLine.com

SEQUENCE OF CONTROLS
PART 1 - TEMPERATURE CONTROL SEQUENCES
A. SEE SCHEMATICS FOR LOCATIONS OF ALL TEMPERATURE TRANSMITTERS, PANELS, DAMPERS, VALVES, AND EQUIPMENT...
PART 2 - MASTER HEATING AND COOLING CONTROL
A. THE BAS SHALL COMMAND THE AIR HANDLING UNIT ON BASED ON THE OCCUPIED/UNOCCUPIED SCHEDULE...
PART 3 - AIR HANDLING UNIT CONTROL
A. SYSTEM CONTROL
a. SUPPLY FAN SHALL BE MANUALLY INDEXED TO THE AUTOMATIC MODE AT THE BYPASS.

B. HEATING MODE CONTROL
a. OCCUPIED MODE: SUPPLY FAN SHALL BE RUNNING, OUTDOOR DAMPER D-1-2 SHALL BE SET TO THE MINIMUM POSITION...
c. COOLING MODE CONTROL
a. OCCUPIED MODE: SUPPLY FAN SET-1 SHALL BE RUNNING, OUTDOOR DAMPER D-1-2 SHALL BE OPEN TO ITS MINIMUM POSITION.

G. SMOKE CONTROL
a. THE AHU AND ASSOCIATED AIR DISTRIBUTION SYSTEM SHALL BE EQUIPPED WITH SMOKE DETECTORS AND CONNECTED TO THE BUILDING FIRE ALARM SYSTEM...
H. ALARMS
a. FAN FAILURE: A FAILURE OF THE SUPPLY FAN, AS SENSED BY THE CURRENT TRANSDUCER, SHALL BE ALARMED TO THE BAS...



AHU CONTROLS DIAGRAM
SCALE: N.T.S.

Table with columns: CD SET, 01/06/2020

KITTRIDGE MAGNET SCHOOL
GYM HVAC DESIGN
1633 E. Nancy Creek Drive
Atlanta, Georgia 30319

STANLEY LOVE STANLEY P A C
ARCHITECTURE
INTERIORS PLANNING
PROGRAM MANAGEMENT

MECHANICAL CONTROLS



CONSULTANT
SCALES AS STATED HEREON ARE VALID ON THE ORIGINAL DRAWING...
DATE: 01/06/2020
PROJECT NO: 6919.4
DRAWING NO: M-301