

INPUT/OUTPUT SUMMARY

Table with columns for POINT NO., SYSTEM APPARATUS OR AREA POINT DESCRIPTION, and various input/output categories (MEASURED, ANALOG, BINARY, etc.).

DRAWING NOTES

- 1. STATIC PRESSURE SENSOR SHALL BE LOCATED IN THE SUPPLY DUCTWORK AT THE POINT(S) OF MINIMUM STATIC PRESSURE...
2. SMOKE DETECTOR SHALL BE FURNISHED AND WIRED UNDER DIVISION 26 AND INSTALLED BY DIVISION 23.

SEQUENCE OF CONTROL

PART 1 - TEMPERATURE CONTROL SEQUENCES

- A. SEE SCHEMATICS FOR LOCATIONS OF ALL TEMPERATURE TRANSMITTERS, PANELS, DAMPERS, VALVES, AND EQUIPMENT...
B. A FULL COMMUNICATIONS INTERFACE AND COMPLETE INTEROPERABILITY WITH THE BAS SHALL BE PROVIDED TO PERFORM THE FUNCTIONS HEREIN DESCRIBED OR INDICATED IN THE CONTRACT DOCUMENTS.

PART 2 - MASTER HEATING AND COOLING CONTROL

- A. THE BAS SHALL COMMAND THE AIR HANDLING UNIT ON BASED ON THE OCCUPIED/UNOCCUPIED SCHEDULE...
B. BAS SHALL NORMALLY CONTROL THE SYSTEM HEATING AND COOLING MODES AS SELECTED IN ACCORDANCE WITH OUTDOOR AIR TEMPERATURE THROUGH THE BUILDING GLOBAL OUTDOOR AIR SENSOR...

PART 3 - AIR HANDLING UNIT CONTROL

- A. SYSTEM CONTROL
1. SUPPLY FAN SHALL BE MANUALLY INDEXED TO THE AUTOMATIC MODE AT THE BYPASS.
2. THE AIR HANDLING UNIT SHALL BE ENERGIZED VIA REMOTE SIGNAL FROM THE BAS...

B. HEATING MODE CONTROL

- 1. OCCUPIED MODE: SUPPLY FAN SHALL BE RUNNING, OUTDOOR DAMPER D-2 SHALL BE SET TO THE MINIMUM POSITION...
2. UNOCCUPIED MODE: THE BAS SHALL DETERMINE THE UNOCCUPIED MODE BASED ON A 365 DAY/24 HR GRAPHIC INTERFACE SCHEDULE PROGRAM...

D. OUTDOOR AIR DAMPER AND CO2 LEVEL CONTROL

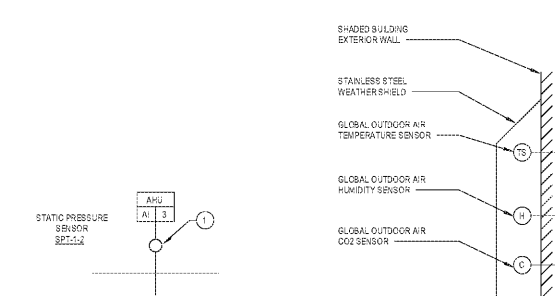
- 1. THE OUTDOOR AIR DAMPER SHALL BE CLOSED DURING WARM-UP AND UNOCCUPIED MODES.
2. DURING OCCUPIED MODE, OUTDOOR AIR DAMPER SHALL INITIALLY CLOSE TO ITS MINIMUM POSITION TO MAINTAIN THE MINIMUM OUTDOOR AIR QUANTITY...
3. THE OUTDOOR AIR DAMPER SHALL MODULATE OPEN TO MAINTAIN THE MAXIMUM OUTDOOR AIR POSITION QUANTITY...

G. SMOKE CONTROL

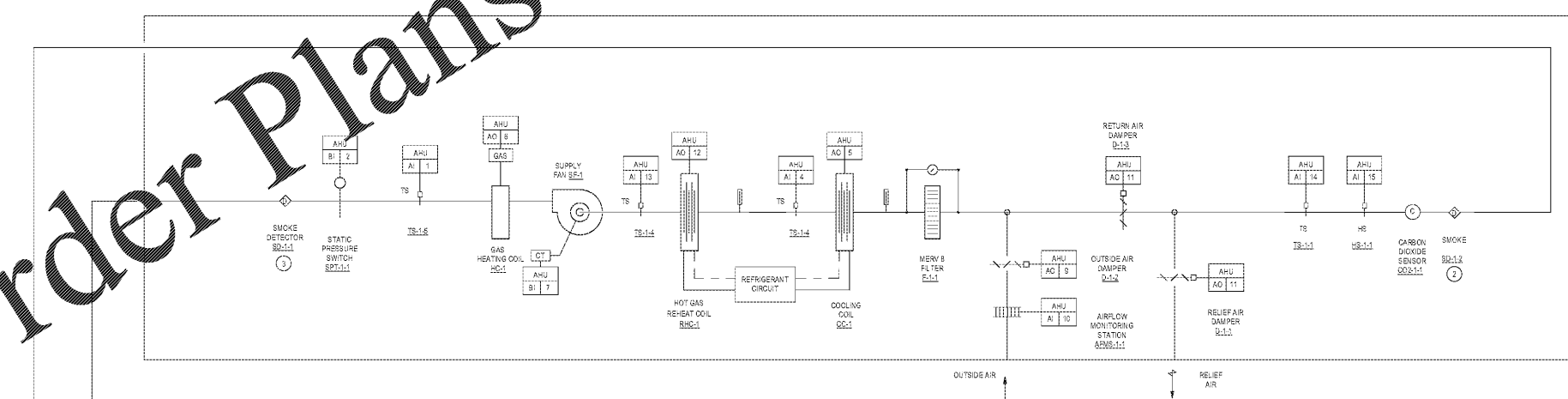
- 1. THE AHU AND ASSOCIATED AIR DISTRIBUTION SYSTEM SHALL BE EQUIPPED WITH SMOKE DETECTORS AND CONNECTED TO THE BUILDING FIRE ALARM SYSTEM...
2. ANY AHU OR ASSOCIATED AIR DISTRIBUTION (HVAC) SMOKE DETECTOR SHALL, UPON ACTIVATION, SHUT DOWN ALL OPERATIONAL CAPABILITIES OF THE AIR DISTRIBUTION SYSTEM...

I. FAILURE MODES

- 1. OUTSIDE AIR AND RELIEF AIR DAMPERS SHALL BE CLOSED, RETURN AIR DAMPERS SHALL OPEN.
2. WHEN THE OUTDOOR AIR DAMPER TEMPERATURE IS LESS THAN 28 DEGREES F AND THE ENTHALPY IS LESS THAN 28 BTULBS OF DRY AIR, THE BAS SHALL MODULATE THE OUTDOOR AIR, RETURN AIR, AND RETURN AIR DAMPER IN SEQUENCE TO MAINTAIN THE AHU LEAVING AIR TEMPERATURE SETPOINT OF 55 DEGREE F.



AHU CONTROLS DIAGRAM SCALE: N.T.S.



JOLLY ES GYM HVAC DESIGN 1070 Otello Ave, Clarkston, Ga 30021

STANLEY LOVE STANLEY P E C ARCHITECTURE INTERIORS PLANNING PROGRAM MANAGEMENT

MECHANICAL CONTROLS

PROFESSIONAL SEAL GEORGIA REGISTERED PROFESSIONAL ENGINEER DANIEL HOTO

mf Engineering 302 HARMON ROAD ATLANTA, GA 30303 SUITE 720 678.932.0200

SCALE AS SHOWN HEREIN ARE VALID ON THE ORIGINAL DRAWING... THE DRAWING IS THE PROPERTY OF STANLEY LOVE STANLEY P E C...

M-301 DATE: 12/09/19 PROJECT NO: 6919.3 DRAWING NO:

RELEASED FOR CONSTRUCTION