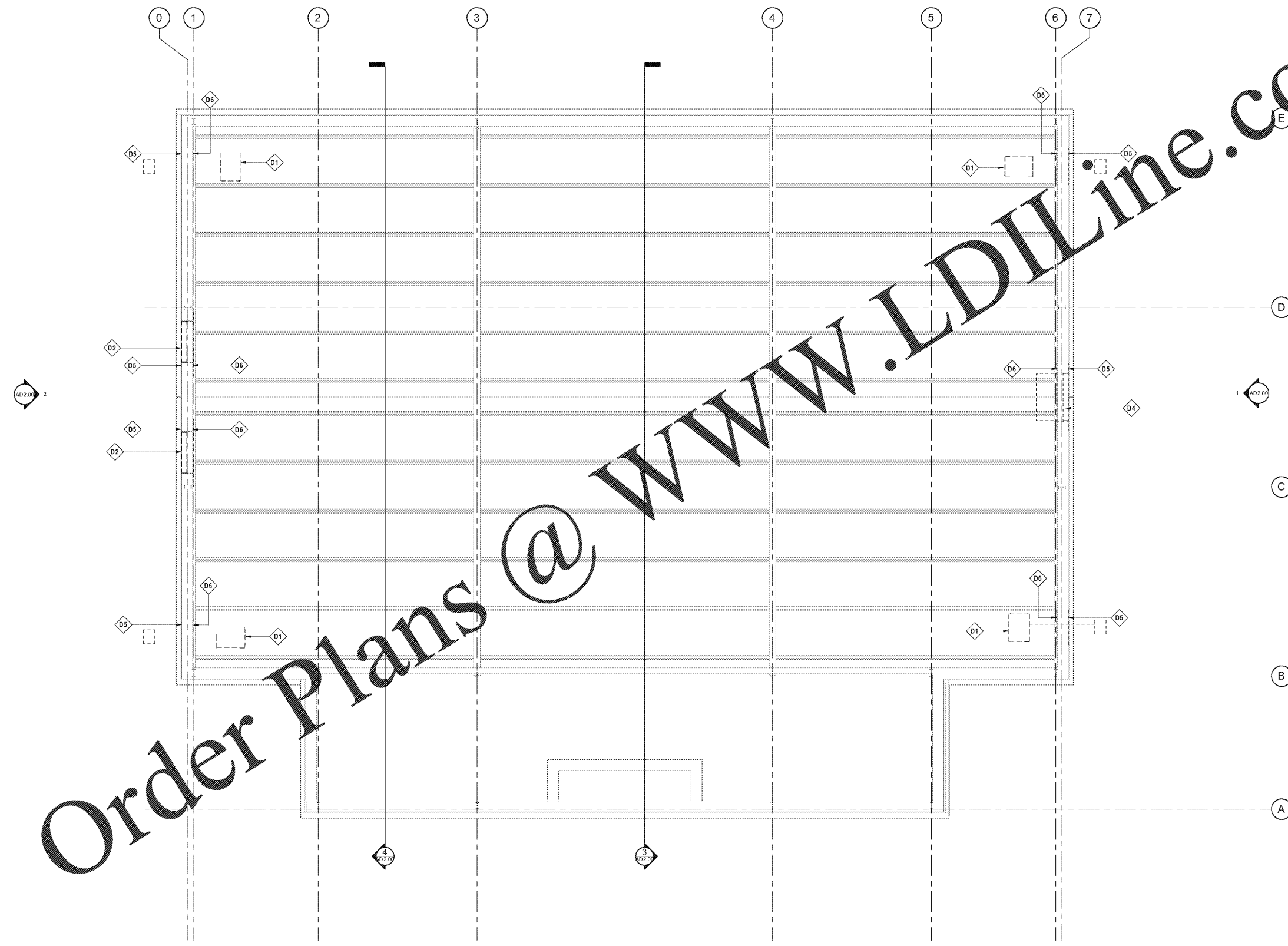


100% CD SET	12/09/2019

Keynote Legend	
Key Value	Keynote Text
D1	REMOVE EXISTING GAS-FIRED UNIT HEATERS. SEE MECHANICAL DRAWINGS.
D2	REMOVE EXISTING INTAKE LOUVER SYSTEM TO EXTENT INDICATED. SEE MECHANICAL DRAWINGS.
D4	REMOVE EXISTING WALL-MOUNTED EXHAUST FAN SYSTEM TO EXTENT INDICATED. SEE MECHANICAL DRAWINGS.
D5	REMOVE FULL METAL WALL PANEL(S) IN THIS AREA, AS REQUIRED, FOR INSTALLATION OF NEW HVAC DUCT. SEE MECHANICAL.
D6	REMOVE FULL LINER WALL PANEL(S) IN THIS AREA, AS REQUIRED, FOR INSTALLATION OF NEW HVAC DUCT. SEE MECHANICAL.



Order Plans @ www.LDILine.com

REFLECTED CEILING PLAN -
 1 DEMOLITION
 1/4" = 1'-0"



JOLLY ES GYM HVAC DESIGN
 1070 Otello Ave, Clarkston, GA 30021

**STANLEY
 LOVE
 STANLEY
 P A C**

ARCHITECTURE
 INTERIORS PLANNING
 PROGRAM MANAGEMENT

1706 SPRING STREET, N.W.
 ATLANTA, GEORGIA 30329-2918
 404-525-0248
 404-525-0817 fax
 www.stanleylove-stanleypac.com

REFLECTED CEILING
 PLAN - DEMOLITION

PROFESSIONAL SEAL

WILLIAM J. STANLEY
 ARCHITECT

SCALES AS SHOWN HEREON ARE VALID ON THE ORIGINAL DRAWING. THE DIMENSIONS OF WHICH ARE NOT IN CONFORMANCE WITH THE SCALE NOTED HEREON ARE HEREBY CHANGE BY THE HAND OF THE OVERALL SHEET COORDINATOR OF THE PRINT TO CORRESPONDING DIMENSIONS OF THE ORIGINAL DRAWING.

THIS DRAWING IS THE PROPERTY OF STANLEY LOVE STANLEY P A C AND IS NOT TO BE REPRODUCED OR COPIED IN WHOLE OR IN PART. IT IS ONLY TO BE USED FOR THE PROJECT AND SITE SPECIFICALLY IDENTIFIED HEREON AND IS NOT TO BE USED ON ANY OTHER PROJECT. IT IS TO BE RETURNED UPON REQUEST.

12/09/2019

DATE
 12/09/2019

PROJECT NO.
 6919.3

DRAWING NO.
 AD1.00

RELEASED FOR CONSTRUCTION 12/09/2019