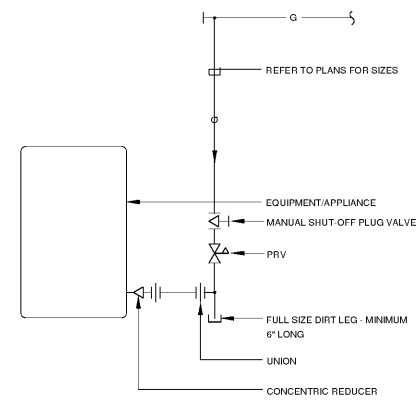


GENERAL NOTES

1. TOTAL DEVELOPED LENGTH OF NATURAL GAS PIPING IS 250 FEET. ACCOUNTING FOR FITTINGS. NATURAL GAS PIPING IS SIZED FOR PRESSURE OF 14" W.C. WITH A PRESSURE DROP OF 0.3" W.C.

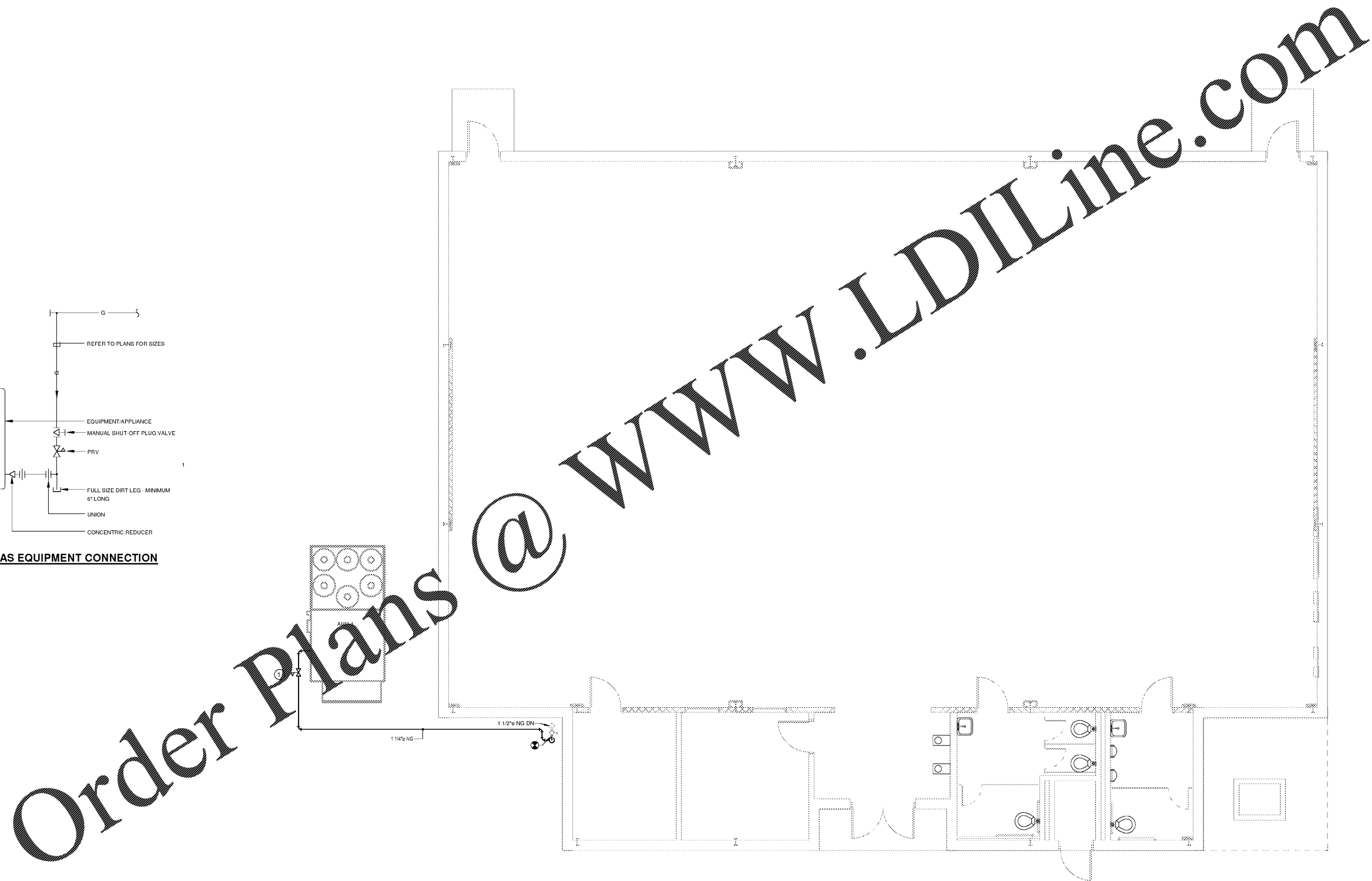
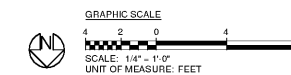
DRAWING NOTES

① SET PRESSURE REGULATOR TO 14" W.C.



② **DETAIL - GAS EQUIPMENT CONNECTION**
SCALE: N.T.S.

① **LEVEL 1 PLUMBING PLAN**
SCALE: 1/4" = 1'-0"



HAWTHORNE ELEMENTARY SCHOOL
GYM HVAC DESIGN
2535 Caladium Drive NE
Atlanta, GA 30345

STANLEY LOVE STANLEY P R C

ARCHITECTURE
INTERIORS PLANNING
PROGRAM MANAGEMENT

1186 SPRING STREET, N.W.
ATLANTA, GEORGIA 30309-3913
404.576.0596
404.576.0887 fax
www.stanleylove-stanleyprc.com

DRAWING TITLE
PLUMBING LEVEL 1 PLAN

PROFESSIONAL SEAL

ENGINEER
DANIEL NOTO

CONSULTANT

mf Engineering

888 HARRISON DRIVE SUITE 725
ATLANTA, GA 30328 878.913.0228

SCALES AS STATED HEREON ARE VALID ON THE ORIGINAL DRAWING. THE DIMENSIONS OF WORK ARE SHOWN HEREON. THE SCALES OF THIS DRAWING ARE HEREBY CHANGED BY THE RATIO OF THE OVERALL SHEET DIMENSIONS OF THIS PRINT TO CORRESPONDING DIMENSIONS OF THE ORIGINAL DRAWING.

THIS DRAWING IS THE PROPERTY OF STANLEY LOVE STANLEY, P.C. AND IS NOT TO BE REPRODUCED BY COPY OR IN ANY MANNER. IT IS TO BE USED ONLY FOR THE PROJECT AND SITE SPECIFIC HEREIN AND IS NOT TO BE USED ON ANY OTHER PROJECT. IT IS TO BE RETURNED UPON REQUEST.

COPYRIGHT © 2016. ALL RIGHTS RESERVED BY STANLEY LOVE STANLEY, P.C.

DRAWING NO.
DATE
01/31/2020
PROJECT NO.
6919.2
DRAWING NO.

P-101

RELEASED FOR CONSTRUCTION 01/31/2020