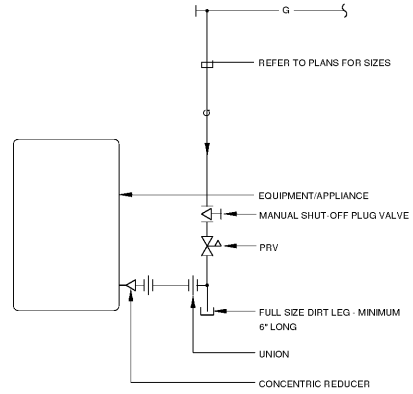


**GENERAL NOTES**

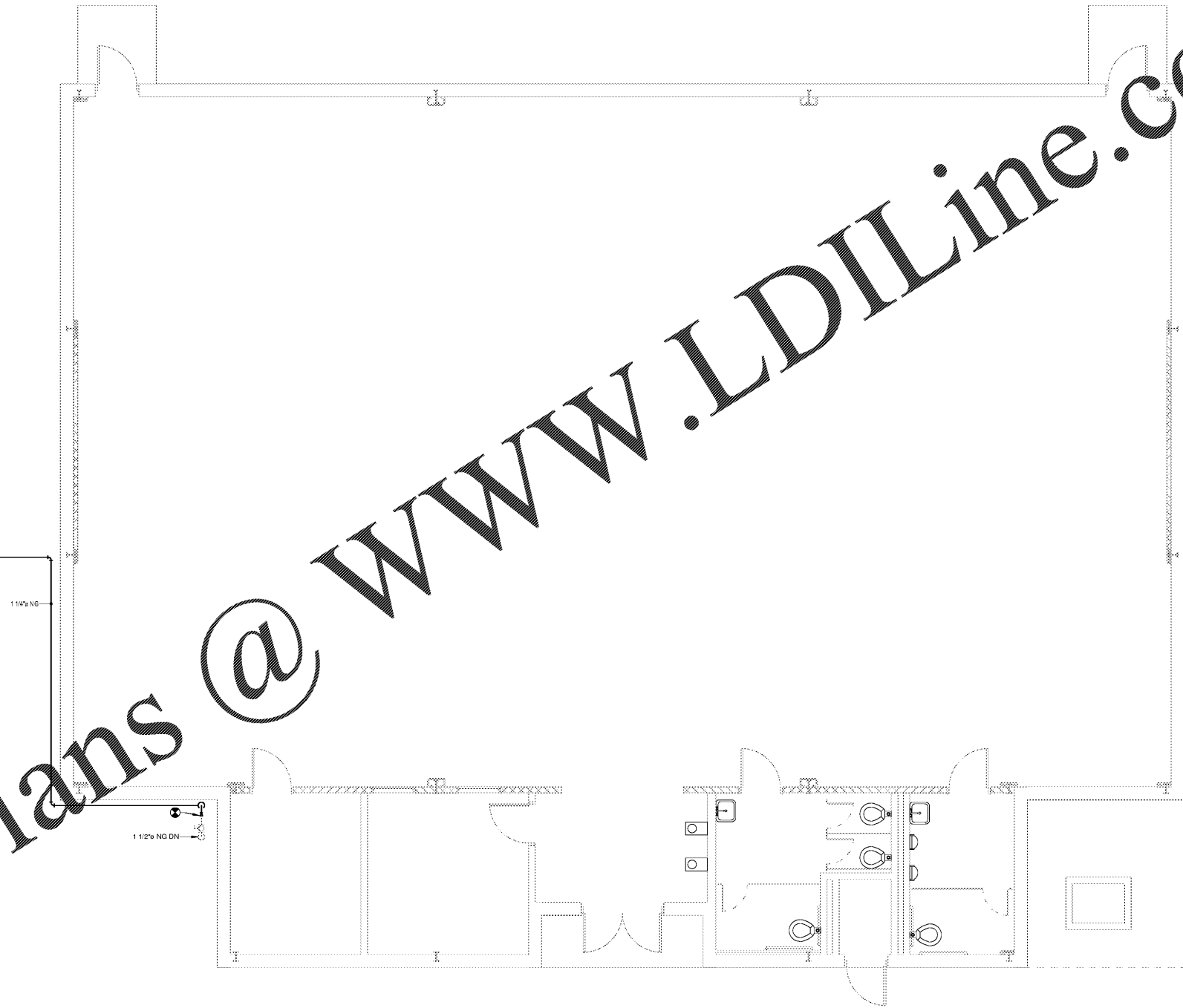
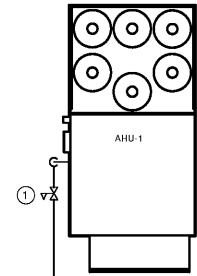
1. TOTAL DEVELOPED LENGTH OF NATURAL GAS PIPING IS 250 FEET. ACCOUNTING FOR FITTINGS. NATURAL GAS PIPING IS SIZED FOR PRESSURE OF 14" W.C. WITH A PRESSURE DROP OF 0.3" W.C.

**DRAWING NOTES**

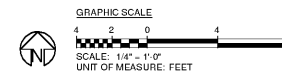
① SET PRESSURE REGULATOR TO 14" W.C.



② **DETAIL - GAS EQUIPMENT CONNECTION**  
SCALE: N.T.S.



① **LEVEL 1 PLUMBING PLAN**  
SCALE: 1/4" = 1'-0"



Order Plans @ [www.LDILine.com](http://www.LDILine.com)

**ELDRIDGE L MILLER ELEMENTARY  
SCHOOL GYM HVAC DESIGN**  
919 Martin Road  
Stone Mountain, Georgia 30088



ARCHITECTURE  
INTERIORS PLANNING  
PROGRAM MANAGEMENT  
1186 SPRING STREET, N.W.  
ATLANTA, GEORGIA 30309-3818  
404.576.0596  
404.576.0867 fax  
www.stanleylove-stanleypac.com

DRAWING TITLE  
**PLUMBING LEVEL 1  
PLAN**



CONSULTANT

**mf** Engineering  
888 HARRISON DRIVE SUITE 725  
ATLANTA, GA 30328 478.915.0028

SCALES AS STATED HEREON ARE VALID ON THE ORIGINAL DRAWING. THE DIMENSIONS OF THIS DRAWING ARE NOT TO BE REPRODUCED OR COPIED IN WHOLE OR IN PART, IF ANY, TO BE USED ON THIS PROJECT AND TO BE USED ON ANY OTHER PROJECT. IT IS TO BE RETURNED UPON REQUEST.

COPYRIGHT © 2016. ALL RIGHTS RESERVED BY STANLEY LOVE-STANLEY P.C.

DRAWING NO.  
DATE  
01/31/2020  
PROJECT NO.  
6919.1  
DRAWING NO.

**P-101**

01/31/2020  
RELEASED FOR CONSTRUCTION