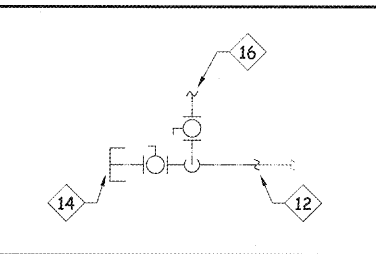
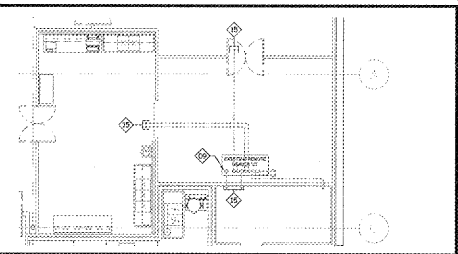
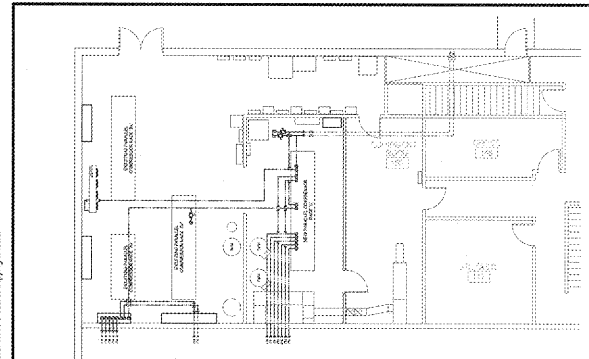


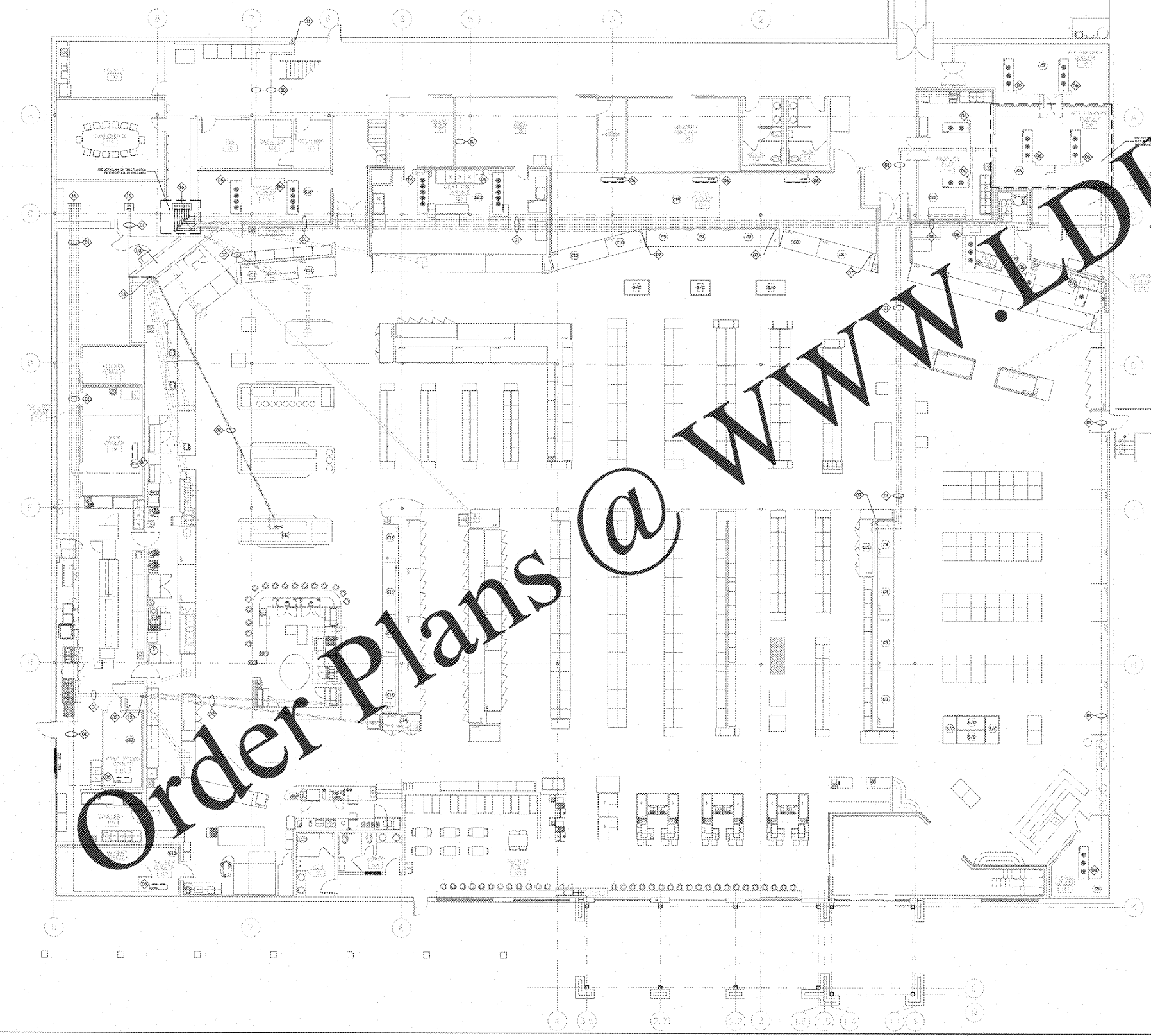
Copyright © All reports, plans, specifications, computer files, field notes, notes and other documents are instruments of service remain the property of GRS, p.c. GRS, p.c. shall retain all common law, statutory and other reserved rights, including the copyright therein. Any use or reproduction of this document without written permission from GRS, p.c. is a violation of Federal copyright law.



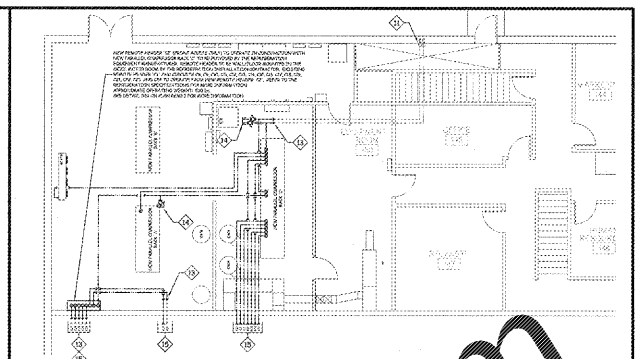
3 EX. REMOTE HDR. 'C' DETAIL SCALE: 1/8" = 1'-0"

4 NEW PIPING 'C' DETAIL SCALE: NTS

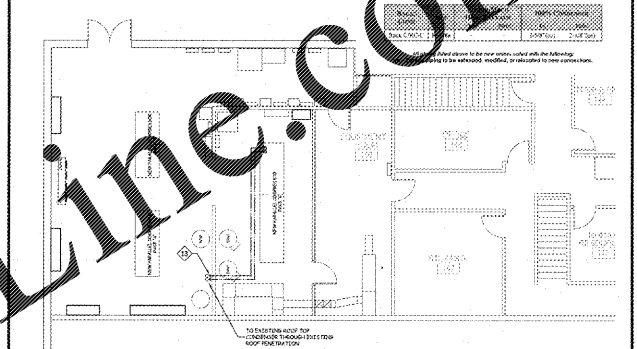
2 MEZZANINE MOTOR ROOM DETAIL (PHASE 3) SCALE: 1/8" = 1'-0"



1 REFRIGERATION PIPING PLAN - RACK 'C' SCALE: 1/8" = 1'-0"



5 MEZZANINE MOTOR ROOM DETAIL (FINAL) SCALE: 1/8" = 1'-0"



6 MEZZ. MOTOR ROOM DETAIL - H.R. / COND. PIPING SCALE: 1/8" = 1'-0"

**REFRIGERATION PIPING NOTES**

- THIS PLAN IS PICTORALLY DRAWN FOR CLARIFICATION PURPOSES ONLY. EACH LINE DISPLAYED REPRESENTS A LIQUID AND SUCTION LINE PAIR PER CIRCUIT.
- BEFORE INSTALLATION OF ANY REFRIGERATION PIPING, THE REFRIGERATION INSTALLATION CONTRACTOR SHALL COORDINATE ALL PIPING PATHS WITH THE STRUCTURAL STEEL IN CONSTRUCTION WITH THE GENERAL CONTRACTOR.
- THE REFRIGERATION INSTALLATION CONTRACTOR SHALL COORDINATE ALL PIPING PATHS TO AVOID CONFLICTS WITH ALL ELECTRICAL PANELS, SWITCHES AND CONDUITS. NO PIPING SHALL PASS ABOVE ELECTRICAL PANELS AND TRANSFORMERS OR THROUGH STAIRWELLS OR CORRIDORS.
- THE REFRIGERATION INSTALLATION CONTRACTOR SHALL COORDINATE ALL PIPING PATHS TO AVOID CONFLICTS WITH ALL OTHER TRADES (i.e. HVAC EQUIPMENT, LIGHTING FIXTURES, PLUMBING LINES, ETC.)
- THE REFRIGERATION INSTALLATION CONTRACTOR SHALL COORDINATE THE REMOVAL AND REINSTALLATION OF ALL CEILING TILES AND ASSOCIATED GRID FOR THE INSTALLATION OF ALL OVERHEAD PIPING WITH THE GENERAL CONTRACTOR.

**REFRIGERATION PIPING LEGEND**

REFRIGERATION PIPING - NEW - RACK 'C'  
REFRIGERATION PIPING - EXISTING - RACK 'C'

**KEYED NOTES**

- OVERHEAD DIRECT EXPANSION REFRIGERATION PIPING, TIGHT TO STRUCTURE, COORDINATE WITH MECHANICAL, ELECTRICAL, PLUMBING AND SPRINKLER INSTALLATION.
- DIRECT EXPANSION REFRIGERATION PIPING RUN IN PIPES BELOW FLOOR.
- OVERHEAD DIRECT EXPANSION REFRIGERATION PIPING DROP IN RISE PIPES / CONCEALED CHASE.
- OVERHEAD DIRECT EXPANSION REFRIGERATION PIPING DROP CONCEALED IN WALL.
- OVERHEAD DIRECT EXPANSION REFRIGERATION PIPING DROP SUPPORTED TO WALL/COLUMN.
- OVERHEAD DIRECT EXPANSION REFRIGERATION PIPING DROP TO EVAPORATOR CONNECTION.
- OVERHEAD DIRECT EXPANSION REFRIGERATION PIPING DROP TO CASE CONNECTION. PATH TO MATCH DECK.
- OVERHEAD DIRECT EXPANSION REFRIGERATION PIPING DROP TO CASE CONNECTION. PAINT TO MATCH HURD ABOVE DROP CEILING. WRAP IN STAINLESS STEEL ENVELOPE BELOW DROP CEILING, ENVELOPE BY RUC.
- DIRECT EXPANSION REFRIGERATION PIPING CONNECTION TO SERVICE HEADER.
- OVERHEAD DIRECT EXPANSION REFRIGERATION PIPING, TIGHT TO MEZZANINE, COORDINATE WITH MECHANICAL, ELECTRICAL, PLUMBING AND SPRINKLER INSTALLATION.
- OVERHEAD DIRECT EXPANSION REFRIGERATION PIPING RISE THROUGH MEZZANINE FLOOR PENETRATION.
- NEW DIRECT EXPANSION REFRIGERATION PIPING TO TIE INTO EXISTING DIRECT EXPANSION REFRIGERATION PIPING WITH NEW ICE AND BALL VALVE.
- EXTEND EXISTING DIRECT EXPANSION REFRIGERATION PIPING AS SPECIFIED NEW BRANCH/CONDUIT LINE SIZES.
- EXISTING DIRECT EXPANSION REFRIGERATION PIPING TO BE REMOVED AND CAPPED.
- SEE DETAIL W-1 ON THIS SHEET FOR DIRECT EXPANSION REFRIGERATION PIPING CONNECTION.
- SEE DETAIL W-3 ON THIS SHEET FOR DIRECT EXPANSION REFRIGERATION PIPING CONNECTION.

NO.	DESCRIPTION	AMOUNT	UNIT	TOTAL	PRICE	AMOUNT	UNIT	TOTAL	PRICE
1	MECHANICAL	2,100	sq. ft.	2,100	10.00	21,000			
2	ELECTRICAL	1,200	sq. ft.	1,200	10.00	12,000			
3	PLUMBING	800	sq. ft.	800	10.00	8,000			
4	GENERAL	1,000	sq. ft.	1,000	10.00	10,000			

All launch piping lines shown to be new shall noted with the following:  
 - Existing piping to remain.  
 - Existing piping to be removed, modified, or relocated to new connections.  
 - New existing piping to match existing if necessary.

7 REFRIGERATION NOTES

**9A**  
**GONTRAM ARCHITECTURE, INC.**  
 220 HORIZON DRIVE, SUITE 221  
 RALEIGH, NC 27615  
 PHONE: 919.875.5331  
 FAX: 919.875.5070  
 2020  
 THESE DOCUMENTS ARE INSTRUMENTS OF SERVICE AND SHALL REMAIN THE PROPERTY OF GONTRAM ARCHITECTURE, INC. NO PART OF THIS DOCUMENT SHALL BE REPRODUCED, COPIED, OR TRANSMITTED IN ANY FORM OR BY ANY MEANS, WITHOUT THE WRITTEN PERMISSION OF GONTRAM ARCHITECTURE, INC.  
 NORTH CAROLINA PROFESSIONAL SEAL NO. 555  
 SOUTH CAROLINA PROFESSIONAL SEAL NO. 24046  
**WHOLE FOODS MARKET**  
 REFRIGERATION RACK UPGRADE  
 PATRIOTS PLAZA SHOPPING CENTER  
 925 HOUSTON NORTH/UT BOULEVARD  
 MT. PLEASANT, SOUTH CAROLINA 29464  
 PROJECT DATE: JUNE 22, 2020  
 ISSUED: JUNE 22, 2020 FOR CONSTRUCTION  
 DRAWN BY: RSK  
 PROJECT NO: WF740001  
 APPROVED: DAO  
 RECORD:  
 CONTENTS:  
 REFRIGERATION PIPING PLAN - RACK 'C'  
 SHEET:  
**REM4.3**  
 Sheet 8 of 8