

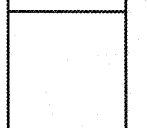


GONTRAM ARCHITECTURE, INC.
 220 HORIZON DRIVE, SUITE 221
 RALEIGH, NC 27603
 PHONE: 919.876.5331
 FAX: 919.876.5679
 605@gontramarch.com
 www.gontramarch.com

© Copyright 2020
 THESE DOCUMENTS ARE PREPARED FOR THE PROJECT AND ARE NOT TO BE REPRODUCED OR TRANSMITTED IN ANY FORM OR BY ANY MEANS, ELECTRONIC OR MECHANICAL, INCLUDING PHOTOCOPYING, RECORDING, OR BY ANY INFORMATION STORAGE AND RETRIEVAL SYSTEM, WITHOUT THE WRITTEN PERMISSION OF GONTRAM ARCHITECTURE, INC.



WHOLE FOODS MARKET
 REFRIGERATION RACK UPGRADE
 PATRIOTS PLAZA SHOPPING CENTER
 923 HOUSTON NORTH CUTT BOULEVARD
 MT. PLEASANT, SOUTH CAROLINA 29464



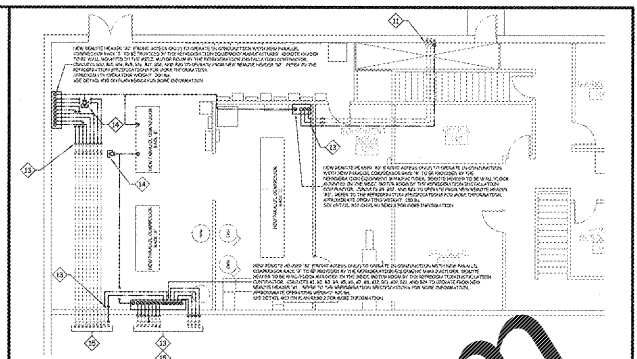
WHOLE FOODS MARKET
 REFRIGERATION RACK UPGRADE
 PATRIOTS PLAZA SHOPPING CENTER
 923 HOUSTON NORTH CUTT BOULEVARD
 MT. PLEASANT, SOUTH CAROLINA 29464

PROJECT DATE: JUNE 22, 2020
 SHEET NO.: 22-2000-01
 PROJECT NAME: REFRIGERATION RACK UPGRADE

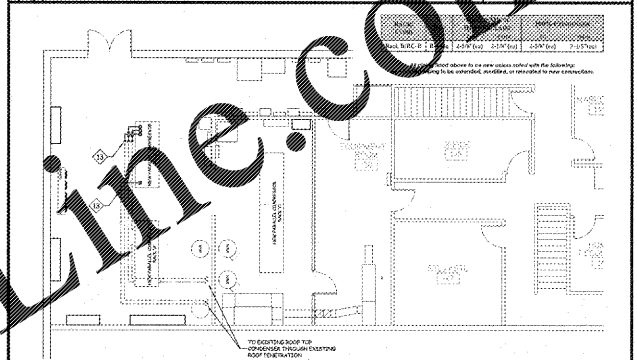
DRAWN BY: RSK
 PROJECT NO.: WFM20001
 APPROVED: DAO
 PROJECT TITLE: REFRIGERATION RACK UPGRADE
 SHEET: REFRIGERATION PIPING PLAN - RACK 'B'

REVISIONS:
 1. REVISION 1: 06/22/2020
 2. REVISION 2: 06/22/2020
 3. REVISION 3: 06/22/2020
 4. REVISION 4: 06/22/2020
 5. REVISION 5: 06/22/2020
 6. REVISION 6: 06/22/2020
 7. REVISION 7: 06/22/2020
 8. REVISION 8: 06/22/2020
 9. REVISION 9: 06/22/2020
 10. REVISION 10: 06/22/2020

REVISIONS:
 1. REVISION 1: 06/22/2020
 2. REVISION 2: 06/22/2020
 3. REVISION 3: 06/22/2020
 4. REVISION 4: 06/22/2020
 5. REVISION 5: 06/22/2020
 6. REVISION 6: 06/22/2020
 7. REVISION 7: 06/22/2020
 8. REVISION 8: 06/22/2020
 9. REVISION 9: 06/22/2020
 10. REVISION 10: 06/22/2020



3 MEZZANINE MOTOR ROOM DETAIL (FINAL) SCALE: 1/8" = 1'-0"



4 MEZZ. MOTOR ROOM DETAIL - H.R. / COND. PIPING SCALE: 1/8" = 1'-0"

- REFRIGERATION PIPING NOTES**
- THIS PLAN IS PICTORIAL DRAWN FOR CLARIFICATION PURPOSES ONLY. EACH LINE DISPLAYED REPRESENTS A LIQUID AND SUCTION LINE PAIR PER CIRCUIT.
 - BEFORE INSTALLATION OF ANY REFRIGERATION PIPING, THE REFRIGERATION INSTALLATION CONTRACTOR SHALL COORDINATE ALL PIPING PATHS WITH THE STRUCTURAL STEEL IN CONJUNCTION WITH THE GENERAL CONTRACTOR.
 - THE REFRIGERATION INSTALLATION CONTRACTOR SHALL COORDINATE ALL PIPING PATHS TO AVOID CONFLICTS WITH ALL ELECTRICAL PANELS, STAIRWELLS AND CORRIDORS. NO PIPING SHALL PASS ABOVE ELECTRICAL PANELS AND TRANSFORMERS OR THROUGH STAIRWELLS OR CORRIDORS.
 - THE REFRIGERATION INSTALLATION CONTRACTOR SHALL COORDINATE ALL PIPING PATHS TO AVOID CONFLICTS WITH ALL OTHER TRADES (i.e. HVAC EQUIPMENT, LIGHTING FIXTURES, PLUMBING LINES, ETC.)
 - THE REFRIGERATION INSTALLATION CONTRACTOR SHALL COORDINATE THE REMOVAL AND REINSTALLATION OF ALL CEILING TELES AND ASSOCIATED GRID FOR THE INSTALLATION OF ALL OVERHEAD PIPING WITH THE GENERAL CONTRACTOR.

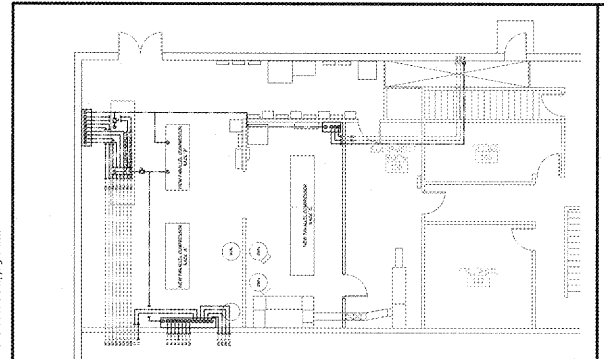
- REFRIGERATION PIPING LEGEND**
- REFRIGERATION PIPING - NEW - RACK 'B'
 - REFRIGERATION PIPING - EXISTING - RACK 'B'

- KEYED NOTES**
- ◇ OVERHEAD DIRECT EXPANSION REFRIGERATION PIPING TO BE INSTALLED TO STRUCTURE. COORDINATE WITH MECHANICAL, ELECTRICAL, PLUMBING AND STRUCTURAL INSTALLATION.
 - ◇ DIRECT EXPANSION REFRIGERATION PIPING RUN IN PIPE CHASE BELOW FLOOR.
 - ◇ OVERHEAD DIRECT EXPANSION REFRIGERATION PIPING DROP IN RACK SET / CONCEALED CHASE.
 - ◇ OVERHEAD DIRECT EXPANSION REFRIGERATION PIPING DROP CONCEALED IN WALL.
 - ◇ OVERHEAD DIRECT EXPANSION REFRIGERATION PIPING DROP SUPPORTED TO WALL/COLUMN.
 - ◇ OVERHEAD DIRECT EXPANSION REFRIGERATION PIPING DROP TO EVAPORATOR CONNECTION.
 - ◇ OVERHEAD DIRECT EXPANSION REFRIGERATION PIPING DROP TO CASE CONNECTION. PAINT TO MATCH DECK.
 - ◇ OVERHEAD DIRECT EXPANSION REFRIGERATION PIPING DROP TO CASE CONNECTION. PAINT TO MATCH DECK ABOVE DROP CEILING. WARP IN STAIRWELL SPACES. ENCLOSE REFRIGERATION PIPING IN STAIRWELL ENCLOSURE BY RAC.
 - ◇ DIRECT EXPANSION REFRIGERATION PIPING CONNECTION TO REMOTE HEADERS.
 - ◇ OVERHEAD DIRECT EXPANSION REFRIGERATION PIPING TO BE INSTALLED TO MEZZANINE. COORDINATE WITH MECHANICAL, ELECTRICAL, PLUMBING AND STRUCTURAL INSTALLATION.
 - ◇ OVERHEAD DIRECT EXPANSION REFRIGERATION PIPING DROP RISE THROUGH MEZZANINE FLOOR PENETRATION.
 - ◇ NEW DIRECT EXPANSION REFRIGERATION PIPING TO TIE INTO EXISTING DIRECT EXPANSION REFRIGERATION PIPING WITH NEW TEE AND BALL VALVE.
 - ◇ EXTEND EXISTING DIRECT EXPANSION REFRIGERATION PIPING AS SPECIFIED NEW BRANCH CIRCUIT LINE SIZING.
 - ◇ EXISTING DIRECT EXPANSION REFRIGERATION PIPING TO BE TERMINATED AND CAPED.
 - ◇ SEE DETAIL #12 ON THIS SHEET FOR DIRECT EXPANSION REFRIGERATION PIPING CONNECTIONS.
 - ◇ SEE DETAIL #3 ON THIS SHEET FOR DIRECT EXPANSION REFRIGERATION PIPING CONNECTIONS.

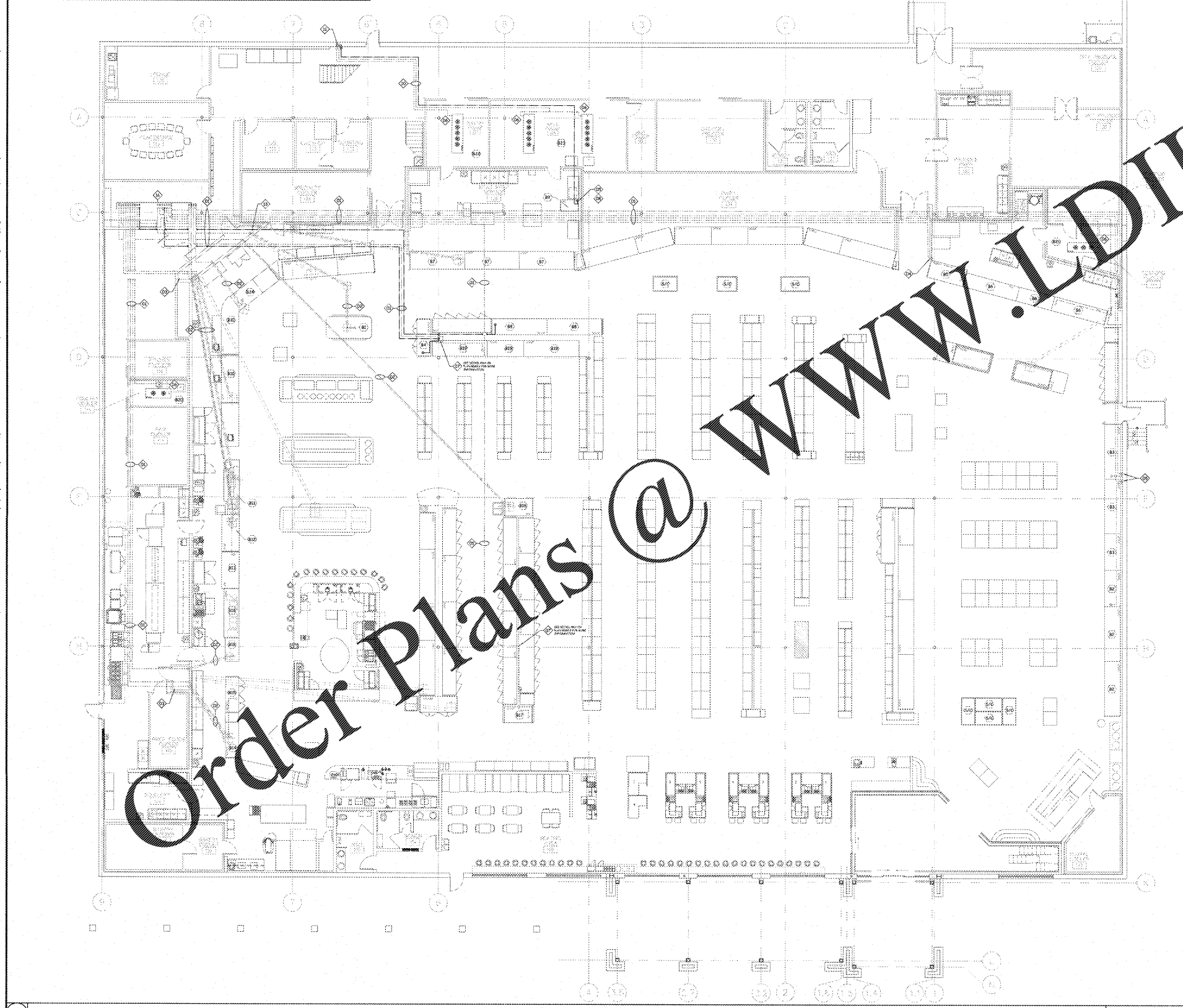
NO.	DESCRIPTION	QTY	UNIT	PRICE	TOTAL
1	1/2" COPPER PIPE	100	LINEAL FEET	1.50	150.00
2	3/4" COPPER PIPE	50	LINEAL FEET	2.00	100.00
3	1" COPPER PIPE	20	LINEAL FEET	2.50	50.00
4	1/2" COPPER FITTING	500	PIECES	0.30	150.00
5	3/4" COPPER FITTING	250	PIECES	0.40	100.00
6	1" COPPER FITTING	100	PIECES	0.50	50.00
7	1/2" COPPER VALVE	50	PIECES	0.80	40.00
8	3/4" COPPER VALVE	25	PIECES	1.20	30.00
9	1" COPPER VALVE	10	PIECES	1.50	15.00
10	1/2" COPPER ELBOW	1000	PIECES	0.15	150.00
11	3/4" COPPER ELBOW	500	PIECES	0.20	100.00
12	1" COPPER ELBOW	200	PIECES	0.25	50.00
13	1/2" COPPER TEE	500	PIECES	0.30	150.00
14	3/4" COPPER TEE	250	PIECES	0.40	100.00
15	1" COPPER TEE	100	PIECES	0.50	50.00
16	1/2" COPPER CROSS	50	PIECES	0.40	20.00
17	3/4" COPPER CROSS	25	PIECES	0.50	12.50
18	1" COPPER CROSS	10	PIECES	0.60	6.00
19	1/2" COPPER END CAP	500	PIECES	0.10	50.00
20	3/4" COPPER END CAP	250	PIECES	0.15	37.50
21	1" COPPER END CAP	100	PIECES	0.20	20.00
22	1/2" COPPER FLANGE	50	PIECES	0.40	20.00
23	3/4" COPPER FLANGE	25	PIECES	0.50	12.50
24	1" COPPER FLANGE	10	PIECES	0.60	6.00
25	1/2" COPPER GASKET	500	PIECES	0.05	25.00
26	3/4" COPPER GASKET	250	PIECES	0.07	17.50
27	1" COPPER GASKET	100	PIECES	0.09	9.00
28	1/2" COPPER WELD NUT	500	PIECES	0.10	50.00
29	3/4" COPPER WELD NUT	250	PIECES	0.15	37.50
30	1" COPPER WELD NUT	100	PIECES	0.20	20.00
31	1/2" COPPER LOCK WASH	500	PIECES	0.05	25.00
32	3/4" COPPER LOCK WASH	250	PIECES	0.07	17.50
33	1" COPPER LOCK WASH	100	PIECES	0.09	9.00
34	1/2" COPPER NUT	500	PIECES	0.05	25.00
35	3/4" COPPER NUT	250	PIECES	0.07	17.50
36	1" COPPER NUT	100	PIECES	0.09	9.00
37	1/2" COPPER WASHER	500	PIECES	0.05	25.00
38	3/4" COPPER WASHER	250	PIECES	0.07	17.50
39	1" COPPER WASHER	100	PIECES	0.09	9.00
40	1/2" COPPER BRACKET	500	PIECES	0.10	50.00
41	3/4" COPPER BRACKET	250	PIECES	0.15	37.50
42	1" COPPER BRACKET	100	PIECES	0.20	20.00
43	1/2" COPPER HANGER	500	PIECES	0.10	50.00
44	3/4" COPPER HANGER	250	PIECES	0.15	37.50
45	1" COPPER HANGER	100	PIECES	0.20	20.00
46	1/2" COPPER CLAMP	500	PIECES	0.10	50.00
47	3/4" COPPER CLAMP	250	PIECES	0.15	37.50
48	1" COPPER CLAMP	100	PIECES	0.20	20.00
49	1/2" COPPER RING	500	PIECES	0.10	50.00
50	3/4" COPPER RING	250	PIECES	0.15	37.50
51	1" COPPER RING	100	PIECES	0.20	20.00
52	1/2" COPPER RING	500	PIECES	0.10	50.00
53	3/4" COPPER RING	250	PIECES	0.15	37.50
54	1" COPPER RING	100	PIECES	0.20	20.00
55	1/2" COPPER RING	500	PIECES	0.10	50.00
56	3/4" COPPER RING	250	PIECES	0.15	37.50
57	1" COPPER RING	100	PIECES	0.20	20.00
58	1/2" COPPER RING	500	PIECES	0.10	50.00
59	3/4" COPPER RING	250	PIECES	0.15	37.50
60	1" COPPER RING	100	PIECES	0.20	20.00

At branch piping listed above to be new unless noted with the following:
 - Existing piping to remain
 - Existing piping to be removed, modified or relocated to new connections.
 - Existing working piping to match existing conditions.

5 REFRIGERATION NOTES



2 MEZZANINE MOTOR ROOM DETAIL (PHASE 3) SCALE: 1/8" = 1'-0"



1 REFRIGERATION PIPING PLAN - RACK 'B' SCALE: 1/8" = 1'-0"

COPYRIGHT © All reports, plans, specifications, computer files, field data, notes and other documents are trademarks or services prepared by GONTRAM ARCHITECTURE, INC. (GAT). GAT, p.c. shall retain all copyright rights, including the copyright therein. Any use or reproduction of this document without written permission from GAT, p.c. is a violation of Federal copyright law.

Order Plans @ WWW.LDILINE.COM