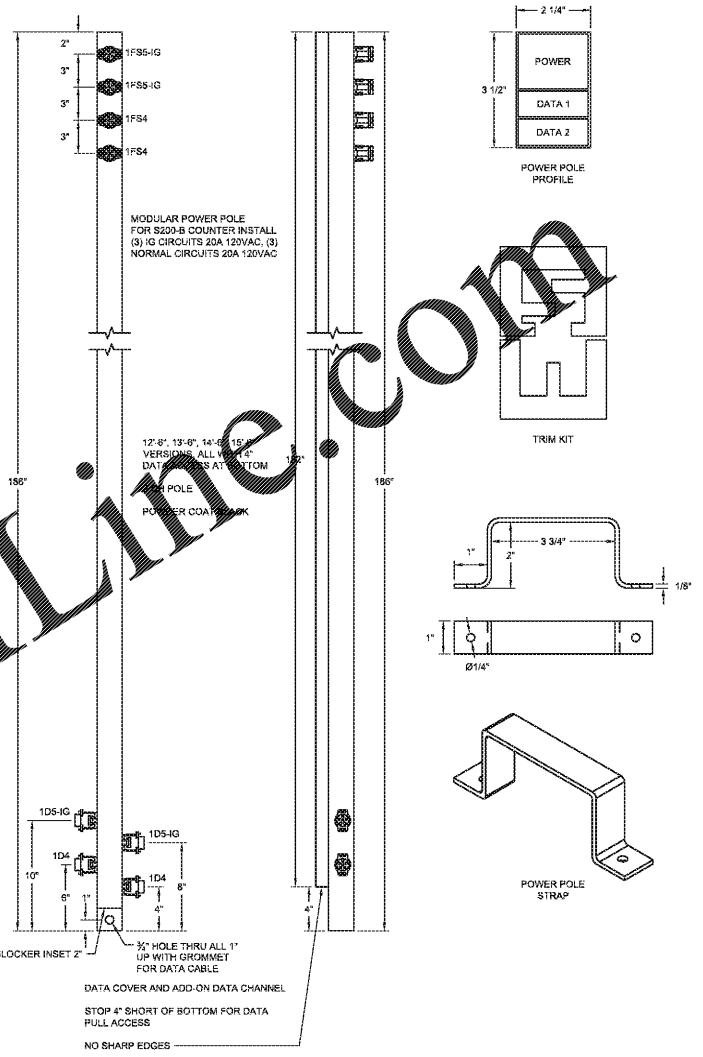


\* CIRCUIT B/33 TO BE USED FOR SIDE WALLPACKS. USUALLY ONLY ONE SIDE IS REQUIRED TO BE ILLUMINATED. USE SPARE CIRCUITS WHEN NEEDED. ROUTE THRU CONTACTOR C2 ON EMS2.

1 LIGHTING PLAN  
SCALE: 1/8" = 1' - 0"

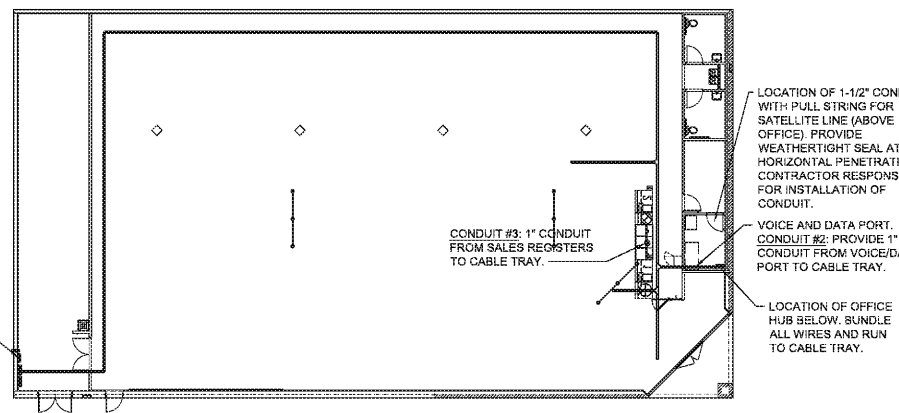
COORDINATE BUILDING SIGN SIZE WITH DOLLAR GENERAL SIGN DEPARTMENT BY EMAILING TO SIGNAGE@DOLLARGENERAL.COM. LOCATE JBOX ON INTERIOR OF PARAPET AND CENTER OF METAL PANEL.



3 REGISTER POWER POLE  
SCALE: NTS

LEDS LIGHT FIXTURE SCHEDULE					
SYMBOL	TYPE	MANF.	PART #	DESCRIPTION	W
A	A	ETI	54573161	4' LED FIXTURE AERIAL MOUNT INCLUDES (2) 8 FT CABLES	33
A1	A1	ETI	54573161	4' LED FIXTURE SURFACE MOUNT	33
B	B	ETI	54260161	2' LED FIXTURE SURFACE MOUNT	20
C	C	ETI	55301101	LED EXIT SIGN	-
D	D	ETI	55502201	LED EXIT SIGN / EMERGENCY LIGHT COMBO WITH (2) HEADS	-
E	E	ETI	65501101	LED EMERGENCY LIGHT WITH (2) HEADS	-
F	F	ETI	55503101	LED INTEGRATED EMERGENCY LIGHT WITH HEADS	-
G	TECHLIGHT	LHSPT-1-C-41-F1-BZ		LED WALL PACK	38
H	TECHLIGHT	LS9T-1-C-X-T3-F1-BZ ON W/UP542		LED AREA LIGHT ON WALL MOUNT 42" EXTENSION ARM	147
S	TECHLIGHT	LS9T-1-C-X-T3-F1-BZ ON SS3P-24-4-11-BZ-DM2180		(2) LED AREA LIGHTS ON 24" POLE	294

NOTE: REFER TO SHEET '01' FOR NATIONAL ACCOUNT VENDORS LIST



2 CABLE TRAY PLAN AND CONDUIT DIAGRAM  
SCALE: 1/16" = 1' - 0"

**DISCLAIMER AND NOTICE:**  
THE DESIGN BASIS FOR THESE DOCUMENTS WERE BASED ON THE STANDARD PROTOTYPE DRAWINGS PROVIDED TO US BY DOLLAR GENERAL. DOLLAR GENERAL, THROUGH THEIR OWNERS REPRESENTATIVE, THE GENERAL CONTRACTOR SHALL BE RESPONSIBLE FOR FIELD VERIFYING ALL EXISTING CONDITIONS PRIOR TO CONSTRUCTION WITH ANY SITE WORK, MATERIALS, FORMWORK, SCHEDULING, ETC. ANY DISCREPANCIES BETWEEN THESE DOCUMENTS AND ACTUAL FIELD CONDITIONS SHALL BE BROUGHT TO THE ATTENTION OF THE ARCHITECT PRIOR TO ANY WORK BEING DONE. ANY REQUIRED ENGINEERING CHANGES TO MATCH THE EXISTING SITE CONDITIONS SHALL BE TREATED AS ADDITIONAL SERVICES.

**Robert E. Walker, IV**  
Architect  
2229 FIRST AVE. SOUTH  
SUITE 110  
BIRMINGHAM, Alabama  
35233  
T-205.254.3212  
F-205.254.3269

**ROBERT M. BEATTIE, PE**  
REG. NO. 25905  
PROFESSIONAL ENGINEER  
7-21-20



**DG**  
**DOLLAR GENERAL BUILDING**  
**Prototype 9100 SF E**  
**Store # 22323**  
DG Villa Rica  
101 Prospector Drive  
Villa Rica, GA

**CONSTRUCTION DOCUMENTS**  
PROJECT NO.: 8095.89  
ISSUED: 07/21/2020

**LIGHTING PLAN**

**E2.1**