

- ### GENERAL PLUMBING NOTES
1. PROVIDE ALL SACKING, SUPPORTS AND CARRIERS FOR FIXTURES
 2. CONTRACTOR SHALL PROVIDE APPROVED ACCESS DOORS IN FRAMED HOLES FOR ALL VALVES AND TRAP PRIMERS WHICH MUST BE LOCATED IN INACCESSIBLE LOCATIONS.
 3. ALL WATER PIPING SHALL BE PITCHED IN DIRECTION OF FLOW TO ALLOW FOR SYSTEM DRAINING.
 4. INSTALL WATER MAIN SHUT-OFF VALVE UPSTREAM FROM PRESSURE REGULATOR.
 5. INSTALL WATER PRESSURE REGULATOR WHERE AVAILABLE UTILITY PRESSURE EXCEEDS 70 PSI. SET PRESSURE REGULATOR AT 65 PSI.
 6. PROVIDE BACKFLOW PREVENTER ASSEMBLY WITH TAMPER RESISTANT ACCESS CABINET PER LOCAL CODE.
 7. ROUTE WATER PIPING IN SALES AREA, OVERHEAD AS HIGH AS POSSIBLE.
 8. DRAIN, WASTE AND VENT LINES SHALL PASS INSPECTION UNDER HEAD OF WATER BY SYSTEM WITH WATER TO TOP OF HIGHEST VENT STACK.
 9. WATER LINES SHALL PASS INSPECTION OF FOUR (4) HOURS UNDER 150 PSI PRESSURE. BEFORE ANY USE OF SYSTEM IS MADE FOR DOMESTIC PURPOSES, IT SHALL BE DISINFECTED BY SLOWLY FILLING WITH WATER TO WHICH A DISINFECTING AGENT HAS BEEN INJECTED AT A RATE OF 50 P.P.M. OF CHLORINE, WHICH SHOULD BE ALLOWED TO STAND IN THE PIPING FOR AT LEAST 24 HOURS. AFTER WHICH TESTS FOR RESIDUAL CHLORINE SHALL BE MADE. NOT LESS THAN FIVE (5) P.P.M. OF RESIDUAL CHLORINE AT EVERY WATER OUTLET IN THE BUILDING. IF THE RESIDUAL IS LESS THAN FIVE P.P.M. THE CONNECTIONS SHALL BE REPEATED UNTIL THE REQUIRED RESIDUAL IS OBTAINED AT EVERY OUTLET. AFTER REQUIRED RESIDUAL IS OBTAINED AT EVERY OUTLET THE SYSTEM SHALL BE FLUSHED UNTIL THE CHLORINE LEVEL AT EVERY OUTLET IS REDUCED TO THAT OF INCOMING WATER SUPPLY.
 10. SEPTIC SYSTEM NOT ALLOWED WITHOUT WRITTEN APPROVAL BY DOLLAR GENERAL.
 11. HOLDING TANK SYSTEMS NOT ALLOWED.
 12. LIFT STATIONS ARE NOT ALLOWED WITHOUT WRITTEN APPROVAL BY DOLLAR GENERAL.
 13. CONTRACTOR RESPONSIBLE FOR ALL PUBLIC UTILITY CONNECTIONS.
 14. ALL PLUMBING MATERIALS SHALL COMPLY WITH CODE.
 15. REFER TO SHEET P2 FOR MATERIALS.

CIVIL ENGINEERING DESIGN COORDINATION NOTICE

NOTICE TO ALL PARTIES HAVING AN INTEREST IN THE CONSTRUCTION PROJECT:

1. CIVIL ENGINEERING WORK FOR THIS PROJECT IS BEING PERFORMED BY OTHERS.
2. CONTRACTOR'S RELY ON DOCUMENTS NOT COORDINATED WITH THE CIVIL ENGINEERING WORK SHALL DO SO AT THEIR OWN RISK.
3. COORDINATION WITH THE CIVIL ENGINEERING DOCUMENTS HAS BEEN COMPLETED ONLY AS SHOWN BELOW.

CIVIL ENGINEERING CONSULTANT: COMPANY NAME, ADDRESS, CITY, STATE, CONTACT: XXX, PHONE: (XXX) XXX-XXXX

CIVIL SHEET DWG. NO.	CIVIL SHEET DWG. TITLE	REV. NO.	REV. DATE	REV. NO.	REV. DATE	REV. NO.	REV. DATE

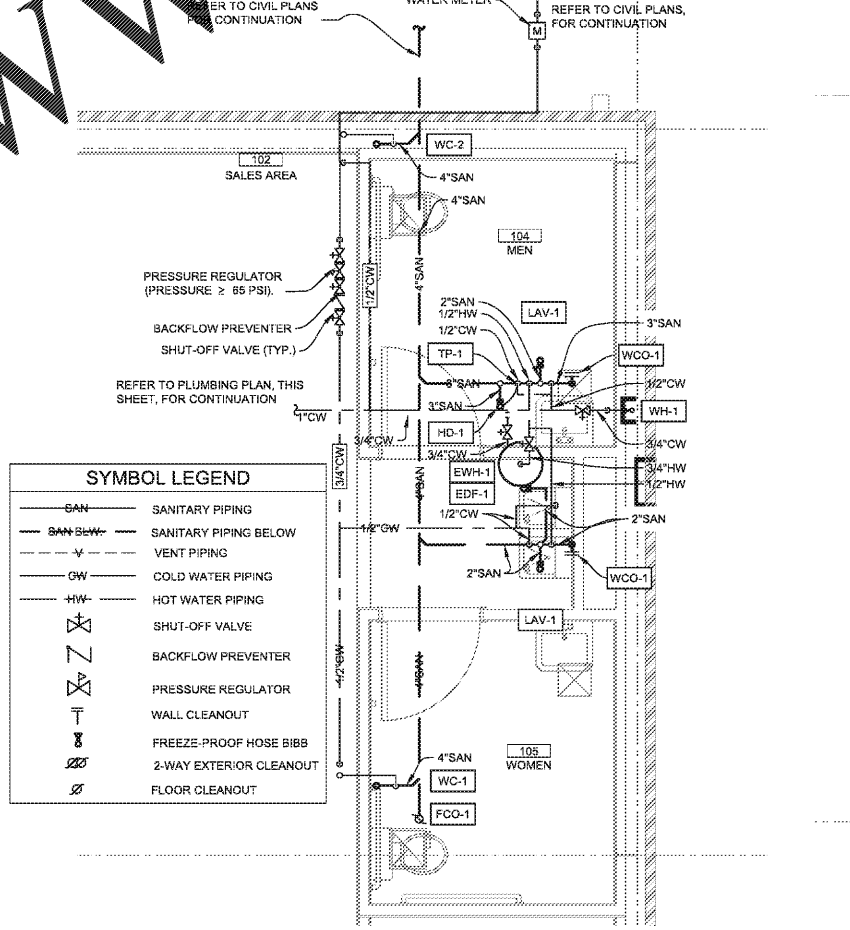
COORDINATION CHECKED BY: INITIAL DATE INITIAL DATE INITIAL DATE

1 PLUMBING PLAN
P2.0 1/8" = 1'-0"

PLUMBING FIXTURE SCHEDULE

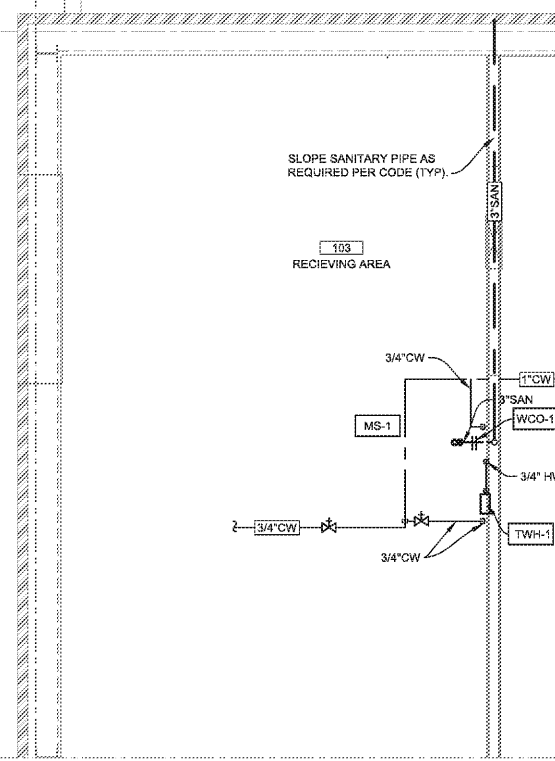
MARK	DESCRIPTION	HW CONNECTION	CW CONNECTION	WASTE CONNECTION	VENT CONNECTION	REMARKS
LAV-1	ADA LAVATORY	1/2"	1/2"	2"	1-1/2"	20"x18" WALL HUNG ADA LAVATORY W/ FRONT OVERFLOW, CONCEALED HANGERS & 4" CENTERS. AMERICAN STANDARD LUCERNE #0355.012 OR EQUAL. TRIP SHALL BE POLISHED CHROME-PLATED CAST BRASS BODY WITH TEMPERATURE MIXING VALVE, 0.5 GPM SPRAY, CHROME-PLATED METAL PUSH BUTTON. T&S BRASS B-0805-VR-VF05 OR EQUAL. INSULATE EXPOSED DRAIN WATER LINES WITH TRUESBORO LAV GUARD KIT #102 E-Z. PROVIDE SUPPLIES, STOP VALVES AND P-TRAP.
WC-1	ADA WATER CLOSET LEFT-HAND TRIP LEVER	-	1/2"	4"	2"	FLOOR MOUNTED ADA WATER CLOSURE CHINA BODY MATED 1.28 FLUSH GALLON CLOSE COUPLED TWO PIECE SIPHON JET WATER CLOSURE FLUSH TANK WITH 17" ROUGH-IN. AMERICAN STANDARD CHAMPION 4 "RIGHT HEIGHT" #255E. TRIP OR EQUAL. PROVIDE STOP VALVE, FLEXIBLE SUPPLY LINE, OPEN FRONT SEAT AMERICAN STANDARD #5901.100 OR EQUAL. PROVIDE SUPPLIES AND P-TRAP.
WC-2	ADA WATER CLOSET RIGHT-HAND TRIP LEVER	-	1/2"	4"	2"	FLOOR MOUNTED ADA WATER CLOSURE CHINA BODY MATED 1.6 FLUSH 1.6 GALLON CLOSE COUPLED TWO PIECE SIPHON JET WATER CLOSURE FLUSH TANK WITH 12" ROUGH-IN. AMERICAN STANDARD CHAMPION 4 "RIGHT HAND" #255E. TRIP OR EQUAL. PROVIDE SUPPLY & STOP. PROVIDE OPEN FRONT SEAT AMERICAN STANDARD #5901.100 OR EQUAL. PROVIDE STOP VALVE AND FLEXIBLE SUPPLY.
EWH-1	ELECTRIC WATER HEATER	3/4"	3/4"	-	-	PROVIDE 20 GALLON ELECTRIC WATER HEATER. 1.85KW @ 120V WITH MANUFACTURER SUPPLIED TEMPERATURE AND PRESSURE RELIEF VALVE. A.O. SMITH #EJC-20, OR EQUAL. SET WATER HEATER TEMPERATURE AT 110°F MAXIMUM. PROVIDE THERMAL EXPANSION TANK. AMTROL WELL-X-TROL WX-103, OR EQUAL. EXPANSION TANK SUPPORT: IT IS THE CONTRACTOR'S RESPONSIBILITY TO PROVIDE ADEQUATE SUPPORT FOR THE EXPANSION TANK. SUPPORT TO ADJACENT WALL OR FROM EXISTING STRUCTURE ABOVE WITH UNISTRUT. DO NOT SUPPORT FROM PIPE ALONE. PROVIDE DRAIN PAN UNDER SHELF-MOUNTED WATER HEATER. PROVIDE SEISMIC STRAPPING ON WATER HEATER. TERMINATE DRAIN LINE IN MOP SINK (EWH-1). PROVIDE FULL SIZE T&P RELIEF LINE. REFER TO WATER HEATER DETAIL ON SHEET P1.0 FOR ADDITIONAL INFORMATION.
MS-1	MOP SINK	3"	3"	3"	2"	24" X 24" MOLDED STONE MOP SERVICE BASIN, WITH 3" DRAIN. FIAT #MSB-2424 OR EQUAL. PROVIDE SERVICE FAUCET WITH PAIL HOOK & INTEGRAL VACUUM BREAKER, MOP BRACKET, FLAT STAINLESS STEEL STRAINER AND HOSE & BRACKET. FIAT #850 AA, 889 CC, 1453 BB & 832 AA OR EQUAL. PROVIDE SUPPLIES AND P-TRAP.
EDF-1	BARRIER FREE ELECTRIC DRINKING FOUNTAIN	1/2"	-	2"	1-1/2"	TWO-STATION, WALL MOUNTED, ELECTRIC DRINKING FOUNTAIN, BARRIER-FREE ACCESS (ADA), FRONT ONLY EASY TOUCH CONTROL, HIGH UNIT ON RIGHT. ELKAY #E2TLRDC OR EQUAL. PROVIDE SUPPLY, STOP VALVE & P-TRAP. PROVIDE CANE AFFORD AS REQUIRED.
WH-1	WALL HYDRANT	3/4"	-	-	-	FREEZE-PROOF WALL HYDRANT WITH BRONZE BODY & ANTI-SIPHON VACUUM BREAKER, BOX AND LOCKING COVER. PROVIDE WITH HOSE CONNECTION AND MOUNT AT 24" ABOVE GRADE. WOODFORD #885 OR EQUAL.
WCO-1	WALL CLEAN-OUT	-	-	AS SHOWN ON PLANS	-	SIZE & INSTALL AS SHOWN ON PLANS. JOSAM, ZURN OR EQUAL.
ECO-1	EXTERIOR CLEAN-OUT	-	-	4"	-	PROVIDE TRAFFIC RATED, 2-WAY, EXTERIOR CLEANOUT. TYLER PIPE #003519, OR EQUAL.
FCO-1	FLOOR CLEAN-OUT	-	-	AS SHOWN ON PLANS	-	PROVIDE ADJUSTABLE FLOOR CLEANOUT WITH WATERTIGHT TAPERED THREADED PLUG AND ROUND SCORRIATED SECURED TOP, ADJUSTABLE TO FINISHED FLOOR. SIZE & INSTALL AS SHOWN ON PLANS. JOSAM, ZURN OR EQUAL.

ALL PLUMBING FIXTURES SHALL BE HIGH EFFICIENCY FIXTURES-SECTION 301.1 AMENDMENTS



2 ENLARGED TOILET PLAN
P2.0 3/8" = 1'-0"

- ### NOTES:
1. REFER TO SHEET P2, FOR ROUTING OF DOMESTIC WATER, SANITARY SEWER AND SANITARY VENT PIPING.
 2. PROVIDE TAMPER PROOF CABINET WITH ACCESS PANEL FOR BACKFLOW ASSEMBLY.
 3. DOMESTIC WATER, SANITARY SEWER AND SANITARY VENT PIPE ROUTING ARE DIAGRAMMATIC ONLY, COORDINATE PIPE ROUTING WITH FIELD CONDITIONS. REFER TO PIPING DIAGRAMS ON SHEET P2.



3 ENLARGED STOCKROOM PLAN
P2.0 N.T.S.

DISCLAIMER NOTICE:
THE DESIGN BASIS FOR THESE DOCUMENTS WERE BASED ON THE STANDARD PROTOTYPE DRAWINGS PROVIDED TO US BY DOLLAR GENERAL THROUGH THEIR OWNERS REPRESENTATIVE. THE GENERAL CONTRACTOR SHALL BE RESPONSIBLE FOR FIELD VERIFYING ALL EXISTING CONDITIONS PRIOR TO CONSTRUCTION WITH ANY SITE WORK, MATERIALS, FOUNDATIONS, BUILDING FABRICATION, ETC. ANY DISCREPANCIES BETWEEN THESE DOCUMENTS AND ACTUAL FIELD CONDITIONS SHALL BE BROUGHT TO THE ATTENTION OF THE ARCHITECT PRIOR TO ANY WORK BEING DONE. ANY REQUIRED ENGINEERING CHANGES TO MATCH THE EXISTING SITE CONDITIONS SHALL BE TREATED AS ADDITIONAL SERVICES.

Robert E. Walker, IV
Architect
2229 FIRST AVE. SOUTH
SUITE 110
BIRMINGHAM, Alabama
35233
T-205.254.3212
F-205.254.3269

ROBERT M. BEATTIE, PE
2875 SOUTH 36th COURT - CHANDLER, IL, 60226
8000 NORTON LANE 407 FLO 300 - FARMER'S BLDG 401 4TH
PHOENIX, AZ 85018
WWW.MBEATTIE.COM - EMAIL: RBEATTIE@MBEATTIE.COM
STRUCTURAL, MECH, ELEC, SAN, TRM - EMAIL: RBEATTIE@MBEATTIE.COM
ELECTRICAL, MECH, ELEC, SAN, TRM - EMAIL: RBEATTIE@MBEATTIE.COM
MECHANICAL, MECH, ELEC, SAN, TRM - EMAIL: RBEATTIE@MBEATTIE.COM
ROBERT M. BEATTIE, PE, REG. #



DOLLAR GENERAL BUILDING
Prototype 9100 SF E
Store # 22323
DG Villa Rica
101 Prospector Drive
Villa Rica, GA

CONSTRUCTION DOCUMENTS

PROJECT NO.: 8095.89
ISSUED: 07/21/2020

PLUMBING PLANS & SCHEDULES

P2.0