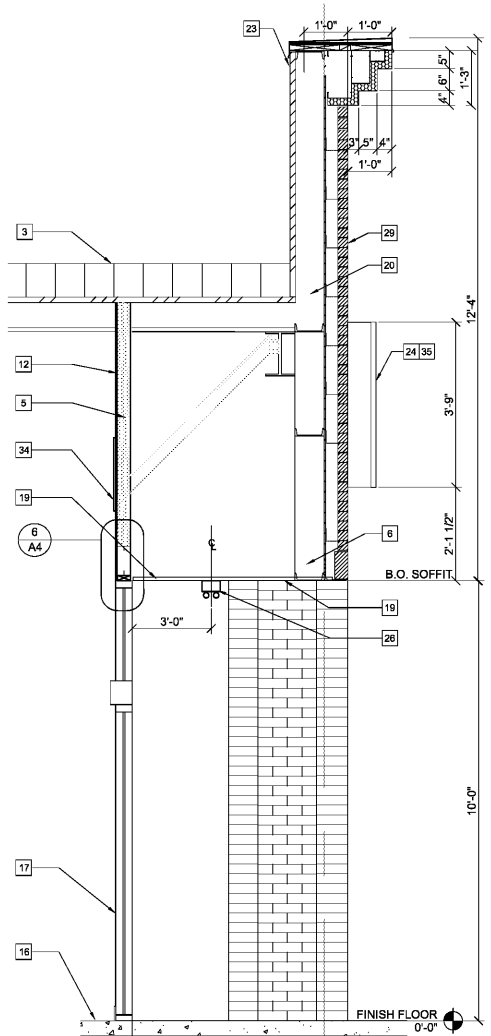
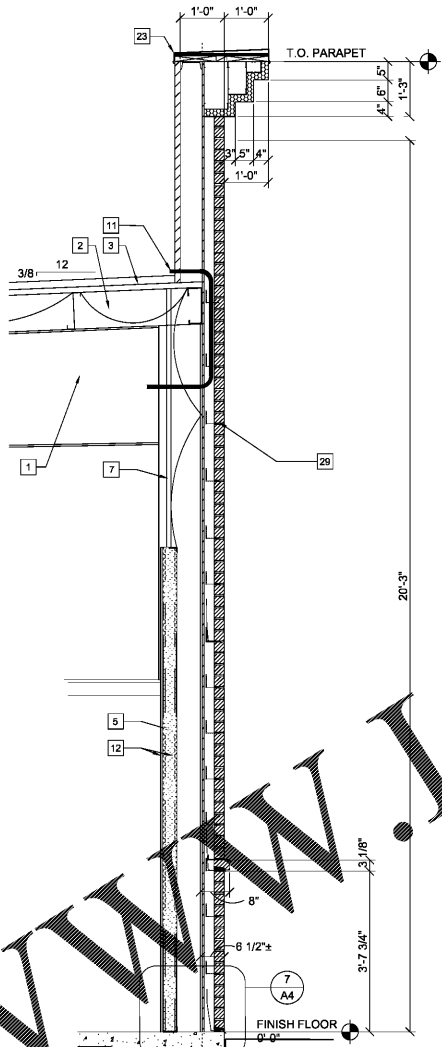


1 WALL SECTION  
1/2" = 1'-0"

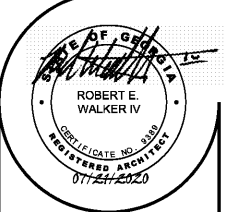


2 WALL SECTION  
1/2" = 1'-0"



3 WALL SECTION  
1/2" = 1'-0"

SECTION KEYED NOTES	
1	PRE-ENGINEERED METAL BUILDING SYSTEM BY BUILDING MANUFACTURER.
2	MIN. R-19 BATT INSULATION IN TWO LAYERS WITH R-5 THERMAL BLOCKS AT EACH PURLIN. (BY PEMB) - INSULATION SYSTEM TO LEAVE BOTTOM OF PURLINS EXPOSED FOR ATTACHMENTS - "SAG AND BAG" PREFERRED, "LONG TABBANDED FILLED CAVITY" ACCEPTABLE. STANDING SEAM METAL ROOF, GALVALUME FINISH (BY PEMB).
3	6" METAL STUD INFILL FRAMING FOR TOWER WALLS. PEMB TO PROVIDE MAIN STRUCTURE.
4	MINIMUM R-13 VINYL FACED BATT INSULATION (BY PEMB).
5	METAL BUILDING GIRT (BY PEMB).
6	VERTICAL METAL LINER PANELS, 28 GA.
7	1/2" MINIMUM GYPSUM BOARD OVER LINER PANELS. METAL LINER PANELS TO DECK ABOVE; T.O. GYPSUM BOARD 10'-0" AFF. PAINTED. REFER TO INTERIOR SALES FLOOR FINISHES.
8	PRE-FINISHED GUTTER & DOWNSPOUT.
9	PROVIDE METAL GUTTERS - SEAL & CAULK TO RODENT PROOF BUILDING.
10	LOCATION OF 1 1/2" CONDUIT WITH PULLSTRIP (ABOVE OFFICE) FOR SATELLITE LINES. PROVIDE WEATHERTIGHT SEAL AT HORIZONTAL PENETRATION. CONTRACTOR RESPONSIBLE FOR INSTALLATION OF CONDUIT.
11	MINIMUM GYPSUM BOARD ON 3 5/8" MTL STUDS, HEIGHT AS NOTED.
12	ADA COMPLIANT DRINKING FOUNTAIN, REFER TO PLUMBING.
13	EXTERIOR SHEATHING WITH VAPOR BARRIER.
14	METAL BUILDING COLUMNS SHALL BE STRAIGHT.
15	REINFORCED CONCRETE SLAB ON VINYL VAPOR BARRIER.
16	ALUMINUM BI-PART DOOR AND STOREFRONT GLAZING SYSTEM, COLOR BRONZE.
17	UNDISTURBED EARTH AND COMPACTED SUB GRADE.
18	SOFFIT BEYOND (BY PEMB).
19	PRE-FINISHED METAL WALL PANELS (BY PEMB), PROVIDE TAMPER-RESISTANT FASTENERS 8'-0" AFF AND BELOW.
20	GRANULAR FILL.
21	REINFORCED CONCRETE FOOTING. (REFER TO NOTES ON S2)
22	PRE-FINISHED METAL COPING.
23	STOREFRONT SIGN (BY DOLLAR GENERAL). REFER TO ELEVATIONS & STRUCTURAL NOTES FOR REQUIRED BLOCKING.
24	FINISH GRADE (NO SIDEWALKS); EXTERIOR WALLS SHALL BE A MINIMUM OF 6" BELOW FINISHED FLOOR.
25	LIGHTING, REFER TO ELECTRICAL DRAWINGS.
26	WHERE DOWNSPOUTS DISCHARGE ONTO GRADE (NO SIDEWALKS), MINIMUM 5'-0" LONG, 4" PERFORATED LANDSCAPE PIPE STRAPPED TO A 12"x24" CONCRETE SPLASH BLOCK SHALL BE INSTALLED TO PREVENT EROSION AROUND STRUCTURE.
27	INTERIOR WALL - PAINTED - SEE ROOM SCHEDULE FOR MORE INFORMATION.
28	BRICK VENEER - SEE SHEET A3 FOR TYPE & LOCATION.
29	PRE-FINISHED METAL WALL PANELS, REVERSE-RIB PROFILE.
30	STEEL PIPE COLUMN (BY PEMB) WITH RECESSED BASEPLATE, WRAP WITH CARPET UP TO 48" AFF.
31	1"x4" LIGHT FIXTURES HUNG WITH AIRCRAFT CABLE, ADD UNISTRUT TO PURLINS AS REQUIRED FOR HANGING.
32	20"x30" MINIMUM ACCESS PANEL FOR SIGNAGE JUNCTION BOX, COORDINATE LOCATION WITH ELECTRICAL DRAWINGS AND SIGNAGE VENDOR.
33	BLOCKING FOR BUILDING SIGNAGE COORDINATE WITH SIGN VENDOR.
34	CABLE TRAY - SEE A09.
35	6" METAL STUD TOWER ROOF FRAMING.
36	2" FRT PLYWOOD DECKING FRAMED BETWEEN 8" METAL STUD RIDGE JOISTS.
37	2" FIRE RETARDANT TREATED (FRT) PLYWOOD DECKING.
38	60 MIL MEMBRANE ROOFING UNDER STANDING SEAM CRICKET ROOFING.
39	PEMB TO PROVIDE ADDITIONAL PURLINS FOR CRICKET PEAK AND EDGES.
40	NICHHA PANELS TO MATCH MAIN BRICK COLOR.
41	PRE-FINISHED METAL FLASHING TO MATCH PEMB METAL ROOF - LAP OVER CLOSEST STANDING SEAM AND SEAL BLOCKING AS REQUIRED.
42	PRE-FINISHED BREAK METAL SOFFIT/FASCIA TO MATCH GUTTERS/ROOF.
43	STEEL BEAM BY PEMB.
44	4X4 TUBE STEEL COLUMN AT ALL 4 CORNERS OF TOWER.

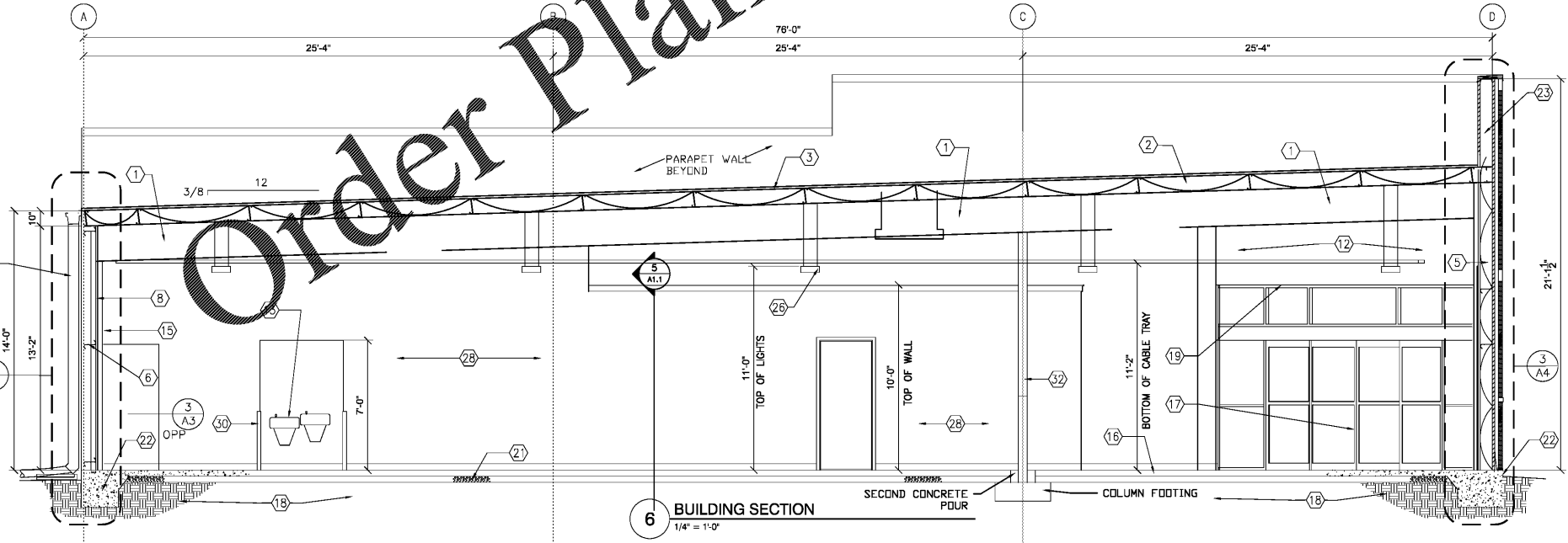


**Robert E. Walker, IV**  
Architect

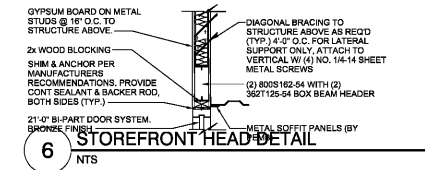
2229 FIRST AVE. SOUTH  
SUITE 110  
BIRMINGHAM, Alabama  
35233  
T-205.254.3212  
F-205.254.3269

WWW.LDILine.com

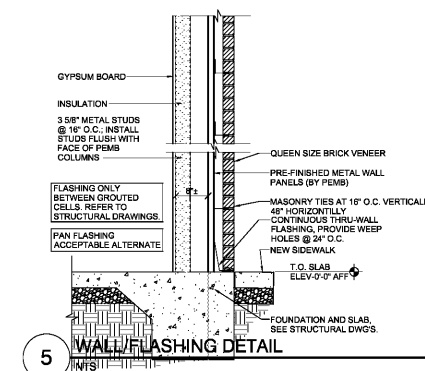
Order Plans @



6 BUILDING SECTION  
1/4" = 1'-0"



6 STOREFRONT HEAD DETAIL



5 WALL FLASHING DETAIL



**DOLLAR GENERAL BUILDING**  
Prototype 9100 SF E  
Store # 22323

DG Villa Rica  
101 Prospector Drive  
Villa Rica, GA

**CONSTRUCTION DOCUMENTS**

PROJECT NO.: 8095.89  
ISSUED: 07/21/2020

**WALL SECTIONS BUILDING SECTION**

**A4**