

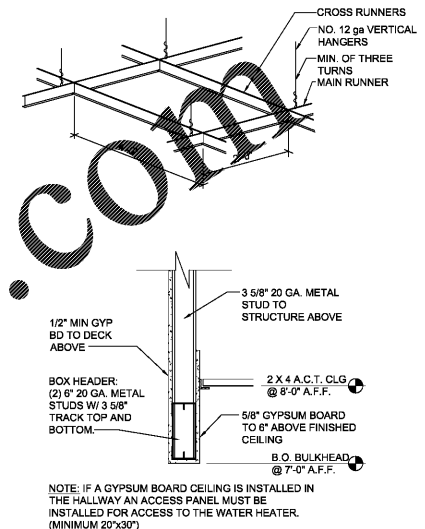
1 REFLECTED CEILING PLAN  
1/8" = 1'-0"

LEGEND	
LIGHT FIXTURE TYPE A/D	WALL PACK J
LIGHT FIXTURE TYPE B/C/F	EXHAUST FAN
NIGHT LIGHT CIRCUIT	TRANSFER GRILLE
EMERGENCY LIGHT	EXT. LED LIGHT AND EXT ARM
EMERGENCY LIGHT & EXIT COMBO	

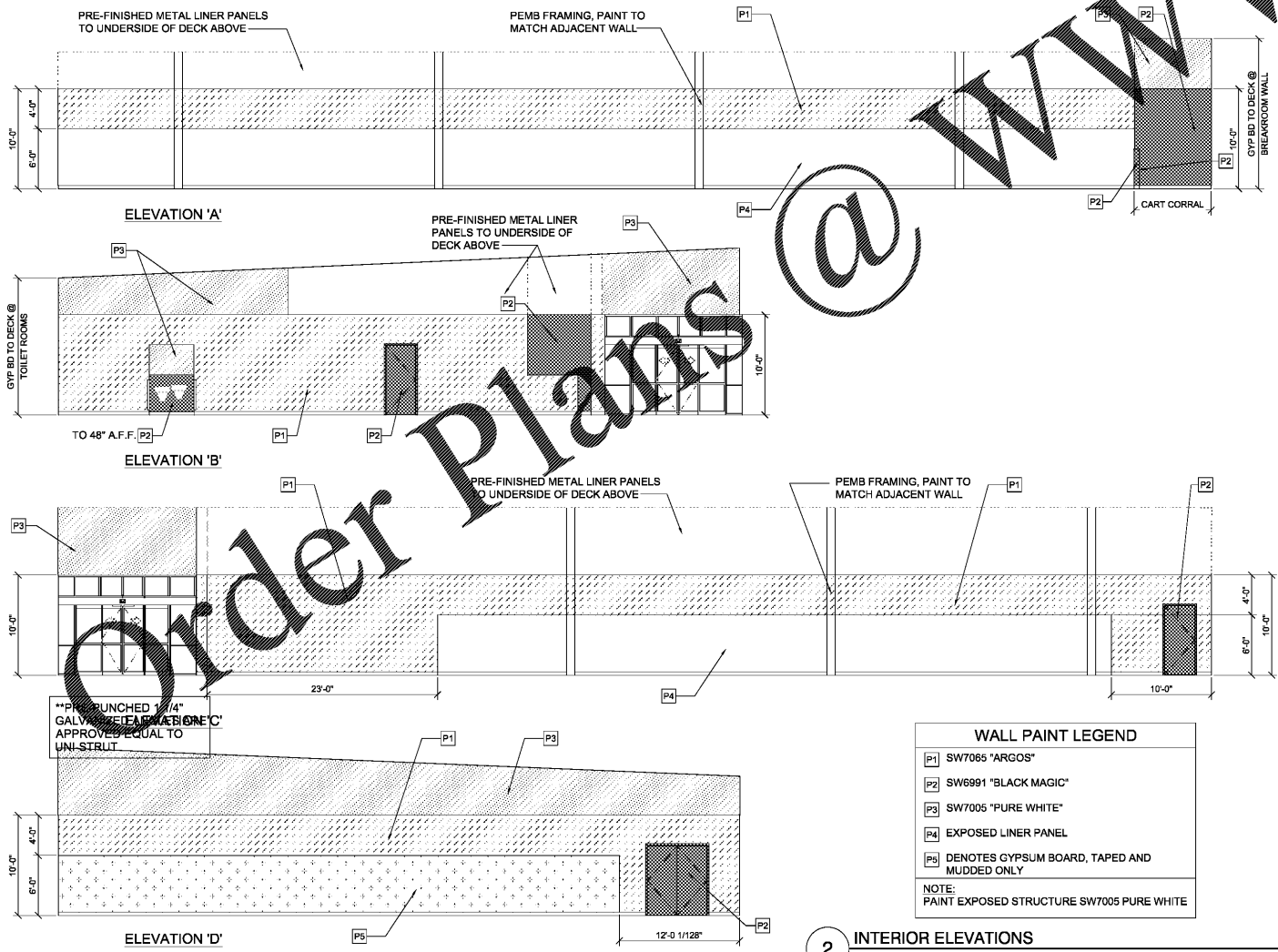
\*\* REFER TO THE ELECTRICAL DRAWINGS FOR LIGHT DESIGNATIONS AND OTHER ADDITIONAL INFORMATION

REFLECTED CEILING PLAN NOTES

- ALL LIGHTS TO BE MOUNTED SUCH THAT THE TOP OF THE FIXTURES ARE AT 11'-0" A.F.F. REFER TO ELECTRICAL DRAWINGS FOR ADDITIONAL INFORMATION.
- CABLE TRAY TO BE MOUNTED SUCH THAT BOTTOM OF TRAY IS AT 11'-6" A.F.F.
- CABLE TRAY SYSTEM TO BE INSTALLED USING FULL LENGTHS WITH MINIMAL CUTTING. SECTION AREAS WHERE CUTTING MAY BE REQUIRED ARE INDICATED ON THE PLAN.
- GENERAL CONTRACTOR SHALL PROVIDE AND INSTALL CABLE TRAY AND ALL CONDUIT WITH PULL STRINGS AS NOTED.



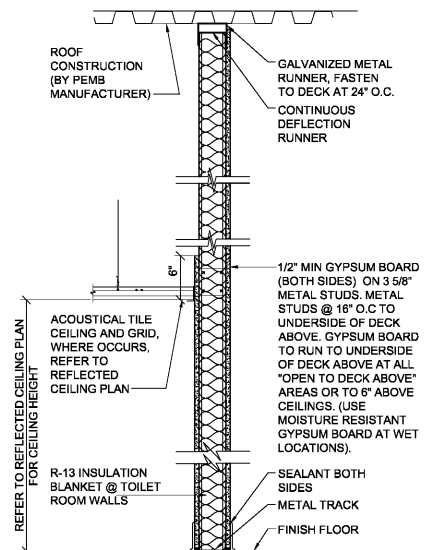
3 CEILING DETAILS  
N.T.S.



WALL PAINT LEGEND	
P1	SW7065 "ARGOS"
P2	SW6991 "BLACK MAGIC"
P3	SW7005 "PURE WHITE"
P4	EXPOSED LINER PANEL
P5	DENOTES GYPSUM BOARD, TAPED AND MUDDED ONLY

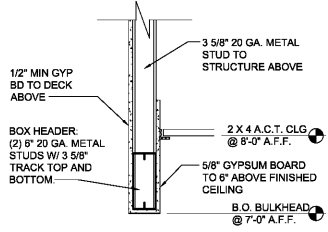
NOTE:  
PAINT EXPOSED STRUCTURE SW7005 PURE WHITE

2 INTERIOR ELEVATIONS  
1/4" = 1'-0"

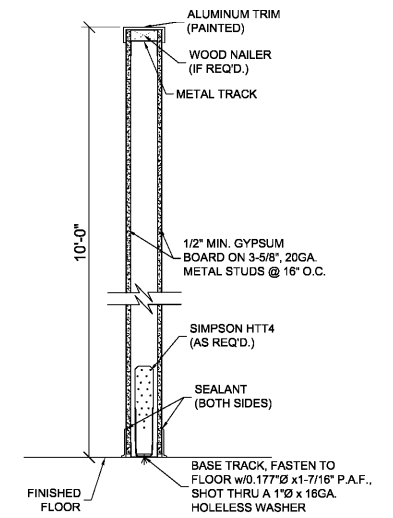


- NOTES:
- DO NOT FASTEN GYPSUM BOARD WITHIN 2" OF BOTTOM OF SLIP TRACK.
  - IN PLACE OF CONTINUOUS SLIP TRACK - METAL STUD CONTRACTOR MAY USE "VERTICLIP" BRAND SLIP CONNECTION TO STRUCTURE.
  - SCREW ANCHORS SHALL NOT EXTEND BEYOND TOP OF DECK ELEVATION.

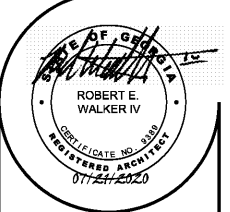
4 FULL HEIGHT WALL DETAIL  
1" = 1'-0"



3 CEILING DETAILS  
N.T.S.



5 PARTIAL HEIGHT WALL DETAIL  
1" = 1'-0"



Robert E. Walker, IV  
Architect

2229 FIRST AVE. SOUTH  
SUITE 110  
BIRMINGHAM, Alabama  
35233  
T-205.254.3212  
F-205.254.3269



DOLLAR GENERAL  
BUILDING  
Prototype 9100 SF E  
Store # 22323

DG Villa Rica  
101 Prospector Drive  
Villa Rica, GA

CONSTRUCTION  
DOCUMENTS

PROJECT NO.: 8095.89  
ISSUED: 07/21/2020

REFLECTED  
CEILING PLAN  
INTERIOR ELVES

A1.1