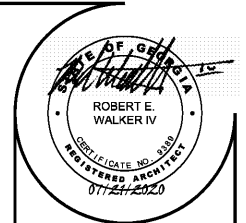
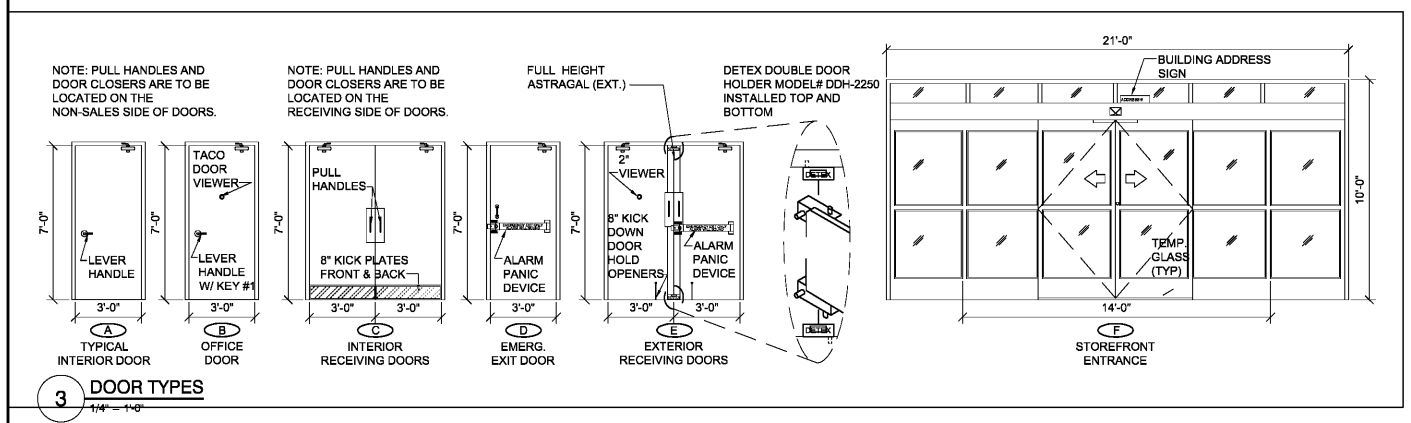


DOOR SCHEDULE										
NO.	Type	SIZE			DETAILS		DOOR HARDWARE	REMARKS		
		W	H	T	HEAD	JAMB				
100	A	3'-0"	7'-0"	1 3/4"	6/A6	5/A6	(1) STANLEY PASSAGE LOCKSET QCL230-E-626-S4 - NO KEY REQUIRED, (1) STANLEY DOOR CLOSER QDC311-689, (1) IVES WALL STOP #402-1/2B-26D	SOLID CORE WOOD DOOR OR HOLLOW CORE METAL DOOR PAINTED SW6991, BLACK MAGIC (SEMI-GLOSS).		
101	B	3'-0"	7'-0"	1 3/4"	6/A6	5/A6	(1) STANLEY STOREROOM LOCKSET QCL270-E-626-S4-SC-KD - KEY #1, (1) TACO DOOR VIEWER #T43310PC.	SOLID WOOD DOOR OR HOLLOW CORE METAL DOOR PAINTED SW6991, BLACK MAGIC (SEMI-GLOSS).		
102	D	3'-0"	7'-0"	1 3/4"	3/A6	2/A6	(1) VON DUPRIN GUARD-X EXIT ALARM LOCK #2670-28, (1) STANLEY DOOR CLOSER QDC311-689, (1) DOOR PULL BN US28, (1) DOOR SWEEP, WEATHERSTRIPPING, (1) 7015SC8-26D-RIM CYLINDER	HOLLOW CORE METAL DOOR. PAINT EXTERIOR SW7041, VAN DYKE BROWN (SEMI-GLOSS), PAINT INTERIOR SW6991, BLACK MAGIC (SEMI-GLOSS).		
103A	C	6'-0"	7'-0"	1 3/4"	6/A6	5/A6	(2) BURNS PULL PLATES #5410-32D-26D-GRIP, (2) STANLEY DOOR CLOSERS QDC311-689, (2) BURNS PUSH PLATES #54-US32D, (4) IVES KICK PLATES #8400-S32D-8X34	FIRE RATED DOORS, SOLID CORE WOOD DOOR OR HOLLOW METAL DOOR PAINTED SW6991, BLACK MAGIC (SEMI-GLOSS).		
103B	E	6'-0"	7'-0"	1 3/4"	3/A6	2/A6	(1) VON DUPRIN GUARD-X EXIT ALARM LOCK #2670-28, (1) VON DUPRIN GUARD-X DOUBLE DOOR STRIKE #2609, (1) DETEX DOUBLE DOOR HOLDER #DDH-2250 TOP & BOTTOM, (2) STANLEY DOOR CLOSERS QDC311-689	HOLLOW CORE METAL DOOR. PAINT EXTERIOR SW7041, VAN DYKE BROWN (SEMI-GLOSS), PAINT INTERIOR SW6991, BLACK MAGIC (SEMI-GLOSS).		
104	A	3'-0"	7'-0"	1 3/4"	6/A6	5/A6	(1) STANLEY STOREROOM LOCKSET QCL270-E-626-S4-SC-KD - KEY #2, (1) STANLEY DOOR CLOSER QDC311-689, (1) IVES WALL STOP #402-1/2B-26D.	SOLID WOOD DOOR OR HOLLOW CORE METAL DOOR PAINTED SW6991, BLACK MAGIC (SEMI-GLOSS).		
105	A	3'-0"	7'-0"	1 3/4"	6/A6	5/A6	(1) STANLEY STOREROOM LOCKSET QCL270-E-626-S4-SC-KD - KEY #2, (1) STANLEY DOOR CLOSER QDC311-689, (1) IVES WALL STOP #402-1/2B-26D.	SOLID WOOD DOOR OR HOLLOW CORE METAL DOOR PAINTED SW6991, BLACK MAGIC (SEMI-GLOSS).		
106	F	6'-0"	7'-0"				BY DOOR MANUFACTURER TO BE RE-KEYED BY DOLLAR GENERAL AREA MANAGER WITH (1) ILCOR RIM CYLINDER #7015SC8-26D.	21'-0" BI-PART WITH TRANSOM AND GLASS. BRONZE FINISH. REFER TO COVER SHEET FOR VENDOR INFORMATION.		

ROOM SCHEDULE															
NO	ROOM NAME	FLOOR		BASE		A WALL		B WALL		C WALL		D WALL		CEILING	REMARKS
		MATERIAL	FINISH	MATERIAL	FINISH	MATERIAL	FINISH	MATERIAL	FINISH	MATERIAL	FINISH	MATERIAL	FINISH		
100	BREAK ROOM	SEALED CONCRETE	CONCRETE WITH SEALER	4" RUBBER / VINYL BASE	BLACK	GYP BOARD ON MTL STUDS TO UNDER-SIDE OF DECK ABOVE	SHERWIN WILLIAMS SW7005-PURE WHITE, PRO-MAR LATEX SEMI-GLOSS.	GYP BOARD TO 10'-0" A.F.F.	SHERWIN WILLIAMS SW7005-PURE WHITE, PRO-MAR LATEX SEMI-GLOSS.	GYP BOARD TO 10'-0" A.F.F.	SHERWIN WILLIAMS SW7005-PURE WHITE, PRO-MAR LATEX SEMI-GLOSS.	GYP BOARD TO 10'-0" A.F.F.	SHERWIN WILLIAMS SW7005-PURE WHITE, PRO-MAR LATEX SEMI-GLOSS.	EXPOSED TO STRUCTURE ABOVE	N/A
101	OFFICE	SEALED CONCRETE	CONCRETE WITH SEALER	4" RUBBER / VINYL BASE	BLACK	GYP BOARD TO 10'-0" A.F.F.	SHERWIN WILLIAMS SW7005-PURE WHITE, PRO-MAR LATEX SEMI-GLOSS.	GYP BOARD TO 10'-0" A.F.F.	SHERWIN WILLIAMS SW7005-PURE WHITE, PRO-MAR LATEX SEMI-GLOSS.	GYP BOARD TO 10'-0" A.F.F.	SHERWIN WILLIAMS SW7005-PURE WHITE, PRO-MAR LATEX SEMI-GLOSS.	GYP BOARD TO 10'-0" A.F.F.	SHERWIN WILLIAMS SW7005-PURE WHITE, PRO-MAR LATEX SEMI-GLOSS.	EXPOSED TO STRUCTURE ABOVE	N/A
102	SALES AREA	POLISHED CONCRETE (STEPS 1-8)	POLISHED CONCRETE WITH SEALER	4" RUBBER / VINYL BASE	BLACK	GYP BOARD TO 10'-0" A.F.F. ON WHITE METAL LINER PANELS	SHERWIN WILLIAMS SW7005-PURE WHITE, PRO-MAR LATEX SEMI-GLOSS.	GYP BOARD TO 10'-0" A.F.F.	SHERWIN WILLIAMS SW7005-PURE WHITE, PRO-MAR LATEX SEMI-GLOSS.	GYP BOARD TO 10'-0" A.F.F.	SHERWIN WILLIAMS SW7005-PURE WHITE, PRO-MAR LATEX SEMI-GLOSS.	GYP BOARD TO 10'-0" A.F.F.	SHERWIN WILLIAMS SW7005-PURE WHITE, PRO-MAR LATEX SEMI-GLOSS.	EXPOSED TO STRUCTURE ABOVE	N/A
103	RECEIVING AREA	SEALED CONCRETE	CONCRETE WITH SEALER	N/A	N/A	METAL LINER PANEL TO 9'-0" A.F.F.	LIGHTSTONE	GYP BOARD TO 10'-0" A.F.F.	SHERWIN WILLIAMS SW7005-PURE WHITE, PRO-MAR LATEX SEMI-GLOSS.	GYP BOARD TO 10'-0" A.F.F.	SHERWIN WILLIAMS SW7005-PURE WHITE, PRO-MAR LATEX SEMI-GLOSS.	GYP BOARD TO 10'-0" A.F.F.	SHERWIN WILLIAMS SW7005-PURE WHITE, PRO-MAR LATEX SEMI-GLOSS.	EXPOSED TO STRUCTURE ABOVE	N/A
104	MENS	SEALED CONCRETE	SHERWIN WILLIAMS ACRYLIC SILICONE SILK CHOCOLATE HC117	4" RUBBER / VINYL BASE	BLACK	GYP BOARD TO 9'-0" A.F.F.	8'-0" HIGH FIBERGLASS REINFORCED PANEL - 'WHITE'	GYP BOARD TO 9'-0" A.F.F.	8'-0" HIGH FIBERGLASS REINFORCED PANEL - 'WHITE'	GYP BOARD TO 9'-0" A.F.F.	8'-0" HIGH FIBERGLASS REINFORCED PANEL - 'WHITE'	GYP BOARD TO 9'-0" A.F.F.	8'-0" HIGH FIBERGLASS REINFORCED PANEL - 'WHITE'	GYP BOARD TO 9'-0" A.F.F.	WHITE
105	WOMENS	SEALED CONCRETE	SHERWIN WILLIAMS ACRYLIC SILICONE SILK CHOCOLATE HC117	4" RUBBER / VINYL BASE	BLACK	GYP BOARD TO 9'-0" A.F.F.	8'-0" HIGH FIBERGLASS REINFORCED PANEL - 'WHITE'	GYP BOARD TO 9'-0" A.F.F.	8'-0" HIGH FIBERGLASS REINFORCED PANEL - 'WHITE'	GYP BOARD TO 9'-0" A.F.F.	8'-0" HIGH FIBERGLASS REINFORCED PANEL - 'WHITE'	GYP BOARD TO 9'-0" A.F.F.	8'-0" HIGH FIBERGLASS REINFORCED PANEL - 'WHITE'	GYP BOARD TO 9'-0" A.F.F.	WHITE
106	VESTIBULE (WHEN REQUIRED)														
107	HALLWAY	POLISHED CONCRETE (STEPS 1-8)	POLISHED CONCRETE WITH SEALER	4" RUBBER / VINYL BASE	BLACK	GYP BOARD TO 9'-0" A.F.F.	SHERWIN WILLIAMS SW7005-PURE WHITE, PRO-MAR LATEX SEMI-GLOSS ABOVE 3'-0" AFF.	GYP BOARD TO 9'-0" AFF	SHERWIN WILLIAMS SW7005-PURE WHITE, PRO-MAR LATEX SEMI-GLOSS ABOVE 3'-0" AFF.	GYP BOARD TO 9'-0" AFF	SHERWIN WILLIAMS SW7005-PURE WHITE, PRO-MAR LATEX SEMI-GLOSS ABOVE 3'-0" AFF.	GYP BOARD TO 9'-0" AFF	SHERWIN WILLIAMS SW7005-PURE WHITE, PRO-MAR LATEX SEMI-GLOSS ABOVE 3'-0" AFF.	ACT CEILING @ 8'-0" A.F.F.	WHITE

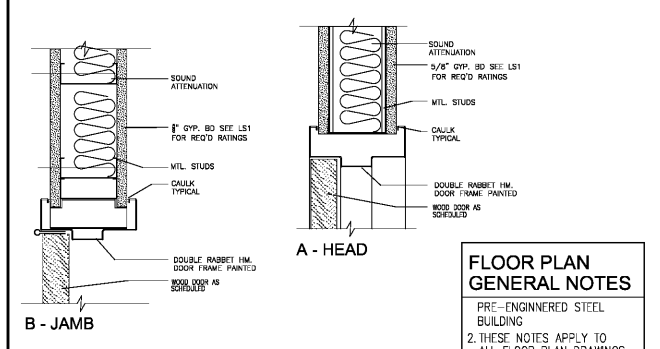


Robert E. Walker, IV
Architect
2229 FIRST AVE. SOUTH
SUITE 110
BIRMINGHAM, Alabama
35233
T-205.254.3212
F-205.254.3269



GENERAL NOTES

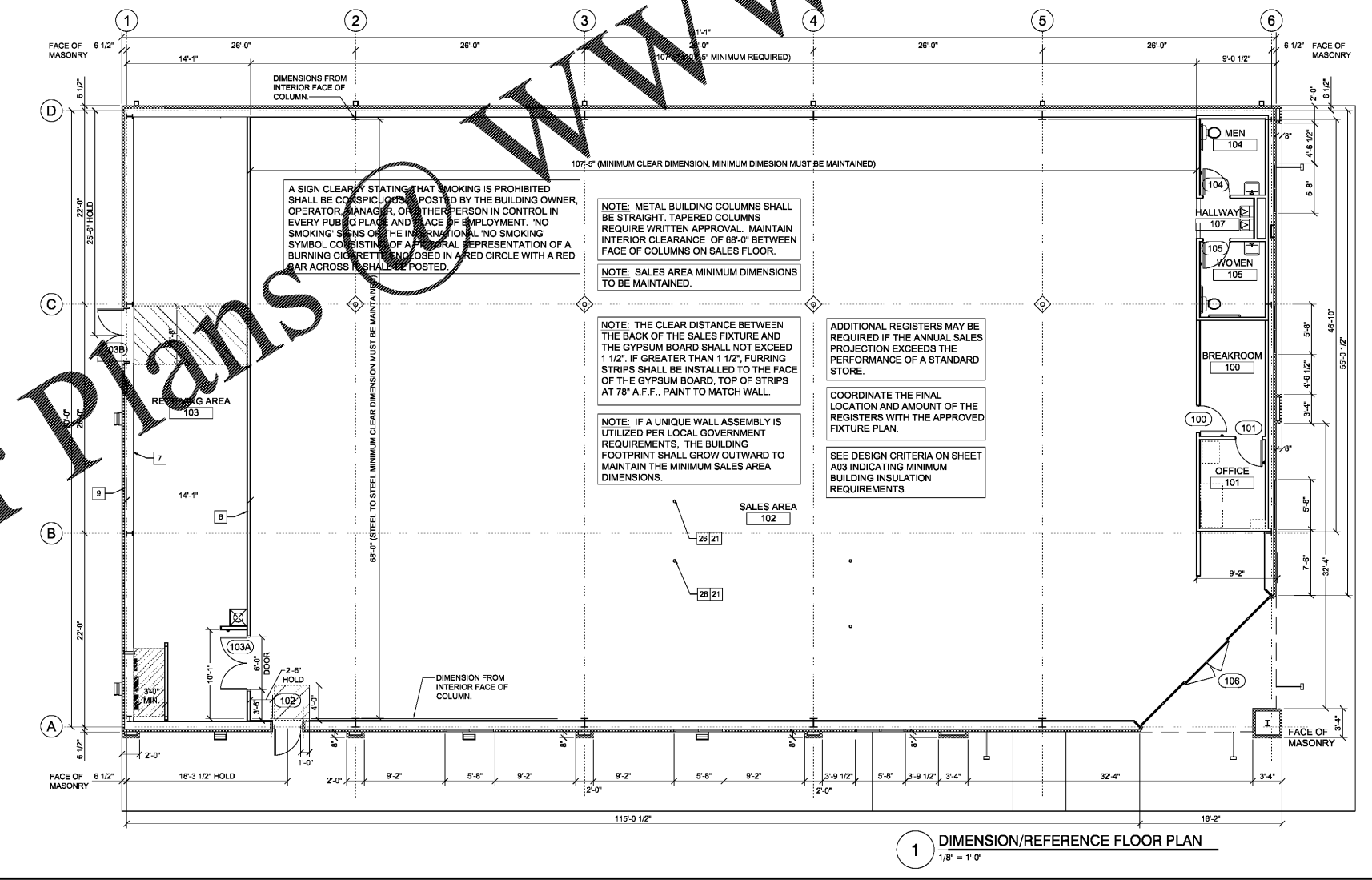
- BUILDING MUST COMPLY WITH ALL BUILDING (FEDERAL, STATE, AND LOCAL), FIRE, ADA, AND HEALTH DEPARTMENT CODES.
- WALLS: FINISHED GYPSUM BOARD WITH ALL JOINTS TAPED, MUDDERED, SANDED AND PAINTED.
- PROVIDE DOUBLE STUDS AND BLOCKING TO SUPPORT EQUIPMENT AND/OR MISCELLANEOUS ITEMS WHEN INSTALLED. I.E. TYPICAL CASEWORK, TOILET PAPER HOLDERS, GRAB BARS, ETC.
- CAULK AND SEAL EXTERIOR JOINT BETWEEN METAL PANELS AND CONCRETE SLAB, AND ALL LIKE MATERIALS.
- TRIM - DOORS, DOOR FRAMES, WINDOW FRAMES, COLUMNS, PAINTED WITH SAME AS ABOVE.
- FLOORS - SEE FINISH SCHEDULE
- CONTRACTOR SHALL VERIFY ALL DIMENSIONS AND COORDINATE ALL TRADES.
- CONTRACTOR SHALL VERIFY ALL EQUIPMENT LOCATIONS AND DIMENSIONS OF EQUIPMENT. ANY EQUIPMENT FURNISHED BY THE OWNER OR TENANT SHALL BE RECEIVED, STORED, AND INSTALLED BY THE CONTRACTOR. CONTRACTOR SHALL COORDINATE WITH OWNER FOR INSTALLATION.
- IF DIMENSIONS ARE IN QUESTION - THE CONTRACTOR SHALL BE RESPONSIBLE FOR OBTAINING CLARIFICATION FROM DOLLAR GENERAL BEFORE COMMENCING WITH CONSTRUCTION.
- MAINTAIN CLEAN WORK SITE ON A DAILY BASIS.



2 DOOR FRAME DETAILS

DOOR & FRAME SCHEDULE NOTES:

- THE CONTRACTOR SHALL CAREFULLY STUDY AND COMPARE THE CONTRACT DOCUMENTS AND THIS SCHEDULE AND SHALL AT ONCE REPORT TO THE ARCHITECT ANY ERROR, INCONSISTENCY, OR OMISSION THAT HE MAY DISCOVER.
- ALL FRAMES SHALL BE CAULKED CONTINUOUSLY TO THE WALL.
- WHEREVER THERE IS A CRACK LEFT BETWEEN THE BOTTOM OF THE DOOR FRAME AND THE FINISH FLOOR THE CONTRACTOR SHALL PROVIDE A FINISH LINE CAULK TO SEAL THIS CRACK EXCEPT WHERE CARPET HIDES THE CRACK.
- DOORS SCHEDULED TO HAVE A FIRE RATING LABEL SHALL HAVE A METAL LABEL PERMANENTLY ATTACHED TO BOTH THE DOOR AND TO THE DOOR FRAME. (A 'SELF' IS NOT ACCEPTABLE. AN EMBOSSED LABEL IN THE FRAME IS NOT ACCEPTABLE.)
- CONTRACTOR SHALL PROVIDE STANDARD COMMERCIAL DUTY LEVER HARDWARE (ADA COMPLIANT) ON ALL DOORS.
- CONTRACTOR SHALL PROVIDE ALL LISTED HARDWARE REQUIRED ON ALL FIRE RATED DOORS.
- ALL THRESHOLDS SHALL CONFORM TO THE REQUIREMENTS OF THE MOST CURRENT EDITION OF THE ANSI A117.1 HANDBOOK CODE, THE AMERICANS WITH DISABILITIES ACT.
- THE CONTRACTOR SHALL VERIFY THAT CLOSERS AND OTHER HARDWARE WILL ALLOW THE DOOR TO OPEN 180 DEGREES WHEN SUCH DOORS SWINGS INDICATED ON THE FLOOR PLAN AND IN THIS SCHEDULE.
- STOREFRONT DOORS: TWO DOUBLE OR SINGLE ACTION 3'x7' ALUMINUM FRAME, FULL GLASS DOORS CENTERED TO SALES AREA SPACE. MATCHING ALUMINUM "BUMPER" ON BOTH SIDES OF DOORS AT 23" AFF.
- DOORS: ALL EXTERIOR DOORS HAVE WEATHER STRIP AND A SNUG SEAL. ROUND DOOR, OFFICE DOOR (KEY #1) REQUIRE KEYED H/C PRIVATE LOCK AND DOOR PEEP VIEWER. REST ROOM DOORS (KEY #2) REQUIRE KEYED CCESS WITH PUSH BUTTON INTERIOR FIRE EXITS ARE KEYPED AND REQUIRE BATTERY ALARMED PANIC HARDWARE. ALL EXTERIOR DOORS WILL HAVE CYLINDER REPLACED BY DOLLAR GENERAL AREA MANAGER WITH INSTA-KEY SYSTEM.
- PROVIDE ALUMINUM THRESHOLD AT ALL EXTERIOR DOORS.
- ALL WOOD DOORS SHALL BE PAINT GRAD, CLOSE GRAINED WOOD, FINISH WITH MIN. TWO COATS OF APPROVED PAINT AND ONE COAT OF CLEAR SEALER.
- DOOR CLOSERS:
THE SWEEP PERIOD OF EACH CLOSER SHALL BE 3 SECONDS FROM AN OPEN POSITION OF 70 DEGREES TO A POINT 3 INCHES FROM THE LATCH (MEASURED FROM THE LEADING EDGE OF THE DOOR).
- DOOR OPENING FORCE:
THE MAXIMUM FORCE FOR PUSHING OR PULLING OPEN A DOOR SHALL BE AS FOLLOWS:
A) FIRE DOORS - PER LOCAL BUILDING CODE
B) EXTERIOR HINGED DOORS - (RESERVED)
C) INTERIOR HINGED DOORS - 5 LBF
THESE FORCES DO NOT APPLY TO THE FORCE REQUIRED TO RETRACT LATCH BOLTS OR DISINTEGRATE OTHER DEVICES THAT MAY HOLD THE DOOR IN A CLOSED POSITION.
- BUILD ALL INTERIOR PARTITIONS UNLESS NOTED OTHERWISE. WITH 3/8" 25 GAUGE METAL STUDS AT 16" O.C. WITH 5/8" DRYWALL.
- ALL METAL STUDS SHALL BE 3/8" 25 GAUGE PER MANUFACTURERS LIMITING HEIGHT GUIDELINES.
- PROVIDE EXHAUST FAN FOR TOILETS. W/ 2' O.M PER SQ. FT. OF FLOOR AREA.
- ACOUSTIC CEILING TILE.



- FLOOR PLAN KEYED NOTES**
- RECEIVING DOOR BUZZER - TORK MDL #TA725 OR EQUAL
 - DOOR SCOPE. REFER TO DOOR SCHEDULE.
 - WEATHER STRIP & LOW PROFILE THRESHOLD. SEE DOOR SCHEDULE.
 - STRIPE FLOOR FOR DESIGNATED EGRESS PATH (PAINT YELLOW) AND 3'-0" DESIGNATED EMS PANEL CLEARANCE (PAINT RED).
 - STRIPE FLOOR FOR DESIGNATED ADA EGRESS PATH (PAINT YELLOW).
 - PROVIDE AND INSTALL A TEN GALLON WATER HEATER (OR LARGER IF REQUIRED BY CODE) ABOVE THE MOP SINK.
 - 3/8" METAL STUD WITH 1/2" MINIMUM GYPSUM BOARD (BOTH SIDES). REFER TO NOTED WALL SECTION. REFER TO ROOM FINISH SCHEDULE FOR GYPSUM BOARD HEIGHT AT ANY PARTICULAR WALL.
 - METAL LINER PANELS TO UNDERSIDE OF ROOF DECK. (BY PRE-ENGINEERED BUILDING MANUFACTURER).
 - NOT USED
 - METAL BUILDING PANELS (BY PEMB) PROVIDE TAMPER-RESISTANT FASTENERS FOR BOTTOM 8'-0".
 - CONCRETE SLAB WITH 6X6XW1.4 WELDED WIRE MESH OVER POLYETHYLENE VAPOR BARRIER (MIN. 10 MM THICK) OVER CRUSHED STONE BASE. TYPICAL. PROVIDE CONTROL JOINTS AS SHOWN ON S03.
 - METAL BUILDING FRAME. REFER TO NOTED WALL SECTION FOR ADDITIONAL INFORMATION.
 - 1/2" GYPSUM BOARD (TO 10'-0" A.F.F.) OVER METAL LINER PANELS AND INSULATION WITH VAPOR BARRIER.
 - QUEEN SIZE BRICK VENEER - GENERAL SHALE: LA COSTA 6040006810 OR EQUAL (SEE A3)
 - SLOPE CONCRETE 1/8" PER FOOT AWAY FROM BUILDING.
 - BROOM FINISH CONCRETE SIDEWALK. TYPICAL.
 - BRONZE STOREFRONT SYSTEM. REFER TO NOTED WALL SECTION FOR ADDITIONAL INFORMATION. CONTINUE GYPSUM BOARD ABOVE STOREFRONT TO DECK.
 - LINE OF SOFFIT OR CANOPY ABOVE.
 - A.D.A. COMPLIANT ACCESSIBLE RAMP WITH YELLOW PAINTED SIDES TO ACCESSIBLE PARKING STALLS.
 - MC CUE CART AND BUMPER KICKERS. TOP INSTALLED @ 3'-8" A.F.F. ORDER TRIM KIT FOR THIS PROTOTYPE.
 - WALL HYDRANT. REFER TO PLUMBING DRAWINGS FOR ADDITIONAL INFORMATION.
 - REFRIGERATION BY DOLLAR GENERAL.
 - ROUND PIPE STEEL COLUMN WITH RECESSED BASE PLATE. PAINT SW7005 PURE WHITE. WRAP COLUMN WITH TIGHT LOOP CARPET (BLACK) FROM BASE TO 48" A.F.F.
 - POWER POLE. COORDINATE FINAL LOCATION WITH ELECTRICAL DRAWINGS AND FINAL DOLLAR GENERAL FIXTURE PLAN (F01).
 - CONTROL JOINTS ARE TO BE PLACED ALONG COLUMN LINES AND MID POINT BETWEEN COLUMN LINES. COORDINATE WITH STRUCTURAL DRAWINGS.
 - FLOOR AREA AT BASE OF COLUMNS. WITHIN THE CONST JOINTS, TO BE PAINTED BLACK MAGIC TINT.
 - ENDCAP COOLER/FREEZER TO BE HARDWIRED THROUGH WHITE SO CORD WITH DUPLEX AT END. GC TO LEAVE BOTTOM HANGING AT 80" A.F.F. (SEE ELECTRICAL). CORD ANCHORED TO PURLINS ABOVE. COORDINATE LOCATION WITH FINAL DOLLAR GENERAL FIXTURE PLAN.
 - KIOSK COOLER TO BE HARDWIRED THROUGH WHITE SO CORD WITH QUAD AT END. GC TO LEAVE BOTTOM HANGING AT 48" A.F.F. (SEE ELECTRICAL). CORD ANCHORED TO PURLINS ABOVE. COORDINATE LOCATION WITH FINAL DOLLAR GENERAL FIXTURE PLAN.
 - MC CUE RAILING IN FRONT OF ELECTRICAL PANELS. 8'-0" LONG WITH TOP TWO RAILINGS AND NO MIDDLE POST.
 - CART AREA. REFER TO 5 & 6/A06.

DOLLAR GENERAL BUILDING
Prototype 9100 SF E
Store # 22323

DG Villa Rica
101 Prospera Drive
Villa Rica, GA

CONSTRUCTION DOCUMENTS

PROJECT NO.: 8095.89
ISSUED: 07/21/2020

FLOOR PLAN DOOR SCHED. FINISH SCHED.

A1