

KEYNOTES

- EXIT SIGN WITH EMERGENCY LIGHTING ("BUGEYS") AND BATTERY BACKUP
- FE O FIRE EXTINGUISHER TYPE 2A-10BC

WALL LEGEND

WALL _____

MASONRY WALL _____

SQUARE FOOTAGE LEGEND

TOTAL SQUARE FOOTAGE	8,914 S.F.
OVERALL BUILDING DIMENSIONS	70'-0" X 130'-0"
SALES FLOOR DIMENSIONS	66'-0" X 104'-0"
SALES AREA	7,181 S.F.
STOCK ROOM AREA	1,088 S.F.
CLEAR OFFICE AREA	158 S.F.
REST RM BREAK RM & HALL AREA	161 S.F.
COVERED ENTRY	

NOTE: IF THE LOCATION OF ANY ITEM (INCLUDING DOORS) CHANGES, PLEASE CONSULT THE DOLLAR GENERAL CONSTRUCTION DEPARTMENT FOR COOLER RECEPTACLE LOCATION.

NOTE: ALL SHELVING AND FIXTURES TO BE PROVIDED BY DOLLAR GENERAL. THE ABOVE LAYOUT OF SHELVING AND FIXTURES IS FOR REFERENCE ONLY; THE CONTRACTOR TO PROVIDE AN RFI REQUESTING FINAL FIXTURE LAYOUT AND POWER LOCATION.

NOTE: At least one sales counter shall comply with ADAAG 7.3. Counter tops at least 36" high and be at least 30" wide. Provide required signage per ADAAG 7.3.1

1 LIFE SAFETY PLAN
1/8" = 1'-0"

CODE REVIEW DATA

APPLICABLE CODES

INTERNATIONAL BUILDING CODE, 2012 EDITION, WITH GEORGIA AMENDMENTS (2014) (2015)(2017)(2018)
 INTERNATIONAL FIRE CODE, 2012 EDITION, WITH GEORGIA AMENDMENTS (2014) (2015)
 INTERNATIONAL PLUMBING CODE, 2012 EDITION, WITH GEORGIA AMENDMENTS (2014) (2015)
 INTERNATIONAL MECHANICAL CODE, 2012 EDITION, WITH GEORGIA AMENDMENTS (2014) (2015)
 INTERNATIONAL FUEL GAS CODE, 2012 EDITION, WITH GEORGIA AMENDMENTS (2014) (2015)
 NATIONAL ELECTRICAL CODE, 2017 EDITION (NO GEORGIA AMENDMENTS)
 INTERNATIONAL ENERGY CONSERVATION CODE, 2009 EDITION, WITH GEORGIA SUPPLEMENTS AND AMENDMENTS (2011) (2012)
 NFPA 101 - LIFE SAFETY CODE
 THE CURRENT EDITION OF THE NFPA 72 FIRE ALARM CODES AND STANDARDS AS ADOPTED AND MODIFIED BY THE STATE FIRE MARSHAL.

BUILDING INFORMATION IBC Reference

OCCUPANCY:	Group M - Mercantile Non-Separated Use	309.1
CONSTRUCTION TYPE:	Type II-B	
FULLY SPRINKLED:	NO	
BUILDING HEIGHT:	17'-0"	
NUMBER OF STORIES:	ONE	

BUILDING AREA IBC Reference

OCCUPANCY	CONSTRUCTION TYPE	ALLOWABLE AREA	ACTUAL AREA (Gross SF)	TABLE 503
M	II-B	12,500 sf	9,014 sf	

FLOOR AREAS OCCUPANCY CALCULATIONS TABLE 1004.1.2

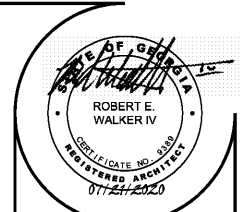
OCCUPANCY	AREA (GSF)	AREA/OCCUPANT (SF)	OCCUPANT LOAD
Non-Separated Use			
M	7,926 sf	30 Gross	265
RECEIVING AREA	1,088 sf	300 Gross	4
TOTAL	9,014 sf		269

EGRESS CAPACITY TABULATION TABLE 1005.1

OCCUPANCY	OCCUPANT LOAD	EGRESS WIDTH REQUIRED	EGRESS WIDTH PROVIDED
MERCANTILE	269	DOORS: 269 X 0.2 = 53.8"	154"

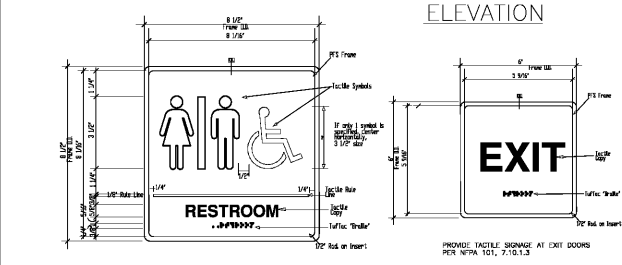
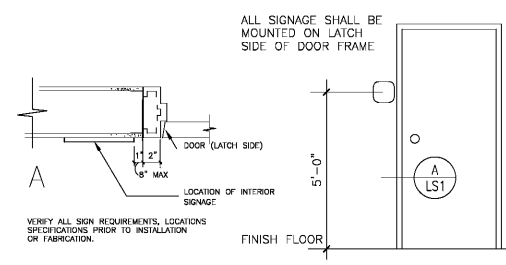
MEASUREMENT OF MEANS OF EGRESS IBC Reference

MAX. ALLOWABLE TRAVEL DISTANCE:	200'	ACTUAL	TABLE
		131'	1015.1
MAX. DEAD END CORRIDOR LENGTH:	20'	N/A	1016.3
MIN. CORRIDOR WIDTH:	44"	60"	1016.2
MIN. CLEAR OPENING OF EXIT DOORS:	32"	32"	1008.1.1

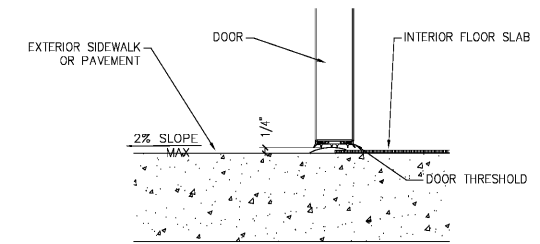


Robert E. Walker, IV
 Architect
 2229 FIRST AVE. SOUTH
 SUITE 110
 BIRMINGHAM, Alabama
 35233
 T-205.254.3212
 F-205.254.3269

Order Plans @



2 DETAIL TYPICAL INTERIOR SIGNAGE DETAIL
NTS ADA COMPLIANT



3 DETAIL TYPICAL DOOR THRESHOLD
3" = 1'-0" ADA COMPLIANT



DOLLAR GENERAL BUILDING
 Prototype 9100 SF E
 Store # 22323

DG Villa Rica
 101 Prospector Drive
 Villa Rica, GA

CONSTRUCTION DOCUMENTS

PROJECT NO.: 8095.89
 ISSUED: 07/21/2020

LIFE SAFETY PLAN

LS1