

CONCRETE FINISH SPECIFICATIONS

9 Step Concrete Floor Polishing Process:

1. Cut, clean out, prep and fill the concrete floor joints with the Euclid QWIKJOINT UVR polyurea joint filler.
2. Grind concrete floor with a combo set of 40/50 grit resin bond diamonds.
3. Grind concrete floor with a combo set of 60/100 grit resin bond diamonds.
4. Thoroughly clean the concrete floor and apply Diamond Hard densifier at 225 square feet per gallon.
5. Polish concrete floor with a combo set 100/200 grit resin bond diamonds.
6. Polish concrete floor with 400 grit resin bond diamonds.
7. Thoroughly clean concrete floor and then apply Diamond Hard densifier at 700 square feet per gallon.
8. Burnish / Polish concrete floor with 800 grit diamond impregnated pads.
9. Burnish / Polish concrete floor with 1500 grit diamond impregnated pads.

*The process can be used in both "Wet" and "Dry" applications.

*This process assumes a quality concrete finish by the floor finisher. If the floor to be polished is rough or has bad areas, additional grinding could be required at the GC/floor finisher's expense.

* See the attached Technical Data sheets "Diamond Hard TD 061111" and "QWIKJOINT TD Sheet 120312" for recommended joint filler and sealer/hardener. Equal Substitutions by Retro-Plate are allowed but must meet or exceed the composition outlined in the Technical Data sheets provided.

All Applicators must be certified by Euclid or Retro-Plate.

Required Vendors:

The Euclid Chemical Company
Phil Brandt
877-438-3826
PBrandt@euclidchemical.com

Retro-Plate Systems
Curtis Turnbull
888-942-3144
corporateaccounts@retroplatesystem.com



RETO PLATE

QUALITY CONCRETE FINISHES

PRODUCT NAME
Retro-Plate 99

MANUFACTURER
Retro-Plate Products, Inc. PO Box 59222, Provo, UT 84602

PRODUCTION DESCRIPTION
Retro-Plate 99 is a diamond mortar concrete polishing system that restores concrete floor surfaces, allowing the concrete to be polished to a high gloss, mirror-like finish. It is used in conjunction with the Retro-Plate process to restore the concrete floor.

TECHNICAL DATA

Application Rate:
1. Abrasion: ASTM C1273 - up to 8000 cycles in abrasion, concrete depending on concrete quality.
2. Hardener: ASTM C1273 - 100% concrete impact resistance.
3. Abrasion: ASTM C1273 - 100% concrete impact resistance.
4. Light Reflectivity: 10% increase in reflectivity.

Preparation:
1. Surface must be clean, dry, and free of any oil, grease, wax, or other contaminants.
2. Surface must be level and free of any surface irregularities.
3. Surface must be dry and free of any moisture.

Finish:
1. Apply Retro-Plate 99 to the concrete floor surface.
2. Grind the concrete floor surface with a 40/50 grit diamond set.
3. Grind the concrete floor surface with a 60/100 grit diamond set.

Availability and Installation:
Retro-Plate 99 is available in 100lb bags and 50lb bags. It is available in 5 gallon and 10 gallon buckets.

Technical Services:
For more information, contact the manufacturer at 801-426-1600 or visit their website at www.retro-plate.com.

EUCO DIAMOND HARD

Liquid Densifier and Sealer for Concrete

DESCRIPTION
EUCO DIAMOND HARD is a unique blend of silicate and silicate polymers that penetrate concrete surfaces and ethically react to form a silicate-silicate structure, resulting in increased strength, surface resistance, and abrasion resistance. EUCO DIAMOND HARD provides an attractive, non-soluble polymer concrete floor finish that is resistant to staining, acid, and water.

PRIMARY APPLICATIONS
• Interior or exterior
• Industrial floors
• Commercial residential floors
• Manufacturing plants
• Distribution centers
• Warehouse floors

FEATURES/BENEFITS
• Penetrates and increases density of the concrete surface
• Provides a high gloss finish
• Treats surface from permanent liquid moisture
• Resistant to stains, acids, and water
• Minimal floor maintenance
• Minimal dust and debris
• Easy to apply to new or existing concrete

TECHNICAL INFORMATION
VOC Content: 100% Solids, 0% VOCs
Dry Film Thickness: 1 mil
Application Rate: 225 sq ft/gal
Curing Time: 24 hours

Grain Size (microns)	% of Particles
20	60
40	35
60	5

Packaging: EUCO DIAMOND HARD is packaged in 5 gallon and 10 gallon plastic pails and 100 and 50 lb bags.

Storage: Store in a cool, dry place. Do not store in areas where it will be subjected to freezing temperatures.

The Euclid Chemical Company
1815 Rosswood Rd - Cleveland, OH 44115
Phone: (216) 531-9550 - Toll Free: (800) 361-7588 - Fax: (216) 531-9586
www.euclidchemical.com

EUCO QWIKJOINT UVR

UV-RESISTANT POLYUREA FLOOR JOINT FILLER

DESCRIPTION
EUCO QWIKJOINT UVR represents a new generation of polyurea technology with features and benefits unlike any other polyurea joint filler on the market. EUCO QWIKJOINT UVR creates a floor joint finish that is UV resistant, chemically resistant, and color-matching. EUCO QWIKJOINT UVR is ideal for use in high-traffic areas and is available in a variety of colors to match existing concrete floor joint finishes.

PRIMARY APPLICATIONS
• Concrete construction and concrete joints
• Check and seal repair for old floors
• Interior and exterior floors
• Freeze floors

FEATURES/BENEFITS
• UV resistant UV resistance
• Flexibility: 200% elongation
• Large shrinkage allows for greater flexibility in scheduling joint filling operations
• Tough performance ensures long-lasting and maintenance-free
• Suitable for filling cracks in older floors to reduce the risk of joint failure
• Wet cure in 15-20 minutes at 70°F (21°C)
• Low moisture sensitivity: 20% relative humidity

Property	Test Method	Result	ASTM D 3359	ASTM D 515
Dull to Gloss	-	35 increase	Class 1	Class 1
Shore A Hardness	ASTM D 2240	85	85	85
Tensile Strength	ASTM D 638	1200 psi @ 100% elongation	1200 psi @ 100% elongation	1200 psi @ 100% elongation
Compression at Break	ASTM D 695	1.5 MPa	1.5 MPa	1.5 MPa
Impact Strength	ASTM D 256	100 ft-lb	100 ft-lb	100 ft-lb
Elongation at Break	ASTM D 695	200%	200%	200%
Modulus	ASTM D 695	100 MPa	100 MPa	100 MPa

Packaging:
EUCO QWIKJOINT UVR is packaged in 10 lb (4.5 kg) single pack and 50 lb (22.7 kg) multi-pack.

Storage:
Store in a cool, dry place. Do not store in areas where it will be subjected to freezing temperatures.

The Euclid Chemical Company
1815 Rosswood Rd - Cleveland, OH 44115
Phone: (216) 531-9550 - Toll Free: (800) 361-7588 - Fax: (216) 531-9586
www.euclidchemical.com

CRETEFILL PRO 75

Technical Data

DESCRIPTION
CRETEFILL PRO 75 is a high-strength, high-early-strength concrete repair mortar. It is designed for use in repair applications where high strength and early strength are required. It is suitable for use in repair applications where high strength and early strength are required.

APPLICATION
CRETEFILL PRO 75 is used for repair of concrete surfaces. It is suitable for use in repair applications where high strength and early strength are required.

TECHNICAL DATA
Color: Gray
Packaging: 50 lb bag, 100 lb bag
Curing Time: 24 hours
Application Rate: 4-6 sq ft/bag

The Euclid Chemical Company
1815 Rosswood Rd - Cleveland, OH 44115
Phone: (216) 531-9550 - Toll Free: (800) 361-7588 - Fax: (216) 531-9586
www.euclidchemical.com

EUCO SHEET LIFE

TECHNICAL DATA

DESCRIPTION
EUCO SHEET LIFE is a high-strength, high-early-strength concrete repair mortar. It is designed for use in repair applications where high strength and early strength are required. It is suitable for use in repair applications where high strength and early strength are required.

Joint Depth (mm)	Joint Width (mm)	Joint Length (mm)	Joint Area (sq mm)
10	10	100	100
10	10	200	200
10	10	300	300
10	10	400	400
10	10	500	500
10	10	600	600
10	10	700	700
10	10	800	800
10	10	900	900
10	10	1000	1000

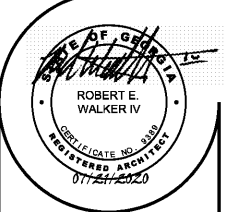
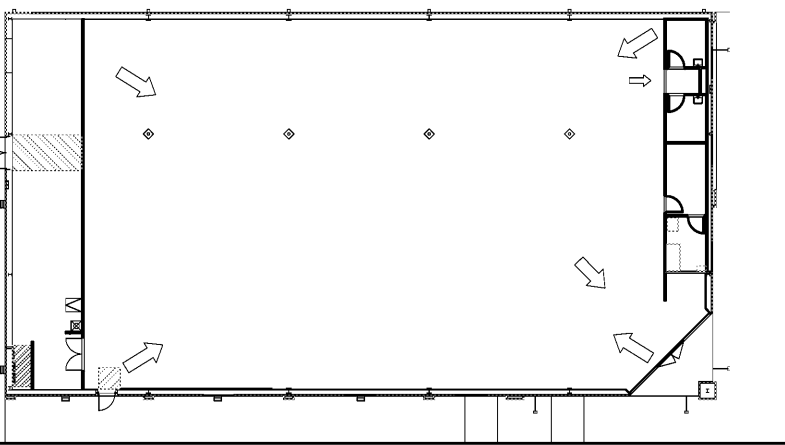
Packaging:
EUCO SHEET LIFE is packaged in 10 lb (4.5 kg) single pack and 50 lb (22.7 kg) multi-pack.

Storage:
Store in a cool, dry place. Do not store in areas where it will be subjected to freezing temperatures.

The Euclid Chemical Company
1815 Rosswood Rd - Cleveland, OH 44115
Phone: (216) 531-9550 - Toll Free: (800) 361-7588 - Fax: (216) 531-9586
www.euclidchemical.com

The following layout shows the required photos to be taken at completion. (Make sure the overhead lights are on for your photos.)

1. From each corner of the receiving area, facing the opposite corner.
2. Hall (inside entrance stores, one picture from each end of the hall).
3. Standing 10' from the entrance facing the entrance.



Robert E. Walker, IV
Architect
2221 FIRST AVE. SOUTH
SUITE 110
BIRMINGHAM, Alabama
35233
T-205.254.3212
F-205.254.3269

DOLLAR GENERAL
BUILDING
Prototype 9100 SF E
Store # 22323
101 Prospector Drive
Villa Rica, GA

CONSTRUCTION DOCUMENTS

PROJECT NO.: 8095.89
ISSUED: 07/21/2020

CONCRETE SPECS

G1.1