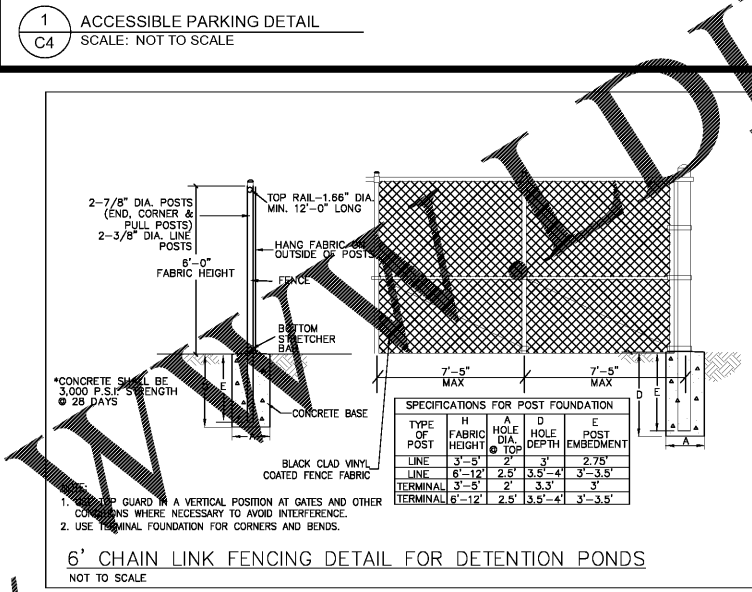
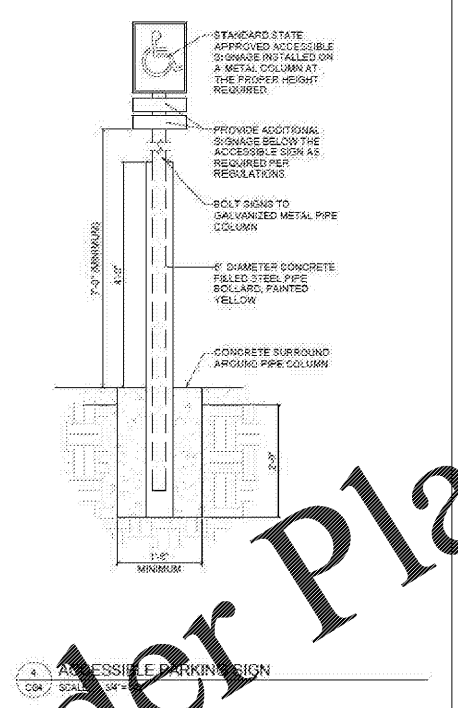
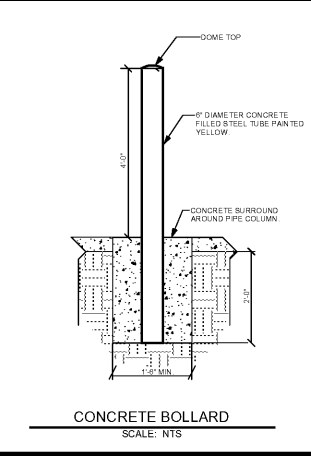
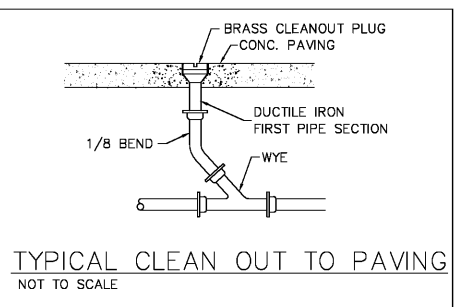
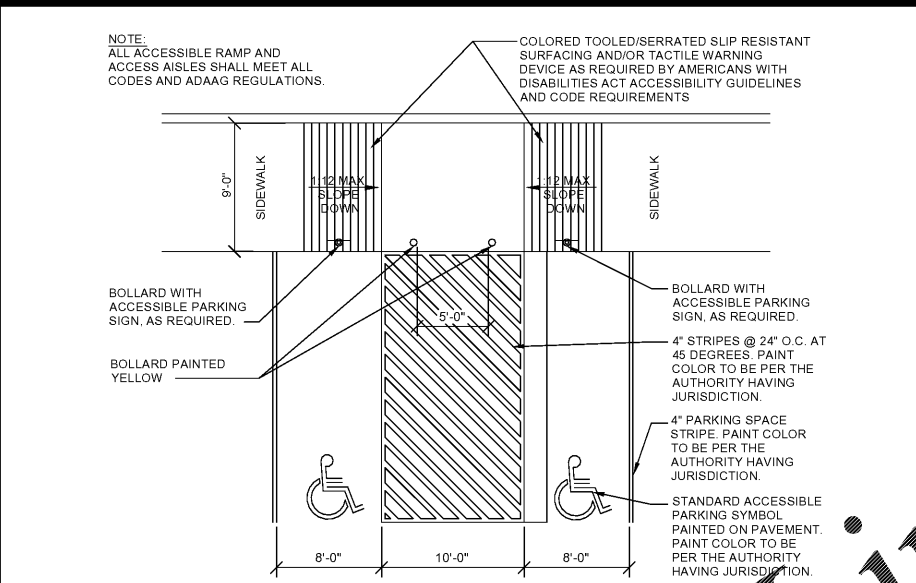
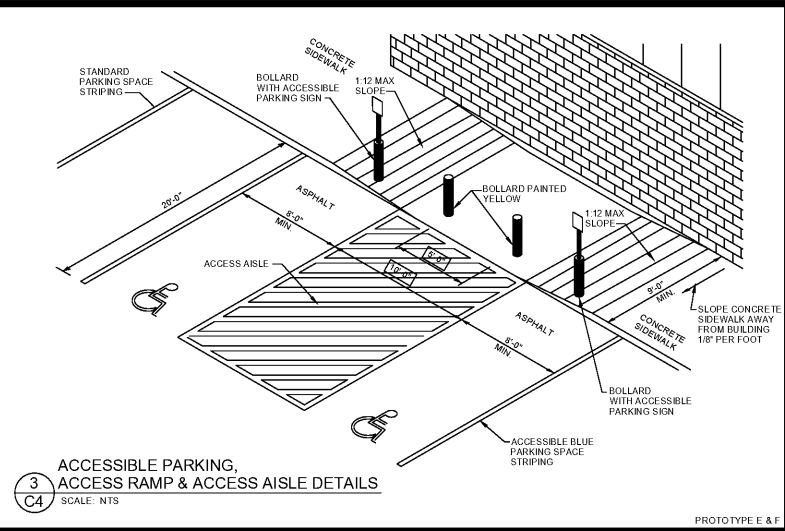
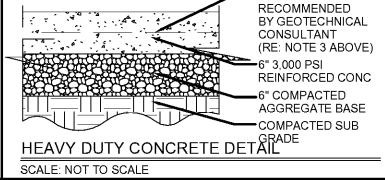
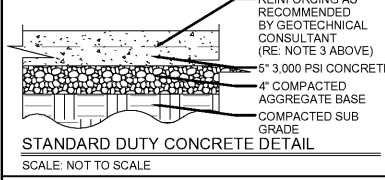
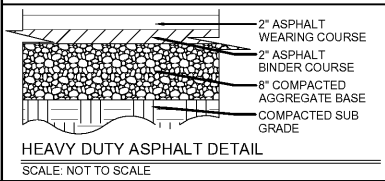
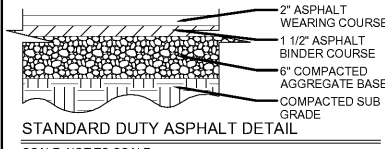


PLOT DATE: 07/24/20 4:23 PM
 R:\07-Production\0220052.DWG - Dollar General Villa Rica\Production\Engineering\Design\06-Villa Rica\0220052-Dollar-General-Villa Rica.dwg

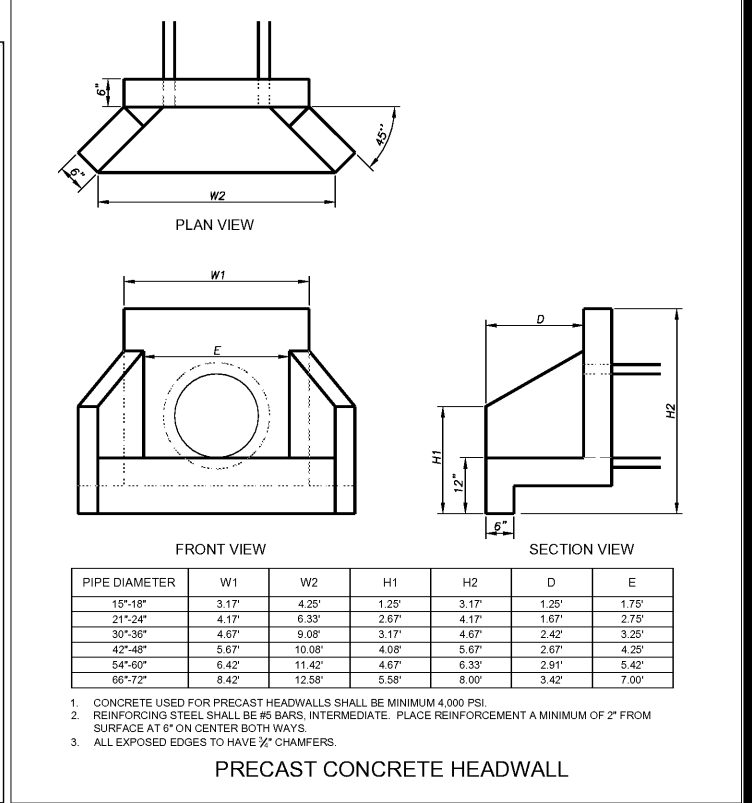
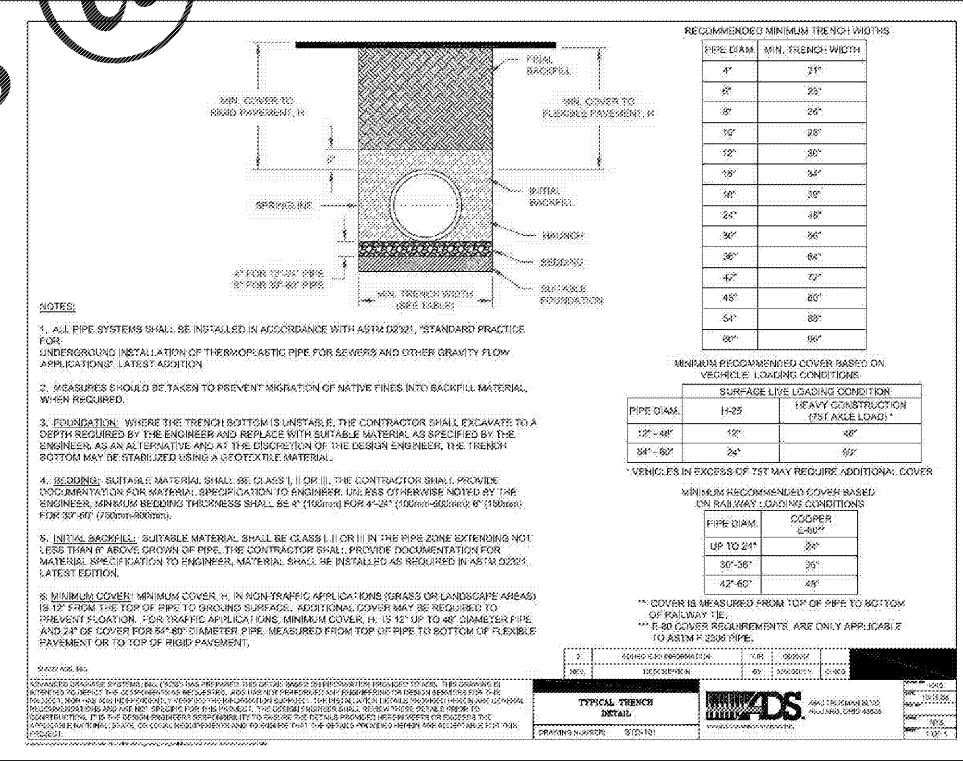
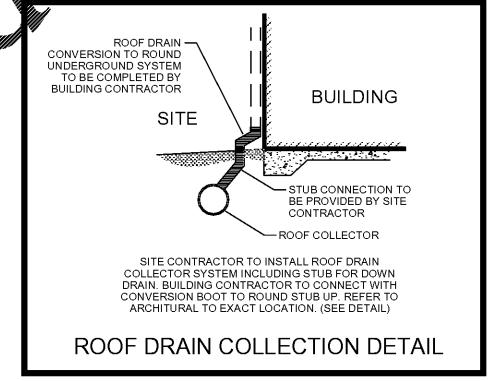
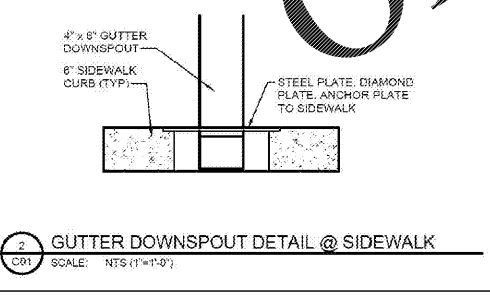
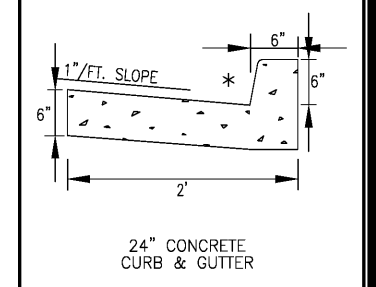
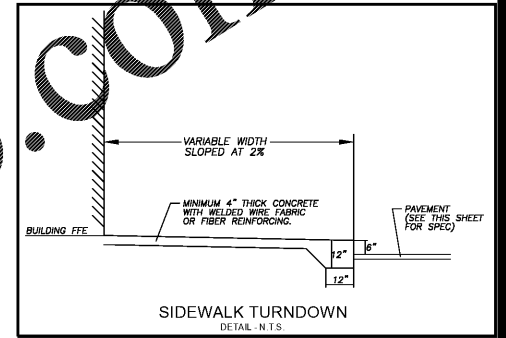
PAVEMENT DETAILS

1. DETAILS ARE DOLLAR GENERAL STANDARD REQUIREMENTS AND MAY INCREASE OR DECREASE WITH VARIOUS SOIL CONDITIONS. A GEOTECHNICAL INVESTIGATION WITH PAVEMENT DESIGN RECOMMENDATIONS SHALL BE COMPLETED FOR EACH DEVELOPMENT. THE FOLLOWING DETAILS ARE MINIMUM DOLLAR GENERAL PAVEMENT REQUIREMENTS. INCREASED RECOMMENDATIONS ARE TO BE USED.
2. THE SUBGRADE MATERIALS SHALL BE PROOF ROLLED AND/OR SCARIFIED AND COMPACTED PRIOR TO PLACEMENT OF BASE MATERIAL. WHERE EXISTING SUBGRADE MATERIALS ARE UNSUITABLE, THEY SHALL BE REMOVED AND REPLACED WITH COMPACTED SELECT MATERIAL IN ACCORDANCE WITH GEOTECHNICAL RECOMMENDATIONS.
3. HEAVY DUTY CONCRETE PAVEMENT AND STANDARD DUTY CONCRETE PAVEMENT (AS RECOMMENDED BY THE GEOTECHNICAL REPORT OR DOLLAR GENERAL MINIMUMS) SHALL BE STEEL REINFORCED. REINFORCEMENT TYPE SHALL BE PRIOR APPROVED BY DOLLAR GENERAL.
4. CONCRETE PAVEMENT PLAN SHALL BE PROVIDED TO DOLLAR GENERAL FOR PRIOR APPROVAL. ALL JOINTS MUST BE SEALED WITH AN APPROVED SEALANT. STEEL REINFORCING SHALL BE USED AT JOINTS. REFER TO ACI 330R (GUIDE FOR DESIGN AND CONSTRUCTION OF CONCRETE PARKING LOTS) FOR JOINT DESIGN AND LAYOUT.



SPECIFICATIONS FOR POST FOUNDATION

TYPE OF POST	H	A	D	E
	HEIGHT	HOLE DIA. TOP	HOLE DEPTH	POST EMBEDMENT
LINE	3'-5"	2"	3"	2'-7 1/2"
TERMINAL	6'-12"	2 1/2"	3 1/2"-4"	3'-3 1/2"
TERMINAL	3'-5"	2"	3 1/2"	3"



Order Plans @

Rochester & Associates, Inc.
 286 Highway 314, Suite A • Fayetteville, Georgia 30214
 (770) 716-8123 (770) 716-8124 Fax • www.rochester-assoc.com

CONSTRUCTION DETAILS
 FOR:
DOLLAR GENERAL VILLA RICA
 LAND LOT 195
 6TH DISTRICT
 CARROLL COUNTY, GA

REVISIONS

REV	DATE	DESCRIPTION

ANY CHANGES OR ALTERATIONS MADE TO THESE CONSTRUCTION DRAWINGS WITHOUT THE WRITTEN APPROVAL OF THE SEAL SHOWN HEREON AND ANY LIABILITY ASSOCIATED WITH THIS SEAL SHALL BE THE RESPONSIBILITY OF THE SEALER. KEEP THIS FILE FOR VERIFICATION OF ANY CHANGES.



SHEET 14 OF 16
 DATE: 07/24/20
 SCALE: N.T.S.
 JOB NO: 0220052.DWG
 REV'D BY: E/MH
 DRAWN BY: JRS