

LEGEND

- AI - ANGLE IRON FOUND
- AKA - ALSO KNOWN AS
- ACOSP - ALUMINUM CORRUGATED STEEL PIPE
- BC - BACK OF CURB
- BL - BUILDING SETBACK LINE
- BWF - BARB WIRE FENCE
- C&G - CURB & GUTTER
- C/T - CRIMP TOP PIPE
- CI - CURB INLET
- CL - CENTER LINE
- CLF - CHAIN LINK FENCE
- CMF - CONCRETE MONUMENT FOUND
- CMF - CORRUGATED METAL PIPE
- CO - CLEAN OUT
- CONC - CONCRETE
- CORPS - ARMY CORPS OF ENGINEERS
- DB, PG - DEED BOOK, PAGE
- DI - DROP INLET
- DIP - DUCTILE IRON PIPE
- DS - DOWN SPOUT
- DWCB - DOUBLE WING CATCH BASIN
- EP - EDGE OF PAVEMENT
- FIE - FINISH FLOOR ELEVATION
- FH - FIRE HYDRANT
- G - GAS LINE
- GM - GAS METER
- GP - GUY POLE
- GV - GAS VALVE
- GW - GUY WIRE
- HC - HANDICAP
- HW - HEADWALL
- HIWF - HOG WIRE FENCE
- IE - INVERT ELEVATION
- IPF - IRON PIN FOUND
- IPS - IRON PIN SET
- JB - JUNCTION BOX
- LL - LAND LOT LINE
- LLL - LAND LOT LINE
- LP - LIGHT POLE
- M - MANHOLE
- MON - MONUMENT
- NF - NOW OR FORMERLY
- O/T - OPEN TOP PIPE
- PBX - POWER BOX / TRANSFORMER
- P - OVERHEAD POWER LINE
- P/T - OH POWER & TELE LINE
- PL - PROPERTY LINE
- PM - POWER METER
- POB - POINT OF BEGINNING
- PP - POWER POLE
- PTP - POWER & TELEPHONE POLE
- PVC - POLYVINYLCHLORIDE PIPE
- RB - REINFORCING IRON BAR
- RCP - REINFORCED CONCRETE PIPE
- R/W - RIGHT OF WAY
- SS - SANITARY SEWER LINE
- SSE - SANITARY SEWER EASEMENT
- SW - SIDEWALK
- SWCB - SINGLE WING CATCH BASIN
- TBM - TEMPORARY BENCHMARK
- TBX - TELEPHONE BOX
- TF - TRANSFORMER
- TMH - TELEPHONE MANHOLE
- TP - TELEPHONE POLE
- TPOB - TRUE POINT OF BEGINNING
- T - OVERHEAD TELEPHONE LINE
- UP - UNDERGROUND POWER
- UT - UNDERGROUND TELEPHONE
- WI - WEIR INLET
- W - WATER LINE
- WM - WATER METER
- WMH - WATER MANHOLE
- WV - WATER VALVE

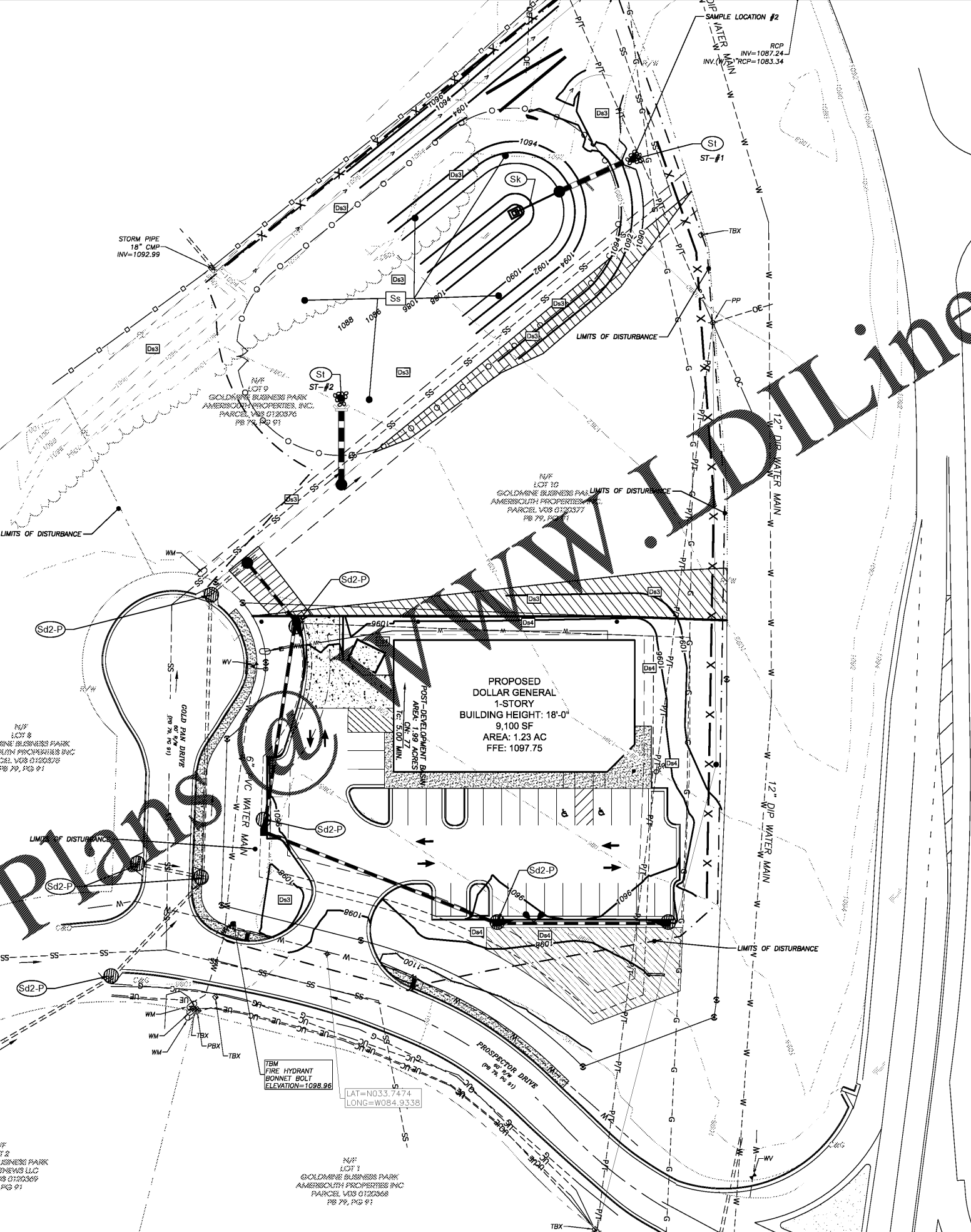
Permanent Pond Sediment Storage Calculations

1. Required Stormwater Storage (25 year) =	99,245	cf
2. Pond Total Drainage Basin (include offsite) =	7.4	ac
Required Sediment Storage per acre =	67	cy / ac
Total Required Sediment Storage =	13,410	cf
3. Total Storage Required (Stormwater Storage + Sediment Storage) =	112,655	cf
Available Storage =	129,735	cf
Available Storage Corresponding Elevation =	1,095	ft
Total Sediment Storage Provided (Total Provided - Stormwater Req) =	30,490	cf
4. Is available storage greater than total required storage =	Y	
5. Is additional sediment storage required =	N	
6. Clean Out Storage Volume (Provided Sediment Storage / 3) =	10,163	cf
Clean Out Storage Volume Corresponding Elevation =	1,089	ft
7. Is Length to Width Ratio Greater than 2:1 =	Y	
8. Is a Baffle Required to Increase the Length/Width Ratio =	N	

FLOATING SURFACE SKIMMER (SK)
 3.0" FAIRCLOTH SKIMMER
 ORIFICE DIAMETER: 2.7"
 LENGTH: TOP=133' BOTTOM=113'
 WIDTH: TOP=60' BOTTOM=39'
 TIME TO DRAIN: 72 HOURS

STORM DRAIN OUTLET PROTECTION #1 (ST-#1)
 Q100= 24.16 CFS ; V100= 9.53 FT/S
 TW<0.5 ; LA= 12' ; PIPE DIA.: 30" RCP
 W1= 7.5' ; W2= 14.5' ; OSD= 7'
 MAX STONE SIZE= 11" ; APRON THICKNESS= 16.2"
 USE GDOT TYPE 1 RIP/RAP
 NOTE: * 125% OF 100 YEAR FLOW AND VELOCITY

STORM DRAIN OUTLET PROTECTION #2 (ST-#2)
 Q25= 2.73 CFS ; V25= 3.46 FT/S
 TW<0.5 ; LA= 20' ; PIPE DIA.: 36" RCP
 W1= 9' ; W2= 11' ; OSD= 3'
 MAX STONE SIZE= 4" ; APRON THICKNESS= 5.4"
 USE GDOT TYPE 1 RIP/RAP



EROSION CONTROL CERTIFICATION:
 I CERTIFY THAT THE PERMITTEE'S EROSION, SEDIMENTATION AND POLLUTION CONTROL PLAN PROVIDES FOR AN APPROPRIATE AND COMPREHENSIVE SYSTEM OF BEST MANAGEMENT PRACTICES REQUIRED BY THE GEORGIA WATER QUALITY CONTROL ACT AND THE DOCUMENT "MANUAL FOR EROSION AND SEDIMENT CONTROL IN GEORGIA" (MANUAL) PUBLISHED BY THE GEORGIA SOIL AND WATER CONSERVATION COMMISSION AS OF JANUARY 1 OF THE YEAR IN WHICH THE LAND-DISTURBING ACTIVITY WAS PERMITTED, PROVIDES FOR THE SAMPLING OF THE RECEIVING WATER(S) OR THE SAMPLING OF THE STORM WATER OUTFALLS AND THAT THE DESIGNED SYSTEM OF BEST MANAGEMENT PRACTICES AND SAMPLING METHODS IS EXPECTED TO MEET THE REQUIREMENTS CONTAINED IN THE GENERAL NPDES PERMIT NO. GAR 100001."

(2) I CERTIFY UNDER PENALTY OF LAW THAT THIS PLAN WAS PREPARED AFTER A SITE VISIT TO THE LOCATIONS DESCRIBED HEREIN BY MYSELF OR MY AUTHORIZED AGENT, UNDER MY DIRECT SUPERVISION.

Eric M. Huffine
 ERIC M. HUFFINE, P.E.
 EXPIRATION DATE: SEPT. 25, 2022
 CERTIFICATION #15201

CODE	PRACTICE	DETAIL	MAN. SYMB.	DESCRIPTION
Co	CONSTRUCTION EXIT			Established stone pad located at the construction site exit to provide a place for removing mud from tires thereby protecting public streets.
Ds1	STURBED AREA STABILIZATION (WITH LOGGING)			Establishing temporary protection for disturbed areas where seedlings may not have a suitable growing season to produce an erosion retarding cover.
Ds2	STURBED AREA STABILIZATION (WITH WEED SEEDING)			Establishing a temporary vegetative cover with fast growing seedlings on disturbed areas.
Ds3	STURBED AREA STABILIZATION (WITH PERM PERENNIALS)			Establishing a permanent vegetative cover such as trees, shrubs, vines, grasses, or legumes on disturbed areas.
Ds4	STURBED AREA STABILIZATION (WOODING)			A permanent vegetative cover using sods on highly eroded or critically eroded lands.
Du	DUST CONTROL ON DISTURBED AREAS			Controlling surface and air movement of dust on construction site, roadways and similar sites.
Cd	CHECKDAM			A small temporary barrier or dam constructed across a swale, drainage ditch or area of concentrated flow.
Sd1	SEDIMENT BARRIER			A barrier to prevent sediment from leaving the construction site. It may be sandbags, bales of straw or hay, brush, logs and poles, gravel, or a silt fence.
Sd2	NET SEDIMENT TRAP			An impounding area created by excavating around a storm drain drop inlet. The excavated area will be filled and stabilized on completion of construction activities.
Sk	FLOATING SURFACE SKIMMER			A buoyant device that releases/drain water from the surface of sediment ponds, traps, or basins at a controlled rate of flow.
St	STORMWATER OUTLET PROTECTION			A paved or short section of riprap channel at the outlet of a storm drain system preventing erosion from the concentrated runoff.

PRIMARY PERMITTEE & DEVELOPER:
SW VILLA RICA, LLC
 4151 ASHFORD DUNWOODY RD
 ATLANTA, GA 30319

24 HOUR EMERGENCY CONTACT
 BRIAN SULLIVAN
 (770) 883-1702
ENGINEERING CONTACT
 ERIC HUFFINE, PE
 (770) 718-0600
SURVEYING CONTACT
 BRANDON REGISTER, RLS
 (770) 718-0600

GSWCC GEORGIA SOIL AND WATER CONSERVATION COMMISSION
 ERIC M. HUFFINE, P.E.
 LEVEL II CERTIFICATION DESIGN PROFESSIONAL
 CERTIFICATION NUMBER: 0000015201
 ISSUED: 09/25/2019 EXPIRES: 09/25/2022

GEORGIA811
 www.Georgia811.com

Rochester & Associates, Inc.
 286 Highway 314, Suite A • Fayetteville, Georgia 30214
 (770) 716-8123 (770) 716-8124 Fax • www.rochester-assoc.com

EROSION CONTROL PLAN - FINAL PHASE - PHASE 3
 FOR:
DOLLAR GENERAL
VILLA RICA
 LAND LOT 195
 6TH DISTRICT
 CARROLL COUNTY, GA

REVISIONS

NO.	DATE	DESCRIPTION

ANY CHANGES OR ALTERATIONS MADE TO THESE CONSTRUCTION DRAWINGS WITHOUT THE WRITTEN APPROVAL OF THE SEAL SHOWN HEREON AND ANY LIABILITY ASSOCIATED WITH THIS PROJECT SHALL BE THE RESPONSIBILITY OF THE ENGINEER. KEEP ON FILE FOR VERIFICATION OF ANY CHANGES.

GRAPHIC SCALE
 1" = 30'
 0' 30' 60'

GEORGIA REGISTERED PROFESSIONAL ENGINEER
 No. 28858
 ERIC M. HUFFINE

SHEET 11 OF 16
 DATE: 07/24/20
 SCALE: 1"=30'
 JOB NO.: G220052.DWG
 REV'D BY: JMH
 DRAWN BY: JRS

Order Plans