

- LEGEND**
- AIF - ANGLE IRON FOUND
 - AKA - ALSO KNOWN AS
 - ACOSP - ALUMINUM TYPE 3 CORRUGATED STEEL PIPE
 - BC - BACK OF CURB
 - BL - BUILDING SETBACK LINE
 - BWF - BARB WIRE FENCE
 - C&G - CURB & GUTTER
 - C/T - CRIMP TOP PIPE
 - CI - CURB INLET
 - CL - CENTER LINE
 - CLF - CHAIN LINK FENCE
 - CMF - CONCRETE MONUMENT FOUND
 - CMF - CORRUGATED METAL PIPE
 - CO - CLEAN OUT
 - CONC - CONCRETE
 - CORPS - ARMY CORPS OF ENGINEERS
 - DB.PG - DEED BOOK, PAGE
 - DI - DROP INLET
 - DIP - DUCTILE IRON PIPE
 - DS - DOWN SPOUT
 - DWCB - DOUBLE WING CATCH BASIN
 - EP - EDGE OF PAVEMENT
 - F/E - FINISH FLOOR ELEVATION
 - FH - FIRE HYDRANT
 - G - GAS LINE
 - GM - GAS METER
 - GP - GUY POLE
 - GV - GAS VALVE
 - GW - GUY WIRE
 - HC - HANDICAP
 - HW - HEADWALL
 - HWF - HOG WIRE FENCE
 - IE - INVERT ELEVATION
 - IPF - IRON PIN FOUND
 - IPS - IRON PIN SET
 - JB - JUNCTION BOX
 - LL - LAND LOT
 - LLL - LAND LOT LINE
 - LP - LIGHT POLE
 - MH - MANHOLE
 - MON - MONUMENT
 - N/F - NOW OR FORMERLY
 - OT - OPEN TOP PIPE
 - PBX - POWER BOX / TRANSFORMER
 - P- - OVERHEAD POWER LINE
 - P/T- - OH POWER & TELE LINE
 - PL - PROPERTY LINE
 - PM - POWER METER
 - POB - POINT OF BEGINNING
 - PP - POWER POLE
 - PTP - POWER & TELEPHONE POLE
 - PVC - POLYVINYLCHLORIDE PIPE
 - RB - REINFORCING IRON BAR
 - RCP - REINFORCED CONCRETE PIPE
 - R/W - RIGHT OF WAY
 - SS- - SANITARY SEWER LINE
 - SSE - SANITARY SEWER EASEMENT
 - SW - SIDEWALK
 - SWCB - SINGLE WING CATCH BASIN
 - TBM - TEMPORARY BENCHMARK
 - TBX - TELEPHONE BOX
 - TF - TRANSFORMER
 - TMH - TELEPHONE MANHOLE
 - TP - TELEPHONE POLE
 - TPOB - TRUE POINT OF BEGINNING
 - T- - OVERHEAD TELEPHONE LINE
 - UP - UNDERGROUND POWER
 - UT - UNDERGROUND TELEPHONE
 - WI - WEIR INLET
 - WL - WATER LINE
 - WM - WATER METER
 - WMH - WATER MANHOLE
 - WV - WATER VALVE

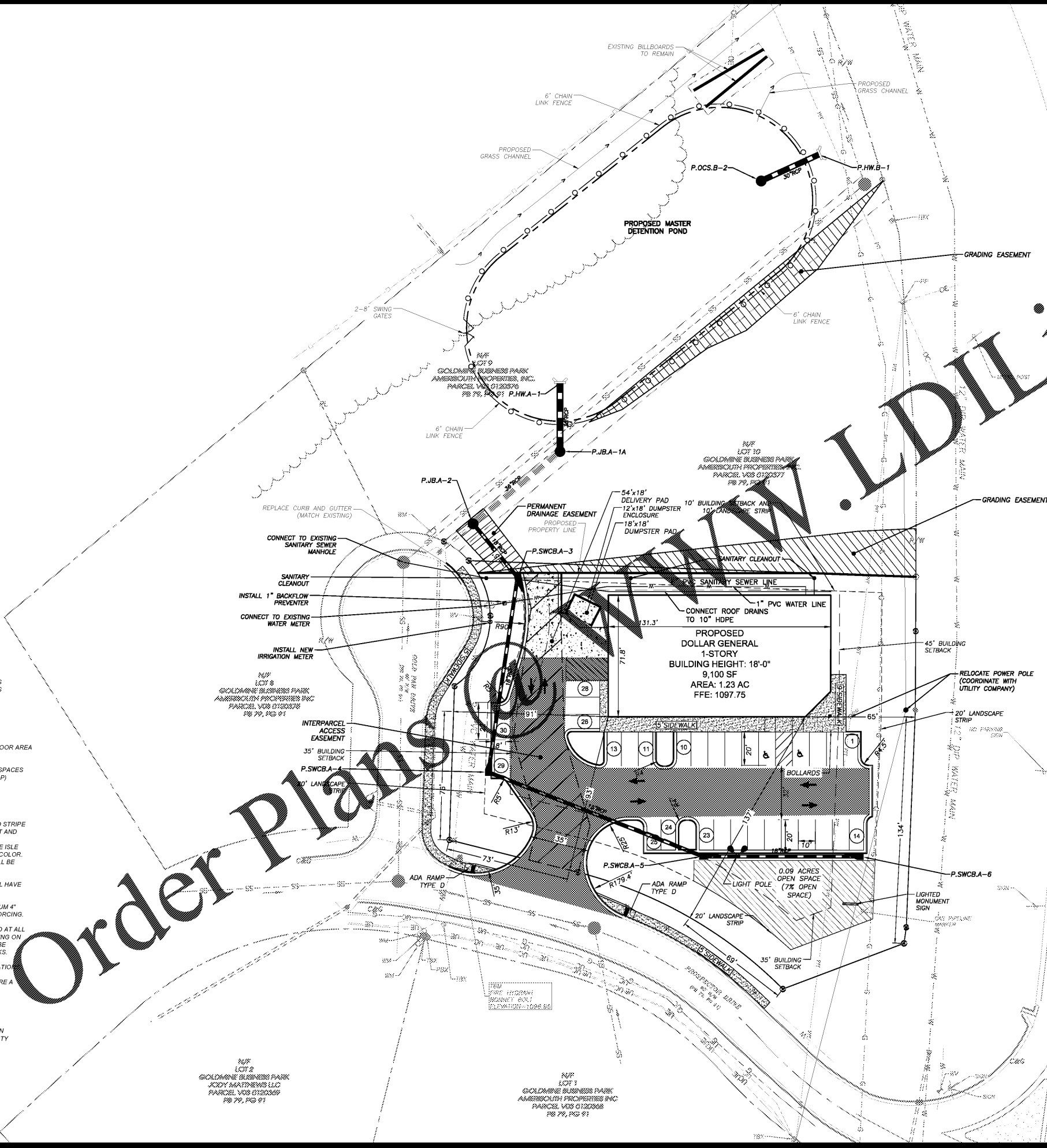
- SETBACKS**
FRONT (S.R. 101):
- 20' LANDSCAPE STRIP
 - 45' BUILDING SETBACK
 - LEFT (PROSPECTOR DRIVE):
 - 20' LANDSCAPE STRIP
 - 35' BUILDING SETBACK
 - RIGHT (W):
 - 10' LANDSCAPE STRIP
 - 10' BUILDING SETBACK
 - REAR (GOLDPAN DRIVE):
 - 20' LANDSCAPE STRIP
 - 35' BUILDING SETBACK

- UTILITY NOTES:**
- PROVIDERS:**
- SANITARY: CITY OF VILLA RICA UTILITIES
 - WATER: CITY OF VILLA RICA UTILITIES
 - GAS: ATLANTA GAS LIGHT
 - COMMUNICATIONS: CARROLL EMC
 - POWER: CARROLL EMC

- PARKING CALCULATIONS**
GROSS FLOOR AREA: 9,100 SF
- REQUIRED:** 1 SPACE PER 400 SF OF GROSS FLOOR AREA
9,100 SF / 400 = 23 SPACES
- PROVIDED:** 28 (10'x20') SPACES AND 2 (8'x22') SPACES
TOTAL: 30 SPACES (INCLUDING 2 HANDICAP)
- HANDICAP PARKING REQUIRED:** 2 SPACES
HANDICAP PARKING PROVIDED: 2 SPACES

- SITE NOTES**
1. PAINTED STANDARD PARKING SPACE AND ISLAND STRIPE COLOR SHALL BE YELLOW FOR ASPHALT PAVEMENT AND CONCRETE PAVEMENT. COLOR FOR PAINTED H.C. ACCESSIBLE PARKING SPACE STRIPES, ACCESSIBLE ISLE STRIPES, AND H.C. SYMBOLS, SHALL BE "H.C." BLUE COLOR. BOLLARDS SHALL BE PAINTED YELLOW, PAINT SHALL BE REFLECTIVE TYPE.
 2. SIDEWALKS ADJACENT TO BUILDING SLABS SHALL HAVE SEALED ISOLATION JOINTS.
 3. PORTLAND CEMENT SIDEWALKS SHALL BE MINIMUM 4" THICK, USE WELDED WIRE FABRIC OR FIBER REINFORCING.
 4. CONCRETE SPLASH BLOCKS SHALL BE INSTALLED AT ALL BUILDING DOWNSPOUTS THAT ARE NOT DISCHARGING ON CONCRETE PAVEMENT. DOWNSPOUTS SHALL NOT BE ALLOWED TO DISCHARGE ON CONCRETE SIDEWALKS.
 5. SEE SHEET 16 FOR ONSITE PAVEMENT SPECIFICATION.
 6. RETAINING WALLS GREATER THAN 4' TALL REQUIRE A SEPARATE PERMIT PRIOR TO BEING BUILT.

- STRIPING LEGEND**
YELLOW CURBING AND PARKING LOT BOLLARDS:
- SURFACES SHOULD BE CLEAN, DRY AND METAL SURFACES FREE OF HEAVY RUST 2 COATS SHERWIN WILLIAMS - KEH 4000 ACRYLIC ALKYD ENAMEL SAFETY YELLOW B55300
- STRIPING (PARKING LOT):**
- SURFACES SHOULD BE CLEAN, DRY, TOP COAT SHERWIN WILLIAMS - PRO MAR TRAFFIC MARKING PAINT WHITE TMS494.
- HANDICAP STRIPING (PARKING LOT):**
- SURFACES SHOULD BE CLEAN, DRY, TOP COAT SHERWIN WILLIAMS - PRO MAR TRAFFIC MARKING PAINT "H.C." BLUE.



PAVING LEGEND

[Pattern]	S.D. ASPHALT
[Pattern]	CONCRETE PAD
[Pattern]	H.D. ASPHALT
[Pattern]	CONCRETE SIDEWALK

PRIMARY PERMITTEE & DEVELOPER:
SW VILLA RICA, LLC
4151 ASHFORD DUNWOODY RD
ATLANTA, GA 30319

24 HOUR EMERGENCY CONTACT

BRIAN SULLIVAN	(770) 883-1702
ENGINEERING CONTACT	ERIC HUFFINE, PE (770) 718-0600
SURVEYING CONTACT	BRANDON REGISTER, RLS (770) 718-0600

UTILITY LEGEND

EX. OVERHEAD POWER	---OE---	OE---
EX. OVERHEAD COMMUNICATION	---OC---	OC---
EX. OVERHEAD POWER/TELEPHONE	P/T	
EX. UNDERGROUND TELEPHONE	---UC---	UC---
EX. WATER LINE	---W---	W---
EX. GAS LINE	---G---	G---
EX. STORM LINE	---S---	S---
P. WATER LINE	---	---
P. STORM LINE	---	---
P. UNDERGROUND TELEPHONE	UT	
P. OVERHEAD TELEPHONE	T	
P. OVERHEAD POWER	P	
P. OVERHEAD POWER/TELEPHONE	P/T	

Rochester & Associates, Inc.
286 Highway 314, Suite A • Fayetteville, Georgia 30214
(770) 716-8125 (770) 716-8124 Fax • www.rochester-assoc.com

SITE AND UTILITY LAYOUT FOR:
DOLLAR GENERAL VILLA RICA
LAND LOT 195
6TH DISTRICT
CARROLL COUNTY, GA

REVISIONS

NO.	DATE	DESCRIPTION

ANY CHANGES OR ALTERATIONS MADE TO THESE CONSTRUCTION DRAWINGS WITHOUT THE WRITTEN APPROVAL OF THE SEAL SHOWN HEREON AND ANY LIABILITY ASSOCIATED WITH THIS DRAWING SHALL BE THE RESPONSIBILITY OF THE ENGINEER. KEEP ON FILE FOR VERIFICATION OF ANY CHANGES.

GEORGIA REGISTERED PROFESSIONAL ENGINEER
ERIC M. HUFFINE

SHEET 4 OF 16
DATE: 07/24/20
SCALE: 1"=30'
JOB NO.: G220052.DWG
REV'D BY: E/MH
DRAWN BY: JRS

PLOT DATE: 07/24/20 4:21 PM
R:\07-Production\G220052\G220052.DWG - Dollar General Villa Rica\Production\Engineering\Design\06-06-Villa Rica\G220052-Rev-SITE.dwg