

LIGHT FIXTURE INFORMATION

RANDY SMITH
FACTORY SALES AGENCY
rsmith@fa-lighting.com
423-899-3724

LIGHT FIXTURE SCHEDULE

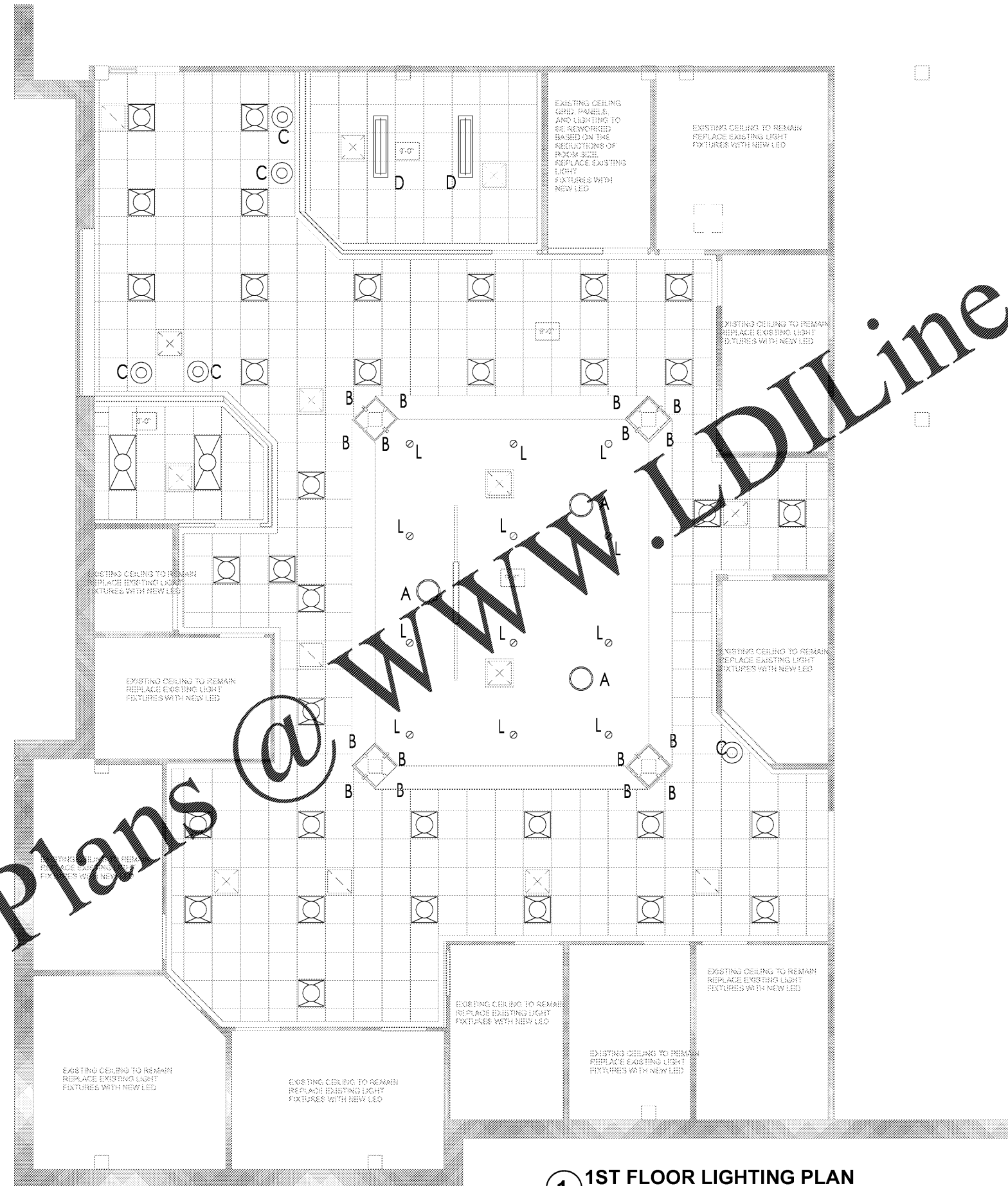
| SYMBOLS | MFR. & MODEL OR APPROVED EQUAL | LAMPS | | | VOLTS | MOUNTING | REMARKS |
|---------|---------------------------------|-------|-----|-------|-------|----------|-----------------|
| | | TYPE | NO. | WATTS | | | |
| A | WAC HOUDINI PD-55906 | LED | 1 | 16 | 120 | PENDENT | TELLER AREA |
| B | MODERN FORMS WS-11511 | LED | 1 | 16 | 120 | SURFACE | COLUMNS |
| C | MODERN FORMS PD-64814 | LED | 1 | 8 | 120 | SURFACE | COUNTER |
| D | FOCAL POINT FV413 | LED | 1 | 8 | 120 | RECESSED | CONFERENCE ROOM |
| F | MODERN FORMS PD-39947 | LED | 1 | 8 | 120 | PENDENT | BOARD ROOM |
| G | MODERN FORMS PD-44918 | LED | 1 | 8 | 120 | PENDENT | BOARD ROOM |
| H | COLUMBIA CBT24-L535 | LED | 1 | 8 | 120 | LAY-IN | NEW |
| K | COLUMBIA CBT22-L535 | LED | 1 | 8 | 120 | LAY-IN | NEW |
| L | PRESCOLITE LTR-450D-H-ML20L-DM1 | LED | 1 | 8 | 120 | RECESSED | TELLER AREA |
| | COMPASS LIGHTING CUZ | LED | 2 | 12 | 120 | WALL | |
| | COMPASS LIGHTING CCR | LED | 1 | 5 | 120 | WALL | |
| | VENT | | | | 120 | SURFACE | |

LEGEND

- 3A, 12V HOURS 2 1/2 HOURS NOTED
- 1A, GROUNDABLE
- 1A, 12V FLUSH FLOOR MOUNT
-
-
-
-
-
-
-
-
-
-
-
-
-
-
-
-

ELECTRICAL NOTES

- ALL WORK SHALL CONFORM TO THE NATIONAL ELECTRICAL CODE, TO NFPA 72, CURRENT EDITIONS, AND ALL STATE AND LOCAL CODES.
- CONFIRM LOCATION OF ALL ELECTRICAL DEVICES WITH OWNER BEFORE INSTALLATION.
- CONFIRM WITH OWNER WHICH LIGHTS TO BE DIMMED AND DIMMER AND SWITCH LOCATIONS.
- REMOVE ALL UNUSED ELECTRICAL BACK TO THE PANEL.
- REUSE EXISTING CIRCUITS.
- HOMERUNS SHOWN ARE TO BE 20 AMP, 120 VOLT, #12 COPPER WITH #12 COPPER GND.
- EXISTING CEILING GRID, PANELS AND LIGHTING TO BE REWORKED BASED ON THE REDUCTIONS OF ROOM SIZE. REPLACE EXISTING LIGHT FIXTURES WITH LED FIXTURES.



1 1ST FLOOR LIGHTING PLAN
SCALE: 1/4" = 1'-0"

elder consulting
Garrett Elder, P.E.
gelder@elder-engineer.com
423.309.1377
Mechanical, Electrical, and
Plumbing Design
Services
P.O. Box 4480
Chattanooga, TN 37405

ARTECH
ARCHITECTURE
&
INTERIORS

1410 COWART STREET
CHATTANOOGA, TN 37408
423.265.4313

ROCK POINT BANK

401 Chestnut Street Chattanooga, Tennessee



ISSUE DATES
INITIAL ISSUE 05-27-20

JOB NO. 20-011 | DWN RJC | CK'D RJC

E2.0
1ST FLOOR
LIGHTING PLAN

Order Plans @ www.LDILine.com