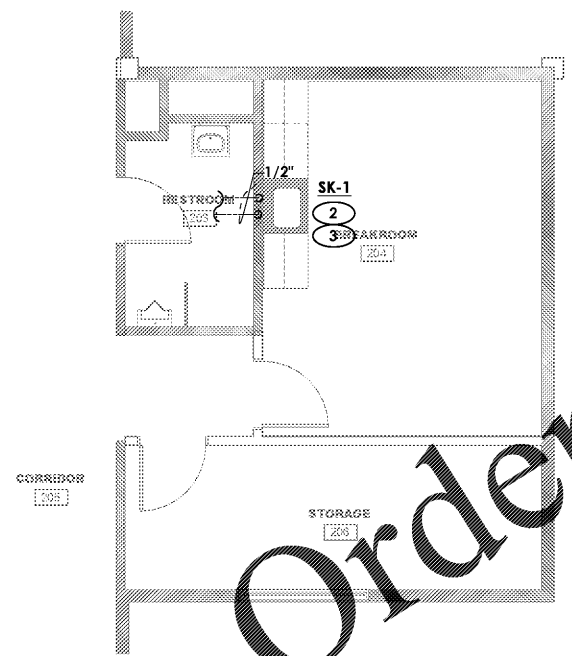
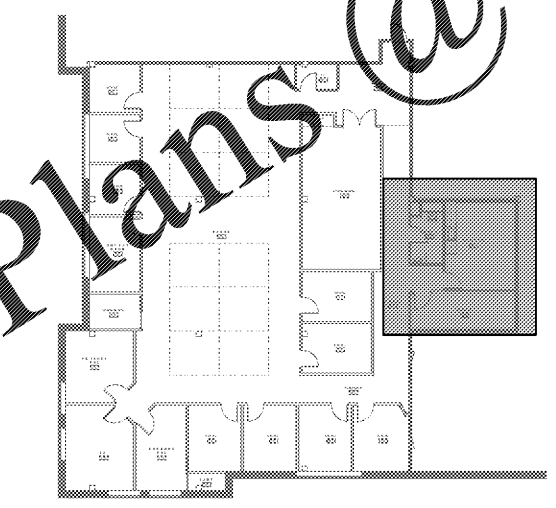


1 SANITARY 2ND FLOOR PLAN
 SCALE: 1/4" = 1'-0"



2 DOMESTIC 2ND FLOOR PLAN
 SCALE: 1/4" = 1'-0"



3 KEY PLAN

GENERAL SHEET NOTES

1. PLUMBING CONTRACTOR SHALL FIELD VERIFY ALL POINTS OF CONNECTION FOR SANITARY, VENT, AND DOMESTIC PIPING. CONFIRM WITH BUILDING FACILITIES PRIOR TO WORK.
2. FOR FINAL CONNECTION SIZES TO FIXTURES NOT SHOWN ON THIS DRAWING REFER TO THE PLUMBING FIXTURE SCHEDULE.
3. SOME OBJECTS ARE SHOWN OFFSET FOR CLARITY.

KEYNOTES

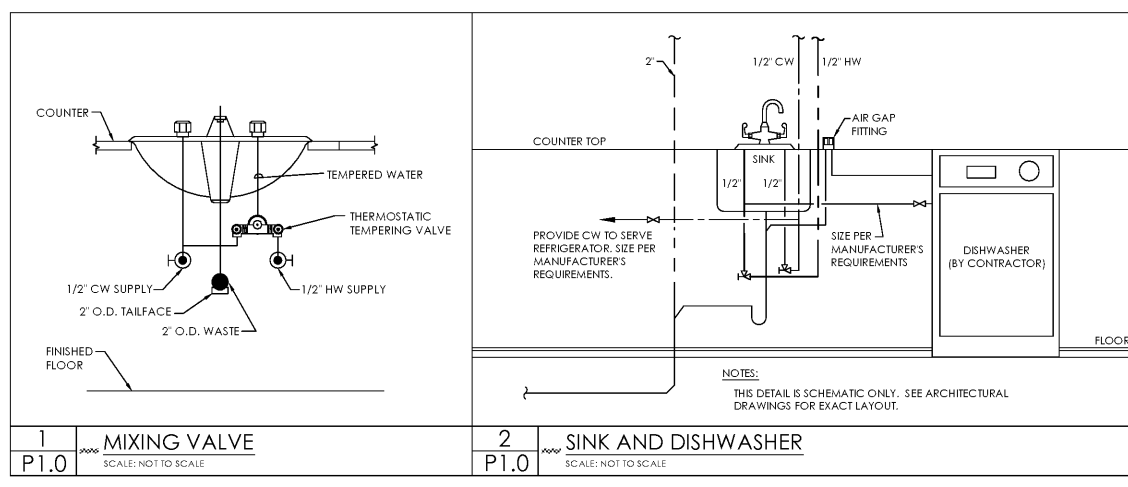
1. CONNECT 2" SANITARY AND 1-1/2" VENT TO EXISTING SANITARY AND VENT IN ADJACENT BATHROOM.
2. CONNECT 1/2" HOT AND COLD WATER TO EXISTING HOT AND COLD IN ADJACENT BATHROOM.
3. PROVIDE HOT WATER FOR DISHWASHER AND COLD WATER TO REFRIGERATOR/ICE MAKER. REFER TO DETAIL 2 AND ARCHITECTURAL LAYOUT FOR EXACT LAYOUT OF EQUIPMENT.

GENERAL NOTES [NOT ALL APPLY]

1. ALL WORK SHALL BE IN ACCORDANCE WITH THE 2012 INTERNATIONAL PLUMBING CODE, STATE FIRE MARSHALL, OFFICE OF THE STATE ARCHITECT, AND AUTHORITIES HAVING JURISDICTIONS.
2. CONTRACTOR SHALL VERIFY ALL EXISTING UTILITIES LOCATION, SIZE, DEPTH, PRESSURE AND AVAILABILITY PRIOR TO START OF WORK.
3. CONTRACTOR SHALL COORDINATE WITH ALL OTHER TRADES FOR CLEARANCES AND WORK INCLUDED PRIOR TO START OF WORK. KEEP ALL PIPING CLEAR FROM LOAD BEARING FOOTINGS.
4. REFER TO ARCHITECTURAL DRAWINGS FOR EQUIPMENT SPECIFICATIONS NOT GIVEN ON THESE DRAWINGS.
5. SEE ARCHITECTURAL DRAWINGS FOR EXACT PLUMBING FIXTURE LOCATIONS AND QUANTITIES.
6. BEFORE STARTING TRENCHING CONTRACTOR SHALL VERIFY EXACT SIZE, LOCATION AND ELEVATION OF EXISTING LINES, LATERALS AND WYES. SHOULD IT BE NECESSARY TO REROUTE LINES DUE TO CONDITIONS FOUND ON THE SITE OR IF INDICATED POINTS OF CONNECTIONS CANNOT BE MADE TO LINES AS FOUND, THE CONTRACTOR SHALL, BEFORE CONTINUING, NOTIFY THE ENGINEER PRIOR TO BEGINNING ANY WORK WHICH MAY BE AFFECTED.
7. ALL CLEANOUTS SHALL BE ACCESSIBLE. CLEANOUTS SHALL BE INSTALLED PER UNIFORM PLUMBING CODE.
8. CONTRACTOR SHALL KEEP THEIR WORK, AND ADJACENT AREAS AFFECTED, FREE AND CLEAR FROM ALL DEBRIS CAUSED BY THE WORK OF THIS SECTION. DURING AND UPON COMPLETION OF WORK HEREIN SPECIFIED, REMOVE FROM BUILDING AND THE ALL DEBRIS, UNUSED MATERIALS, AND EQUIPMENT CAUSED BY WORK OF THIS SECTION AND LEAVE WORK IN A CLEAN, ACCEPTABLE CONDITION.
9. ALL VENTS THRU ROOF SHALL BE MINIMUM OF THREE FEET VERTICALLY AND TEN FEET HORIZONTALLY FROM AIR CONDITIONING EQUIPMENT FRESH AIR INTAKES, WINDOW, DOOR OR OTHER OPENINGS.
10. SLOPE OF BUILDING SEWERS SHALL NOT BE LESS THAN 1%. THE MINIMUM SLOPE FOR STORM DRAINAGE SYSTEMS IS 1% UNLESS APPROVED BY THE CITY BUILDING OFFICIAL.
11. THESE DRAWINGS ARE DIAGRAMMATIC. DO NOT SCALE. THEY ARE TO ASSIST THE PLUMBING CONTRACTOR FOR PRICING AND INSTALLING THE PROJECT. IT IS THE SOLE RESPONSIBILITY OF THE PLUMBING CONTRACTOR TO VERIFY SIZES, CAPACITIES, DIMENSIONS, CLEARANCE AND COORDINATION WITH OTHER TRADES FOR A COMPLETE AND PROPER PLUMBING SYSTEM FOR THE ENTIRE PROJECT. PLUMBING CONTRACTOR SHALL VISIT THE SITE TO VERIFY THE EXISTING CONDITIONS AT THE JOB SITE BEFORE FINAL BIDDING.
12. ALL THE WASTE CLEANOUTS ARE NOT SHOWN ON THESE DESIGN DRAWINGS. THE INSTALLED WASTE PIPING MIGHT DIFFER FROM THESE DESIGN DRAWINGS THEREFORE PROVIDE ALL REQUIRED CLEANOUTS PER THE CURRENT PLUMBING CODE.
13. ADA PLUMBING FIXTURES SHALL BE MOUNTED AT REQUIRED HEIGHTS AND WITH ALL RELATED ACCESSORIES AS REQUIRED.

PLUMBING FIXTURE SCHEDULE

ITEM	DESCRIPTION	SPECIFICATION	CW	HW	W	V
SK-1	SINK	ELKAY, DLR191910 LUSTERTONE 18GA STAINLESS STEEL 19-1/2" X 19" X 10" DROP IN SINK				
	FAUCET	SYMMONS, S-23 8"CC FAUCET WITH INTEGRAL 8-3/4" CAST SWING SPOUT, CERAMIC DISK CARTRIDGE AND METAL SINGLE LEVER HANDLE				
	DRAIN	ZURN, Z8741-PC HEAVY DUTY BASKET STRAINER WITH CAST BRASS LOCK AND COUPLING NUT	1/2"	1/2"	2"	1-1/2"
	TRAP	ZURN, Z8702-PC 1-1/2" CAST BRASS 17 GAUGE P-TRAP WITH CLEANOUT				
	SUPPLIES	ZURN, Z8804-XL-LRLKQ-PC 1/2" X 3/8" COMP X COMP LAVATORY SUPPLY KIT WITH ESCUTCHEONS, 1/4 TURN CHROME PLATED STOPS AND CHROME PLATED COPPER TUBE SUPPLY LINES				



ISSUE DATES
 INITIAL ISSUE 05-27-20