

Figure 404.2.4.1 Maneuvering Clearances at Manual Swinging Doors and Gates

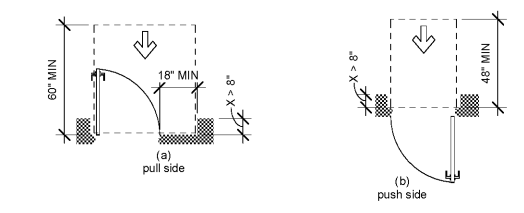


Figure 404.2.4.3 Maneuvering Clearances at Recessed Doors and Gates

Approach Direction	Door or Gate Side	Minimum Maneuvering Clearance	
		Perpendicular to Doorway (Beyond latch side unless noted)	Parallel to Doorway (Beyond latch side unless noted)
From front	Pull	60 inches	18 inches
From front	Push	48 inches	0 inches ¹
From hinge side	Pull	60 inches	36 inches
From hinge side	Push	54 inches	42 inches
From hinge side	Push	42 inches ²	22 inches ³
From latch side	Pull	48 inches ⁴	24 inches
From latch side	Push	42 inches ⁴	24 inches

1. Add 12 inches if closer and latch are provided.
 2. Add 6 inches if closer and latch are provided.
 3. Beyond hinge side.
 4. Add 6 inches if closer is provided.

404.2.4 Maneuvering Clearances. Minimum maneuvering clearances at doors and gates shall comply with 404.2.4. Maneuvering clearances shall extend the full width of the doorway and the required latch side or hinge side clearance.

EXCEPTION: Entry doors to hospitals patient rooms shall not be required to provide the clearance beyond the latch side of the door.

404.2.4.1 Swinging Doors and Gates. Swinging doors and gates shall have maneuvering clearance complying with Table 404.2.4.1.

404.2.4.3 Recessed Doors and Gates. Maneuvering clearances for forward approach shall be provided when any obstruction within 18 inches (455 mm) of the latch side of a doorway projects more than 8 inches (205 mm) beyond the face of the door, measured perpendicular to the face of the door or gate.

Advisory 404.2.4.3 Recessed Doors and Gates. A door can be recessed due to wall thickness or because of the placement of casework and other fixed elements adjacent to the doorway. This provision must be applied wherever doors are recessed.

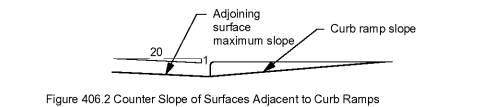


Figure 406.2 Counter Slope of Surfaces Adjacent to Curb Ramps

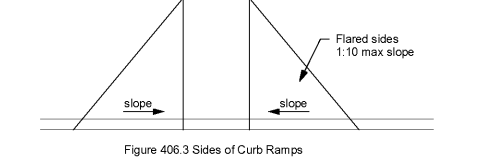


Figure 406.3 Sides of Curb Ramps

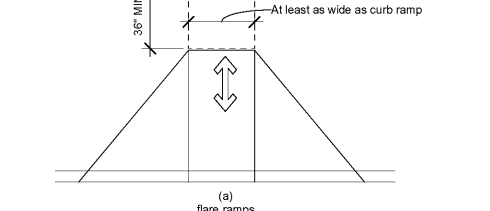


Figure 406.4 Landings at the Top of Curb Ramps

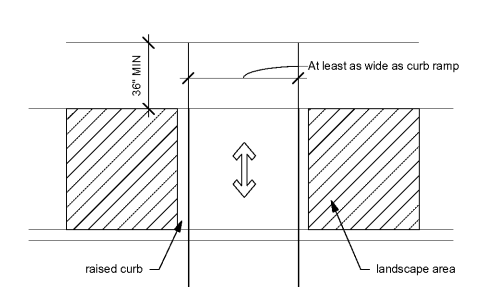


Figure 406.5 Handrail Clearance

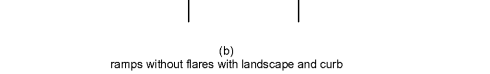


Figure 406.6 Horizontal Projections Below Gripping Surface

406 Curb Ramps

406.1 General. Curb ramps on accessible routes shall comply with 406, 405.4 through 405.5, and 405.10.

406.2 Counter Slope. Counter slopes of adjoining surfaces and lead surfaces immediately adjacent to the curb ramp shall not be steeper than 1:20. The counter slopes at transitions at curb ramps to walks, outdoor stairs, or ramps shall be at the same slope.

406.3 Sides of Curb Ramps. When provided, curb ramps shall be steeper than 1:10.

406.4 Landings. Landings shall be provided at the tops of curb ramps. The landing clear length shall be 36 inches (915 mm) minimum. The landing clear width shall be at least as wide as the curb ramp, excluding flared sides, leading to the landing.

406.5 Location. Curb ramps and the flared sides of curb ramps shall be located so that they do not project into particular traffic lanes, parking spaces, or parking access aisles. Curb ramps of marked crossings shall be wholly contained within the markings, including any flared sides.

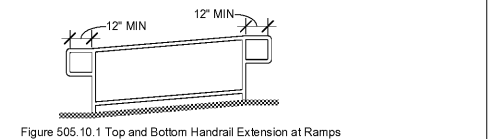


Figure 505.10.1 Top and Bottom Handrail Extension at Ramps

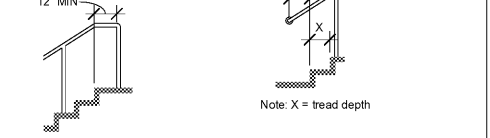


Figure 505.10.2 Top Handrail Extension at Stairs

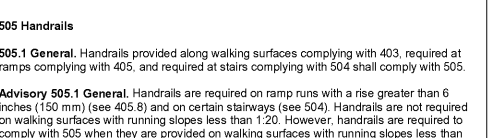


Figure 505.10.3 Bottom Handrail Extension at Stairs

505 General. Handrails provided along walking surfaces complying with 403, required at ramps complying with 405, and required at stairs complying with 504 shall comply with 505.

Advisory 505.1 General. Handrails are required on ramp runs with a rise greater than 6 inches (150 mm) (see 405.8) and on certain stairways (see 504). Handrails are not required on walking surfaces with running slopes less than 1:20. However, handrails are required to comply with 505 when they are provided on walking surfaces with running slopes less than 1:20 (see 403.6). Sections 505.2, 505.3, and 505.10 do not apply to handrails provided on walking surfaces with running slopes less than 1:20 as these sections only reference requirements for ramps and stairs.

505.2 Where Required. Handrails shall be provided on both sides of stairs and ramps.

EXCEPTION: In assembly areas, handrails shall not be required on both sides of aisle ramps where a handrail is provided at either side or within the aisle width.

505.3 Continuity. Handrails shall be continuous within the full length of each stair flight or ramp run. Inside handrails on switchback or dogleg stairs and ramps shall be continuous between flights or runs.

EXCEPTION: In assembly areas, handrails on ramps shall not be required to be continuous in aisles serving seating.

505.4 Height. Top of gripping surfaces of handrails shall be 34 inches (865 mm) minimum and 38 inches (965 mm) maximum vertically above walking surfaces, stair nosings, and ramp surfaces. Handrails shall be at a consistent height above walking surfaces, stair nosings, and ramp surfaces.

Advisory 505.4 Height. The requirements for stair and ramp handrails in this document are for adults. When children are the principal users in a building or facility (e.g., elementary schools), a second set of handrails at an appropriate height can assist them and aid in preventing accidents. A maximum height of 28 inches (710 mm) measured to top of the gripping surface from the ramp surface or stair nosing is recommended for handrails designed for children. Sufficient vertical clearance between upper and lower handrails, 9 inches (230 mm) minimum, should be provided to help prevent entrapment.

505.5 Clearance. Clearance between handrail gripping surfaces and adjacent surfaces shall be 1 1/2 inches (38 mm) minimum.

505.6 Gripping Surface. Handrail gripping surfaces shall be continuous along their length and shall not be obstructed along their tops or sides. The bottoms of handrail gripping surfaces shall not be obstructed for more than 20 percent of their length. Where provided, horizontal projections shall occur 1 1/2 inches (38 mm) minimum below the bottom of the handrail gripping surface.

EXCEPTIONS:

- Where handrails are provided along walking surfaces with slopes not steeper than 1:20, bottoms of handrail gripping surfaces shall be permitted to be obstructed along entire length where they are integral to crash rails or other safety devices.
- The distance between horizontal projections at the bottom of the gripping surface shall be permitted to be reduced by 1/8 inch (2 mm) to 1/2 inch (13 mm) of additional handrail perimeter dimension that exceeds 4 inches (100 mm).

Advisory 505.6 Gripping Surface. People with disabilities, older people, and others benefit from continuous gripping surfaces that permit users to use the fingers outward or downward to grasp the handrail, particularly as the user experiences a loss of equilibrium or begins to fall.

505.7 Cross Section. The handrail gripping surface shall have a cross section complying with 505.7.1 or 505.7.2.

505.7.1 Circular Cross Section. Handrail gripping surfaces with a circular cross section shall have a outside diameter of 1 1/4 inches (32 mm) minimum and 2 inches (51 mm) maximum.

505.10.1 Top and Bottom Extension at Ramps. Ramp handrails shall extend horizontally above the landing 12 inches (305 mm) minimum beyond the top and bottom of ramp. Extensions shall return to a wall, guard, or the landing surface, or shall be continuous to the handrail of an adjacent ramp run.

505.10.2 Top Extension at Stairs. At the top of a stair flight, handrails shall extend horizontally above the landing 12 inches (305 mm) minimum beginning directly above the first riser nosing. Extensions shall return to a wall, guard, or the landing surface, or shall be continuous to the handrail of an adjacent stair flight.

505.10.3 Bottom Extension at Stairs. At the bottom of a stair flight, handrails shall extend at the slope of the stair flight for a horizontal distance at least equal to one tread depth beyond the last riser nosing. Extension shall return to a wall, guard, or the landing surface, or shall be continuous to the handrail of an adjacent stair flight.

505.5 Clearance. Clearance between handrail gripping surfaces and adjacent surfaces shall be 1 1/2 inches (38 mm) minimum.

505.6 Gripping Surface. Handrail gripping surfaces shall be continuous along their length and shall not be obstructed along their tops or sides. The bottoms of handrail gripping surfaces shall not be obstructed for more than 20 percent of their length. Where provided, horizontal projections shall occur 1 1/2 inches (38 mm) minimum below the bottom of the handrail gripping surface.

EXCEPTIONS:

- Where handrails are provided along walking surfaces with slopes not steeper than 1:20, bottoms of handrail gripping surfaces shall be permitted to be obstructed along entire length where they are integral to crash rails or other safety devices.
- The distance between horizontal projections at the bottom of the gripping surface shall be permitted to be reduced by 1/8 inch (2 mm) to 1/2 inch (13 mm) of additional handrail perimeter dimension that exceeds 4 inches (100 mm).

Advisory 505.6 Gripping Surface. People with disabilities, older people, and others benefit from continuous gripping surfaces that permit users to use the fingers outward or downward to grasp the handrail, particularly as the user experiences a loss of equilibrium or begins to fall.

505.7 Cross Section. The handrail gripping surface shall have a cross section complying with 505.7.1 or 505.7.2.

505.7.1 Circular Cross Section. Handrail gripping surfaces with a circular cross section shall have a outside diameter of 1 1/4 inches (32 mm) minimum and 2 inches (51 mm) maximum.

505.10.1 Top and Bottom Extension at Ramps. Ramp handrails shall extend horizontally above the landing 12 inches (305 mm) minimum beyond the top and bottom of ramp. Extensions shall return to a wall, guard, or the landing surface, or shall be continuous to the handrail of an adjacent ramp run.

505.10.2 Top Extension at Stairs. At the top of a stair flight, handrails shall extend horizontally above the landing 12 inches (305 mm) minimum beginning directly above the first riser nosing. Extensions shall return to a wall, guard, or the landing surface, or shall be continuous to the handrail of an adjacent stair flight.

505.10.3 Bottom Extension at Stairs. At the bottom of a stair flight, handrails shall extend at the slope of the stair flight for a horizontal distance at least equal to one tread depth beyond the last riser nosing. Extension shall return to a wall, guard, or the landing surface, or shall be continuous to the handrail of an adjacent stair flight.

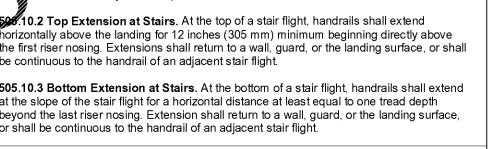


Figure 602.5 Drinking Fountain Spout Location

602 Drinking Fountains

602.4 Spout Height. Spout outlets shall be 36 inches (915 mm) maximum above the finish floor or ground. Spout outlets of drinking fountains for standing persons shall be 38 inches (965 mm) minimum and 43 inches (1090 mm) maximum above the finish floor or ground.

602.5 Spout Location. The spout shall be located 15 inches (380 mm) minimum from the vertical support and 5 inches (125 mm) maximum from the front edge of the unit, including bumpers. Where only a parallel approach is provided, the spout shall be 3-1/2 inches (90 mm) maximum from edge of the drinking fountain, including bumpers.

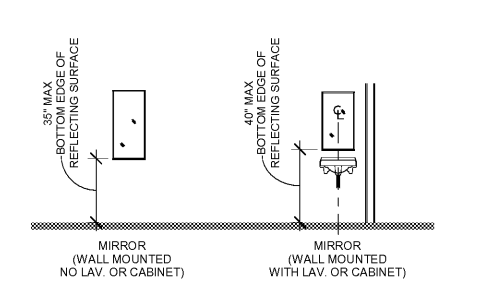


Figure 603.3 Mirrors

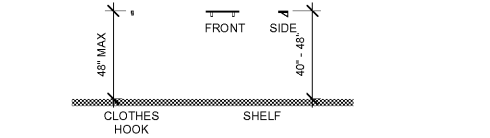


Figure 603.4 Coat Hooks and Shelves

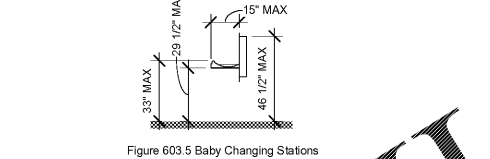


Figure 603.5 Baby Changing Stations

603 Toilet and Bathing Rooms

603.3 Mirrors. Mirrors located above lavatories or counter tops shall be installed with the bottom edge of the reflecting surface 40 inches (1015 mm) maximum above the finish floor or ground. Mirrors located above lavatories or counter tops shall be installed with the bottom edge of the reflecting surface 35 inches (890 mm) maximum above the finish floor or ground.

603.4 Coat Hooks and Shelves. Coat hooks shall be located within one of the reach ranges specified in 308. Shelves shall be located 40 inches (1015 mm) minimum and 48 inches (1220 mm) maximum above the finish floor.

603.5 (Ansi 2009) Diaper Changing Tables. Diaper changing tables shall comply with Sections 309 and 902.

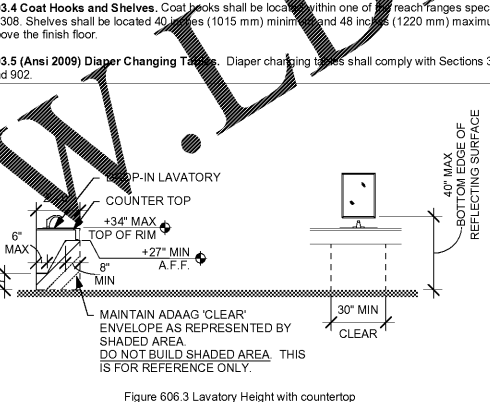


Figure 606.3 Lavatory Height with countertop

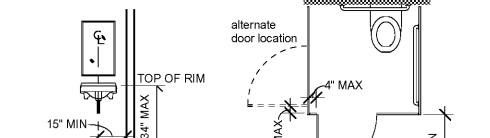


Figure 606.3 Lavatory Height

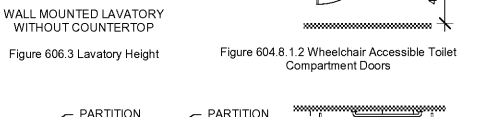


Figure 604.8.1.2 Wheelchair Accessible Toilet Compartment Doors

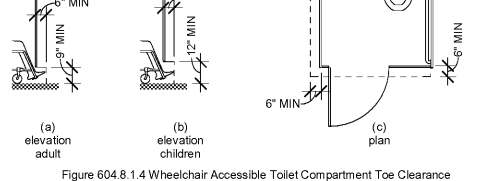


Figure 604.8.1.4 Wheelchair Accessible Toilet Compartment Toe Clearance

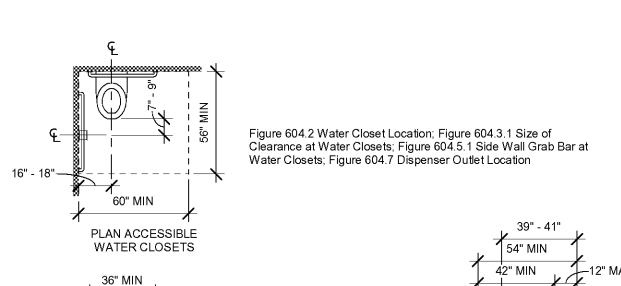


Figure 604.2 Water Closet Location



Figure 604.3.1 Size of Clearance at Water Closets

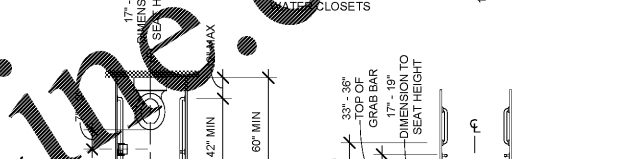


Figure 604.5.1 Side Wall Grab Bar at Water Closets



Figure 604.8.2 Ambulatory Accessible Toilet Compartment

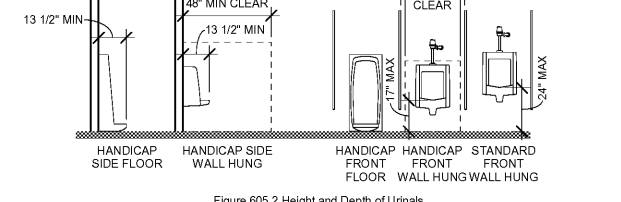


Figure 605.2 Height and Depth of Urinals

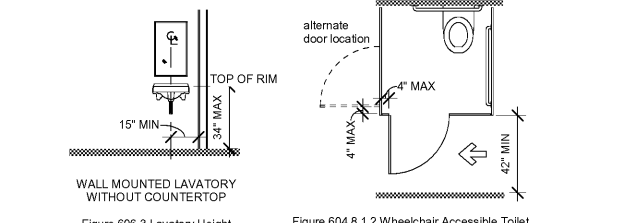


Figure 604.8.1.2 Wheelchair Accessible Toilet Compartment Doors

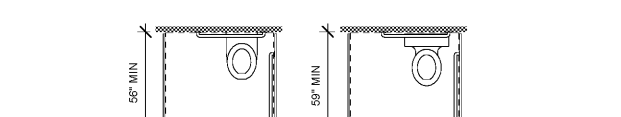


Figure 604.8.1.2 Wheelchair Accessible Toilet Compartment Doors

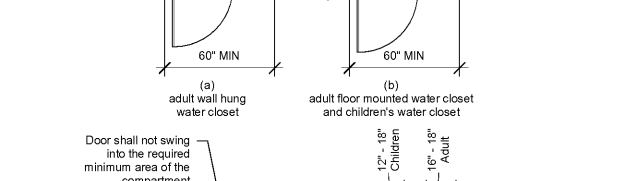


Figure 604.8.1.2 Wheelchair Accessible Toilet Compartment Doors

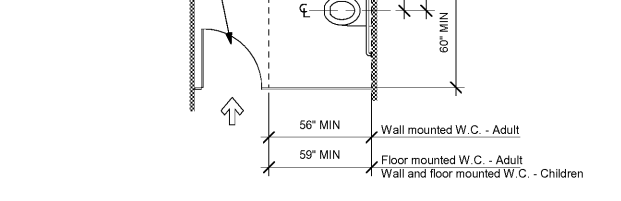


Figure 604.8.1.2 Wheelchair Accessible Toilet Compartment Doors



ISSUE DATES
 INITIAL ISSUE 05-26-20

JOB NO. # DWN Author CKD Checker