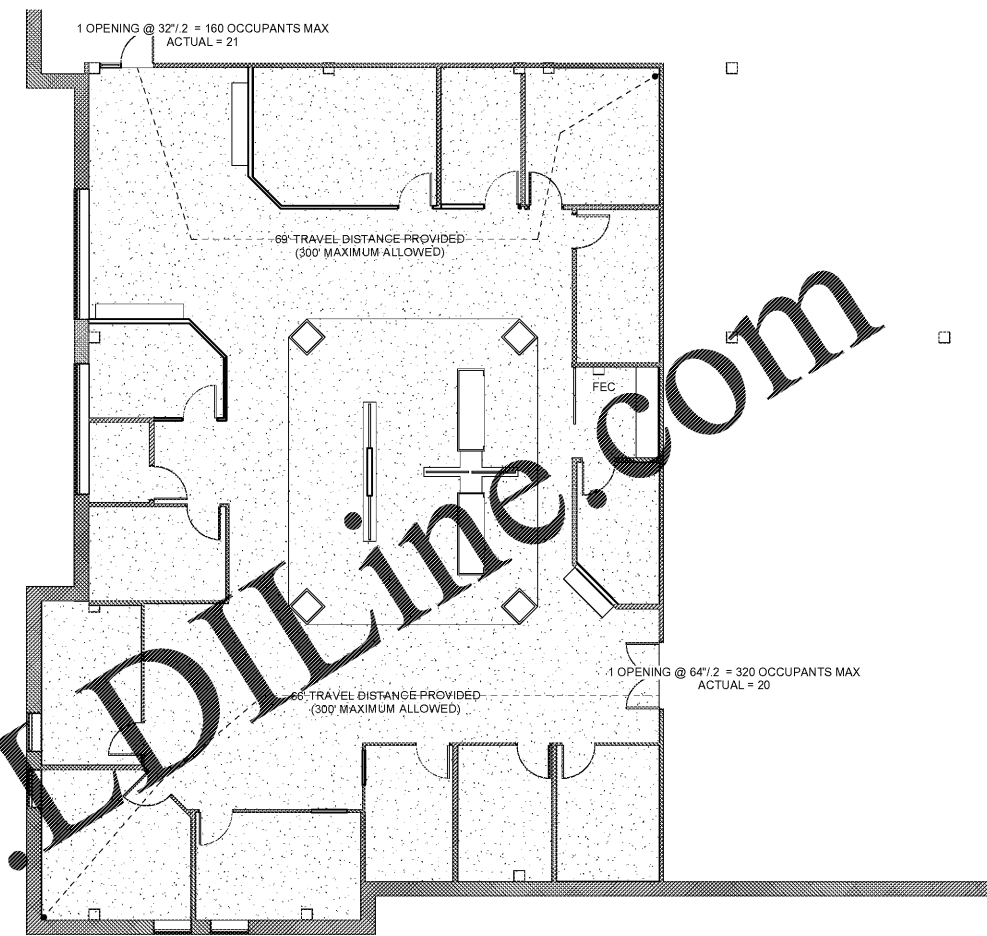
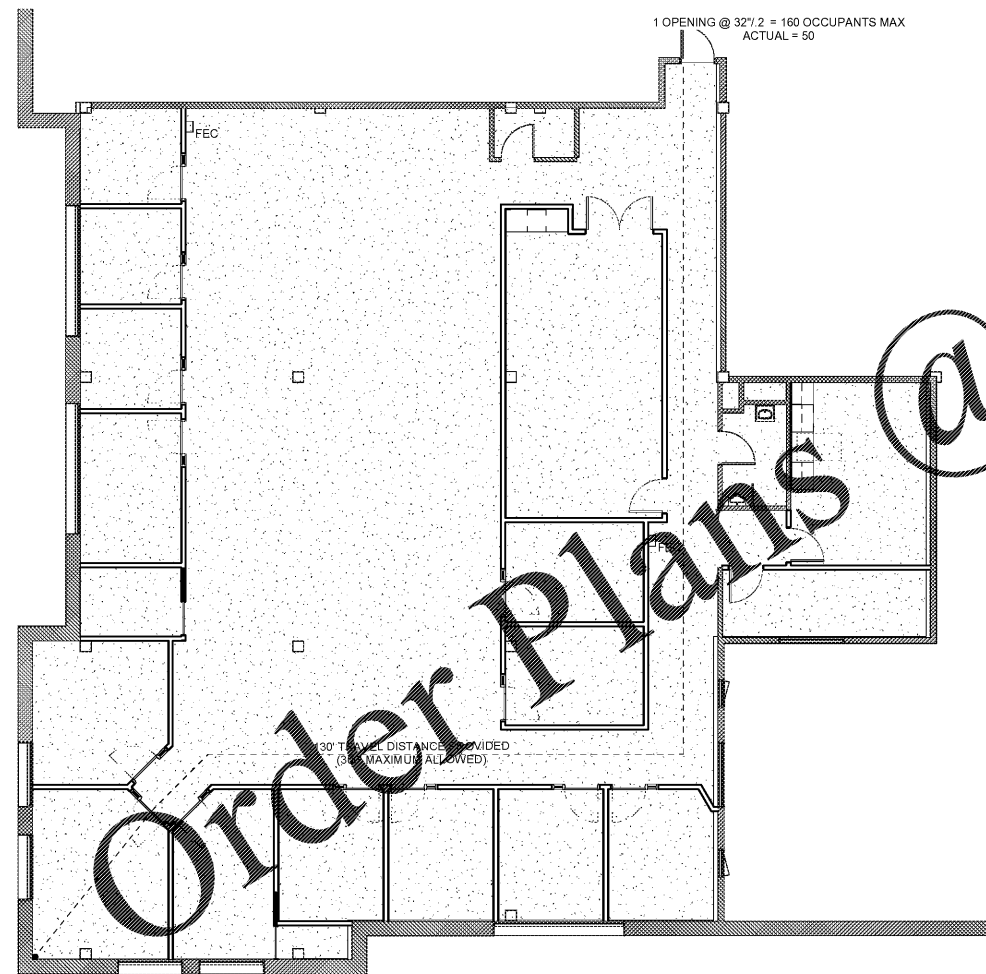


LEGEND FIRST FLOOR	
EXIT WIDTH PROVIDED	→ EGRESS CAPACITY
PERSONS PROVIDED	→ PATH OF TRAVEL
FEC	FIRE EXTINGUISHER CABINET
AREA	
4086 SF BUSINESS @ 1/100 = 41 OCCUPANTS	
TOTAL SUITE OCCUPANCY: 41 OCCUPANTS	
EGRESS	
41 PEOPLE x 0.2 = 8.2" OF EGRESS REQUIRED	
1 DOOR @ 32" = 32"	
1 DOOR @ 64" = 64"	
FOR A TOTAL OF 96" OF EGRESS WIDTH PROVIDED	
BUILDING CODE	
2012 I.B.C.	



1 1ST FLOOR LIFE SAFETY PLAN
SCALE: 1/8" = 1'-0"

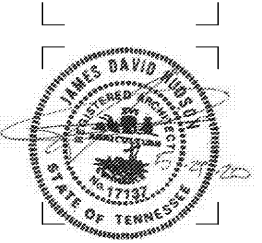


2 2ND FLOOR LIFE SAFETY PLAN
SCALE: 1/8" = 1'-0"

LEGEND SECOND FLOOR	
EXIT WIDTH PROVIDED	→ EGRESS CAPACITY
PERSONS PROVIDED	→ PATH OF TRAVEL
FEC	FIRE EXTINGUISHER CABINET
AREA	
4953 SF BUSINESS @ 1/100 = 50 OCCUPANTS	
TOTAL SUITE OCCUPANCY: 50 OCCUPANTS	
EGRESS	
50 PEOPLE x 0.2 = 9.4" OF EGRESS REQUIRED	
1 DOOR @ 32" = 32"	
FOR A TOTAL OF 32" OF EGRESS WIDTH PROVIDED	
BUILDING CODE	
2012 I.B.C.	

ART TECH
4743 ERZDUMVNDHWH
FKDMDQRQJ/D/HWQ 6:173;
756159817646
2221DUMHFKLSUR

ROCK POINT BANK
401 Chestnut Street Chattanooga Tennessee



ISSUE DATES
INITIAL ISSUE 05-26-20

JOB NO. # | DWN | CKD
Author | Checker
T1.3
LIFE SAFETY PLAN