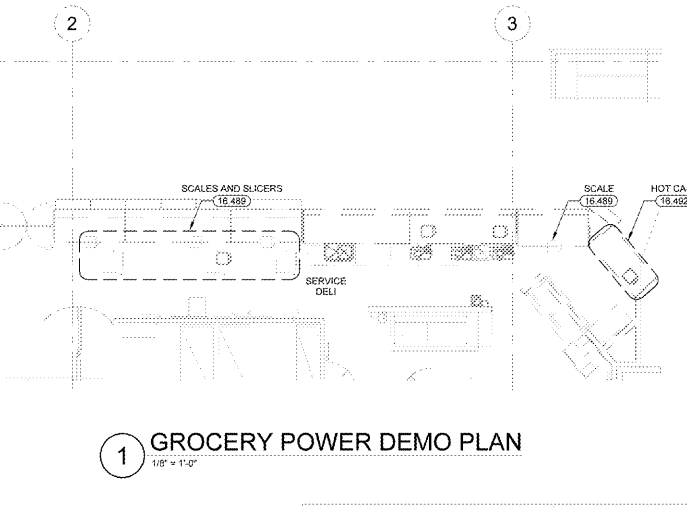
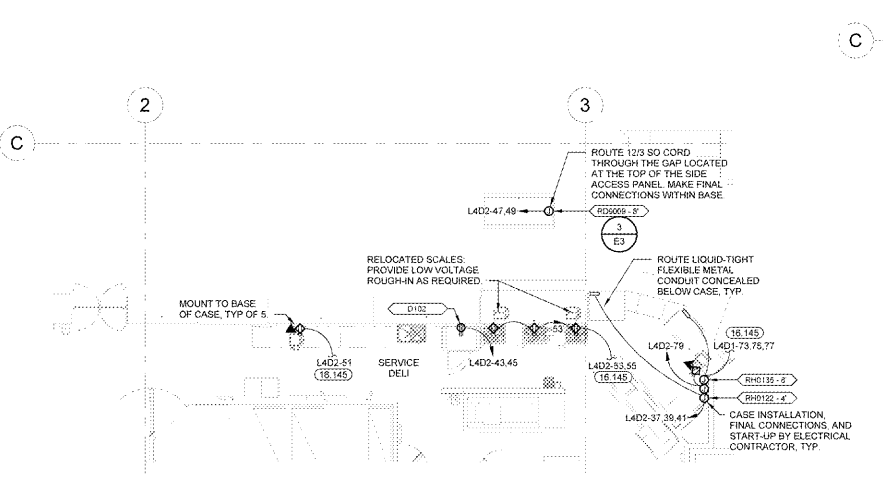
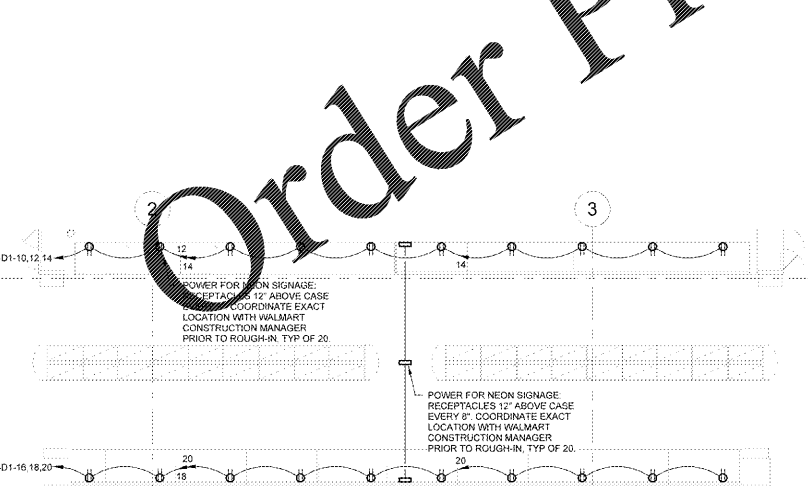
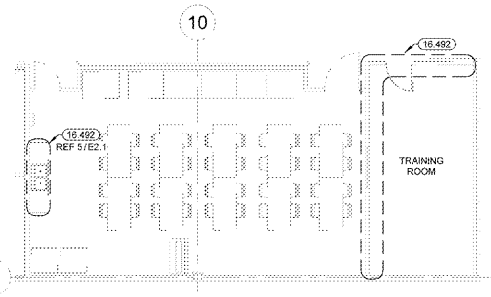
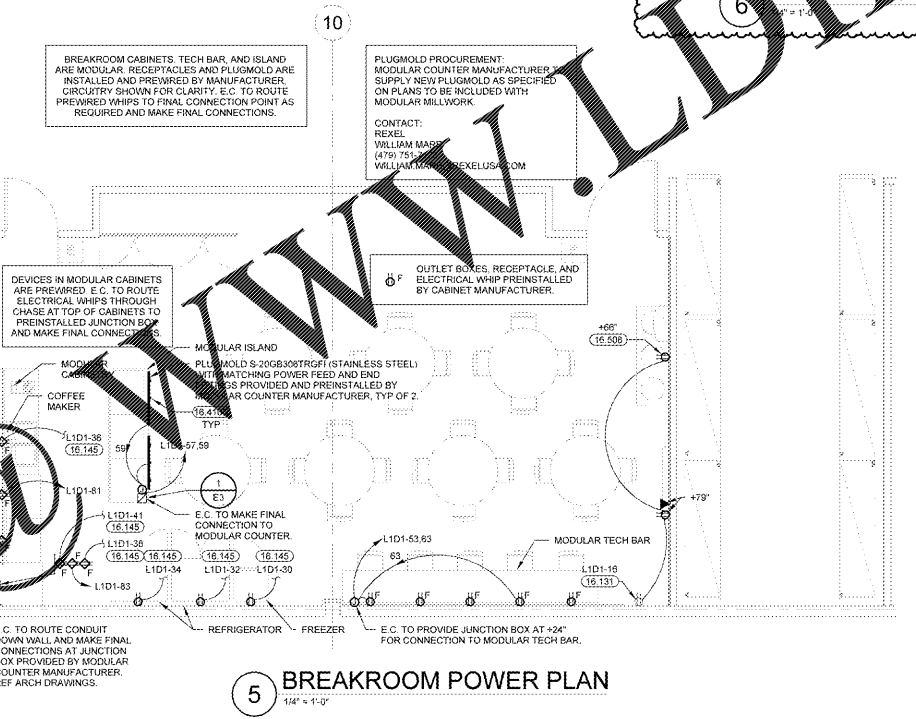
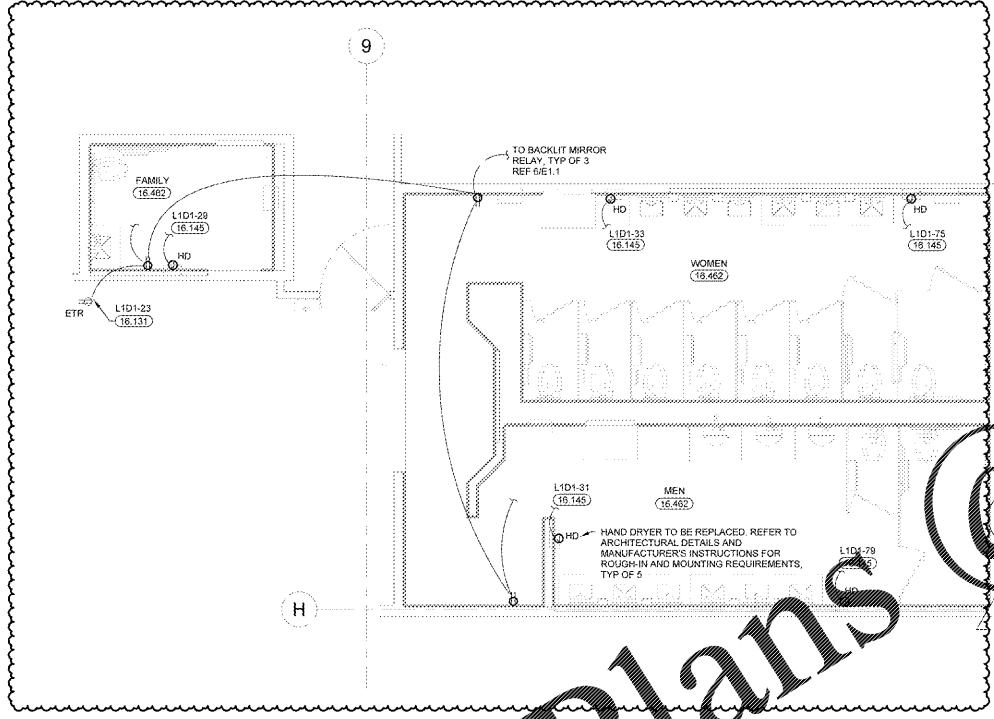
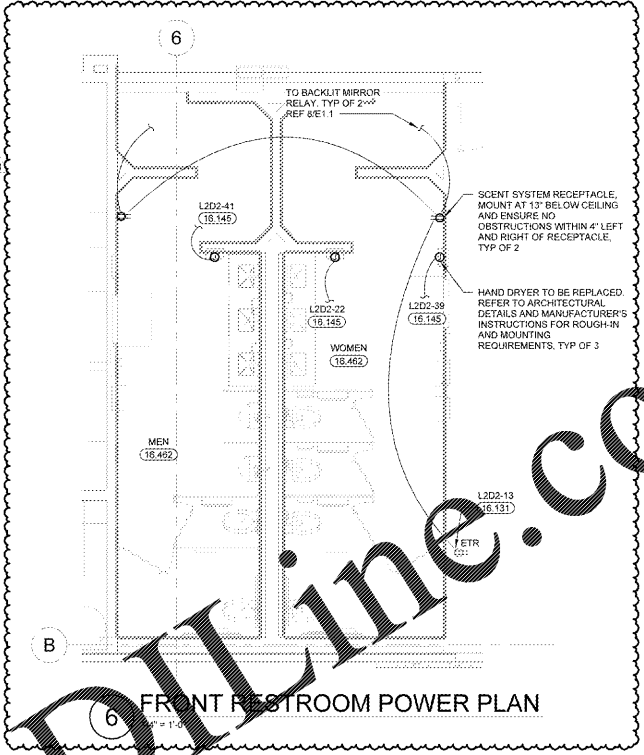


KITCHEN DEVICE SCHEDULE								
NUMBER	DESCRIPTION	MANUFACTURER	MODEL	VOLT/PHASE	AMPS	TERMINATION	MTG. HT.	NOTES
D102	BLAST CHILLER	TRIALSEN	TBC-13	208/120/1	18.00 A	WP. RECEPTACLE NEMA L14-20R	20"	K
REFRIGERATED AND HOT CASE SCHEDULE								
RH0909 - 8'	ISLAND MERCHANDISER	STRUCTURAL CONCEPTS	MI48R	208/1	12.20 A	NEMA 6-20R	10"	C, K
RH102 - 4'	4' HOT DELI SELF-SERVICE MULTI-DECK	CUSTOM DELTS	DLW-SS	120/208/3	10.00 A	WP. JUNCTION BOX	12"	E, F
RH103 - 8'	8' HOT DELI SELF-SERVICE MULTI-DECK	CUSTOM DELTS	DLW-GB-SS	120/208/3	28.00 A	WP. JUNCTION BOX	12"	E, F

A. PROVIDE CORROSION RESISTANT PLUG, CONNECTOR, AND WEATHERPROOF BOOTS. CONNECTOR AND WEATHERBOOTS SHALL BE FROM THE SAME MANUFACTURER.
 B. PROVIDE MATCHING CORD AND MALE PLUG.
 C. WIRING DEVICE ON DROP CORD FROM CEILING. REFER TO SUSPENDED DROP CORD DETAILS.
 D. WIRING DEVICE CIRCUITED TO SHUNT-TRIP BREAKER.
 E. PROVIDE WEATHERTIGHT FLEX CONDUIT AND WIRING FROM DISCONNECT SWITCH OR JUNCTION BOX TO EQUIPMENT KNOCKOUT OR ELECTRICAL CONNECTION POINT.
 F. MAKE FINAL CONNECTIONS TO EQUIPMENT.
 G. PROVIDE CORROSION PROOF PLUGS AND RECEPTACLES FOR EQUIPMENT SPECIFIED ON ELECTRICAL EQUIPMENT SCHEDULE NOTES.
 H. VERIFY EXACT POINT(S) OF CONNECTIONS AND FIELD WIRING REQUIREMENTS WITH EQUIPMENT INSTALLER.
 I. IF NOT FURNISHED WITH EQUIPMENT, FURNISH AND INSTALL 1/2" LONG BLD CORD WITH GROUNDING CONDUCTOR, SIZED AS FOLLOWS:
 5 CONDUCTORS: #8W (2EA), #10W (2EA), #12W (1EA), #14W (1EA) 4 CONDUCTORS: #4 (5EA), #8W (3EA), #10W (2EA), #12W (2EA), #14W (1EA).
 3 CONDUCTORS: #8W (4EA), #10W (3EA), #12W (2EA), #14W (1EA) FURNISH AND INSTALL GROUNDING TYPE ATTACHMENT CAP.
 J. SEE ELECTRICAL SPECIFICATIONS FOR RECEPTACLE, CONNECTOR, AND PLUG INFORMATION. PROVIDE AS REQUIRED.
 K. CORD AND PLUG FURNISHED WITH EQUIPMENT.
 L. FAN CONNECTED THROUGH 120V RELAY, 10A MAX.



- KEYNOTES**
- 16.131 CONNECT TO EXISTING CIRCUIT.
 - 16.145 CONNECT CIRCUITS TO EXISTING BRANCH CIRCUITRY. MINIMUM WIRE SIZE AND PANELBOARD CIRCUIT ARE NOTED. VERIFY SIZE, RATING AND CONDITION OF EXISTING BRANCH CIRCUIT CONDUIT AND WIRE PRIOR TO USE TO ENSURE THAT THEY MEET REQUIRED SIZE AND ALL U.L. RATINGS AND REPLACE AS REQUIRED.
 - 16.4108 COUNTER MOUNTED DEVICES: ROUTE BRANCH CIRCUITRY THROUGH OWNER FURNISHED BLANK POWER POLE. ROUTE FLEXIBLE METAL CONDUITS ALONG INSIDE BACK WALL OF CABINETS.
 - 16.462 ALL ELECTRICAL ITEMS FROM WALLS AND CEILING, INCLUDING HAND DRYERS, RECEPTACLES, SWITCHES, AND LIGHTING FIXTURES AS REQUIRED, INSTALL AND RECONNECT AFTER NEW FINISHES ARE IN PLACE. COORDINATE EXTENT OF WORK WITH GENERAL CONTRACTOR AND WALMART CONSTRUCTION MANAGER.
 - 16.489 EXISTING OFFICE AREA: AND/OR RESTROOMS WILL BE REFINISHED BY OTHERS. REMOVE ALL ELECTRICAL DEVICES FOR RELOCATION OF NEW EQUIPMENT. VERIFY LOCATION OF BRANCH CIRCUITRY, CONDUIT RAYS AND PLACE AS REQUIRED. VERIFY FINISHES WITH WALMART CONSTRUCTION MANAGER PRIOR TO ROUGH-IN.
 - 16.492 SHALL COORDINATE WITH GENERAL CONTRACTOR AND ARCHITECTURAL DEMOLITION. REMOVE UNUSED DEVICES, BOXES, CONDUITS, AND WIRING BACK TO ORIGINATING JUNCTION BOXES OR PANELBOARDS. REFERENCE POWER PLANS FOR CIRCUITRY TO BE REUSED. DEMOLITION SHALL NOT AFFECT ACTIVE CIRCUITS. IF CIRCUIT IS DEMOLISHED ALL THE WAY TO PANELBOARD, REMOVE CIRCUIT BREAKER AND REPLACE WITH FILLER PLATE. UPDATE TYPEWRITTEN CIRCUIT DIRECTORY IDENTIFYING CIRCUIT AS SPACE. COORDINATE EXACT REQUIREMENTS WITH EXISTING CONDITIONS PRIOR TO BID.
 - 16.508 INSECT CONTROL: PROVIDE BROWN DEVICE AND MATCHING COVERPLATE.

STIPULATION FOR REUSE

THE REUSE OF EXISTING ELECTRICAL DEVICES FOR RELOCATION OF NEW EQUIPMENT IS AT THE USER'S RISK. THE USER SHALL VERIFY THE LOCATION AND CONDITION OF EXISTING BRANCH CIRCUITRY, CONDUIT RAYS AND PLACE AS REQUIRED. VERIFY FINISHES WITH WALMART CONSTRUCTION MANAGER PRIOR TO ROUGH-IN.

CONSULTANTS

HENDERSON ENGINEERS
 6545 LEBLANC AVENUE, SUITE 200
 RICHMOND, VA 23234
 TEL: 813.742.2600 FAX: 813.742.2601
 WWW.HENDERSONENGINEERS.COM
 NC: C087500, ELEC: C-1482, NC: EDPRES 836702-03

Walmart

LELAND, NC
 1112 NEW POINT BOULEVARD
 STORE NO. 4273-226
 2865314273 | PHOTO: 195

2020 SPRB

ISSUE BLOCK

1	PR #1	06/15/20
---	-------	----------

CHECKED BY: ESM/M
 DRAWN BY: SBH
 PHOTO CYCLE: 02/28/20
 DOCUMENT DATE: 04/02/20

NOT FOR CONSTRUCTION

ENLARGED POWER PLANS

SHEET: E2.1

Order Plans @ www.LDOnline.com