

EPA CLEAN AIR ACT

COMPLY WITH EPA CLEAN AIR ACT, TITLE VI, SECTION 808 AND CODE OF FEDERAL REGULATION TITLE 40, PART 82 WHEN ADDING OR REMOVING REFRIGERATED EQUIPMENT. RECORD ALL EQUIPMENT IDENTIFICATION NUMBERS, MODEL AND SERIAL NUMBERS, THE AMOUNT OF REFRIGERANT RECOVERED FROM EACH UNIT, THE DATE OF DECOMMISSIONING, COMPANY NAME AND SIGNATURE OF ON-SITE SUPERVISOR.

PIPING SYMBOLS

- MODIFY CIRCUIT
NEW CASE, COIL, CIRCUIT, VALVE, PIPE, OR LENGTH
CHANGE EXISTING PIPE SIZE AS INDICATED
RISER SIZE IS SHOWN EVEN WHERE A RISER IS NOT EXPECTED. THIS IS FOR REFERENCE ONLY AND TO BE USED IN THE EVENT THAT A PIPING CONFLICT CAUSES THE NEED FOR A RISER. IF THE RISER LENGTH EXCEEDS 4 FEET, IT MUST BE APPROVED BY ENGINEER OF RECORD.

KEYNOTES

- 15.601 SLOPE REFRIGERANT LINES FROM THE HIGHEST POINT OF REFRIGERATION LINES TO BELOW BOTTOM OF JOIST RESEAL. PROVIDE INTERMEDIATE SUCCTION LINE TRAP AT THE BASE OF EACH SUCCTION LINE ON 1'-6" X 1'-6" UNISTRUT CHANNELS ON MAXIMUM 10' SPACINGS.
15.602 PROVIDE PVC DRAIN LINE FROM EACH CASE DRAIN CONNECTION SAME SIZE AS CASE OUTLET. END OVER FLOOR RECEPTOR WAIR GAP. PITCH DRAINS 1" PER 10'. PROVIDE DRAIN COVER GRATE TO MATCH EXISTING. CONTRACTOR SHALL ENSURE RECEPTOR(S) AND DRAIN LINE(S) SERVING CASE LINE-UP ARE FREE OF OBSTRUCTIONS AND FUNCTION PROPERLY. WHERE EXTENSIVE DAMAGE EXISTS AND/OR PROPER DRAINAGE CANNOT BE OBTAINED COORDINATE WITH WALMART MECHANICAL CONSTRUCTION MANAGER.
15.612 PROVIDE INTERMEDIATE SUCCTION LINE TRAP IN WALL OR VOID SPACE. INTERMEDIATE TRAP SHOULD BE PLACED AT THE MIDPOINT OF ANY SUCCTION LINE RISE WHICH EXCEEDS 16 FEET.
15.615 UTILIZE EXISTING ROOF OPENING AS INDICATED WHEN POSSIBLE. IF LARGER OPENING IS REQUIRED REMOVE ROOF STRUCTURE AS NECESSARY. CUT THE ROOF FOR THE REFRIGERATION PIPE PENETRATION AND SUPPLY THE PIPE PENETRATION RAIN HOOD, PROPERLY FLASH PATCH, AND REPAIR ROOF AS REQUIRED FOR NEW PENETRATION. SEAL THE ROOF OPENING WITH FOAM AS SOON AS THE PIPING THROUGH THE ROOF OPENING IS COMPLETE.
15.621 REFRIGERATION CONTRACTOR SHALL RECEIVE, SET EQUIPMENT IN PLACE, LEVEL AND START UP OWNER'S SELF-CONTAINED REFRIGERATED EQUIPMENT. INSTALLATION AND START-UP SHALL BE IN STRICT COMPLIANCE WITH THE EQUIPMENT MANUFACTURER'S WRITTEN INSTALLATION AND START-UP INSTRUCTIONS. CONTRACTOR SHALL VERIFY CASE OPERATION AND NOTIFY WALMART MECHANICAL CONSTRUCTION MANAGER IF EQUIPMENT IS NOT OPERATING PROPERLY.
15.623 REFRIGERATION CONTRACTOR SHALL FURNISH AND INSTALL LIQUID LINE SOLENOID VALVE, EVAPORATOR PRESSURE REGULATOR, AND/OR FULL PORT ISOLATION BALL VALVES ON THE COMPRESSOR HOUSE HEADER. REFER TO REFRIGERATION SUBMITTAL SHEET(S) FOR EXACT REQUIREMENTS.
15.625 ROUTE REFRIGERATION LINES IN BASE OF CASE FOR ALL BOTTOM FED CONNECTED CASES. SLOPE BACK TO COMPRESSOR AT 1" PER 20'-0" OF RUN.

GENERAL NOTES

- 1. PLAN INDICATES GENERAL ROUTING OF REFRIGERANT LINES. WITH A SINGLE LINE SHOWN INDICATING BOTH SUCTION AND LIQUID LINE ROUTING FOR EACH SYSTEM.
2. REFRIGERATION SYSTEM INSTALLATION SHALL BE IN COMPLETE COMPLIANCE WITH SPECIFICATIONS, AND WITH ALL REQUIREMENTS OF REFRIGERATION EQUIPMENT MANUFACTURER.
3. REFRIGERATION DRAWINGS ARE PROVIDED AS AN AID TO BIDDERS AND TO INDICATE DESIRED ROUTING OF REFRIGERATION LINES. CONTRACTOR SHALL ASSUME FULL RESPONSIBILITY FOR CORRECT INSTALLATION OF PIPING AND ACCESSORIES TO PROVIDE A COMPLETE AND FULLY OPERATING SYSTEM.
4. REFER TO SPECIFICATION 15600 FOR INSULATION THICKNESS. INSIDE DIAMETER OF INSULATION SHALL MATCH PIPE DIAMETER TO MINIMIZE AIR GAPS BETWEEN PIPING AND INSULATION. PROVIDE FACTORY PRE-MANUFACTURED FITTINGS AT ALL TRAPS AND ELBOWS. WHERE PRE-MANUFACTURED FITTINGS ARE UNAVAILABLE MITER CUT ALL FITTINGS TO ENSURE TIGHT SEAL BETWEEN INSULATION TO ENSURE TIGHT SEAL.
5. PIPE INSTALLATION SHALL MATCH EXISTING COLOR UNLESS NOTED OTHERWISE ON PLANS OR SPECIFICATIONS.
6. REFER TO REFRIGERATION DEMOLITION ISSUES FOR DEMOLITION DRAWINGS. REFER TO ARCHITECTURAL PLANS FOR REFRIGERATION EQUIPMENT DEMOLITION AND COOLER REPAIR AND REMODELING.
7. REFRIGERATION SYSTEM SHALL REMAIN OPERATIONAL DURING REMODELING. DURING THE PHASING OF OLD TO NEW SYSTEMS, BOTH NEW AND OLD REFRIGERATION SYSTEMS MAY BE REQUIRED TO OPERATE AT THE SAME TIME FOR A SHORT PERIOD.
8. WHERE NEW REFRIGERATED EQUIPMENT IS INDICATED ON THE DRAWINGS, PROVIDE DEMOLITION, REMOVAL, AND TEMPORARY STORAGE OF OLD EQUIPMENT PER OWNER'S MECHANICAL SERVICES CONSTRUCTION MANAGER'S INSTRUCTIONS, AND REFRIGERATION DEMO NOTES.
9. COORDINATE REMOVAL AND DISPOSAL OF EXISTING EVAPORATORS, REFRIGERATED CASES, AND CONDENSING UNITS, WITH OWNER'S MECHANICAL SERVICES CONSTRUCTION MANAGER.
10. REMOVE COPPER LINES, EVAPORATORS, AND CONDENSATE LINES FROM COOLERS/ FREEZERS BEING REMOVED FROM SITE. COORDINATE WITH WALK-IN PANEL VENDOR FOR TIME LINE OF REPLACEMENT. REFERENCE SPECIFICATION FOR CONTACT INFORMATION.
11. WALK-IN PANEL VENDOR SHALL PROPERLY PREPARE ALL COOLER/FREEZER PANELS, GLASS DOORS, SLIDER OR SWING DOORS, PALLETIZE, AND PREPARE THE EQUIPMENT TO SHIP OFF SITE.
12. COORDINATE WITH FIRE PROTECTION CONTRACTOR FOR THE REMOVAL OF SPRINKLERS FOR ALL REMOVED COOLER/FREEZER BOXES.
13. COORDINATE WITH ELECTRICAL CONTRACTOR FOR THE REMOVAL OF ALL REMOVED COOLER/FREEZER BOXES ELECTRICAL WIRING DEVICES.
14. COORDINATE WITH EMS CONTRACTOR FOR THE REMOVAL OF ALL REMOVED COOLER/FREEZER BOXES EMS WIRING AND DEVICES.
15. EXISTING REFRIGERATION PIPING MAY BE RE-USED UNLESS OTHERWISE NOTED ON PLANS. REFER TO SCHEDULES FOR PIPE SIZE REQUIREMENTS.
16. BUILDING COMPONENTS ABANDONED BY THE SCOPE OF WORK SHALL BE SECURED TO PREVENT FALLING, LOOSENING, OR CREATING DAMAGE OF ANY KIND IN THE FUTURE.
17. IF ANY RACK SYSTEMS WILL BE OPENED TO ADD OR REPLACE CASES, EVAPORATORS, ETC. THEN 24 TO 48 HOURS AFTER THE WORK IS COMPLETED AND ALL FINAL ADJUSTMENTS HAVE BEEN MADE, PROVIDE AND CHANGE LIQUID LINE FILTER CORES, OIL SYSTEM FILTER USING SPOPLAN OF STYLE FILTER, AND REPLACE SUCCTION FILTERS. FILTERS ARE TO BE RATED FOR WAX REMOVAL. CONTRACTOR TO PROPERLY DISPOSE OF OIL AND COMPONENTS REPLACED. REFER TO SPECIFICATION 15600.
18. REFER TO GROCERY ARCHITECTURAL DRAWINGS FOR ADDITIONAL WORK BY REFRIGERATION CONTRACTOR.
19. COMPLETE ASSET TAGGING PROCESS FOR ALL NEW REFRIGERATED CASES. REFER TO SPECIFICATIONS.

REFRIGERATION SYMBOLS

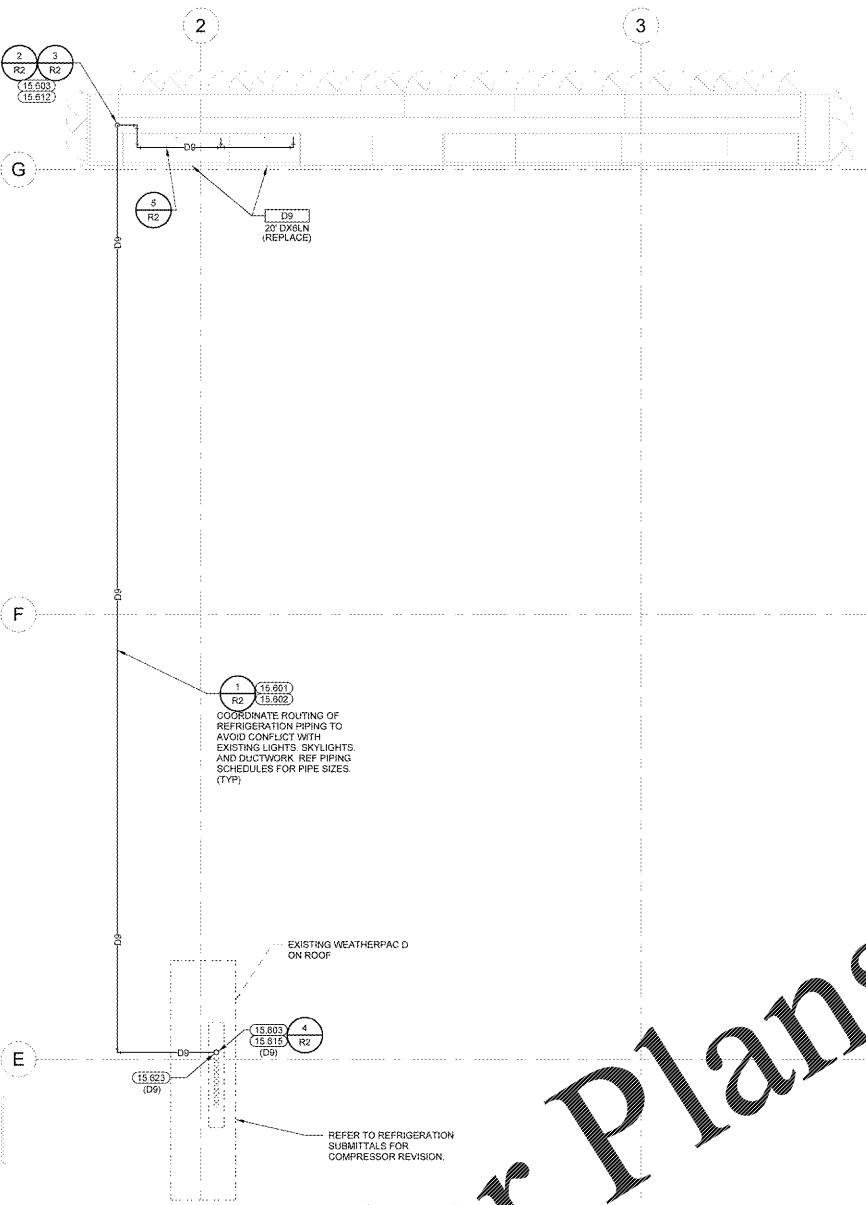
- CIRCUIT NUMBER (CIRCUIT INF)
MODEL NUMBER
CLEANOUT (CO)
CONDENSATE DRAIN LINE (CD)
CONNECT TO EXISTING
CONTINUATION
DETAIL NUMBER (DETAIL REFERENCE)
SHEET NUMBER
EVAPORATOR COIL
ISOLATION VALVE
ELBOW - TURNED DOWN
ELBOW - TURNED UP
REFRIGERATION KEYNOTE REFERENCE
REFRIGERATION PIPING (ABOVE)
REFRIGERATION PIPING (BELOW)
REFRIG PIPING CASE CONNECTION
EXISTING TO REMAIN
TYPICAL

PIPING SCHEDULE SYSTEM MTD

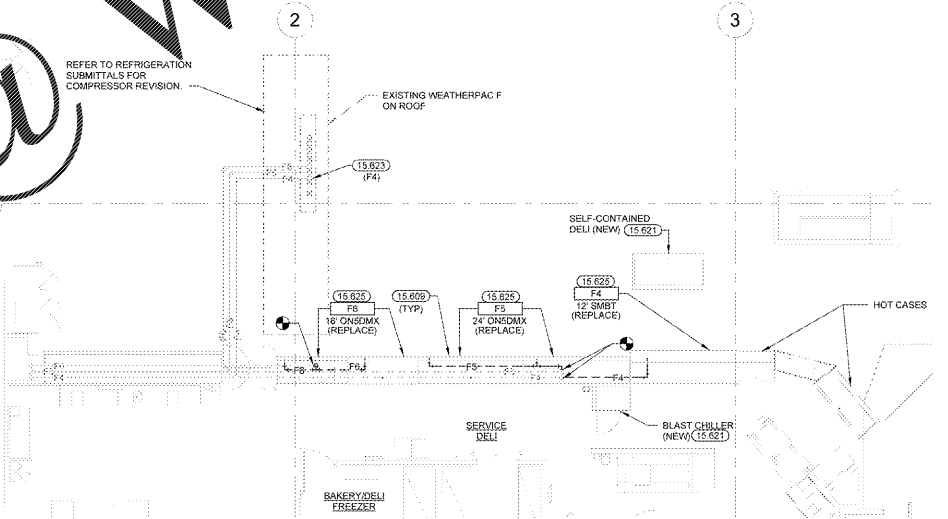
Table with 5 columns: PIPE DESIGNATION, HORIZONTAL SUCTION, VERTICAL SUCTION RISER AS REQUIRED, LIQUID, ESTIMATED TOTAL LENGTH. Includes notes on riser size and estimated length.

PIPING SCHEDULE SYSTEM MTF

Table with 5 columns: PIPE DESIGNATION, HORIZONTAL SUCTION, VERTICAL SUCTION RISER AS REQUIRED, LIQUID, ESTIMATED TOTAL LENGTH. Includes notes on riser size and estimated length.



2 REAR REFRIGERATION PLAN



1 FRONT REFRIGERATION PLAN

Order Plans

WWW.DIline.com

EXISTING CONDITIONS WERE TAKEN FROM ORIGINAL DRAWINGS AND MAY NOT REFLECT EXACT 'AS-BUILT' CONDITIONS. CONTRACTOR SHALL FIELD VERIFY ALL EXISTING CONDITIONS PRIOR TO SUBMITTING FINAL DRAWINGS. CONTRACTOR SHALL CAREFULLY COORDINATE NEW WORK AND DEMOLITION WITH ALL OTHER DISCIPLINES AND EXISTING CONDITIONS.

EACH SUBCONTRACTOR IS RESPONSIBLE FOR HAVING A THOROUGH KNOWLEDGE OF ALL DRAWINGS AND SPECIFICATIONS IN THEIR RELATED FIELD. THE FAILURE TO ACQUAINT THEMSELVES WITH THIS KNOWLEDGE DOES NOT RELIEVE THE RESPONSIBILITY OF PERFORMANCE. THE WORK PROPERLY. NO ADDITIONAL COMPENSATION SHALL BE ALLOWED BECAUSE OF CONDITIONS THAT OCCUR DUE TO FAILURE TO FAMILIARIZE WORKERS WITH THIS KNOWLEDGE.

CONSULTANTS FOR REUSE
HENDERSON ENGINEERS

HENDERSON ENGINEERS
6545 LEBLANC AVENUE, SUITE 200
TEL 913.752.2000 FAX 913.752.2001

Walmart
LELAND NC
1112 NEW POINT BOULEVARD
STORE NO. 4273-266

ISSUE BLOCK table with columns for issue number and description.

CHECKED BY: AB
DRAWN BY: CRA
PROTO CYCLE: 02/28/20
DOCUMENT DATE: 04/08/20

NOT FOR CONSTRUCTION

REFRIGERATION PLAN

SHEET: R1