

| REFRIGERATED CASE LEGEND | | | | | | |
|--------------------------|-----|----------------------|----------------------|-----------|-------------------------------|-----------------|
| MDS NO. | QTY | SIZE LENGTH DOOR NO. | DESCRIPTION | REFR FEED | MFR OR SUPPLIER | MODEL NO. NOTES |
| RD2006.642 | 1 | 12FT | SERVICE | B | HUSSMANN CORPORATION | SMRT 6 |
| RD4018.442 | 1 | 8FT | MULTI-DECK | T | KYSORWARREN | DXLNJ 5 |
| RD4018.442 | 1 | 12FT | MULTI-DECK | T | KYSORWARREN | DXLNJ 5 |
| RD4043.042 | 2 | 8FT | MULTI-DECK | B | HILL PHOENIX, INC. | ONSDMX-NRG 5 |
| RD4043.042 | 2 | 12FT | MULTI-DECK | B | HILL PHOENIX, INC. | ONSDMX-NRG 5 |
| RD9009.005 | 1 | 8FT | SINGLE DECK ISLAND | B | STRUCTURAL CONCEPTS CORP. | NIR 5 |
| RH0122.000 | 1 | 4FT | SELF-SERVICE | N/A | CUSTOM DELIS EQUIPMENT CO INC | DILW-SS 5 |
| RH0136.000 | 1 | 8FT | SERVICE SELF-SERVICE | N/A | CUSTOM DELIS EQUIPMENT CO INC | LWCB-SS 5, 16 |

| WEDGE EQUIPMENT LEGEND | | | | | | |
|------------------------|-----|-----------------------------|------------------------|-----------|-------|--|
| MDS NO. | QTY | DESCRIPTION | MFR OR SUPPLIER | MODEL NO. | NOTES | |
| W500 | 2 | 18 X 34 WEDGE | QUALSERV SOLUTIONS LLC | WMDW18AN3 | | |
| W507 | 1 | 36" PREBUILT WEDGE ASSEMBLY | QUALSERV SOLUTIONS LLC | WMDW36S5T | | |

GENERAL WEDGE NOTES:
 A. G2 FURNISHED AND INSTALLED.
 B. SIDE SCRIBE PIECES PROVIDED WITH WEDGE. FIELD CUT TO FIT.
 C. WEDGE TOP PIECE PROVIDED WITH WEDGE. FIELD CUT TO FIT.

GROCERY DRY WEDGE KIT CONTACT:
 QUALSERV
 (479) 845-8386 x310 ATTN: DION CHAMBERS
 TWO WEEK MINIMUM LEAD TIME

| MISC. GROCERY EQUIPMENT LEGEND | | | | | | |
|--------------------------------|-----|---------------|-----------------|-----------|-------|--|
| MDS NO. | QTY | DESCRIPTION | MFR OR SUPPLIER | MODEL NO. | NOTES | |
| M0323 | 1 | SCALE LABELER | | | | |

| SERVICE DELI EQUIPMENT SCHEDULE | | | | | | |
|---------------------------------|-----|---------------|-----------------|-----------|-------|--|
| MDS NO. | QTY | DESCRIPTION | MFR OR SUPPLIER | MODEL NO. | NOTES | |
| D102 | 1 | BLAST CHILLER | | | | |

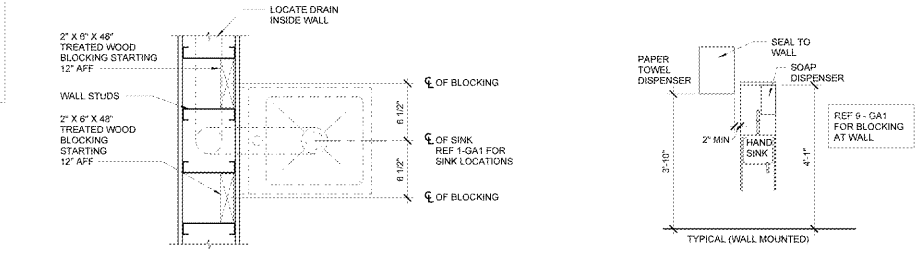
| STAINLESS STEEL EQUIPMENT LEGEND | | | | | | |
|----------------------------------|-----|--------------------------------------|-----------------|-----------|-------|--|
| MDS NO. | QTY | DESCRIPTION | MFR OR SUPPLIER | MODEL NO. | NOTES | |
| SS094 | 2 | HAND SINK 18X14 (14X16) WALL MOUNTED | | | | |

EQUIPMENT NOTES
 1. REFERENCE SHEETS GA1 FOR EQUIPMENT LOCATION FINISHES FOR OWNER SUPPLIED EQUIPMENT ARE SPECIFIED PER BID ALIGNMENT BETWEEN OWNER AND OEM BY EQUIPMENT SUPPLIER.
 11. RETROFIT DOORSLIDS PROVIDED BY OWNER AND INSTALLED BY EQUIPMENT SUPPLIER.
 16. SCALE STAND FURNISHED BY OEM AND INSTALLED BY GC.

GENERAL EQUIPMENT NOTES
 A. ALL EQUIPMENT IS SUPPLIED BY OWNER. INSTALLED BY THE GENERAL CONTRACTOR. GENERAL CONTRACTOR TO MAKE FINAL UTILITY CONNECTIONS, UNLESS OTHERWISE NOTED. REFERENCE SPECIFICATIONS FOR REFRIGERATED AND HOT DISPLAY CASES FOR SUPPLIER BY, INSTALLED BY, AND FINAL CONNECT BY.
 B. REFERENCE SPEC APPENDIX A FOR MANUFACTURER AND MODEL NUMBERS NOT LISTED IN EQUIPMENT LEGENDS.
 C. OWNER TO SUPPLY SS FIXTURES BY WIN-HOLT.

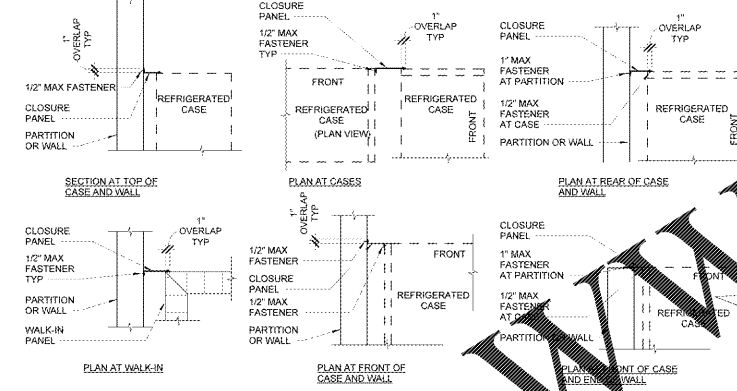
SHEET NOTES

- STUD WALL DIMENSIONS ARE TO THE FACE OF THE STUDS.
- ROUTE ALL UTILITY SERVICE LINES (PIPES AND CONDUIT) WITHIN STUD WALLS WHEREVER POSSIBLE. ON COOLER/FREEZER PANELS IN FOOD PREP AREAS WHERE UTILITIES MUST BE EXPOSED, CONTRACTOR TO HAVE THE OPTION OF THE FOLLOWING:
 - SURFACE MOUNT UTILITIES WITH NON-CORROSIVE ANCHORS. SEAL BOTH SIDES OF PIPE/CONDUIT TO PANEL CONTINUOUSLY WITH SEALANT.
 - INSTALL UTILITIES 1/2" OFF FACE OF PANEL TO ALLOW FOR CLEANING. USE ONLY NON-CORROSIVE MATERIALS FOR COVER UTILITIES WITH 20 GAUGE STAINLESS STEEL BENT PLATES MOUNTED TO WALL WITH NON-CORROSIVE ANCHORS. APPLY CONTINUOUS SEALANT ALONG EDGES AND JOINTS.
 - PROPER INSTALLATION OF JOINT SEALANTS IS CRITICAL TO MEETING WALMART QUALITY ASSURANCE STANDARDS. PROVIDE SEALANTS IN ACCORDANCE WITH DRAWINGS AND SPECIFICATIONS. REFERENCE SECTION 0700 FOR SEALANT SCHEDULE.
 - ALL JOINTS BETWEEN DISSIMILAR MATERIALS SHALL BE SEALED AS REQUIRED FOR A COMPLETE AND PROPER INSTALLATION. REGARDLESS OF WHETHER SHOWN ON THE DRAWINGS OR INDICATED IN THE SPECIFICATIONS. SUCH JOINTS NOT SHOWN OR SCHEDULED SHALL BE SEALED WITH SEALANTS AS RECOMMENDED BY THE MANUFACTURER FOR THE SPECIFIC APPLICATION.
- INTERIOR SEALANTS USED IN FOOD PREPARATION AREAS SHALL MEET THE REQUIREMENTS FOR USE IN USDA REGULATED FACILITIES.
- PROVIDE STEEL CLOSURE PANELS AT ALL VERTICAL GAPS AND HORIZONTAL GAPS 52" OR LOWER BETWEEN REFRIGERATED CASES, WALLS AND/OR EQUIPMENT. REF E - GA1.
- COORDINATE REMOVAL AND DISPOSAL OF EXISTING REFRIGERATED CASES AND FIXTURES WITH MECHANICAL SERVICES CONSTRUCTION MANAGER. COORDINATE REMOVAL AND DISPOSAL OF EXISTING REFRIGERATED CASES AND FIXTURES WITH INSTALLATION OF NEW REFRIGERATED CASES AND FIXTURES EXISTING REACH-IN FROZEN CASES TO BE RELOCATED OR REMOVED SHALL BE USED ON A TEMPORARY BASIS DURING CONSTRUCTION OF NON-SERVICE SEAFOOD AREA. TEMPORARY CASES SHALL BE REMOVED ONCE THE NEW CASES ARE DELIVERED AND OPERATIONAL. DIMENSIONS OF REFRIGERATED CASES ARE TO THE OUTERMOST POINTS OF THE CASES. ENDCAPS AND BUMPERS ARE CONSIDERED PART OF THE CASE, WHERE THEY OCCUR. DIMENSIONS ON THE FIXTURE PLANS ARE FOR LAYOUT AND OWNER-FURNISHED ITEMS ONLY AND ARE NOT TO BE USED FOR LOCATION OF WALLS AND OTHER CONTRACTOR-BUILT ITEMS.
- ALL NEW (NON-MOVEABLE) EQUIPMENT INCLUDING SINKS, OVENS, AND REFRIGERATED EQUIPMENT SHALL BE SEALED TO THE WALLS. BASE OR LEGS SHALL BE SET IN A BED OF SEALANT WITH EXCESS REMOVED. MOVEABLE EQUIPMENT SHALL NOT BE SEALED.
- RE-SKINNING OF EXISTING CASES TO REMAIN UNDER SEPARATE CONTRACT.
- NOT USED.
- VERIFY EXACT LOCATION OF CASES WITH WALMART AND CM PRIOR TO STARTING CONSTRUCTION.

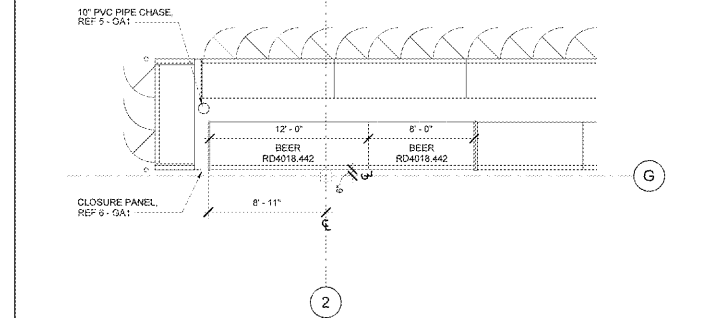


9 BLOCKING AT WALL MOUNTED HAND SINK 1 1/2" = 1'-0"
 8 HAND SINK ELEVATION 1/2" = 1'-0"

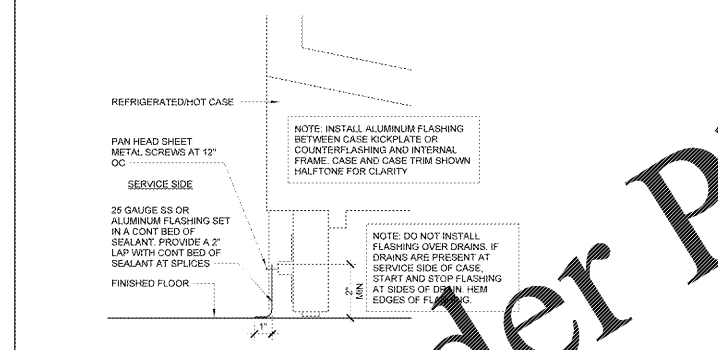
- NOTES:
 1. REFRIGERATION CONTRACTOR TO PROVIDE GALVANIZED CLOSURE PANELS AT ALL VERTICAL GAPS AND AT ALL HORIZONTAL GAPS 52" OR LOWER AFF BETWEEN REFRIGERATED CASE WALLS, AND/OR EQUIPMENT.
 2. PROVIDE STAINLESS STEEL CLOSURE PANELS LOCATED IN PREP AREAS.
 3. REF FLOOR PLANS FOR ALL PARTITION TYPES AND LOCATIONS.
 4. CASE EXPOSED EDGES TO SMALL UNIFORM RADIUS.
 5. SET CLOSURE PANEL IN A BED OF SEALANT EACH SIDE.
 6. FASTEN CLOSURE PANELS WITH #8 PAN HEAD SCREWS AT 9" OC.
 7. CLOSURE PANELS TO BE FASTENED ONLY TO THE BACK OF THE REFRIGERATED CASE OR END PANEL SKINS AS INDICATED IN THE DRAWINGS.



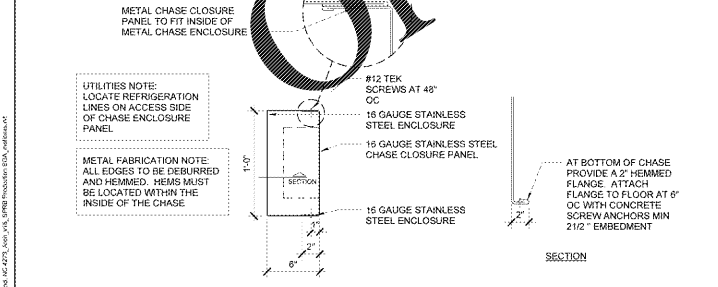
6 CLOSURE PANEL DETAIL 3/4" = 1'-0"
 5 PVC REFRIGERATION CHASE 1/2" = 1'-0"



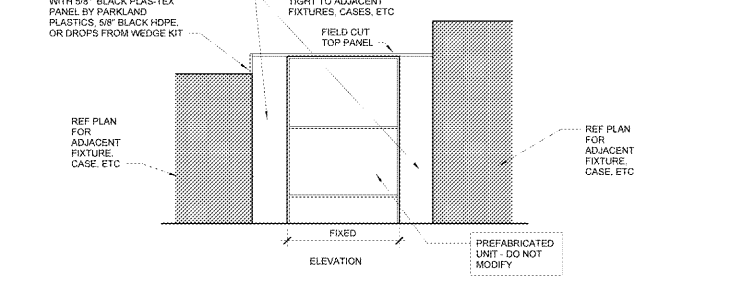
7 ENLARGED GROCERY FLOOR PLAN 3/16" = 1'-0"



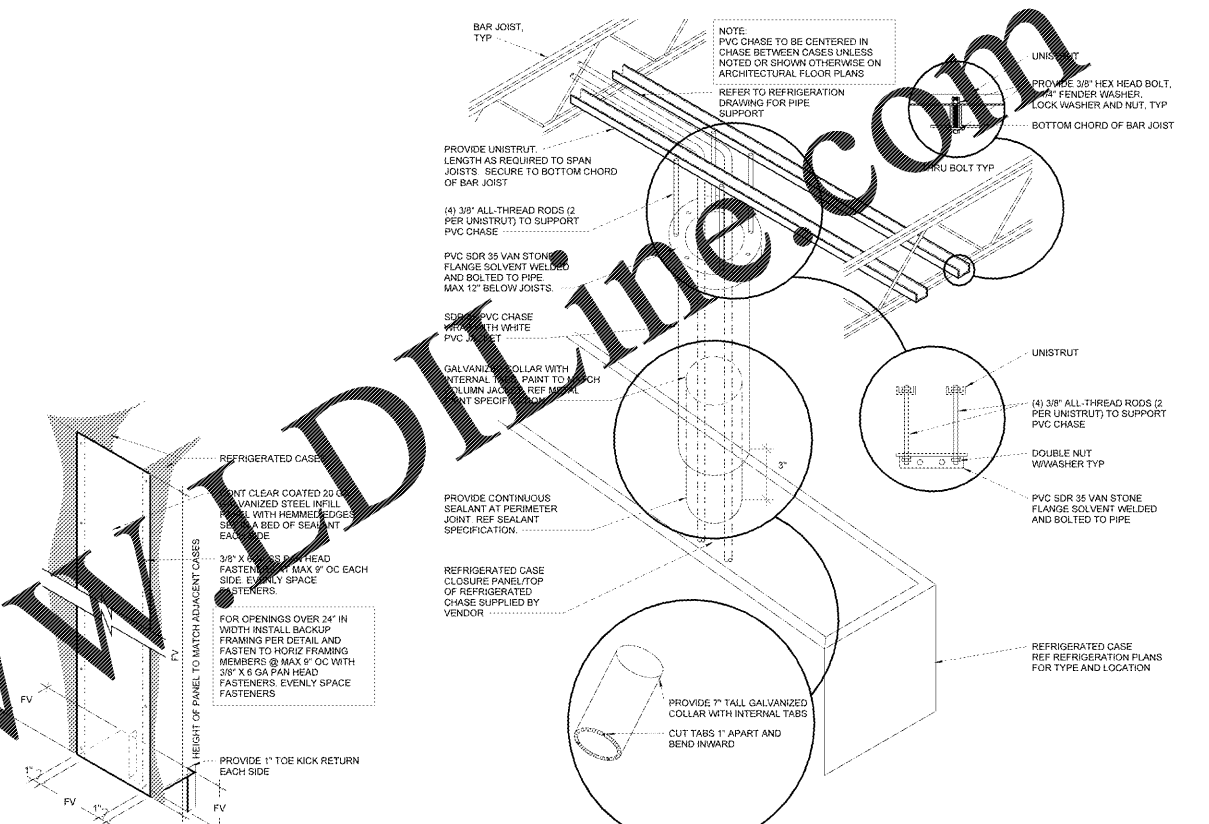
4 CASE FLASHING AT SERVICE DELI 3" = 1'-0"



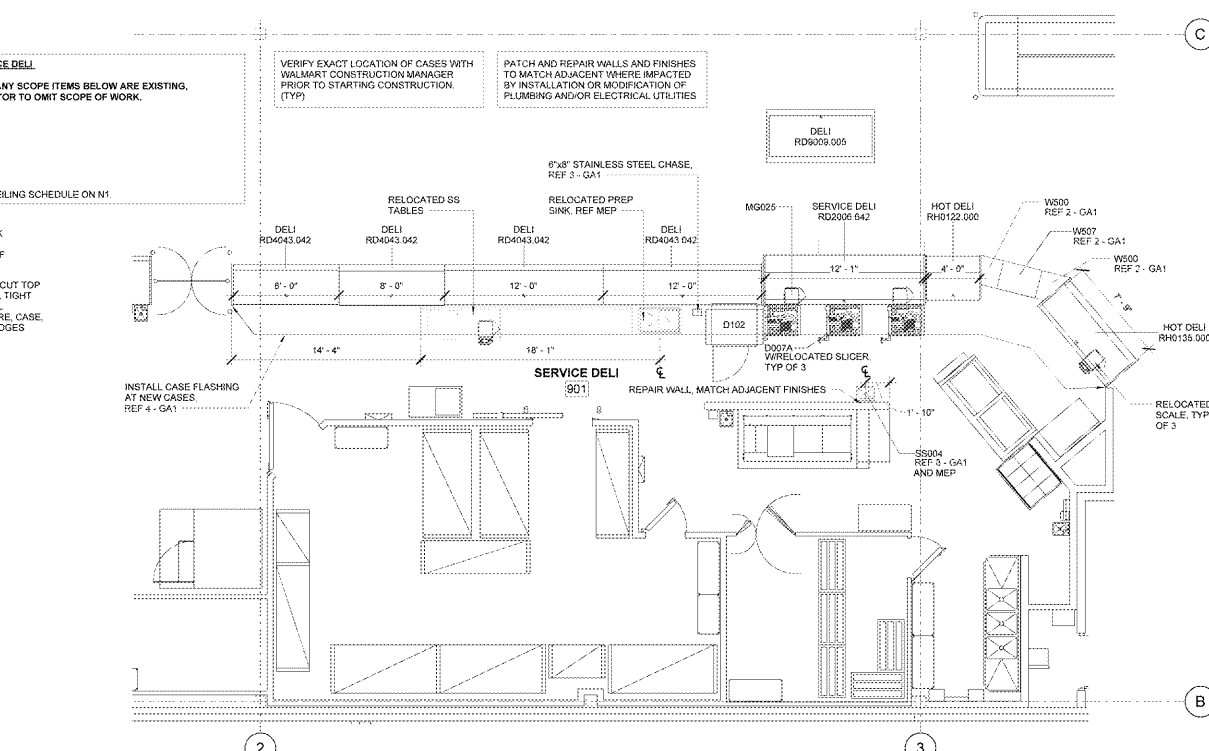
3 STAINLESS STEEL CHASE AT DELI 1 1/2" = 1'-0"



2 WEDGE KIT 3/4" = 1'-0"



1 ENLARGED GROCERY FLOOR PLAN 3/16" = 1'-0"



1 ENLARGED GROCERY FLOOR PLAN 3/16" = 1'-0"

SGA Design Group, P.C.
 1437 South Boulder, Suite 550
 Littleton, Colorado 80120
 T: 303.751.8601
 F: 303.751.8601
 www.sgaaltdesign.com

STIPULATION FOR REUSE
 THIS DRAWING AND ALL INFORMATION CONTAINED HEREIN IS THE PROPERTY OF SGA DESIGN GROUP, P.C. AND IS TO BE USED ONLY FOR THE PROJECT AND SITE SPECIFICALLY IDENTIFIED HEREIN. IT IS NOT TO BE REPRODUCED, COPIED, REUSED, OR TRANSMITTED IN ANY FORM OR BY ANY MEANS, ELECTRONIC OR MECHANICAL, INCLUDING PHOTOCOPYING, RECORDING, OR BY ANY INFORMATION STORAGE AND RETRIEVAL SYSTEM, WITHOUT THE WRITTEN PERMISSION OF SGA DESIGN GROUP, P.C.

Walmart
 LELAND, NC
 1112 NEW POINT BOULEVARD
 STORE NO. 4273-256
 2020 SPRB

ISSUE BLOCK

| NO. | DATE | DESCRIPTION |
|-----|------|-------------|
| | | |
| | | |
| | | |

CHECKED BY: ROAMT
 DRAWN BY: MS
 PHOTO CYCLE: 02/28/20
 DOCUMENT DATE: 04/08/20

THE REDDING COPY OF THIS DRAWING IS VALID AT THE OFFICE OF SGA DESIGN GROUP. THIS ELECTRONIC DOCUMENT IS PROVIDED FOR THE PURPOSE OF CONVENIENCE. COPIES OF THIS DRAWING SHALL NOT BE CONSIDERED VALID UNLESS THEY ARE SIGNED AND SEALED BY THE REGISTERED PROFESSIONAL ENGINEER.

GROCERY PLAN
 SHEET: GA1