

INSECT CONTROL UNIT LEGEND

FINAL NUMBER OF UNITS RECEIVED IS DETERMINED BY THE WALMART FOOD SAFETY & HEALTH PEST MANAGEMENT AND PEST ELIMINATION SERVICES PROVIDER.

TYPE	TOTAL	D
D	1	

NOTES:

- ALL UNITS TO BE INSTALLED BY THE PEST ELIMINATION SERVICES PROVIDER.
- UNITS ARE NOT TO BE INSTALLED ABOVE ANY FOOD SERVICE/PEP EQUIPMENT.
- UNITS ARE TO BE INSTALLED (INDICATED WITH BROWN RECEPTACLES AND COVERS) AS INSTRUCTED WITHIN THE CONSTRUCTION DOCUMENTS, REFERENCE ARCHITECTURAL AND ELECTRICAL DRAWINGS FOR PROPER LOCATION.

KEYNOTES

- 6.27 48" HIGH WAINSCOT WITH OUTSIDE CORNER TRIM
- 10.44 PROVIDE TACTILE "EXIT" SIGN, REF N1.
- 16.05 INSTALL INSECT CONTROL UNIT TYPE NOTED BESIDES UNIT.

SHEET NOTES

- 1 REF N1 FOR FINISH KEY

STIPULATION FOR REUSE
 THE DRAWING AND ALL INFORMATION THEREON IS TO BE USED ONLY FOR THE PROJECT AND SITE SPECIFICALLY IDENTIFIED THEREON. IT IS NOT TO BE REPRODUCED, COPIED, REPRINTED, OR TRANSMITTED IN ANY FORM OR BY ANY MEANS, ELECTRONIC OR MECHANICAL, INCLUDING PHOTOCOPYING, RECORDING, OR BY ANY INFORMATION STORAGE AND RETRIEVAL SYSTEM, WITHOUT THE WRITTEN PERMISSION OF SGA DESIGN GROUP, P.C.

CONSULTANTS

ISSUE BLOCK

NO.	DESCRIPTION	DATE

CHECKED BY: RO/AVT
DRAWN BY: KM
PROTO CYCLE: 02/28/20
DOCUMENT DATE: 04/08/20

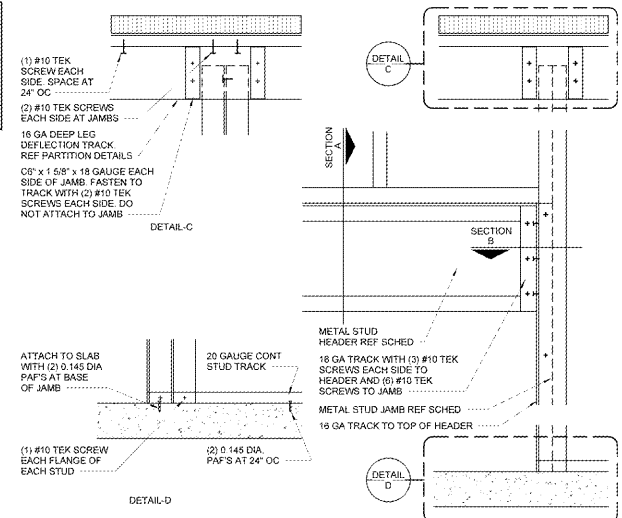
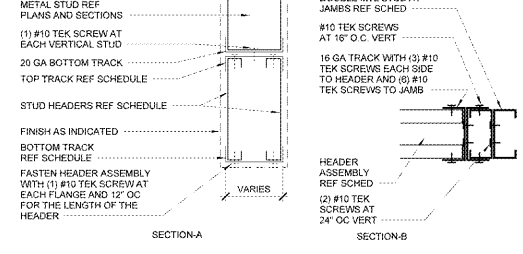
THE RECORD COPY OF THIS DRAWING IS TO BE KEPT AT THE OFFICE OF SGA DESIGN GROUP. THIS ELECTRONIC DOCUMENT IS PROVIDED FOR THE PURPOSE OF PROVIDING COORDINATION AND CHECKS ONLY. IT IS NOT TO BE USED FOR CONSTRUCTION. THIS DRAWING SHALL NOT BE REPRODUCED OR TRANSMITTED IN ANY FORM OR BY ANY MEANS, ELECTRONIC OR MECHANICAL, INCLUDING PHOTOCOPYING, RECORDING, OR BY ANY INFORMATION STORAGE AND RETRIEVAL SYSTEM, WITHOUT THE WRITTEN PERMISSION OF SGA DESIGN GROUP, P.C.

BREAKROOM PLAN AND DETAILS

INTERIOR NON-LOAD BEARING PARTITION HEADER SCHEDULE

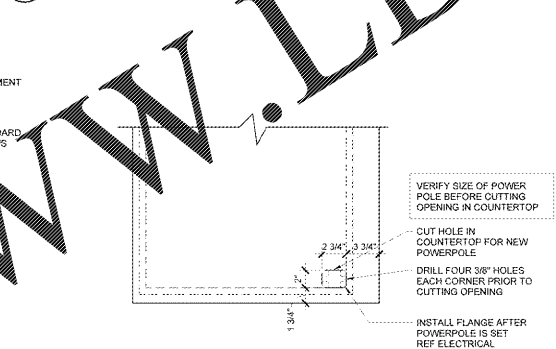
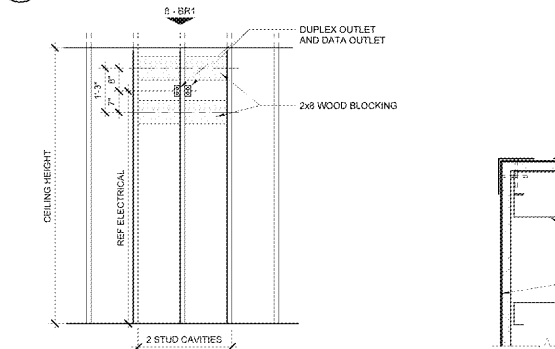
HEADER LENGTH	HEADER MEMBERS	HEADER TRACKS	JAMB STUDS
UP TO 4'-0"	(2) C3 5/8x1 1/4x20 GA	(2) C3 5/8x22 GA	(2) C3 5/8x1 1/4x20 GA
UP TO 10'-0"	(2) C2x1 3/8x18 GA	(2) C2x18 GA	(2) C2x1 3/8x18 GA
OVER 10'-0" & UP TO 14'-0"	(2) C2x1 5/8x18 GA	(2) C2x18 GA	(2) C2x1 5/8x18 GA
OVER 14'-0" & UP TO 18'-0"	(2) C2x1 5/8x16 GA	(2) C2x16 GA	(2) C2x1 5/8x18 GA
OVER 18'-0" & UP TO 20'-0"	(2) C12x1 3/8x16 GA	(2) C2x18 GA	(2) C2x1 3/8x16 GA
OVER 20'-0" & UP TO 24'-0"	(2) C12x1 5/8x18 GA	(2) C2x18 GA	(2) C2x1 3/8x16 GA

- NOTES**
- MAX WALL HEIGHT ABOVE HEADER ASSEMBLY IS 14'-0".
 - SPLICING OF HEADER AND JAMB MEMBERS IS NOT PERMITTED.
 - MAX SPAN FOR OPENINGS TO RECEIVE UNIT BELOW THE HEADER IS 10'-0".
 - JAMBS NOT TO BE BRACED IN ACCORDANCE WITH THE PARTITION BRACING DETAILS. 3/4" JAMBS BEYOND 13'-0" ARE TO BE BRACED ABOVE THE OPENING AND SUCH THAT THE MAXIMUM UNBRACED LENGTH IS NOT EXCEEDED.
 - FRAMING MEMBERS ARE NOT SIZED FOR VERTICAL LOAD OTHER THAN THAT OF THE PORTION OF WALL ABOVE THE OPENING.



9 HEADER CONNECTION DETAIL
 1 1/2" x 1'-0"

8 TV BRACKET BLOCKING PLAN
 1 1/2" x 1'-0"

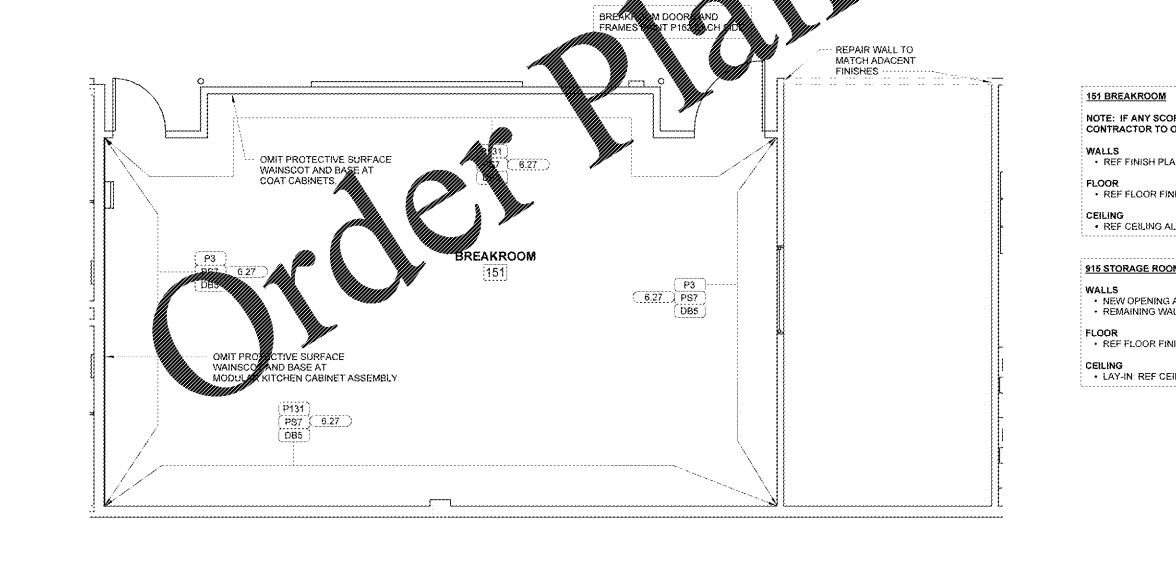
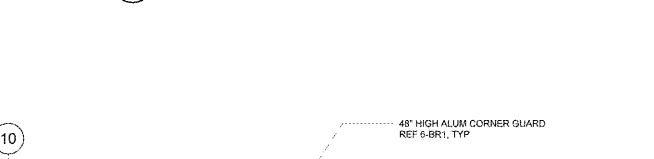


7 TV BRACKET BLOCKING
 1/2" x 1'-0"

6 CORNER GUARD
 3" x 1'-0"

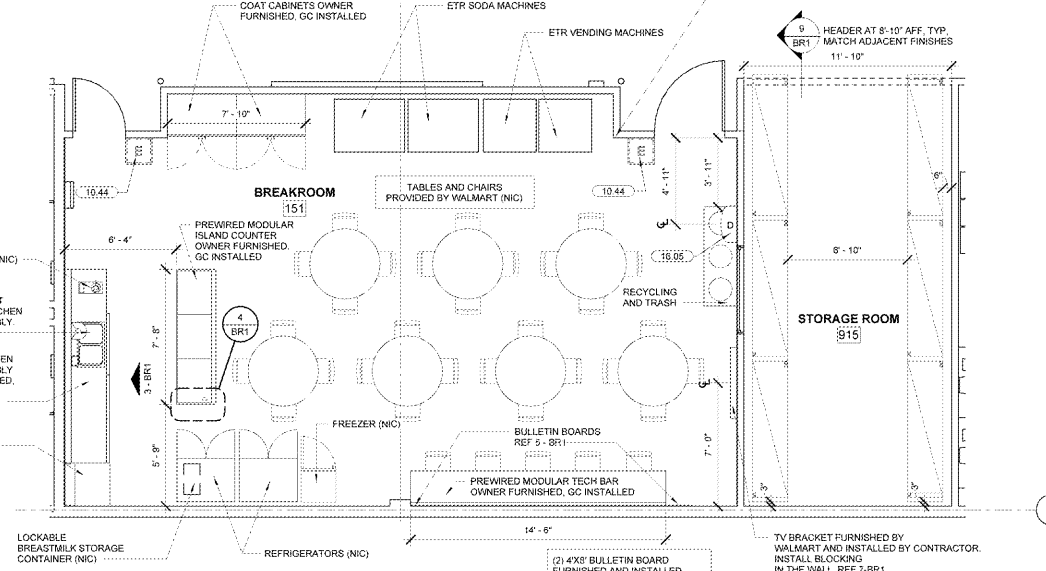
5 TACK BULLETIN BOARD
 2 1/2" x 1'-0"

3 MODULAR CABINET ASSEMBLY ELEVATION
 1/2" x 1'-0"



- 151 BREAKROOM**
- NOTE: IF ANY SCOPE ITEMS BELOW ARE EXISTING, CONTRACTOR TO OMIT SCOPE OF WORK.
- WALLS**
- REF FINISH PLAN FOR FINISH INFORMATION
- FLOOR**
- REF FLOOR FINISH PLAN ON A1.1
- CEILING**
- REF CEILING ALLOWANCE SCHEDULE ON N1

- 915 STORAGE ROOM**
- WALLS**
- NEW OPENING AS SHOWN
 - REMAINING WALLS ETR
- FLOOR**
- REF FLOOR FINISH PLAN ON A1.1
- CEILING**
- LAY-IN: REF CEILING ALLOWANCE SCHEDULE ON N1



2 ENLARGED BREAKROOM FINISH PLAN
 1/4" x 1'-0"

1 ENLARGED PLAN
 1/4" x 1'-0"

Order Plans @

WWW.LDILine.com