

REV.	DESCRIPTION

SEALS

REVISIONS

REV.	DESCRIPTION

DATE

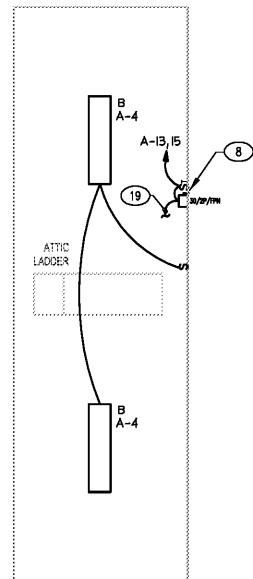
06-24-2019

SHEET NAME

ELECTRICAL PLANS

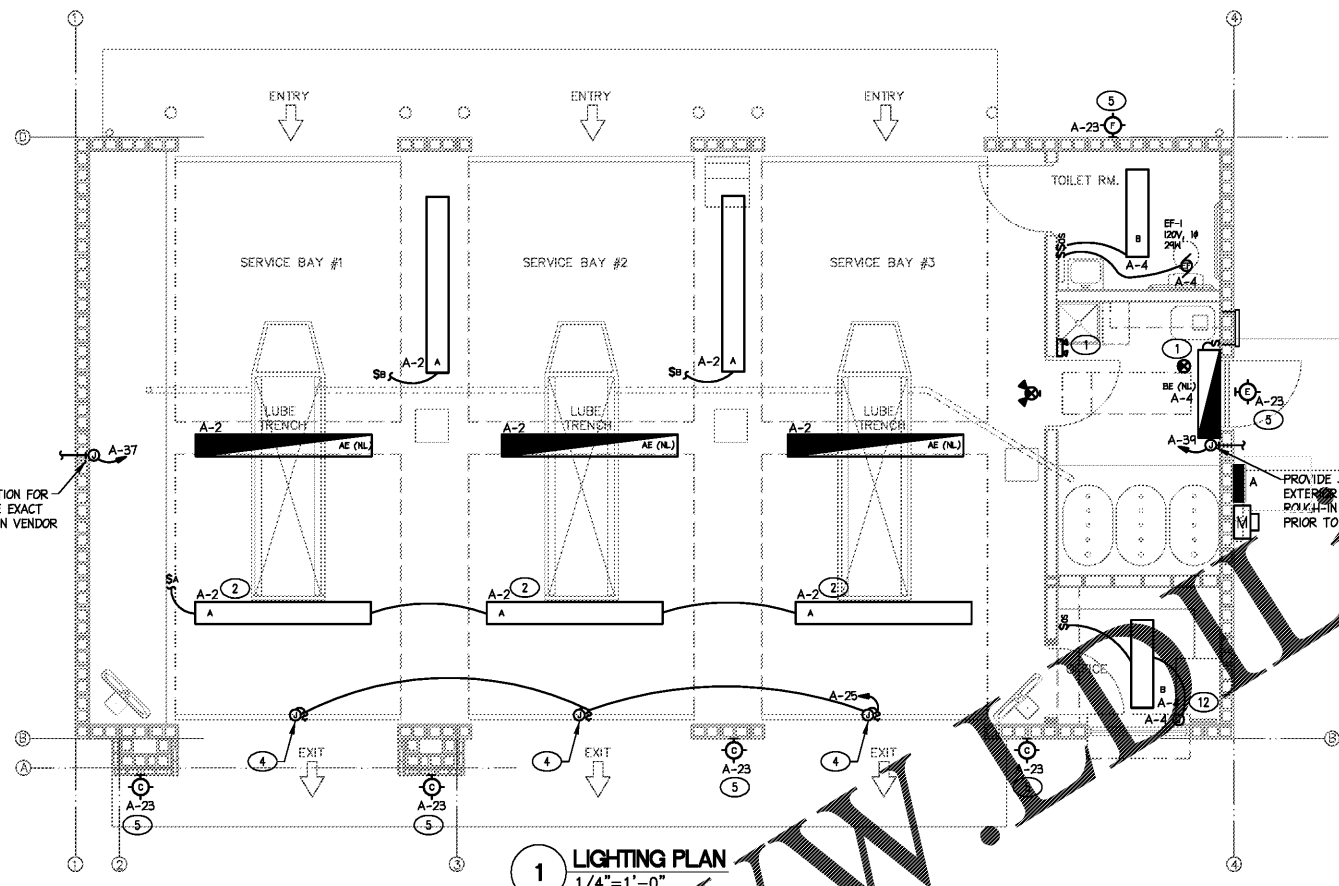
SHEET NUMBER

E-2



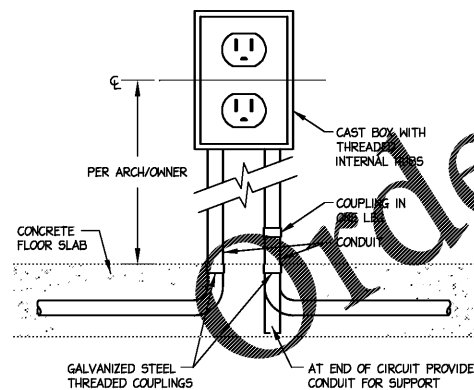
PROVIDE J-BOX AND CONNECTION FOR EXTERIOR SIGNS. COORDINATE EXACT ROUGH-IN LOCATION WITH SIGN VENDOR PRIOR TO ROUGH-IN.

3 MEZZANINE PLAN
 1/4"=1'-0"

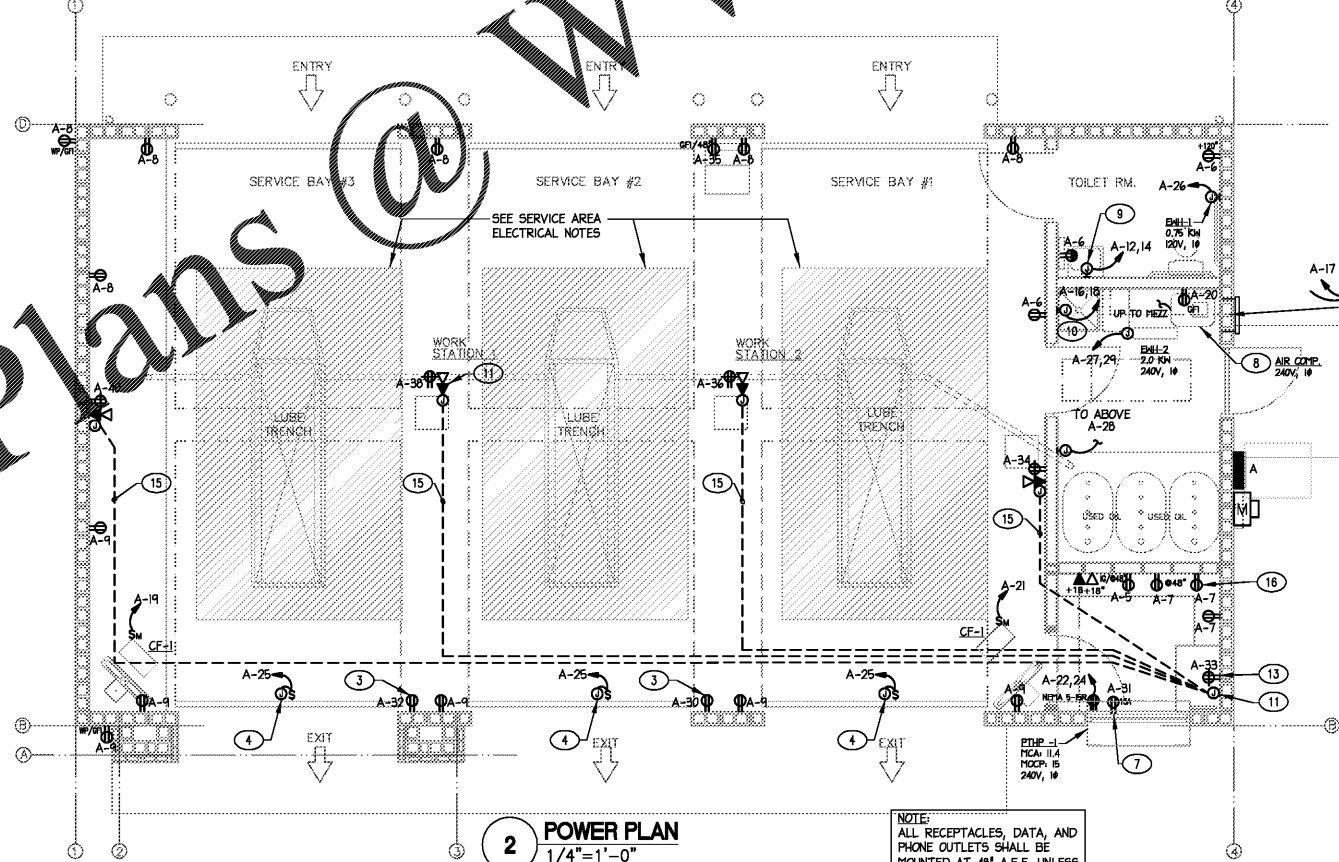


1 LIGHTING PLAN
 1/4"=1'-0"

- SHEET KEY NOTES:**
- ALL EXISTING LIGHT, AND EMERGENCY LIGHT FIXTURES SHALL BE CIRCUITED TO AN UNSWITCHED LEG OF THE NEAREST LOCAL LIGHTING CIRCUIT.
 - COORDINATE EXACT FINAL LOCATION OF THESE LIGHT FIXTURES WITH GC SO THAT LIGHTS ARE OVER WINDOWS IN ROLL UP DOORS WHEN IN OPEN POSITION.
 - 20A 120V RECEPTACLE FOR MISCELLANEOUS USE. COORDINATE FINAL LOCATION OF RECEPTACLE WITH OWNER.
 - PROVIDE J-BOX BEHIND FASCIA FOR BUILDING SIGN. FIELD COORDINATE FINAL SIGN LOCATION WITH ARCHITECTURAL ELEVATIONS AND SIGN VENDOR. E.G. SHALL MAKE FINAL CONNECTIONS TO BUILDING SIGN. (TYPICAL 3 PLACES)
 - TO BE CONTROLLED BY TIME CLOCK.
 - PROVIDE CONNECTION TO PYLON SIGN. RUN 2#10, #10G, IN 1" CONDUIT UNDERGROUND. ONE BRANCH CIRCUIT SHALL BE ON CONTINUOUS, ONE BRANCH CIRCUIT SHALL BE CONTROLLED BY TIME CLOCK. FIELD COORDINATE FINAL SIGN LOCATION WITH SIGN COMPANY PRIOR TO CONSTRUCTION.
 - PROVIDE RECEPTACLE ABOVE WINDOW FOR "OPEN" SIGN. VERIFY MOUNTING HEIGHT PRIOR TO ROUGH-IN (IN CEILING).
 - CONNECT AIR COMPRESSOR DISCONNECT TO CIRCUIT SHOWN VIA 7 DAY, 24 HR TIME SWITCH. LOCATE ON MEZZANINE LEVEL. 110V, 20 AMP, SUITABLE FOR MOTOR CONTROL.
 - PROVIDE JUNCTION UNDER SINK FOR INSTANTANEOUS WATER HEATER, WEL 3.5 KW @ 240V, 1Ø
 - PROVIDE JUNCTION NEAR SINK FOR INSTANTANEOUS WATER HEATER, HBL 3.5 KW @ 240V, 1Ø
 - PROVIDE (4) 3/4" CONDUIT BACK TO DATA ROUTER. PROVIDE DEDICATED 3/4" CONDUIT FOR EACH DATA RUN BACK TO ROUTER. ROUTE BELOW SLAB AND TURN UP AT ROUTER. PROVIDE JUNCTION BOX AT ROUTER. FIELD VERIFY EXACT LOCATION AND CONDUIT ROUTING PRIOR TO INSTALLATION.
 - PROVIDE JUNCTION BOX FOR CAN LIGHT FIXTURE.
 - PROVIDE DUPLEX RECEPTACLE IN CEILING FOR DATA ROUTER. FIELD VERIFY EXACT LOCATIONS PRIOR TO INSTALLATION.
 - MEZZANINE ABOVE. SEE DETAIL THIS SHEET.
 - 3/4" CONDUIT TO DATA ROUTER IN OFFICE.
 - PROVIDE RECEPTACLE IN CEILING FOR DVR. VERIFY MOUNTING PRIOR TO ROUGH-IN.
 - MANUAL TIMER FOR WASTE OIL PUMP. VERIFY WITH OWNER THE EXACT LOCATION OF TIMER AND RECEPTACLE.
 - PROVIDE CONDUIT OVERHEAD FOR J-BOX AND DEVICE BOXES. COORDINATE EXACT DROP LOCATIONS WITH ARCHITECT/OWNER PRIOR TO COMMENCING WORK.
 - ROUTE TO AIR COMPRESSOR ON LOWER LEVEL. FIELD VERIFY LOCATION AND CONDUIT ROUTING.



4 RECEPTACLE STUB-UP DETAIL
 NTS



2 POWER PLAN
 1/4"=1'-0"

NOTE: ALL RECEPTACLES, DATA, AND PHONE OUTLETS SHALL BE MOUNTED AT 48" A.F.F. UNLESS OTHERWISE NOTED.

ELECTRICAL NOTES FOR SERVICE BAYS

BUILDING IS CONSIDERED A "MINOR REPAIR GARAGE" PER NEC ARTICLE 511.2 FLAMMABLE LIQUIDS HAVING A FLASH POINT BELOW 38°C (100°F) SUCH AS GASOLINE, OR GASEOUS FUELS SUCH AS NATURAL GAS OR HYDROGEN, WILL NOT BE DISPENSED OR TRANSFERRED.

ACCORDING TO NEC ARTICLE 511.3(D) THE FOLLOWING LOCATIONS IN THE SERVICE AREAS SHALL BE CONSIDERED CLASS 1 DIVISION 2 LOCATIONS:

- FLOOR AREAS UP TO A LEVEL OF 18" ABOVE THE PITS AND EXTENDING A DISTANCE 3' HORIZONTALLY FROM THE EDGE OF ANY PIT.
- PIT AREAS UP TO THE FLOOR LEVEL.

NOTE: CEILING AREAS ARE UNCLASSIFIED SINCE LIGHTER THAN AIR GASSES (SUCH AS NATURAL GAS AND HYDROGEN) WILL NOT BE TRANSFERRED.

ALL ELECTRICAL WORK IN THESE CLASSIFIED AREAS SHALL CONFORM TO ARTICLE 511 FOR CLASS 1 DIVISION 2 LOCATIONS.

PROVIDE SEALS IN CONDUIT AND CABLE SYSTEMS PER ARTICLE 501 IN CLASSIFIED AREAS.

NOTE: OFFICE, RESTROOM AND OIL STORAGE AREAS ARE UNCLASSIFIED SINCE WALLS ARE USED TO EFFECTIVELY CUT OFF/SEPARATE THESE ROOMS FROM AREAS WHERE FLAMMABLE VAPORS ARE LIKELY TO BE RELEASED AND THESE AREAS ARE TYPICALLY OUTSIDE THE 3' HORIZONTAL DISTANCE FROM PIT EDGE.