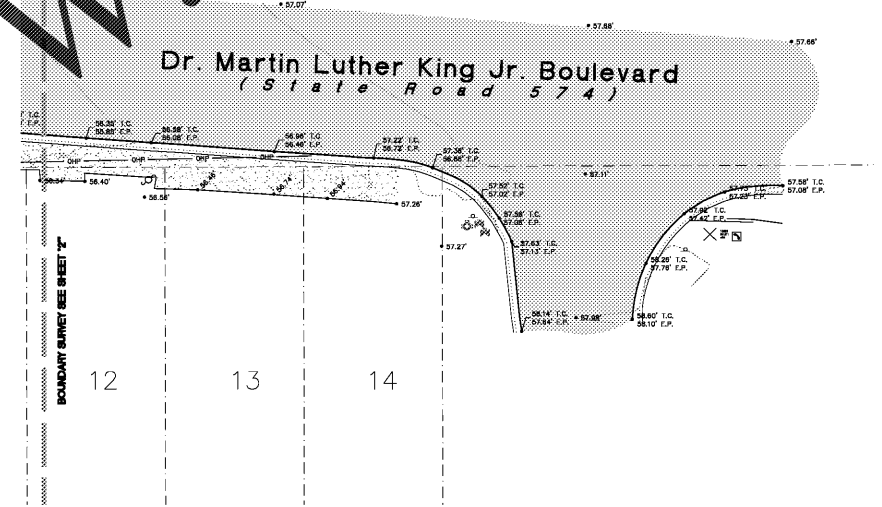
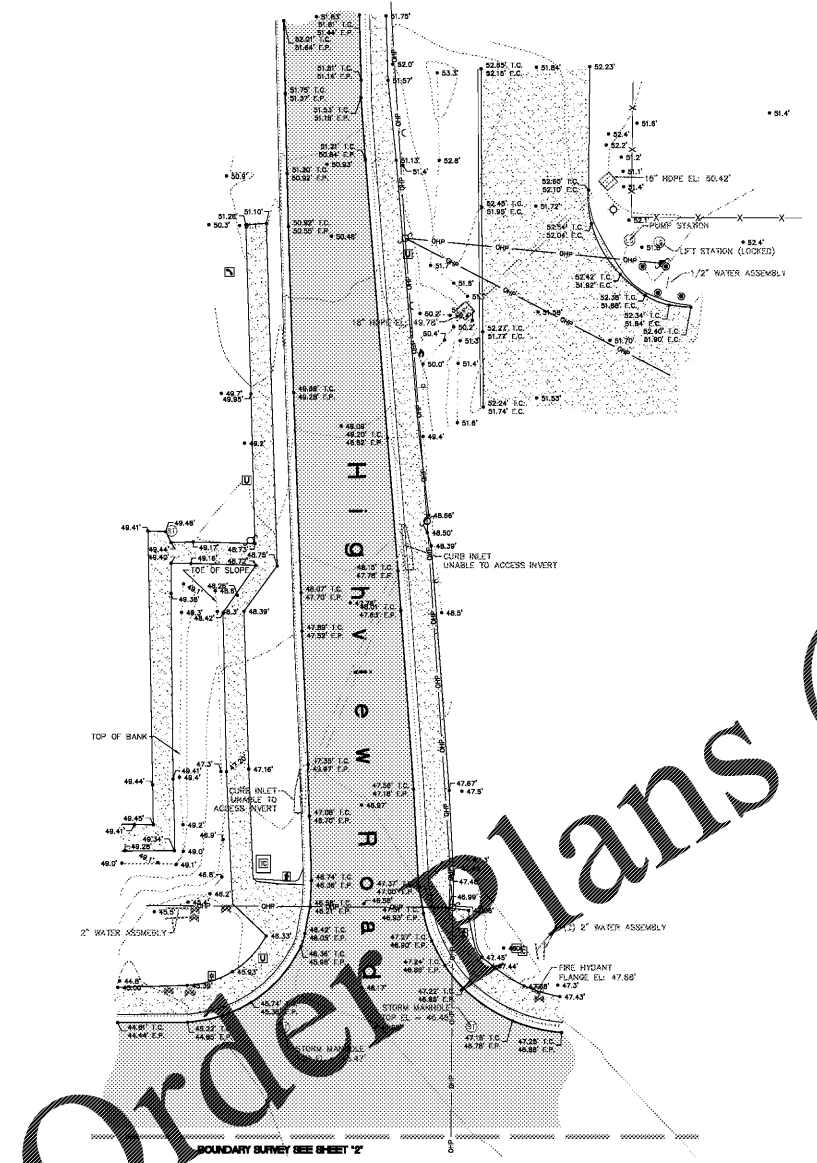


- LEGEND**
- IP, IR = IRON PIPE, IRON ROD
  - CM = CONCRETE MONUMENT
  - (F) = FIELD DERIVED MEASUREMENT
  - (D) = MEASUREMENT PER DESCRIPTION
  - (P) = MEASUREMENT PER PLAT
  - (C) = CALCULATED MEASUREMENT
  - PC = PROPERTY LINE, CENTERLINE
  - R/W = RIGHT-OF-WAY
  - O.R. = OFFICIAL RECORDS BOOK
  - PG. = PAGE
  - EL = ELEVATION
  - I.E. = INVERT ELEVATION
  - F.F. = FINISHED FLOOR ELEVATION
  - TBM = TEMPORARY BENCHMARK
  - PVC = POLY-VINYL CHLORIDE PIPE
  - RCP = REINFORCED CONCRETE PIPE
  - CMP = CORRUGATED METAL PIPE
  - HDPE = HIGH-DENSITY POLYETHYLENE PIPE
  - DIP = DUCTILE IRON PIPE
  - VCP = VITRIFIED CLAY PIPE
  - = FOUND IR (SIZE & REGISTRATION NUMBER AS NOTED)
  - = FOUND IP (SIZE & REGISTRATION NUMBER AS NOTED)
  - = FOUND CM (SIZE & REGISTRATION NUMBER AS NOTED)
  - = SET 4"x4" CM "LB 4514"
  - △ = FOUND NAIL & DISK (SIZE & REGISTRATION NUMBER AS NOTED)
  - ▲ = SET NAIL & DISK "LB 4514"
  - ▽ = VERTICAL CONTROL BENCHMARK
  - ⊕ = POWER / TELEPHONE POLE
  - ⊙ = METER POLE
  - = LIGHT POLE
  - = GUY ANCHOR
  - = BOLLARD
  - ⊕ = ROAD SIGN
  - ⊕ = WATER LINE
  - ⊕ = STORM MANHOLE
  - ⊕ = ELECTRIC BOX
  - ⊕ = GAS LINE
  - ⊕ = TRAFFIC SIGNAL POLE
  - ⊕ = UTILITY VAULT
  - ⊕ = OAK TREE (SIZE AS NOTED)
  - ⊕ = SPOT ELEVATION
  - = WOOD FENCE
  - = VINYL FENCE
  - = CHAIN LINK FENCE
  - = OVERHEAD POWER LINE
  - ▨ = ASPHALT
  - ▨ = CONCRETE



Order Plans @ www.LDILine.com

DATE		REVISION					
SEE SHEET 1 FOR DESCRIPTION AND SURVEYOR'S NOTES							
<b>LD JOHNSON ASSOCIATES</b> SURVEYING AND MAPPING <small>11011 S. Green St., 4514          San Antonio, TX 78228          Phone: (512) 386-2768          Fax: (512) 386-2769          www.ldjohnson.com</small>							
<b>BOUNDARY &amp; TOPOGRAPHY</b> Beacon Civil Engineering, Inc. <b>Take 5 Oil Change</b> <b>Mirror Lake</b> <small>PROJECT NO. 2018-539A01.BG0008A2          SEC. 10 TWP. 29 S. RNG. 20 E. COUNTY: Hillsborough County</small>							
<small>SCALE: 1" = 20'</small> <small>SHEET NO: 3 of 3</small>							

DATE OF FIELD SURVEY: 9/19/19