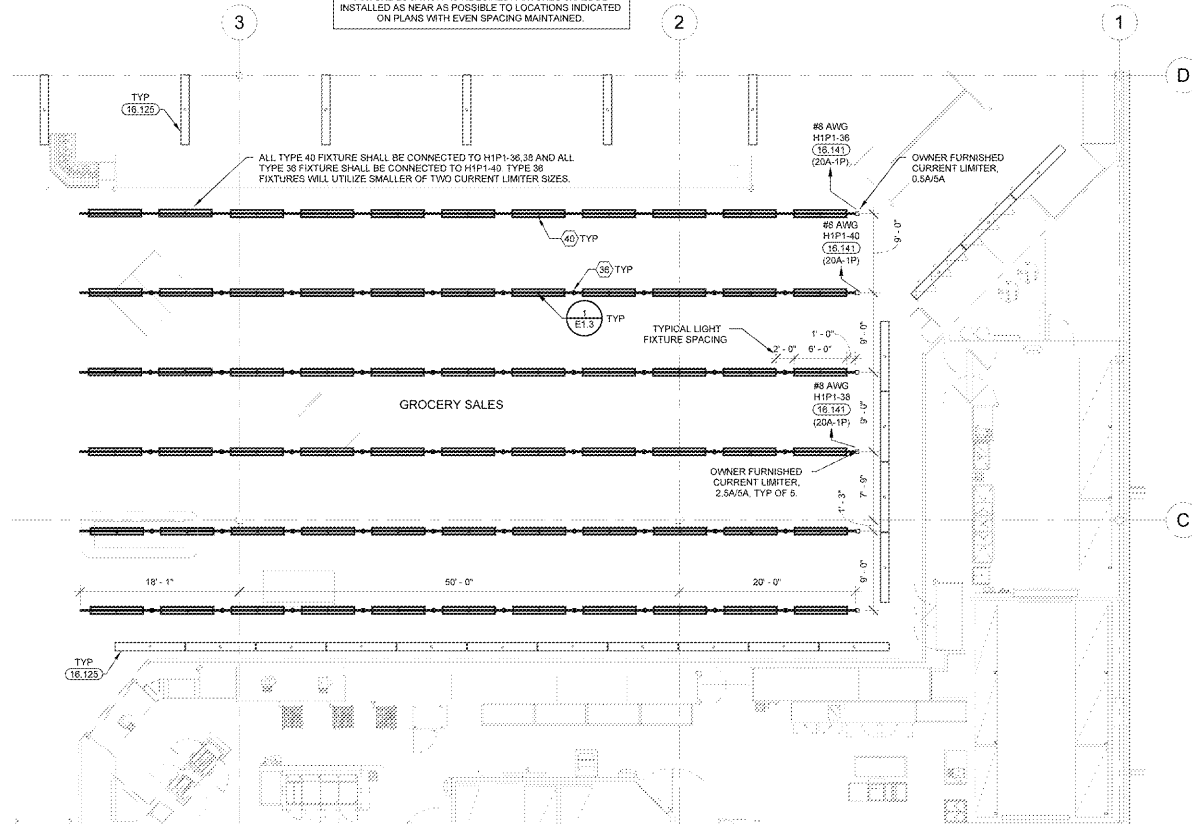
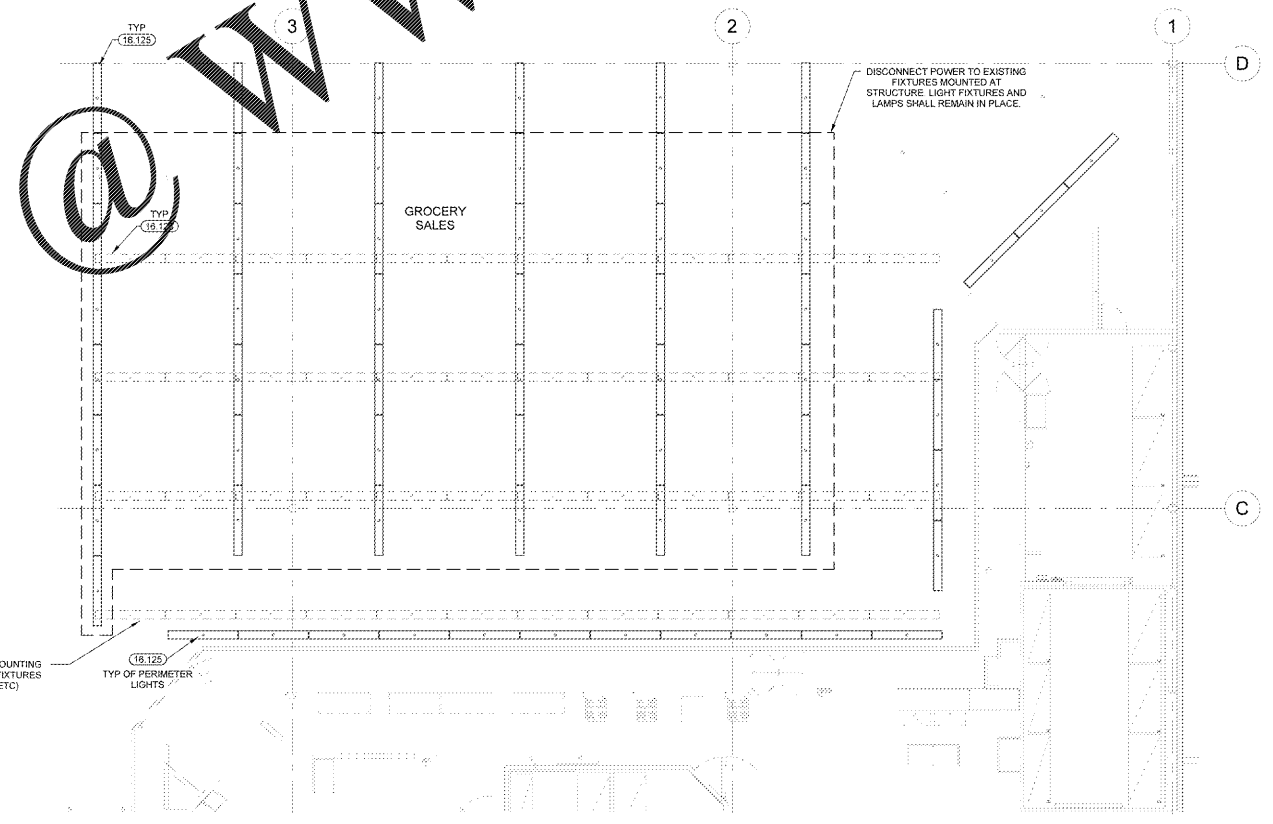


CONTRACTOR IS RESPONSIBLE FOR COMPLETE INSTALLATION OF THE LIGHTING SYSTEM AS INDICATED ON PLANS AND/OR AS MODIFIED TO ACCOMMODATE EXISTING OBSTRUCTIONS. IDENTIFY CONFLICTS PRIOR TO ROUGH-IN WHERE CONFLICTS WITH EXISTING UTILITIES OCCUR. ADJUST FIXTURE LOCATION AS REQUIRED. FIXTURES SHALL BE INSTALLED AS NEAR AS POSSIBLE TO LOCATIONS INDICATED ON PLANS WITH EVEN SPACING MAINTAINED.



2 GROCERY LIGHTING PLAN
1/8" = 1'-0"

CONTROL INFORMATION										
DESCRIPTION	TYPE	PANEL/CCT	BRKR POLES	BRKR TYPE	ON/OFF OUTPUT	DIM OUTPUT	DIM INPUT	ON/OFF PROGRAMMING	DIMMING PROGRAMMING	
SUSPENDED PRODUCE STRIP LIGHTING	POWER SWITCHING	H1P1-36	1	NEW	NCH-H1P1/EDC1	N/A	N/A	24 / 7 ON	N/A	
SUSPENDED PRODUCE CYLINDER LIGHTING	POWER SWITCHING	H1P1-40	1	NEW	NCH-H1P1/EDC1	N/A	N/A	24 / 7 ON	N/A	



1 GROCERY DEMO LIGHTING PLAN
1/8" = 1'-0"

PRODUCE LIGHTING GENERAL NOTES

1. TRACK LIGHTING INSTALLATION
 - A. ORIENT TRACK TO UTILIZE LEFT FEED CURRENT LIMITERS.
 - B. PROVIDE POWER TO EACH FIXTURE ROW VIA 1/2" FLEXIBLE METAL CONDUIT.
 - C. FIXTURES SHALL BE ATTACHED DIRECTLY TO TRACK UTILIZING PROVIDED CONNECTORS.
 - D. TRACK IS TWO-CIRCUIT. STRIP FIXTURES SHALL BE CONNECTED TO ONE CIRCUIT AND CYLINDER FIXTURES SHALL BE CONNECTED TO OTHER CIRCUIT. CYLINDERS AND STRIPS CANNOT BE ON THE SAME CIRCUIT.
 - E. REFERENCE MANUFACTURER'S INSTALLATION INSTRUCTIONS FOR INFORMATION ON ATTACHING FIXTURES TO TRACK.
2. TRACK LIGHTING MOUNTING HEIGHT CONSIDERATIONS
 - A. UTILIZE PROVIDED AIRCRAFT CABLE PERMANENTLY RECOMMENDATIONS TO SUSPEND TRACK FOLLOWING CORRECT ALTERNATE FROM THE LIST BELOW. IF THERE ARE ANY OBSTRUCTIONS PREVENTING UNIFORM MOUNTING HEIGHT (E.G. DUCTWORK), MOUNT TRACK TO OBSTRUCTIONS AT MAXIMUM POSSIBLE HEIGHT WHERE ALL ROWS ARE AT THE SAME HEIGHT.
 1. ALL TRACKS ARE PARALLEL TO TRACK. IF PRODUCE AREA GIRDER IS PERPENDICULAR TO TRACK AND BOTTOM OF GIRDER IS ABOVE 18'-0", SUSPEND TRACK TO A HEIGHT OF 18'-0" HEIGHT.
 2. IF PRODUCE AREA GIRDER IS PERPENDICULAR TO TRACK AND BOTTOM OF GIRDER IS BELOW 18'-0", TRACK SHALL RUN THROUGH GIRDER WEBSING AND BE SUSPENDED TO A UNIFORM 18'-0" HEIGHT. UNIFORMLY ADJUST ALL TRACK LOCATIONS TO ENSURE THE SPACE BETWEEN THE STRIP AND CYLINDER FIXTURE FALLS AT THE INTERSECTION OF THE GIRDER AND TRACK.
3. TRACK LIGHTING TESTING
 - A. UPON COMPLETION OF INSTALLATION, CONTRACTOR SHALL TEST PRODUCE LIGHTS FOR PROPER OPERATION.
 - B. ENSURE CORRECT SIZE CURRENT LIMITERS ARE INSTALLED ON EACH TRACK ROW PER PLANS.
 - C. ENSURE CYLINDER FIXTURES ARE CONNECTED TO THE SMALLER OF TWO CURRENT LIMITER SIZES ON EACH ROW.
 - D. ENSURE ALL CYLINDERS ARE ON THE SAME CIRCUIT(S).
 - E. ENSURE ALL STRIP FIXTURES ARE ON THE SAME CIRCUIT(S).

KEYNOTES

- 16.125 EXISTING LIGHT FIXTURES TO REMAIN UNLESS NOTED OTHERWISE.
- 16.126 EXISTING LIGHT FIXTURE TO BE DEMOLISHED. PROVIDE NEW SOLENOID OPERATED CIRCUIT BREAKER (MPP) IN EXISTING PANELBOARD INDICATED. E.C. SHALL MATCH MANUFACTURER TYPE AND RATINGS OF EXISTING CIRCUIT BREAKERS. SUBSTITUTIONS NOT PERMITTED. REFER TO ENERGY MANAGEMENT PLANS FOR CIRCUIT BREAKER CONTROL.
- 16.141

CONTRACTOR SHALL VERIFY ALL UTILITIES PRIOR TO ROUGH-IN. CONTRACTOR SHALL BE RESPONSIBLE FOR OBTAINING ALL NECESSARY PERMITS AND APPROVALS PRIOR TO CONSTRUCTION.

CONSULTANTS

Walmart
FAYETTEVILLE, NC

STORE NO. 1261-248
JOB NUMBER: USRM07256 | PHOTO: 195 PHOTO SC

ISSUE BLOCK

NO.	DESCRIPTION	DATE

CHECKED BY: DES
DRAWN BY: BDJ
PROTO CYCLE: 02/8/2020
DOCUMENT DATE: 04/15/2020

DOCUMENTS WITHOUT SIGNATURE AND REQUIRED SEAL OF APPROVAL ARE NOT FOR CONSTRUCTION

CYNERGY ENGINEERING, PLLC
CA # P-5584
EXPIRES 06/30/2020
MATTHEW RUTKOWSKI, P.E.
ENGINEER OF RECORD

GROCERY LIGHTING PLANS

SHEET: **GE1**

Order Plans @ www.LDILine.com

EXISTING CONDITIONS WERE TAKEN FROM ORIGINAL DRAWINGS AND MAY NOT REFLECT EXACT "AS-BUILT" CONDITIONS. CONTRACTOR SHALL FIELD VERIFY ALL EXISTING CONDITIONS PRIOR TO SUBMITTING FINAL BIDS. CONTRACTOR SHALL CAREFULLY COORDINATE NEW WORK AND DEMOLITION WITH ALL OTHER DISCIPLINES AND EXISTING CONDITIONS.

EACH SUBCONTRACTOR IS RESPONSIBLE FOR HAVING A THOROUGH KNOWLEDGE OF ALL DRAWINGS AND SPECIFICATIONS IN THEIR RELATED FIELD. THE FAILURE TO ACQUAINT THEMSELVES WITH THIS KNOWLEDGE DOES NOT RELIEVE THE RESPONSIBILITY OF PERFORMING THE WORK PROPERLY. NO ADDITIONAL COMPENSATION SHALL BE ALLOWED BECAUSE OF CONDITIONS THAT OCCUR DUE TO FAILURE TO FAMILIARIZE WORKERS WITH THIS KNOWLEDGE.