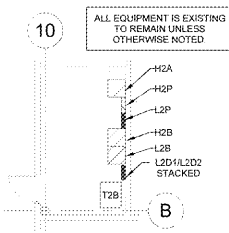
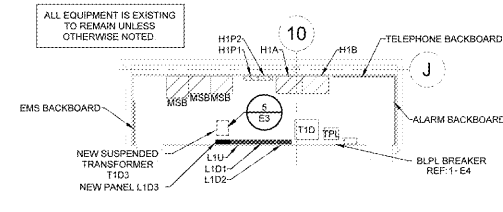


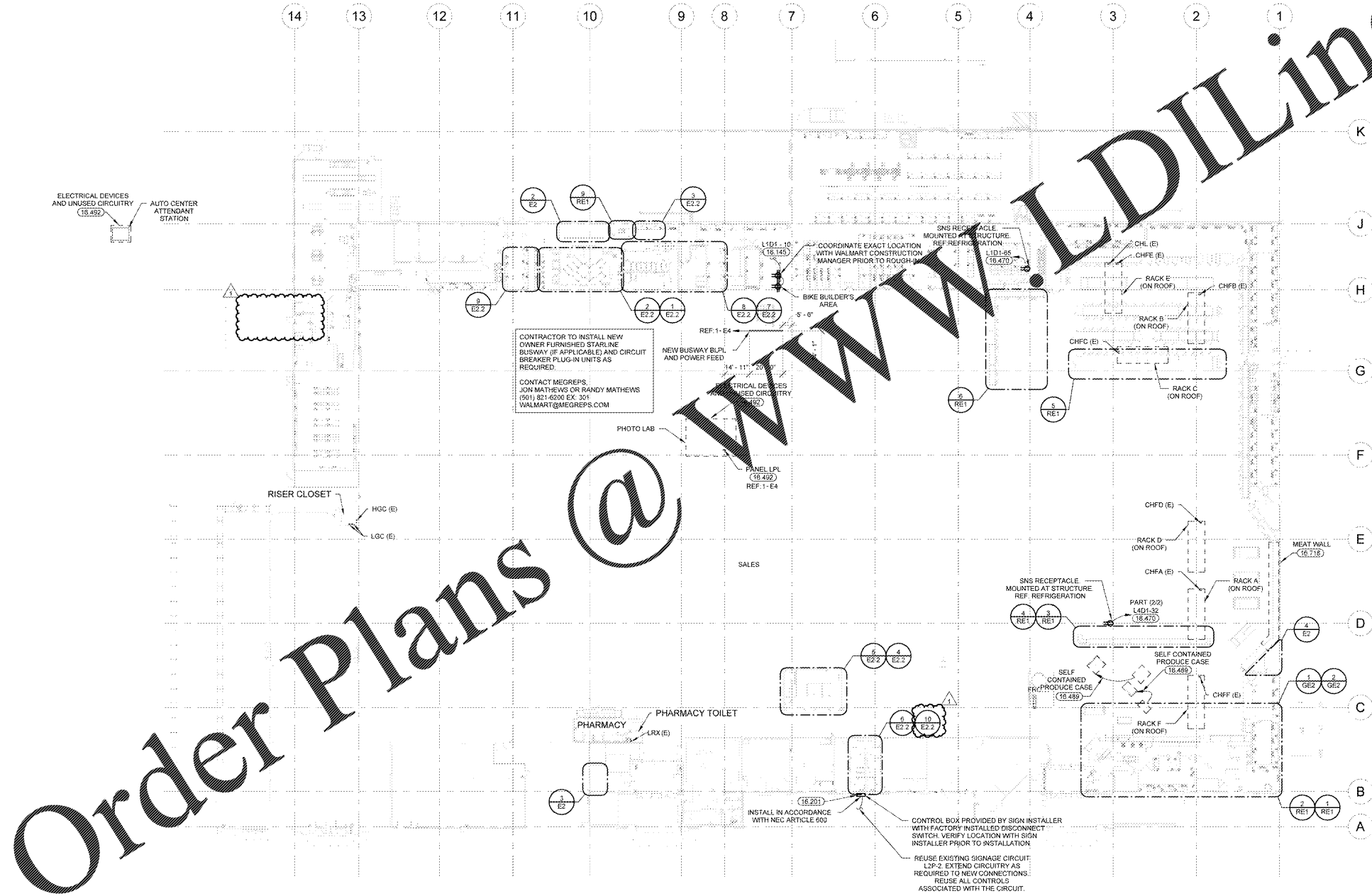
4 ELEC RM 4
1/8" = 1'-0"



3 ELEC RM 2
1/8" = 1'-0"



2 ELEC RM 1
1/8" = 1'-0"



1 POWER PLAN
1" = 30'-0"

GENERAL POWER NOTES

- TELEPOWER POLE(S) (MOUNT JUNCTION BOXES) TO TOP SIDE OF BOTTOM CHORD OF BAR JOIST. INSTALL FURNISHED POWER POLE AND TERMINATE WIRING TO JUNCTION BOX. PROVIDE UNRESTRICTED SUPPORTS AND HARDWARE TO SECURE TELEPOWER POLE PLUMB TO BUILDING STRUCTURE. REF POWER POLE CONNECTION DETAIL.
- PROVIDE LIQUID-TIGHT FLEXIBLE METAL CONDUIT AND WIRING FROM DISCONNECT SWITCH OR JUNCTION BOX TO EQUIPMENT KNOCKOUT OR ELECTRICAL CONNECTION POINT.
- WHERE EQUIPMENT NAMEPLATE PROTECTIVE DEVICE RATING DIFFERS FROM SIZE PROVIDED, NOTIFY WALMART CONSTRUCTION MANAGER IMMEDIATELY TO COORDINATE RESOLUTION.
- ELECTRONIC FIRE PROTECTION/SECURITY ALARM BOXES AND CONDUITS SHOWN ON POWER PLANS SHALL BE PROVIDED UNDER THIS CONTRACT. IN ADDITION, UNLESS NOTED OTHERWISE, THE FOLLOWING GENERAL NOTES APPLY:
 - ALL ALARM JUNCTION BOXES SHALL BE 4"X4" MINIMUM.
 - ALARM BOXES SHALL BE 3/4" MINIMUM WITH WIRE AND INSULATING BUSHINGS AT END OF ELECTRICAL RUN.
 - VERTICAL RACEWAYS FROM ALARM BOXES SHALL BE EITHER CONCEALED INSIDE WALL OR MOUNTED TO BAR JOIST AND EXTENDED HORIZONTALLY TO A LOCATION ACCESSIBLE BY VERTICAL FLOOR TYPE LIFT.
- UPON COMPLETION OF ELECTRICAL INSTALLATION AND PRIOR TO ENERGIZING CIRCUIT:
 - INSPECT WIRE AND CABLE FOR PHYSICAL DAMAGE.
 - PERFORM CONTINUITY TEST.
 - VERIFY PROPER PHASING CONNECTION TO ALL THREE PHASE MOTOR LOADS.

KEYNOTES

- CONNECT CIRCUIT(S) TO EXISTING BRANCH CIRCUITRY. MINIMUM WIRE SIZE AND PANELBOARD CIRCUIT ARE NOTED. VERIFY SIZE, RATINGS AND CONDITION OF EXISTING BRANCH CIRCUIT CONDUIT AND WIRE PRIOR TO USE TO ENSURE THAT THEY MEET REQUIRED SIZE AND ALL U.L. RATINGS AND REPLACE AS REQUIRED.
- EXTERIOR SIGN POWER: WHERE ELECTRICAL CONNECTIONS FOR SIGNAGE OCCUR BELOW ROOF LINE, MOUNT JUNCTION BOXES TO WALL AT SIGN CONNECTION POINT AND PROVIDE 3/4" CONDUIT TO CONTROL BOX FOR LOW VOLTAGE WIRING (INSTALLED BY OTHERS). REFER TO ARCHITECTURAL DRAWINGS FOR EXACT SIGN LOCATION(S) PRIOR TO INSTALLATION. WHERE ELECTRICAL CONNECTIONS FOR SIGNAGE OCCUR ABOVE ROOF LINE, PROVIDE UNRESTRICTED SUPPORTS TO BACK SIDE OF PARAPET AND PROVIDE 3/4" CONDUIT TO CONTROL BOX FOR LOW VOLTAGE WIRING (INSTALLED BY OTHERS). PROVIDE ONLY ONE PENETRATION THROUGH THE ROOF. REF ARCHITECTURAL EXTERIOR WALL SECTIONS AND SIGN ATTACHMENT FOR ROOF AND PARAPET PENETRATION REQUIREMENTS.
- FURNISH AND INSTALL NEW 20 AMP, 120 VOLT CIRCUIT(S). FEED FROM PANELBOARD AS INDICATED. PROVIDE 20A-1P CIRCUIT BREAKER IF NEEDED. E.C. SHALL MATCH MANUFACTURER TYPE AND RATINGS OF EXISTING CIRCUIT BREAKERS.
- RELOCATE, EXTEND, AND RECONNECT CIRCUITRY AND ELECTRICAL DEVICES FOR RELOCATED AND/OR NEW EQUIPMENT. VERIFY CONDITION OF BRANCH CIRCUITRY, CONDUIT AND WIRE TO ENSURE THEY MEET ALL U.L. RATINGS AND REPLACE AS REQUIRED. VERIFY FINAL LOCATION OF RELOCATED/NEW EQUIPMENT WITH WALMART CONSTRUCTION MANAGER PRIOR TO ROUGH-IN.
- E.C. SHALL COORDINATE WITH GENERAL CONTRACTOR AND ARCHITECTURAL DEMOLITION PLANS THE EXTENT OF ELECTRICAL DEMOLITION. REMOVE UNUSED DEVICES, BOXES, CONDUITS, AND WIRING BACK TO ORIGINATING JUNCTION BOXES OR PANELBOARDS. REFER TO POWER PLANS FOR CIRCUITRY TO BE REUSED. DEMOLITION SHALL NOT AFFECT ACTIVE CIRCUITS IF CIRCUIT IS DEMOLISHED ALL THE WAY TO PANELBOARD. REMOVE CIRCUIT BREAKER AND REPLACE WITH FILLER PLATE. UPDATE TYPEWRITTEN CIRCUIT DIRECTORY IDENTIFYING CIRCUIT AS "SPACE". COORDINATE EXACT REQUIREMENTS WITH EXISTING CONDITIONS PRIOR TO BID.
- REMOVE EXISTING FLUORESCENT LAMPS, CONNECTORS AND BALLASTS FROM REFRIGERATED CASE AND SHELVES AND REPLACE WITH OWNER FURNISHED LED LIGHTING RETROFIT KIT. INSTALL LED POWER SUPPLY AND LIGHT BARS PER MANUFACTURER'S INSTRUCTIONS.



STIPULATION FOR REUSE
THIS DOCUMENT IS THE PROPERTY OF CINTERGY ENGINEERING, PLLC. IT IS TO BE USED ONLY FOR THE PROJECT AND SITE SPECIFICALLY IDENTIFIED HEREIN. IT IS NOT TO BE REPRODUCED, COPIED, OR TRANSMITTED IN ANY FORM OR BY ANY MEANS, WITHOUT THE WRITTEN PERMISSION OF CINTERGY ENGINEERING, PLLC. ANY UNAUTHORIZED USE OF THIS DOCUMENT IS PROHIBITED.



ISSUE BLOCK	
1	REV #1 06/19/2020

CHECKED BY: DES
DRAWN BY: BOJ
PROTO CYCLE: 02/8/2020
DOCUMENT DATE: 04/15/2020

DOCUMENTS WITHOUT SIGNATURE AND REQUIRED SEAL OF ARCHITECT ARE NOT FOR CONSTRUCTION

CINTERGY ENGINEERING, PLLC
CA # P-5884
EXPIRES 06/30/2020
MATTHEW RUTKOWSKI, P.E.
ENGINEER OF RECORD

POWER PLAN

SHEET: E2

Order Plans @

WWW.LDILine.com

EXISTING CONDITIONS WERE TAKEN FROM ORIGINAL DRAWINGS AND MAY NOT REFLECT EXACT "AS-BUILT" CONDITIONS. CONTRACTOR SHALL FIELD VERIFY ALL EXISTING CONDITIONS PRIOR TO SUBMITTING FINAL BIDS. CONTRACTOR SHALL CAREFULLY COORDINATE NEW WORK AND DEMOLITION WITH ALL OTHER DISCIPLINES AND EXISTING CONDITIONS.

EACH SUBCONTRACTOR IS RESPONSIBLE FOR HAVING A THOROUGH KNOWLEDGE OF ALL DRAWINGS AND SPECIFICATIONS IN THEIR RELATED FIELD. THE FAILURE TO ACQUAINT THEMSELVES WITH THIS KNOWLEDGE DOES NOT RELIEVE THE RESPONSIBILITY OF PERFORMING THE WORK PROPERLY. NO ADDITIONAL COMPENSATION SHALL BE ALLOWED BECAUSE OF CONDITIONS THAT OCCUR DUE TO FAILURE TO FAMILIARIZE WORKERS WITH THIS KNOWLEDGE.