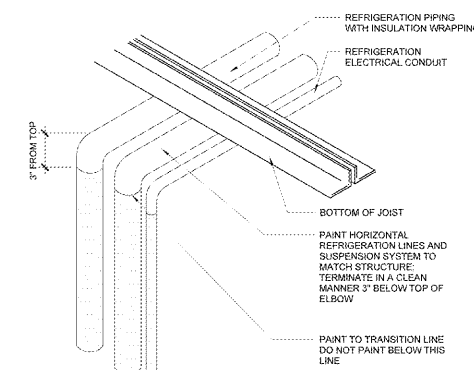


SANITARY COVE BASE SURFACE PREPARATION REQUIREMENTS

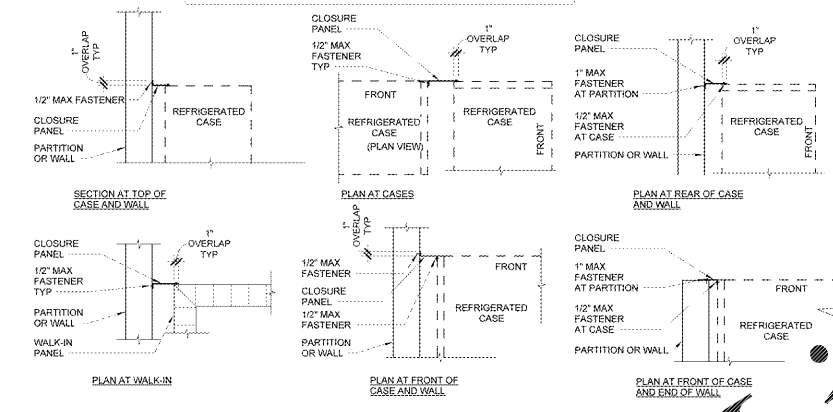
1. REMOVE EXISTING WALL BASE. AT EXISTING WALL CONDITIONS, REMOVE ALL GYPSUM BOARD BELOW 12" AFF AND REPLACE WITH GLASS-MAT BACKER OF SAME THICKNESS. IF FRP IS IN GOOD CONDITION REPLACE DAMAGED BASE WITH NEW BASE.
2. REMOVE AND REPLACE WALL FINISH TO NEAREST JOINT AS REQUIRED TO PERFORM GLASS-MAT BACKER INSTALLATION.
3. NOT USED.
4. REMOVE ALL DEBRIS AND ANY REMAINING GROUT, CLEAN SURFACES AS REQUIRED FOR PROPER INSTALLATION OF CONSTRUCTION MATERIAL AND FINISHES.
5. INSTALL BUILDING TAPE AND FIBERGLASS MESH TAPE AS INDICATED.

CYBERGY
 10000 W. STATE ST. SUITE 100
 TULSA, OK 74119
 (918) 437-7419
 www.cyberggy.com

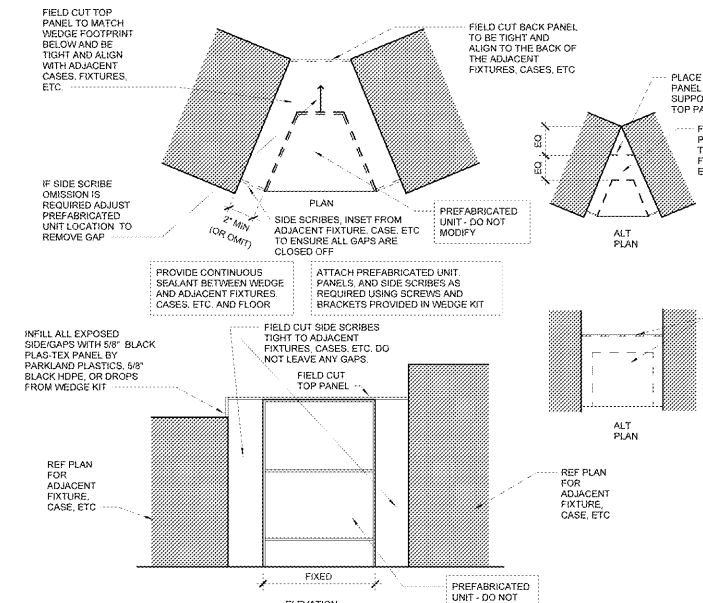
8 REFRIGERATION DROP LINES
 1 1/2" = 1'-0"



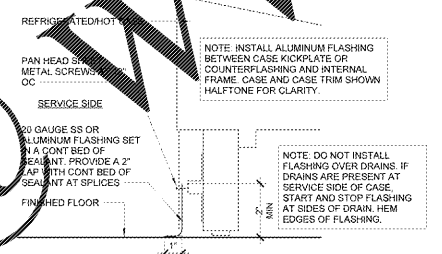
7 CLOSURE PANEL DETAIL
 3/4" = 1'-0"



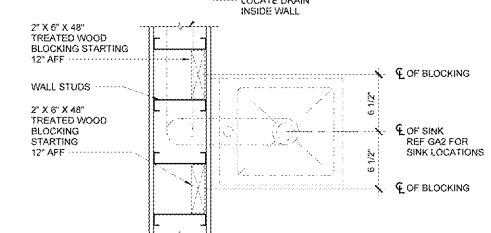
6 WEDGE KIT
 3/4" = 1'-0"



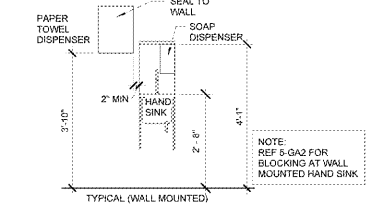
5 CASE FLASHING AT SERVICE DEPT
 3/4" = 1'-0" RM SC: GA3 RM WMN: ...



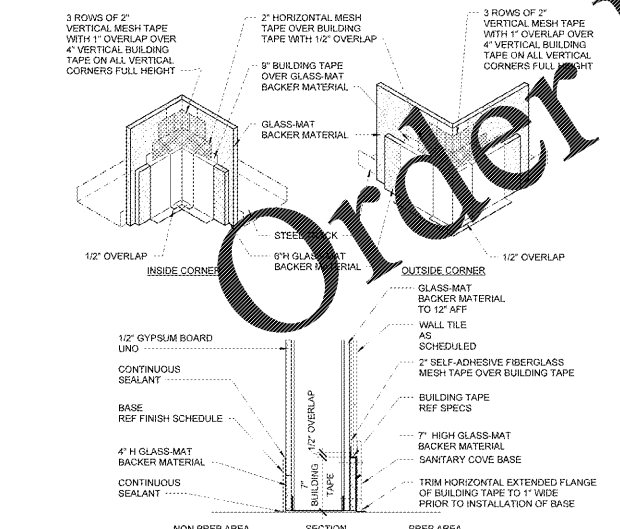
4A BLOCKING AT WALL MOUNTED HAND SINK
 1 1/2" = 1'-0"



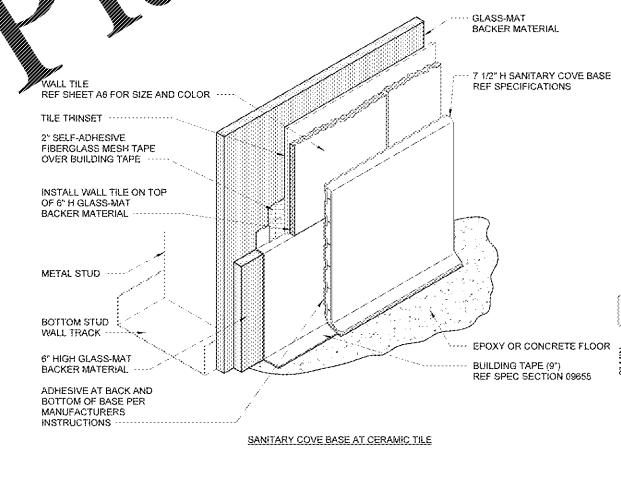
4 HAND SINK ELEVATION
 1/2" = 1'-0" RM SC: GA3 RM WMN: ...



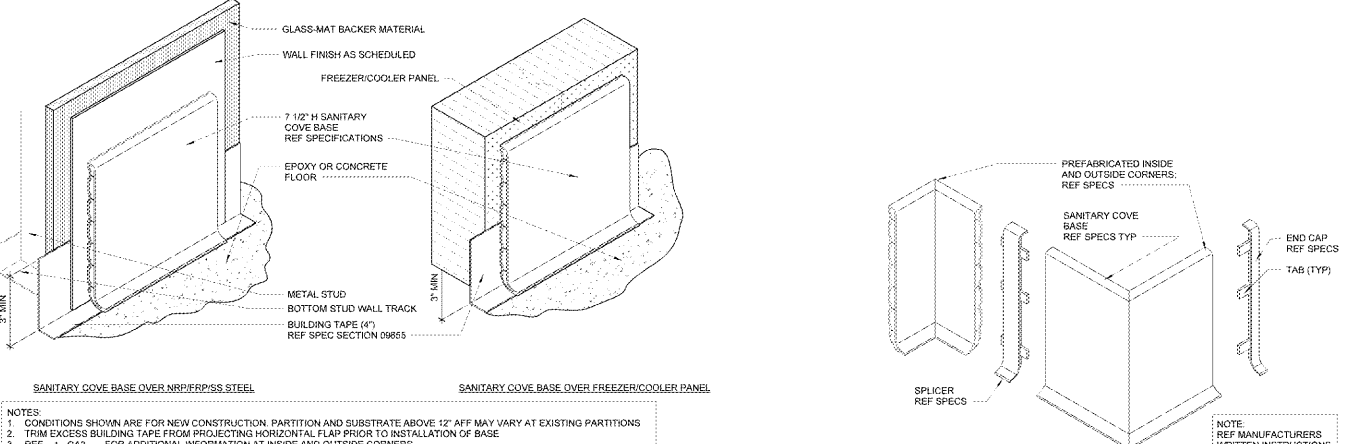
3 WALL DETAIL
 1 1/2" = 1'-0" RM SC: GA3 RM WMN: A3



2 SANITARY COVE BASE DETAILS (CONCRETE)
 3/4" = 1'-0"



1 SANITARY COVE BASE ACCESSORY DETAILS
 3/4" = 1'-0" RM SC: GA3 RM WMN: A3



- NOTES:**
1. CONDITIONS SHOWN ARE FOR NEW CONSTRUCTION. PARTITION AND SUBSTRATE ABOVE 12" AFF MAY VARY AT EXISTING PARTITIONS.
 2. TRIM EXCESS BUILDING TAPE FROM PROJECTING HORIZONTAL FLAT PRIOR TO INSTALLATION OF BASE.
 3. REF. 1-GA2 FOR ADDITIONAL INFORMATION AT INSIDE AND OUTSIDE CORNERS.
 4. GC TO PROVIDE MECHANICAL FASTENERS PER MANUFACTURERS WRITTEN INSTRUCTIONS.
 5. USE ACCESSORIES PROVIDED AND INSTALL SANITARY COVE BASE PER MANUFACTURERS INSTRUCTIONS.

EXPLANATION FOR REVISIONS

NO.	DATE	DESCRIPTION

CONSULTANTS

NO.	DATE	DESCRIPTION

Walmart
 FAYETTEVILLE, NC
 STORE NO.: 1261-248
 USRM067256 | PHOTO: JAMES EDWARD TURNER
 JOB NUMBER: 156-SC

ISSUE BLOCK

NO.	DATE	DESCRIPTION

CHECKED BY: JTSH
 DRAWN BY: RR
 PHOTO CYCLE: 02/28/2020
 DOC DATE: 04/15/2020

DOCUMENTS WITHOUT SIGNATURE AND REQUIRED SEAL OF ARCHITECT ARE NOT FOR CONSTRUCTION

GROCERY DETAILS

SHEET: **GA2**