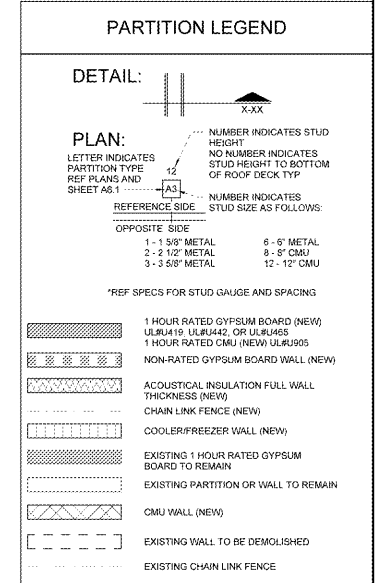


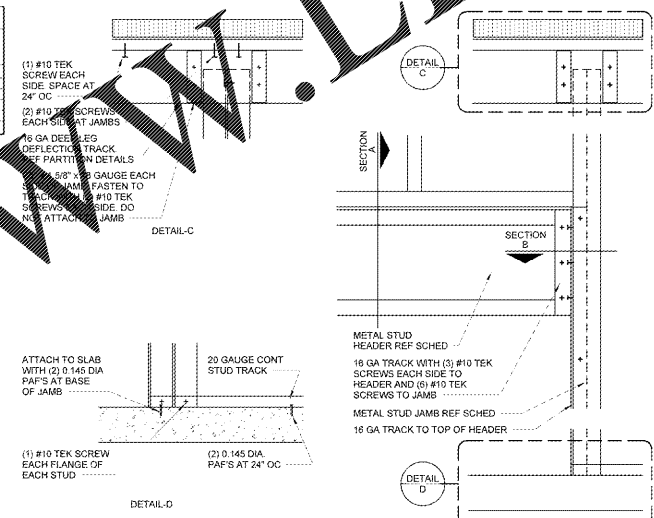
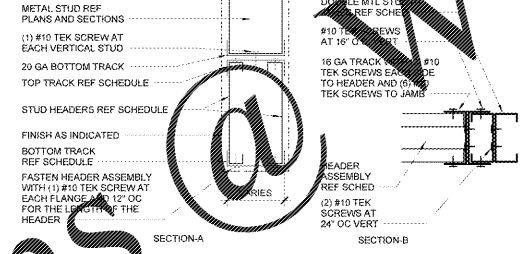
- ### PARTITION NOTES
- STUDS CONTINUE TO DECK UNO. REF CAPTURE TRACK DETAILS.
  - USE 1/2" GYPSUM BOARD ON NON-RATED PARTITIONS UNO.
  - USE 5/8" TYPE X GYPSUM BOARD ON FIRE RATED PARTITIONS.
  - CONTINUE FINISH MATERIAL TO A MINIMUM OF 4" ABOVE SUSPENDED CEILING SYSTEMS UNO.
  - WHERE NO CEILING IS INDICATED CONTINUE FINISH TO DECK UNO. MAINTAIN CLEARANCE BELOW STRUCTURE PER CAPTURE TRACK DETAILS.
  - STUD PARTITIONS REQUIRING A FIRE RATING OF ONE HOUR SHALL COMPLY WITH ULR419, ULR445 OR ULR442. MASONRY PARTITIONS REQUIRING ONE HOUR FIRE RATING SHALL COMPLY WITH ULR405.
  - MAXIMUM HEIGHT OF NON LOAD BEARING WALL ABOVE HEADER TO BE 4'-8"
  - REF SPECIFICATIONS FOR LATERAL BRACING OF STUD PARTITIONS
  - PROVIDE ALTERNATING DIAGONAL METAL STUD BRACING ABOVE THE CEILING FOR INTERIOR WALL STUDS THAT DO NOT GO TO DECK
  - USE GYPSUM BOARD BEHIND ALL FRP BOARD UNO
  - WHERE NO CEILING IS SCHEDULED, STOP 1/2" PLYWOOD SUBSTRATE AT 10'-0" AFF
  - PROVIDE FIRE BLOCKING AT FLOOR AND ROOF LEVELS. CONCEALED SPACES BETWEEN STAIRWAY STRINGERS, PENETRATIONS IN FLOOR/ROOF JOIST ASSEMBLIES AND OTHER LOCATIONS AS REQUIRED BY CODE
  - ROOMS THAT HAVE IMPACT RESISTANT GYP BD TO 48" AFF NEED 5/8" GYP BD TO 48" AFF
  - ON RESTROOM WALLS RECEIVING CERAMAIN TILE, UPPER PAINTED SECTION IS TO BE WATER RESISTANT GYPSUM BOARD IN RELIEF OF MANTLE MATERIAL
  - IF WALLS ARE TO BE MODIFIED OR BUILT OUT ANY NEW FIRE RATED PARTITIONS SHALL BE THE SAME AS ALL PENETRATIONS AND JOINTS ARE TO BE SEALED TO COMPLY WITH THE SPECIFICATIONS
  - PROPERLY SEAL ALL EXISTING PENETRATIONS IN EXISTING WALLS WITH AN UNSUPPORTED LENGTH GREATER THAN THE JOIST USED IN THE SPECIFICATIONS ARE TO BE BRACED ABOVE UNSUPPORTED LENGTH
  - FOR PARTITION WALL FRAMING DAMAGE REFERENCE 4-A-61



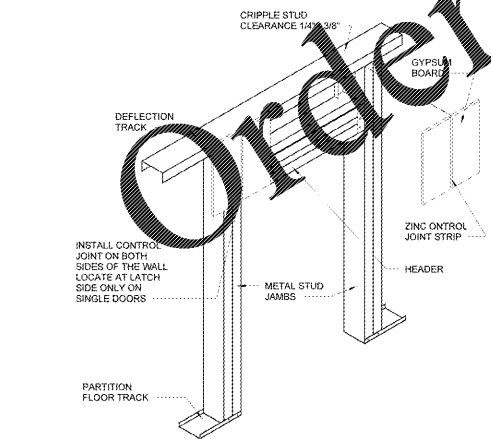
### INTERIOR NON-LOAD BEARING PARTITION HEADER SCHEDULE

HEADER LENGTH	HEADER MEMBERS	HEADER TRACKS	JAMB STUDS
UP TO 4'-0"	(2) C3 5/8x1 1/4x20 GA	(2) C3 5/8x20 GA	(2) C3 5/8x1 1/4x20 GA
UP TO 10'-0"	(2) C6x1 5/8x18 GA	(2) C6x18 GA	(2) C6x1 5/8x18 GA
OVER 10'-0" & UP TO 14'-0"	(2) C8x1 5/8x18 GA	(2) C8x18 GA	(2) C8x1 5/8x18 GA
OVER 14'-0" & UP TO 18'-0"	(2) C8x1 5/8x18 GA	(2) D9x18 GA	(2) C8x1 5/8x18 GA
OVER 18'-0" & UP TO 20'-0"	(2) C10x1 5/8x18 GA	(2) D8x18 GA	(2) C8x1 5/8x18 GA
OVER 20'-0" & UP TO 24'-0"	(2) C12x1 5/8x18 GA	(2) C8x18 GA	(2) C8x1 5/8x18 GA

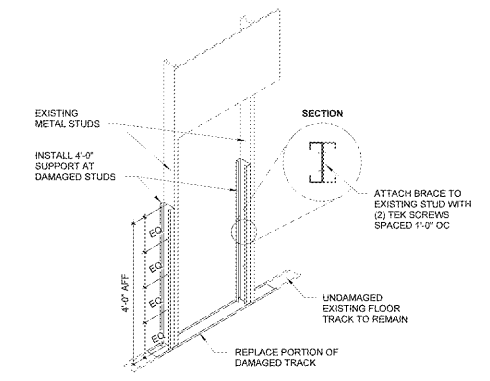
- ### NOTES:
- MAX WALL HEIGHT ABOVE HEADER ASSEMBLY IS 14'-0"
  - SPLICING OF HEADER AND JAMB MEMBERS IS NOT PERMITTED
  - MAX SPAN FOR OPENINGS TO RECEIVE INFILL BELOW THE HEADER IS 10'-0"
  - JAMBS NOT TO DECK ARE TO BE BRACED IN ACCORDANCE WITH THE PARTITION BRACING DETAILS. 3 5/8" JAMBS BEYOND 13'-4" ARE TO BE BRACED ABOVE THE OPENING AND SUCH THAT THE MAXIMUM UNBRACED LENGTH IS NOT EXCEEDED
  - FRAMING MEMBERS ARE NOT SIZED FOR VERTICAL LOAD OTHER THAN THE PORTION OF WALL ABOVE THE OPENING.



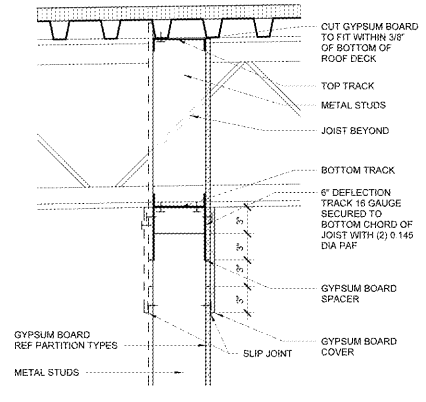
6 HEADER CONNECTION DETAIL



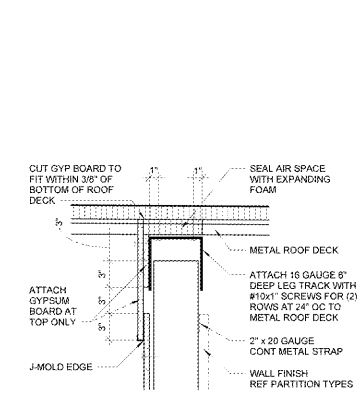
5 CONTROL JOINT AT DOOR JAMB  
12" x 1'-0"



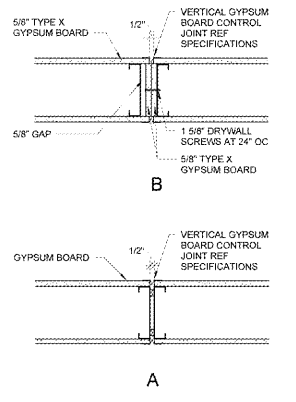
4 REPLACEMENT FRAMING DETAIL  
12" x 1'-0"



3 PARTITION ATTACHMENT AT PERPENDICULAR JOIST  
1 1/2" x 1'-0"



2 NON-RATED CAPTURE TRACK  
1 1/2" x 1'-0"



1 GYPSUM BOARD CONTROL JOINT  
1 1/2" x 1'-0"



EXPLANATION FOR REVISIONS

NO. DESCRIPTION

DATE

BY

APP. BY

CONSULTANTS

Walmart  
FAYETTEVILLE, NC

STORE NO: 1261-248

USRM/07/256 | PHOTO: 196 SC

JOB NUMBER:

### ISSUE BLOCK

NO.	DESCRIPTION	DATE

CHECKED BY: JTSH

DRAWN BY: RR

PROTO CYCLE: 02/8/2020

DOC DATE: 04/15/2020

DOCUMENTS WITHOUT SIGNATURE AND REQUIRED SEAL OF ARCHITECT ARE NOT FOR CONSTRUCTION

JAMES EDWARD TURNER  
ARCHITECT OF RECORD

PARTITION TYPES AND WALL DETAILS

SHEET: A6.1