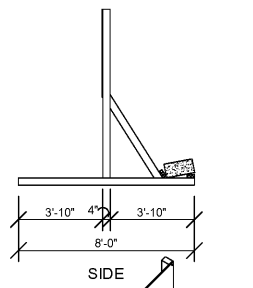
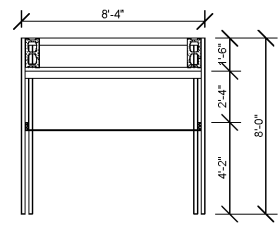


FRONT

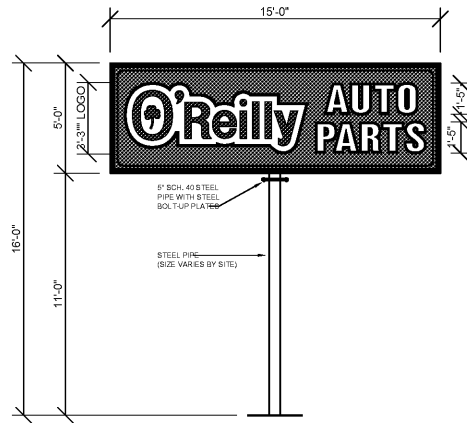


SIDE



TOP

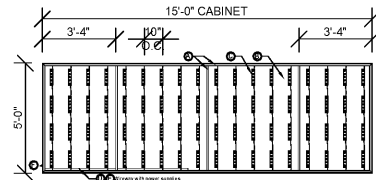
**1 COMING SOON
TEMPORARY CONSTRUCTION SIGN**
SG1.2 SCALE: 1/4" = 1'-0"



GROUND SIGN ELEVATION

"O'Reilly" Cloud Logo with "AP" channel letters on 7" (h) x 1" (d) wireways. Wireways paint to: TBD
 "O'Reilly" Cloud Logo is formed polycarb with double embossment with 2nd surface painted graphics. Paint match to: Green (PMS# 342c), Black and White.
 "AP" to have formed polycarb caps with 1/4" letter "bumps". Black 5" aluminum coil returns. 2nd surface Black and White paint. WHITE LED Illumination.

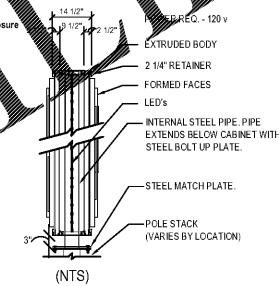
2 GROUND SIGN ELEVATION
SG1.2 SCALE: 1/4" = 1'-0"



15'-0" CABINET

- ① 14-1/2" deep extruded cabinet with support structure and 2 1/4" retainers
- ② Internal steel pipe with external steel bolt-up plate(s)
- ③ GE-Tetra PowerStrip DS White LED's. Part #GEWHDS56 (7100K) 6 LED's per module (3 LED's per side) on GE-Tetra Mounting Rails. Part #GEDSRLO8. Rails on 10" centers. 64 total modules.
- ④ GE-Tetra Power Supplies. Part #GEPS24-180U 24 Vol: 90-305VAC 50/60 HZ Load capacity: 16 modules per power supply. Total of four (4) per display.
- ⑤ Fabricated aluminum internal power supply wireway.
- ⑥ Disconnect Switch.

- ⑦ Faces are formed out of lexan with 2" draw. "O'Reilly" graphics are double embossed. "Auto Parts" copy is single embossed with painted graphics on 2nd surface. Graphics to match PMS 200c Red, PMS 342c Green Black and White.
- ⑧ Extruded cabinet with 2 1/4" retainers. Internal steel pipe with external steel bolt-up plate(s). Vertical GE (GEWHDS56) White DS LED illumination. Paint cabinet to: Gloss Black. Internal pipe paint exposure calculation: C10.
- ⑨ Cabinet to be installed with bolt-up plate(s). Paint to: Gloss Black



(NTS)

GENERAL NOTES

- A REFER TO PROJECT MANUAL FOR ADDITIONAL REQUIREMENTS.
- B CONTACT OWNER'S OR TENANT'S DESIGNATED PROJECT ADMINISTRATOR FOR QUESTIONS OR CLARIFICATIONS.
- C PERMANENT SIGNAGE OWNER FURNISHED AND INSTALLED. (REFER TO SCOPE OF WORK SCHEDULE). SIGNAGE GRAPHICS PROVIDED FOR REFERENCE ONLY (N.I.C.) AND CONTRACTOR'S COORDINATION WITH SPECIFIC PROJECT CONSTRUCTION CONDITIONS.
- D SITE SIGN ROUGH-IN ELECTRICAL TO BE PROVIDED BY CONTRACTOR.
- E REQUIRED GOVERNMENTAL PERMITS FOR PERMANENT TYPE SIGNAGE TO BE PROVIDED BY CONTRACTOR COMPANY PER OWNER'S DIRECTION (N.I.C.).
- F "COMING SOON" TEMPORARY CONSTRUCTION SIGN TO BE PROVIDED BY GENERAL CONTRACTOR. APPLIED SIGNAGE GRAPHICS TO BE OWNER FURNISHED AND GENERAL CONTRACTOR INSTALLED. SITE TEMPORARY CONSTRUCTION SIGN ON SITE SO AS TO BE VISIBLE TO PUBLIC FROM RIGHT-OF-WAY.
- G UNLESS OTHERWISE INDICATED, SITE POLE SIGN FOUNDATION CONSTRUCTION BY SIGN CONTRACTOR (BY OTHERS - NOT IN CONTRACT) AND SITE MONUMENT SIGN FOUNDATION CONSTRUCTION BY GENERAL CONTRACTOR (BASE BID).

SPECIAL NOTE:
SIGN DESIGN BY OTHERS. REFER TO SIGN CONTRACTOR'S SHOP DRAWINGS FOR ADDITIONAL REQUIREMENTS.

NOTE:
REFER TO SHEET S1.2 FOR SIGN FOUNDATION SYSTEM STRUCTURAL REQUIREMENTS.

Order Plans @ WWW.LDIDLINE.COM

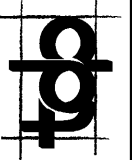


ARCHITECT OF RECORD
JOHN TORGERON
ARCHITECT LICENSE NUMBER
13895

SHEETS BEARING THIS SEAL ARE AUTHENTICATED. RESPONSIBILITY FOR ALL OTHER PLANS, SPECIFICATIONS OR INSTRUMENTS ARE DISCLAIMED.

torgerson DESIGN partners

116 N. 2ND AVENUE
OZARK, MO 65721
P (417) 581-8889
F (417) 581-9002



PROJECT:
NEW O'REILLY AUTO PARTS STORE
2801 SOUTH MIAMI BLVD.
DURHAM, NC 27703

SITE SIGNAGE DETAILS

DRAWN BY: **SM** CHECKED BY: **KR**
DATE: **12/20/19**
REVISION:
PROJECT NUMBER: **19261-DC1**

SHEET NUMBER
SG1.2