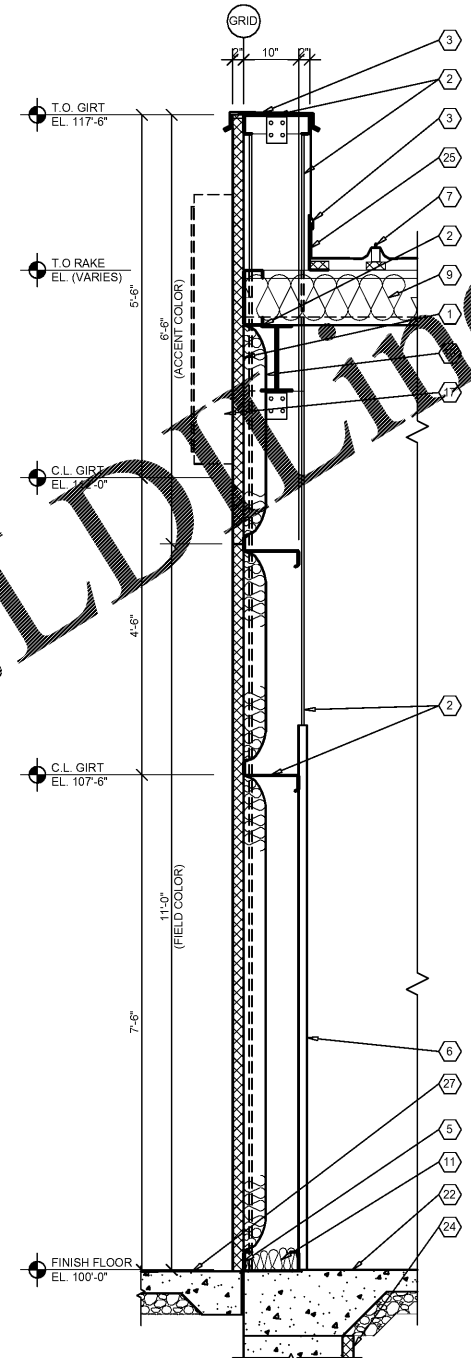


Order Plans @ www.lideline.com



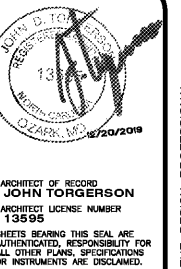
1 WALL SECTION
A3.3 SCALE: 3/4" = 1'-0"

GENERAL NOTES

- (A) REFER TO PROJECT MANUAL AND SCOPE OF WORK SCHEDULE FOR ADDITIONAL REQUIREMENTS.
- (B) REFER TO CIVIL, STRUCTURAL, MECHANICAL, ELECTRICAL, PLUMBING, AND PRE-ENGINEERED METAL BUILDING (P.E.M.B.) SHOP DRAWINGS FOR ADDITIONAL REQUIREMENTS.
- (C) REFER TO INTERIOR AND EXTERIOR FINISH SCHEDULES FOR MATERIAL TYPES, COLORS AND FINISHES.
- (D) DIMENSIONS ARE TO FACE OF CONCRETE, FRAMING, OR CENTER LINE OF STRUCTURE UNLESS OTHERWISE INDICATED.
- (E) NOT ALL INSULATION SHOWN FOR CLARITY.

KEY NOTES

- 1 PRE-ENGINEERED METAL BUILDING EXTERIOR WALL PANEL SYSTEM.
- 2 PRE-ENGINEERED METAL BUILDING PRIMARY AND SECONDARY STRUCTURAL FRAMING SYSTEMS.
- 3 PRE-ENGINEERED METAL BUILDING SHEET METAL FLASHING, COUNTER-FLASHING, CONTINUOUS CLEATS, DRIPS CLOSURES, TRANSITIONS, COPINGS AND ACCESSORIES AS REQUIRED.
- 4 (NOT USED)
- 5 PRE-ENGINEERED METAL BUILDING BASE ANGLE OR GIRT WITH PANEL CLOSURE AND SEALANT SYSTEM.
- 6 PRE-ENGINEERED METAL BUILDING INTERIOR WALL LINER PANEL.
- 7 PRE-ENGINEERED METAL BUILDING ROOF PANEL SYSTEM WITH THERMAL SPACER BLOCKS (R-5 MIN.).
- 8 (NOT USED)
- 9 PRE-ENGINEERED METAL BUILDING ROOF INSULATION (R-36) LINER SYSTEM. (REFER TO SCOPE OF WORK SCHEDULE). VAPOR BARRIER OVER HIGH STRENGTH STEEL SUSPENSION STRAPS ATTACHED TO BOTTOM OF PRE-ENGINEERED METAL BUILDING ROOF PURLINS WITH (1) LAYER 8" (R-25) UN-FACED BATT INSULATION PARALLEL WITH ROOF PURLIN CAVITY AND (1) LAYER 3 1/2" (R-11) UN-FACED BATT INSULATION PERPENDICULAR OVER TOP OF ROOF PURLINS.
- 10 PRE-ENGINEERED METAL BUILDING WALL INSULATION (R-13) WITH VAPOR BARRIER SYSTEM. (REFER TO SCOPE OF WORK SCHEDULE).
- 11 BATT INSULATION (R-19) WITH FOIL FACE VAPOR BARRIER (CONTRACTOR FURNISHED AND INSTALLED).
- 12 (NOT USED)
- 13 (NOT USED)
- 14 (NOT USED)
- 15 (NOT USED)
- 16 (NOT USED)
- 17 SURFACE MOUNTED WALL SIGN, OWNER FURNISHED AND INSTALLED. (REFER TO SCOPE OF WORK SCHEDULE). PROVIDE BACKING AND ELECTRICAL ROUGH-IN. REFER TO ELECTRICAL DRAWINGS.
- 18 (NOT USED)
- 19 (NOT USED)
- 20 (NOT USED)
- 21 (NOT USED)
- 22 FLOORING AND BASE, REFER TO INTERIOR FINISH SCHEDULE FOR TYPES AND LOCATIONS.
- 23 (NOT USED)
- 24 RIGID INSULATION BOARD WHERE INDICATED ON STRUCTURAL DRAWINGS.
- 25 PRE-ENGINEERED METAL BUILDING TRANSITION SUPPORT BENT PLATE.
- 26 (NOT USED)
- 27 FINISH LAWN, PAVEMENT OR SIDEWALK, SLOPE TO DRAIN AWAY FROM BUILDING. REFER TO CIVIL DRAWINGS.



ARCHITECT OF RECORD
JOHN TORGERSON
 ARCHITECT LICENSE NUMBER
 13895
 SHEETS BEARING THIS SEAL ARE AUTHENTICATED. RESPONSIBILITY FOR ALL OTHER PLANS, SPECIFICATIONS OR INSTRUMENTS ARE DISCLAIMED.

torgerson DESIGN partners
 116 N. 2ND AVENUE
 OZARK, MO 65721
 P (417) 581-8889
 F (417) 581-9002

PROJECT:
NEW O'REILLY AUTO PARTS STORE
 2801 SOUTH MIAMI BLVD.
 DURHAM, NC 27703

O'Reilly AUTO PARTS
 CORPORATE OFFICES
 833 SOUTH PATTERSON
 SPRINGFIELD, MISSOURI 65802
 (417) 882-2674 TELEPHONE

DRAWN BY: **SM** CHECKED BY: **KR**
 DATE: **12/20/19**
 REVISION:
 PROJECT NUMBER:
19261-DC1
 SHEET NUMBER

A3.3

NOTE:
 REFER TO STRUCTURAL DRAWINGS FOR FOOTINGS,
 FOUNDATIONS, SLABS AND REINFORCEMENT.

© COPYRIGHT 2016 - DESIGNS, DRAWINGS AND SPECIFICATIONS ARE INSTRUMENTS OF SERVICE AND ARE THE PROPERTY OF THE DESIGN PROFESSIONAL. REPRODUCTION PROHIBITED WITHOUT THE EXPRESSED WRITTEN CONSENT OF THE DESIGN PROFESSIONAL.