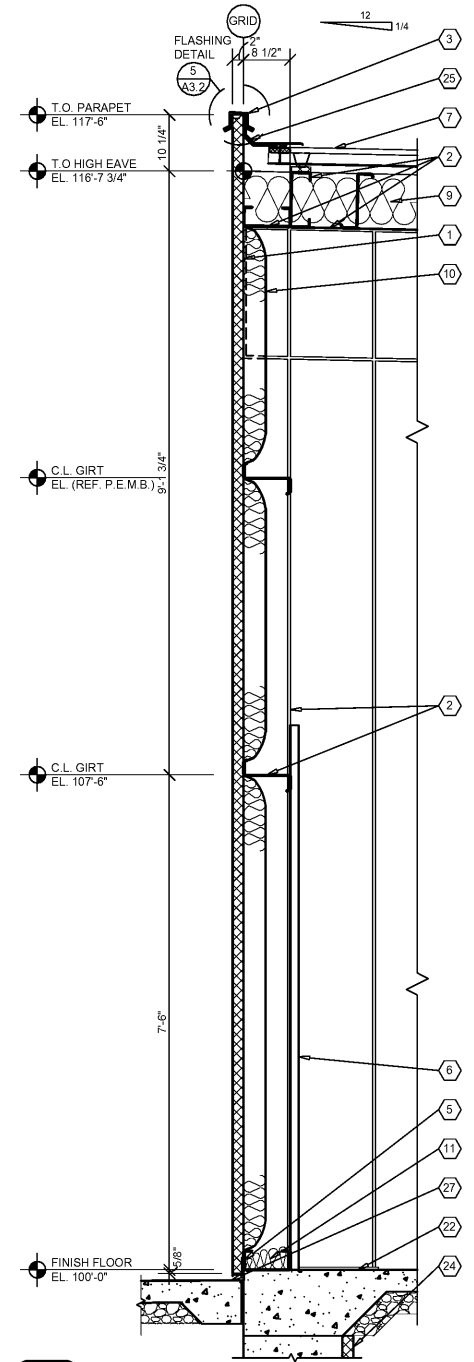


### GENERAL NOTES

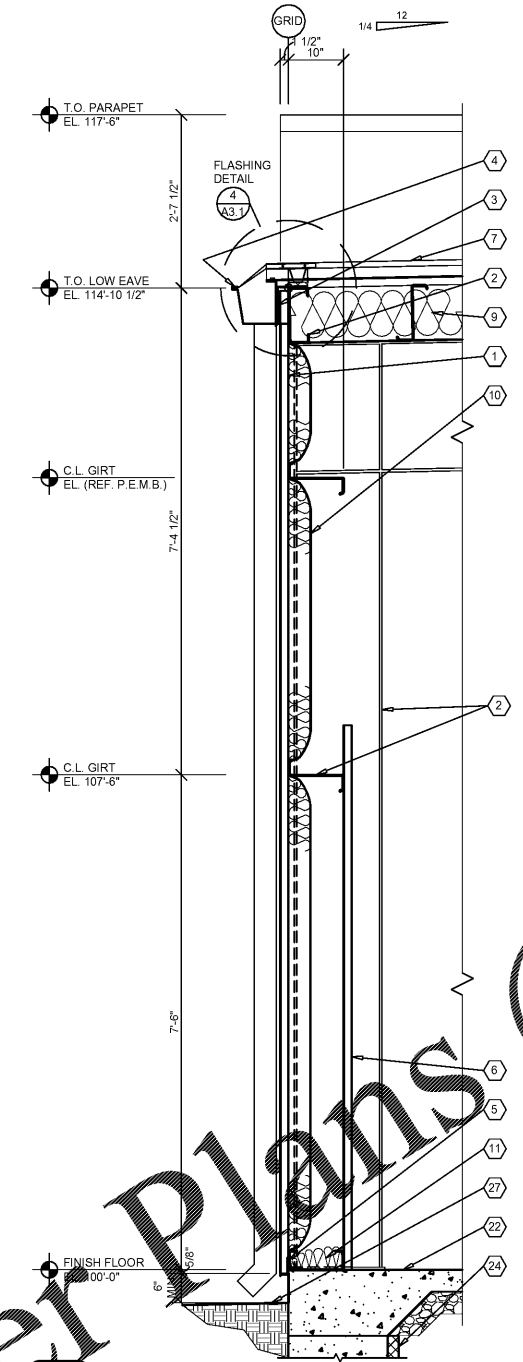
- (A) REFER TO PROJECT MANUAL AND SCOPE OF WORK SCHEDULE FOR ADDITIONAL REQUIREMENTS.
- (B) REFER TO CIVIL, STRUCTURAL, MECHANICAL, ELECTRICAL, PLUMBING, AND PRE-ENGINEERED METAL BUILDING (P.E.M.B.) SHOP DRAWINGS FOR ADDITIONAL REQUIREMENTS.
- (C) REFER TO INTERIOR AND EXTERIOR FINISH SCHEDULES FOR MATERIAL TYPES, COLORS AND FINISHES.
- (D) DIMENSIONS ARE TO FACE OF CONCRETE, FRAMING, OR CENTER LINE OF STRUCTURE UNLESS OTHERWISE INDICATED.
- (E) NOT ALL INSULATION SHOWN FOR CLARITY.

### KEY NOTES

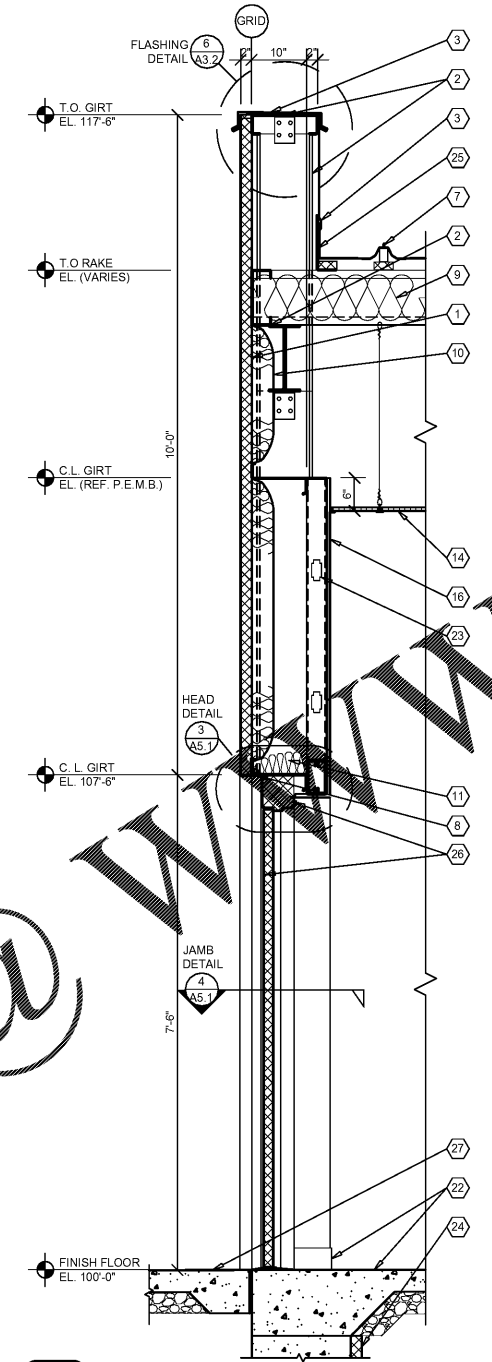
- 1 PRE-ENGINEERED METAL BUILDING EXTERIOR WALL PANEL SYSTEM.
- 2 PRE-ENGINEERED METAL BUILDING PRIMARY AND SECONDARY STRUCTURAL FRAMING SYSTEMS.
- 3 PRE-ENGINEERED METAL BUILDING SHEET METAL FLASHING, COUNTER FLASHING, CONTINUOUS CLEATS, DRIPS CLOSURES, TRANSITIONS, COPINGS AND ACCESSORIES AS REQUIRED.
- 4 PRE-ENGINEERED METAL BUILDING GUTTER AND DOWNSPOUT SYSTEM. REFER TO EXTERIOR. REFER TO P.E.M.B. SHOP DRAWINGS FOR SIZES.
- 5 PRE-ENGINEERED METAL BUILDING BASE ANGLE OR GIRT WITH PANEL CLOSURE AND SEALANT SYSTEM.
- 6 PRE-ENGINEERED METAL BUILDING INTERIOR WALL LINER PANEL.
- 7 PRE-ENGINEERED METAL BUILDING ROOF PANEL SYSTEM WITH THERMAL SPACER BLOCKS (R-5 MIN.).
- 8 PRE-ENGINEERED METAL BUILDING SOFFIT PANEL SYSTEM OR FIELD FABRICATED SHEET METAL CLADDING SYSTEM TO MATCH FRONT EXTERIOR WALL PANELS. REFER TO PEMB DRAWINGS FOR REQUIREMENTS.
- 9 PRE-ENGINEERED METAL BUILDING ROOF INSULATION (R-36) LINER SYSTEM. (REFER TO SCOPE OF WORK SCHEDULE). VAPOR BARRIER OVER HIGH STRENGTH STEEL SUSPENSION STRAPS ATTACHED TO BOTTOM OF PRE-ENGINEERED METAL BUILDING ROOF PURLINS WITH (1) LAYER 8" (R-25) UN-FACED BATT INSULATION PARALLEL WITH ROOF PURLIN CAVITY AND (1) LAYER 3 1/2" (R-11) UN-FACED BATT INSULATION PERPENDICULAR OVER TOP OF ROOF PURLINS.
- 10 PRE-ENGINEERED METAL BUILDING WALL INSULATION (R-13) WITH VAPOR BARRIER SYSTEM. (REFER TO SCOPE OF WORK SCHEDULE).
- 11 BATT INSULATION (R-19) WITH FOIL FACE VAPOR BARRIER (CONTRACTOR FURNISHED AND INSTALLED).
- 12 (NOT USED)
- 13 (NOT USED)
- 14 SUSPENDED ACOUSTICAL LAY - IN CEILING SYSTEM. REFER TO INTERIOR FINISH SCHEDULE FOR TYPES AND LOCATIONS.
- 15 (NOT USED)
- 16 5/8" TYPE "X" GYPSUM BOARD (PAINT).
- 17 (NOT USED)
- 18 (NOT USED)
- 19 (NOT USED)
- 20 (NOT USED)
- 21 (NOT USED)
- 22 FLOORING AND BASE. REFER TO INTERIOR FINISH SCHEDULE FOR TYPES AND LOCATIONS.
- 23 3 5/8" (20 GA.) COLD FORM METAL STUD FRAMING AT 24" O.C., REFER TO FLOOR PLAN AND INTERIOR WALL TYPES.
- 24 RIGID INSULATION BOARD WHERE INDICATED ON STRUCTURAL DRAWINGS.
- 25 PRE-ENGINEERED METAL BUILDING TRANSITION SUPPORT BENT PLATE.
- 26 DOOR AND FRAME SYSTEM, REFER TO FLOOR PLAN AND SCHEDULES FOR TYPES.
- 27 FINISH LAWN, PAVEMENT OR SIDEWALK, SLOPE TO DRAIN AWAY FROM BUILDING. REFER TO CIVIL DRAWINGS.



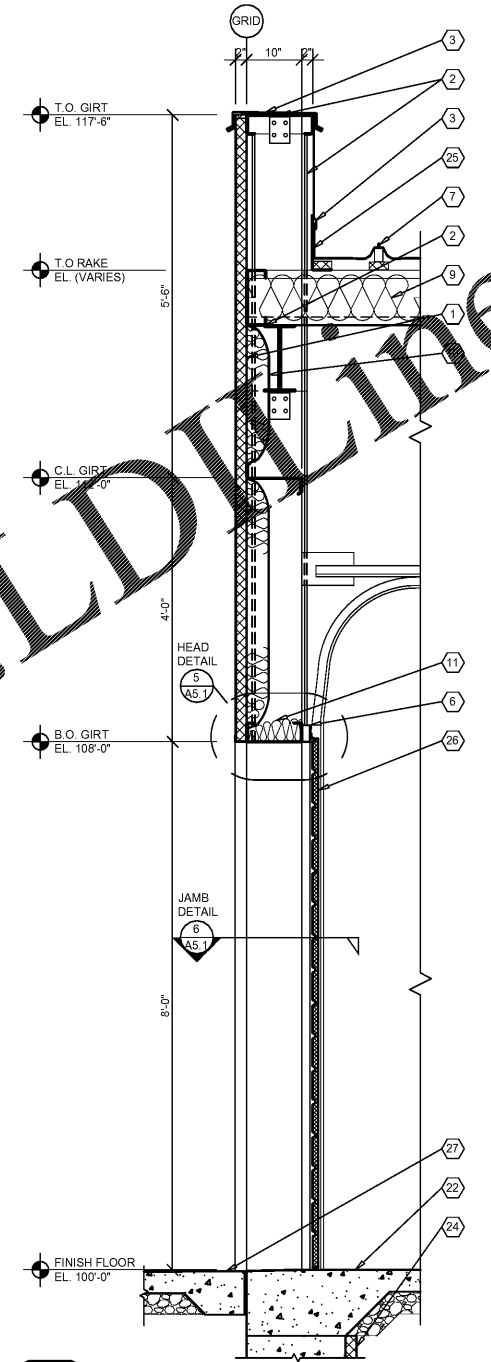
**1 WALL SECTION**  
A3.2 SCALE: 3/4" = 1'-0"



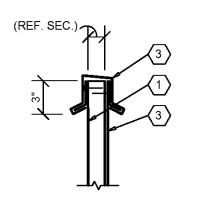
**2 WALL SECTION**  
A3.2 SCALE: 3/4" = 1'-0"



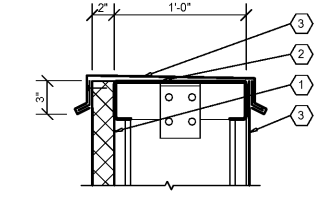
**3 WALL SECTION**  
A3.2 SCALE: 3/4" = 1'-0"



**4 WALL SECTION**  
A3.2 SCALE: 3/4" = 1'-0"



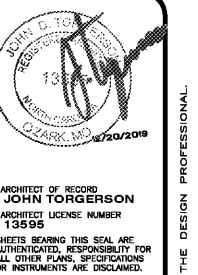
**5 SECTION**  
A3.2 SCALE: 1 1/2" = 1'-0"



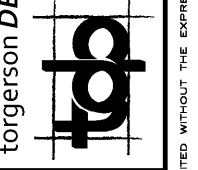
**6 SECTION**  
A3.1 SCALE: 1 1/2" = 1'-0"

NOTE:  
REFER TO STRUCTURAL DRAWINGS FOR FOOTINGS,  
FOUNDATIONS, SLABS AND REINFORCEMENT.

Order Plans @ WWW.LDLINE.COM



ARCHITECT OF RECORD  
**JOHN TORGERSON**  
ARCHITECT LICENSE NUMBER  
13895  
SHEETS BEARING THIS SEAL ARE  
AUTHENTICATED. RESPONSIBILITY FOR  
ALL OTHER PLANS, SPECIFICATIONS  
OR INSTRUMENTS ARE DISCLAIMED.



PROJECT:  
**NEW O'REILLY AUTO PARTS STORE**  
2801 SOUTH MIAMI BLVD.  
DURHAM, NC 27703

**O'Reilly AUTO PARTS**  
CORPORATE OFFICES  
833 SOUTH PATTERSON  
SPRINGFIELD, MISSOURI 65802  
(417) 882-2674 TELEPHONE

DRAWN BY: **SM** CHECKED BY: **KR**  
DATE: **12/20/19**  
REVISION:  
PROJECT NUMBER:  
**19261-DC1**  
SHEET NUMBER

**A3.2**

© COPYRIGHT 2016 - DESIGNS, DRAWINGS AND SPECIFICATIONS ARE INSTRUMENTS OF SERVICE AND ARE THE PROPERTY OF THE DESIGN PROFESSIONAL. REPRODUCTION PROHIBITED WITHOUT THE EXPRESSED WRITTEN CONSENT OF THE DESIGN PROFESSIONAL.