

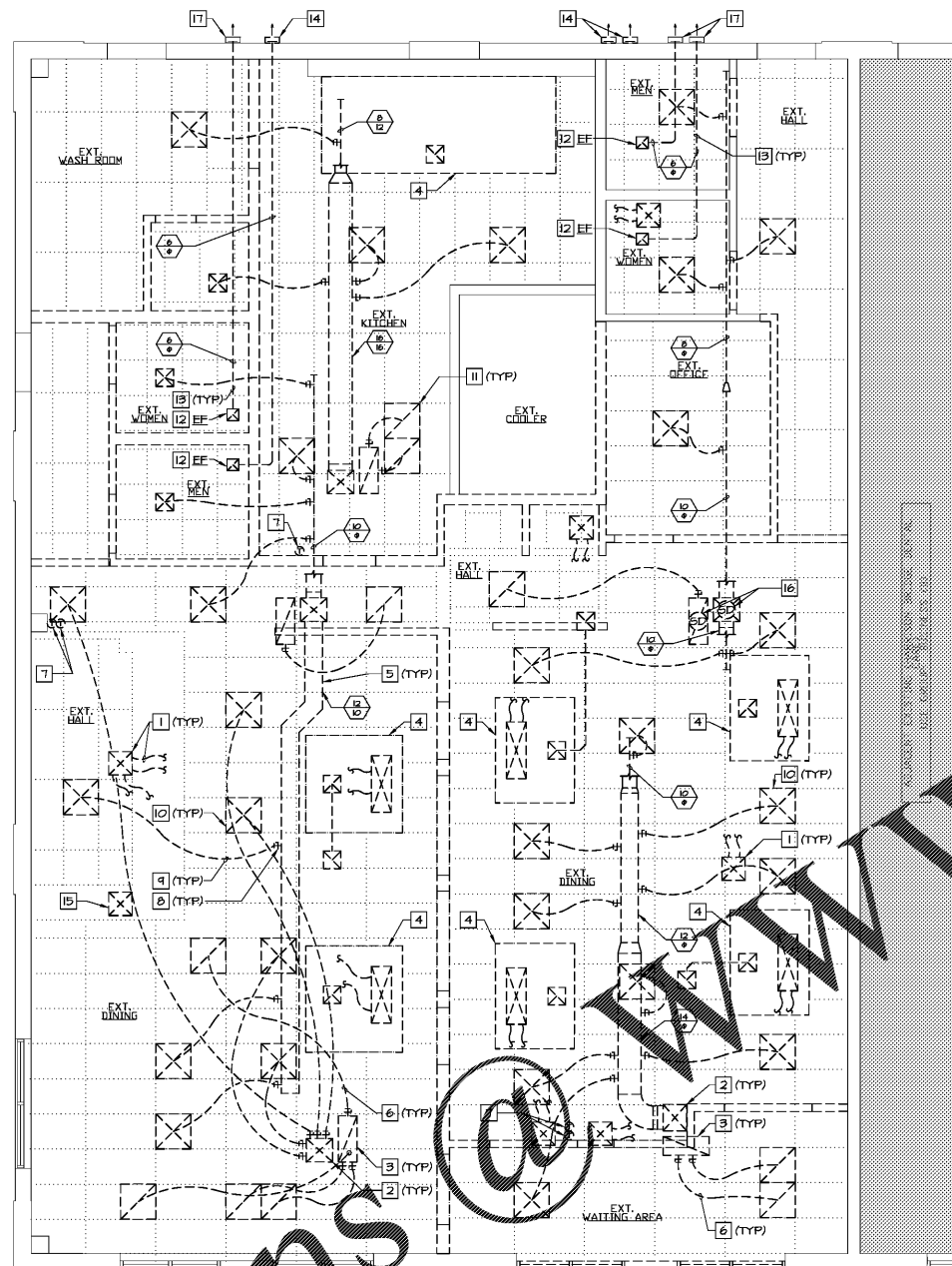
NO.	REVISION	DATE
FILE	DRAWN	ISSUED
20013J	TAB	06/19/2020

SHEET TITLE
Demolition HVAC Plan

SHEET NUMBER

71.01

Bid/Permit Documents



DRAWING NOTES

- 1 REMOVE MAKE-UP AIR DUCTWORK SERVING GREASE HOODS LOCATED ABOVE CEILING AND EXTENDING UP THROUGH ROOF TO MAKE-UP AIR UNIT.
- 2 REMOVE SUPPLY AIR DUCTWORK EXTENDING DOWN FROM ASSOCIATED ROOF TOP UNIT.
- 3 REMOVE RETURN AIR DUCTWORK EXTENDING DOWN FROM ASSOCIATED ROOF TOP UNIT.
- 4 REMOVE GREASE HOOD AND ALL ASSOCIATED ACCESSORIES, SUPPORTS, PIPING AND EXHAUST AIR DUCTWORK EXTENDING UP THROUGH ROOF.
- 5 REMOVE SUPPLY AIR DUCTWORK THROUGHOUT.
- 6 REMOVE RETURN AIR DUCTWORK THROUGHOUT.
- 7 REMOVE WALL MOUNTED PROGRAMMABLE THERMOSTAT AS SHOWN.
- 8 REMOVE SPIN-IN TAP AS SHOWN.
- 9 REMOVE FLEX DUCT RUNOUT AS SHOWN.
- 10 REMOVE SUPPLY AIR DEVICE AS SHOWN.
- 11 REMOVE RETURN AIR DEVICE AS SHOWN.
- 12 REMOVE CEILING MOUNTED EXHAUST FAN AND ALL ASSOCIATED ACCESSORIES AS SHOWN.
- 13 REMOVE TOILET EXHAUST AIR DUCTWORK ABOVE CEILING AS SHOWN.
- 14 REMOVE EXTERIOR WALL CAP. CONTRACTOR SHALL PATCH AND SEAL EXTERIOR WALL TO MATCH ADJACENT SURFACES AND SEAL WEATHER TIGHT.
- 15 REMOVE DUCTWORK EXTENDING UP THROUGH ROOF.
- 16 REMOVED EXISTING SMOKE DETECTORS AND ASSOCIATED CONTROLS.
- 17 EXISTING EXTERIOR WALL CAP TO REMAIN. MAKE READY FOR REUSE. CONTRACTOR SHALL VERIFY WALL PENETRATIONS ARE SEALED WEATHER TIGHT.

DEMOLITION HVAC PLAN
 SCALE: 1/4" = 1'-0"



GENERAL NOTES:

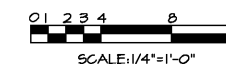
1. ALL ROOF WORK SHALL BE PERFORMED BY BUILDING OWNER'S ROOFING CONTRACTOR - COORDINATE WITH OWNER PRIOR TO PERFORMING WORK.
2. CONTRACTOR SHALL MAKE ALLOWANCES FOR OPEN CEILING CONDITION IN NEW RETAIL/SALES AREA. ALL EXISTING/NEW HVAC EQUIPMENT INCLUDING DUCTWORK, HANGERS, SUPPORTS, CONTROLS, WIRING, ACCESSORIES, ETC. SHALL BE FIELD VERIFIED IN THEIR ENTIRETY FOR CONFORMANCE TO OPEN CEILING CONDITIONS DESCRIBED ON HVAC PLAN SHEET 71.03. CONTRACTOR SHALL FIELD COORDINATE ALL MODIFICATIONS OF ALL HVAC EQUIPMENT PRIOR TO START OF WORK WITH GENERAL CONTRACTOR. REFER TO HVAC PLAN, SHEET 71.03, AND ARCHITECTURAL DRAWINGS FOR ADDITIONAL INFORMATION.

DEMOLITION LEGEND:

- EXISTING WORK TO REMAIN.
- - - - - EXISTING WORK TO BE DEMOLISHED.

GENERAL NOTES:

1. CONTRACTOR SHALL FIELD VERIFY LOCATIONS OF ALL EQUIPMENT, DUCTWORK, AND APPURTENANCES PRIOR TO DEMOLITION.
2. SEE SHEET 70.01 FOR SPECIFIC DIRECTIONS ON THE RE-USE OF ANY MECHANICAL EQUIPMENT.



Order Plans

WWW.LDILINE.COM