

GENERAL NOTES
 THIS SHEET ONLY

- CONTRACTOR SHALL PROVIDE BLOCKING AT THE FOLLOWING LOCATIONS: TELCO RACK, INVENTORY ROOM WALLS, GRAB BARS, HANDRAILS, WALL HUNG CABINETS AND SHELVES, HANGING GLASS WINDOW DISPLAYS AT STOREFRONTS, AND AT ALL OTHER LOCATIONS WHERE HANGING POSTERS, EQUIPMENT IS BEING WALL OR CEILING/SOFFIT HUNG - SEE DETAIL 2/36.01 FOR ADDITIONAL INFORMATION.
- PROVIDE CONTINUOUS 3/4" x 20" FIRE RATED PLYWOOD BLOCKING WITH BOTTOM AT 70" A.F.F. BEHIND SHELF AND MONITOR MOUNTED TO WALL - SEE TYPICAL WALL BLOCKING DETAILS ON SHEET 36.01 FOR ADDITIONAL INFORMATION.
- PROVIDE STRAPPING WITH WALL CASE FIXTURES - SEE DETAILS ON SHEET 36.01 FOR ADDITIONAL INFORMATION.
- FOR ALL WALL TYPES THAT CONTINUE TO DECK - SEE DETAIL 1/36.01 FOR BLUPE CLIP DETAIL.
- REFER TO SHEET 10.02 FOR ADA FIXTURE MOUNTING HEIGHTS.
- REFER TO FURNITURE, FIXTURE, & EQUIPMENT PLAN SHEET 38.02 FOR FIXTURE INFORMATION.
- SEE FINISH SCHEDULE SHEET 38.01 FOR ALL FINISHES.
- WALL MOUNTED DISPLAY FIXTURES INCLUDE VENDOR INSTALLED WALL BASE.

CONSTRUCTION NOTES
 THIS SHEET ONLY

- ALL PROJECT GENERAL NOTES APPLY.
- DISCREPANCIES: NOTIFY PROJECT MANAGER AND CONSTRUCTION MANAGER OF ALL EXISTING CONSTRUCTION NOT SPECIFICALLY NOTED ON THE DRAWINGS; PROCEED IN THOSE ITEMS ONLY AS DIRECTED.
- SEE SHEET 38.01 FOR FINISH SCHEDULE.
- ALL DIMENSIONS ARE FINISH DIMENSIONS UNLESS NOTED OTHERWISE.
- FROM (2) ROWS MINIMUM 8" HIGH BLOCKING ON STOREFRONT WALLS WITH CABINETS IN DECK OF HOUSING TO PROVIDE MOUNTING SURFACE FOR WALL MOUNTED FIXTURES. COORDINATE EXACT POSITIONING WITH MILL WORK AND FINISH ITEMS FOR FINAL LOCATION - SEE SHEET 36.01 FOR DETAILS.
- ANY DRYWALL FINISH WHICH IS EXISTING TO REMAIN SHALL BE PATCHED, PRIME, AND PAINTED TO "LIKE NEW" CONDITION AND ACCEPT NEIGHBOR'S. CONTRACTOR SHALL DETERMINE PATCHING METHOD, OR IF DRYWALL WILL NEED TO BE REMOVED OR REPLACED TO ACHIEVE DESIRED FINISH. EXCEPT FOR CHERRY WALLS WHERE ITEMS ARE REMOVED, BUT NOT LIMITED TO ELECTRICAL BOXES, TRIM, MIRRORS, DOOR JAMBS, WALLCOVERING, ETC.
- ALL DRYWALL SHALL BE LEVEL (5) FINISH QUALITY.

LEGEND
 THIS SHEET ONLY

- EXISTING WALL/DOOR/CASEWORK, ETC TO REMAIN
- LOCATION OF NEW WALL TO BE CONSTRUCTED
- WALL SYSTEM TO BOTTOM OF DECK

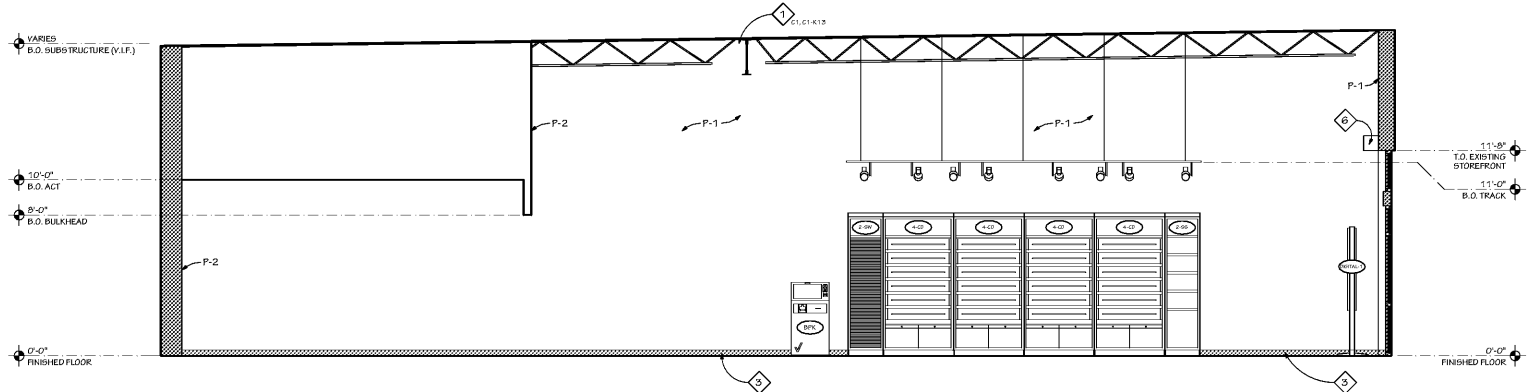
FIXTURE - KEYNOTES
 THIS SHEET ONLY

- DEVICE RACK
- WALLCASE
- WALLCASE
- WALLCASE
- FREESTANDING WALLCASE
- FREESTANDING WALLCASE
- WALLCASE
- SHELF
- MONITOR
- BILL FINDER
- PARENT BENCH
- FREESTANDING STOREFRONT DISPLAY
- COLLABORATION BAR
- BRAND WALL
- RED CHECK
- BLACK/WHITE PHOTO WALL w/PLAQUE

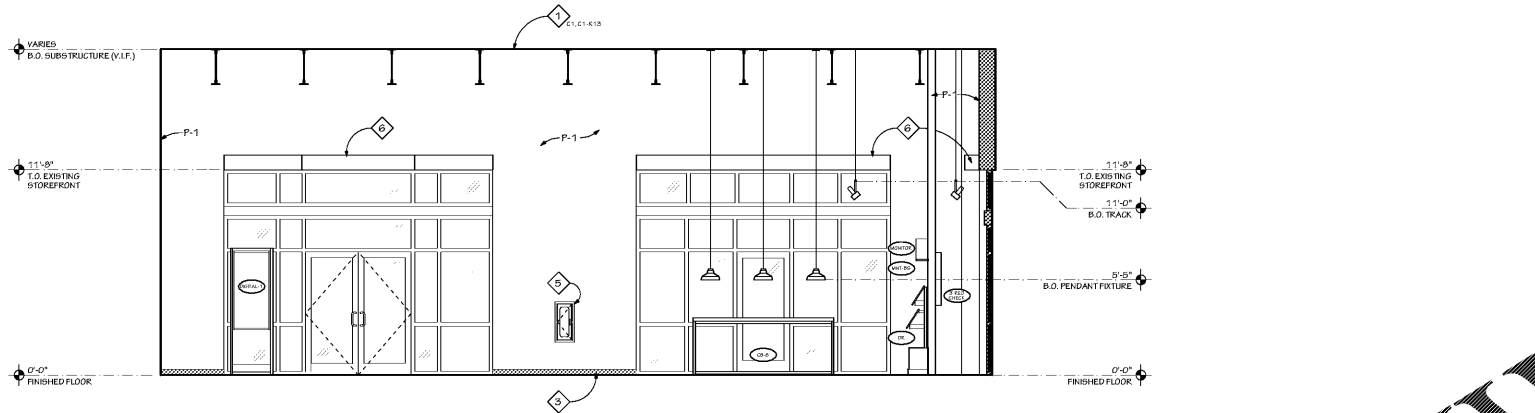
KEYNOTES
 THIS SHEET ONLY

- NO CEILING IN THIS AREA - OPEN TO STRUCTURE ABOVE. CONTRACTOR SHALL PAINT EXPOSED STRUCTURE PER ITEM C1-1 AND SHALL PROVIDE SPRAY APPLIED ACOUSTICAL FINISH (ITEM C1-1.3). CONTRACTOR SHALL PAINT EXPOSED METAL DECK WITH RUST INHIBITOR PRIOR TO APPLICATION OF ACOUSTICAL SPRAY. CONTRACTOR SHALL PREPARE AND READY EXISTING SURFACE AS REQUIRED PER MANUFACTURER'S REQUIREMENTS - SEE FINISH SCHEDULE AND SPECIFICATIONS FOR ADDITIONAL INFORMATION.
- SEALED GYPSUM BOARD CEILING FOR IMPROVED AIR QUALITY - SEE RCP FOR ADDITIONAL INFORMATION.
- WALL BASE IN RETAIL SALES AREA TO BE INSTALLED AFTER PERIMETER FIXTURES HAVE BEEN INSTALLED.
- TILE BASE.
- BEHIND RECESSED FIRE EXTINGUISHER CABINET WITH FIRE EXTINGUISHER. COORDINATE FINAL LOCATION WITH LOCAL FIRE MARSHAL - SEE DETAIL 5/10.02 FOR ADDITIONAL INFORMATION.
- ROLL-DOWN PERFORATED ALUMINUM SECURITY GATE WITH RECESSED RAILS MOUNTED ON STEEL BRACKETS AND ATTACHED TO VERTICAL STEEL TUBES ENGINEERED AND FURNISHED BY SECURITY GATE MANUFACTURER - SEE ROLLING DRILL SECTION ON SHEET 31.02 FOR ADDITIONAL INFORMATION.
- ADA COMPLIANT LAVATORY WITH ADA DRAIN PROTECTION. LAVATORY SHALL BE INSTALLED WITH FRONT 8" MAX A.F.F. - SEE PLUMBING DRAWINGS FOR ADDITIONAL INFORMATION.
- ADA COMPLIANT TOILET. CENTERLINE OF FIXTURE SHALL BE 16" MIN TO 18" MAX FROM SIDE WALL OR PARTITION. SEAT HEIGHT SHALL BE 17" MIN TO 19" MAX A.F.F. - SEE PLUMBING DRAWINGS FOR ADDITIONAL INFORMATION.
- ADA COMPLIANT SEAT COVER DISPENSER (EQB4-1). OPERABLE PARTS SHALL BE MOUNTED 15" MIN TO 48" MAX A.F.F.
- ADA COMPLIANT TOILET PAPER DISPENSER (EQB30). OPERABLE PARTS SHALL BE MOUNTED 15" MIN TO 48" MAX A.F.F.
- ADA COMPLIANT HORIZONTAL GRAB BAR. SIDE WALL GRAB BAR SHALL BE 42" MIN, LOCATED 12" MAX FROM REAR WALL (EQB21). REAR WALL GRAB BAR SHALL BE 36" MIN AND SHALL EXTEND 12" MIN ON ONE SIDE AND 24" MIN ON OPPOSITE SIDE OF THE WATER CLOSET (EQB20). GRAB BARS SHALL BE MOUNTED 33" MIN TO 36" MAX A.F.F. TO TOP OF GRIPPING SURFACE.
- ADA COMPLIANT VERTICAL GRAB BAR (EQB22). VERTICAL GRAB BAR SHALL BE 18" MIN, LOCATED 39" FROM REAR WALL AND SHALL BE MOUNTED 5" MIN TO 6" MAX ABOVE HORIZONTAL GRAB BAR.
- ADA COMPLIANT 24"x36" MIRROR (EQB40). BOTTOM EDGE OF MIRROR SHALL BE MOUNTED 40" MAX A.F.F.
- ADA COMPLIANT SOAP DISPENSER (EQB50). OPERABLE PARTS SHALL BE MOUNTED 40" MAX A.F.F.
- RECESSED SANITARY NAPKIN DISPOSAL (EQB33). OPERABLE PARTS SHALL BE MOUNTED 15" MIN TO 48" MAX A.F.F.
- EXCELLEATOR XL-88-1 11-H HAND DRYER WITH ADA COMPLIANT RECESS KIT (EQB10, EQB11). STAINLESS STEEL FINISH. B.O. FIXTURE AT 44" A.F.F.
- FRP-1 TO 52" A.F.F.
- 6" DEEP UPPER CABINET WITH (2) ADJUSTABLE SHELVES (L-1 FINISH). B.O. CABINET @ 44" A.F.F. SEE DETAIL 12/36.01 FOR ADDITIONAL INFORMATION.

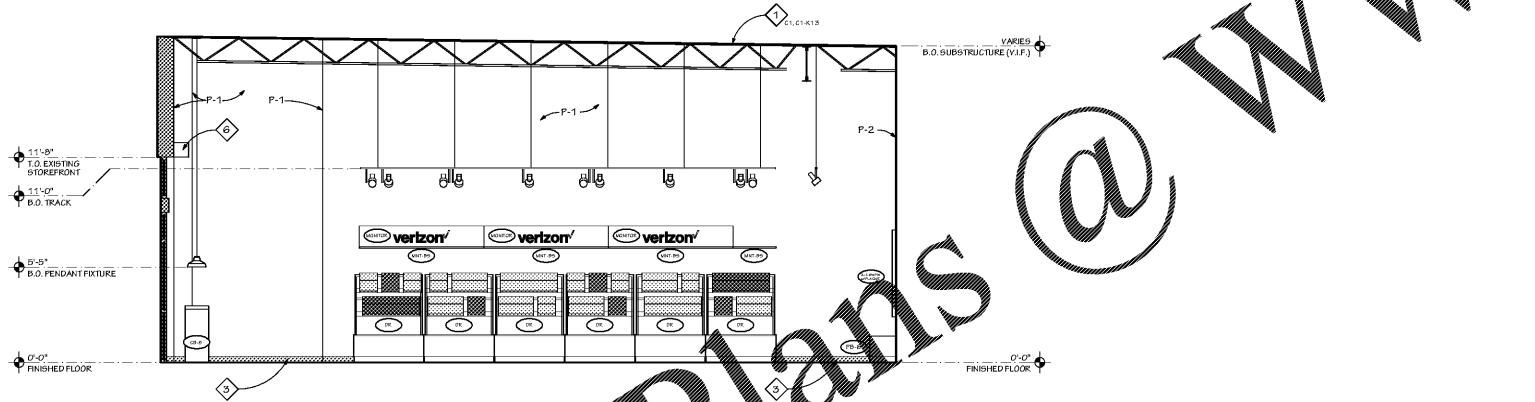
1 INTERIOR ELEVATION
 SCALE: 1/4" = 1'-0"



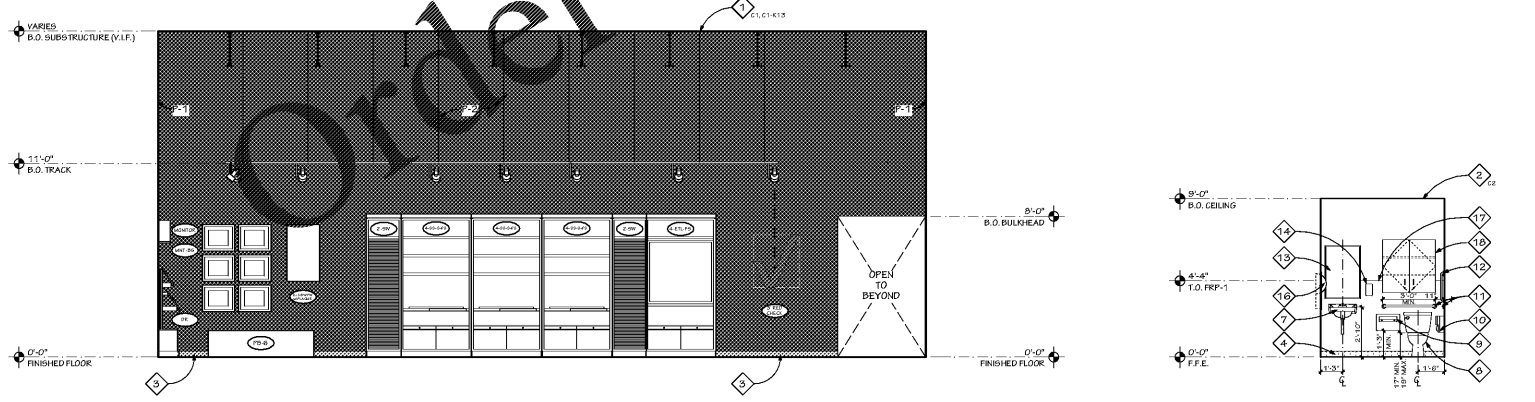
2 INTERIOR ELEVATION
 SCALE: 1/4" = 1'-0"



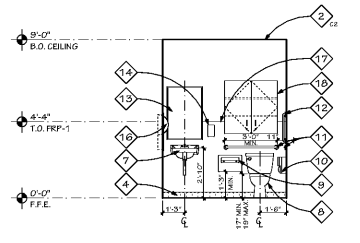
3 INTERIOR ELEVATION
 SCALE: 1/4" = 1'-0"



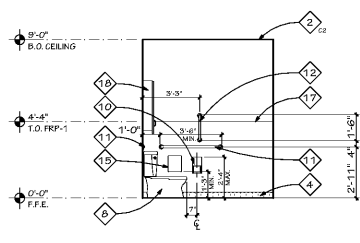
4 INTERIOR ELEVATION
 SCALE: 1/4" = 1'-0"



5 TOILET ROOM ELEVATION
 SCALE: 1/4" = 1'-0"



6 TOILET ROOM ELEVATION
 SCALE: 1/4" = 1'-0"



Order Plans @ www.LDOnline.com