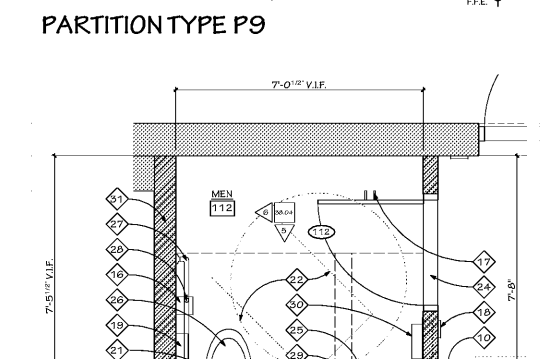
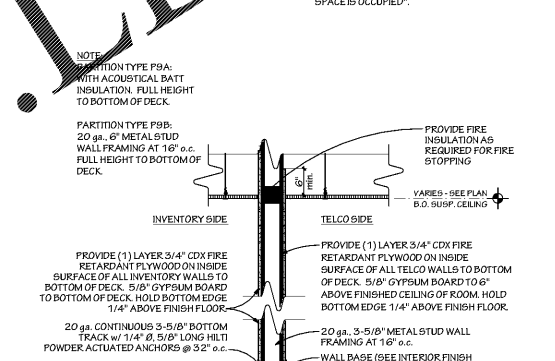


- GENERAL NOTES**  
THIS SHEET ONLY
- CONTRACTOR SHALL PROVIDE BLOCKING AT THE FOLLOWING LOCATIONS: TELCO RACK, INVENTORY ROOM WALLS, GRAB BARS, HANDRAILS, WALL HUNG FURNITURE, WALL HUNG CABINETS AND SHELVES, HANGING GLASS WINDOW DISPLAYS AT STOREFRONTS, AND AT ALL OTHER LOCATIONS WHERE HANGING POSTERS, EQUIPMENT IS BEING WALL OR CEILING/SOFFIT HUNG - SEE DETAIL 2/10.02 FOR ADDITIONAL INFORMATION.
  - PROVIDE CONTINUOUS 3/4" x 2" FIRE RATED FLYWOOD BLOCKING WITH BOTTOM AT 7" A.F.F. BEHIND SHELF AND MONITOR MOUNTED TO WALL - SEE TYPICAL WALL BLOCKING DETAILS ON SHEET 36.01 FOR ADDITIONAL INFORMATION.
  - CONTINUE GYPSUM BOARD, BATT INSULATION AND METAL STUD FRAMING TO BOTTOM OF DECK IN OPEN CEILING AREAS.
  - FOR ALL WALL TYPES THAT CONTINUE TO EXISTING STRUCTURE ABOVE - SEE TYPICAL PARTITION CONNECTIONS ON SHEET 35.03.
  - CONCRETE IN CONCRETE TOPS SHALL BE PUTTY OR WHITE BY DOWS MOORETT & COMPANY, INC. - SEE MILLWORK ELEVATIONS.
  - REFER TO SHEET 10.02 FOR ADA FIXTURE MOUNTING HEIGHTS.

- CONSTRUCTION NOTES**  
THIS SHEET ONLY
- ALL PROJECT GENERAL NOTES APPLY.
  - DISCREPANCIES: NOTIFY VERIZON PROJECT MANAGER AND CONSTRUCTION MANAGER OF ALL EXISTING CONSTRUCTION NOT SPECIFICALLY NOTED ON THE DRAWINGS. PROCEED ON THOSE ITEMS ONLY AS DIRECTED.
  - SEE SHEET 36.01 FOR DOOR SCHEDULE.
  - ALL DIMENSIONS ARE FINISH DIMENSIONS, UNLESS NOTED OTHERWISE.
  - ALL NEW WALLS SHALL EXTEND 6" ABOVE SUSPENDED CEILING, UNLESS NOTED OTHERWISE.
  - ALL INTERIOR PARTITIONS ARE P1 UNLESS NOTED OTHERWISE.
  - 1-HOUR RATED WALL CONSTRUCTION (WHERE APPLICABLE) SHALL BE PER 2004 IBC. METAL STUDS AT 16" o.c. WITH (1) LAYER 5/8" TYPE 'X' GYPSUM BOARD BOTH SIDES. FULL HEIGHT TO UNDERSIDE OF STRUCTURE ABOVE AND FULL INSULATION U.L. DESIGN NO. U419.
  - ALL NEW DOORS SHALL BE 5" OFF WALL (AT HINGE SIDE) UNLESS NOTED OTHERWISE. SEE STUD WALL HEAD DETAIL (LAMB SIM.) ON SHEET 31.01 FOR ADDITIONAL INFORMATION.
  - PROVIDE (2) ROWS MINIMUM 8" HIGH BLOCKING ON STUDS AT ALL WALLS WITH CABINETS IN BACK OF HOUSING. PROVIDE MINIMUM 8" HIGH, HORIZONTAL STRAPPING BEHIND WALL MOUNTED FIXTURES IN FRONT OF HOUSING. COORDINATE EXACT POSITIONING WITH MILL WORK AND FIXTURE ITEMS FOR FINAL LOCATION. SEE SHEET 36.01 FOR DETAILS.
  - ANY DRYWALL FINISH WHICH IS EXISTING TO REMAIN SHALL BE PATCHED, PRIMED AND PAINTED TO "LIKE NEW" CONDITION AND TO ACCEPT NEW FINISHES. CONTRACTOR SHALL DETERMINE BEST METHOD OF PATCHING OR IF DRYWALL WILL NEED TO BE REMOVED OR REPLACED TO ACHIEVE DESIRED FINISH. EXAMINE PATCH DRYWALL WHERE ITEMS ARE REMOVED TO BE AS, BUT NOT LIMITED TO, ELECTRICAL BOX, FIRM, MIRROR, DOOR JAMBS, WALL HUNG FIXTURES.
  - ALL DRYWALL SHALL BE 5/8" TYPE 'X' GYPSUM BOARD.
  - CONTRACTOR SHALL CLEAR PATCH AND PATCH NEW FLOOR FINISHES. CONTRACTOR SHALL PROVIDE NEW FLOOR FINISHES TO BE CLASSIFIED AS "TYPE 1" WITH A MAX. F<sub>1</sub> = 35 AND F<sub>2</sub> = 25 PER ASTM E 1191 STANDARD TEST METHOD.
  - CONTRACTOR SHALL PROVIDE OPTIONAL PRICING TO LEVEL OR SMOOTH FLOORS WITH MAJOR CONCRETE CRACKS AND TO ACCEPT NEW FINISHES. PRIMER & SEALER LEVELING TOPPING FOR DEPRESSIONS GREATER THAN 1/8". CONTRACTOR SHALL PROVIDE PROTECTIVE MEMBRANE UNDERLAYMENT OVER DEPRESSIONS AND UNDER VINYL FLOORING.
  - CONTRACTOR SHALL PROVIDE, ON OR ADJACENT TO THE REQUIRY GRILLE THAT IS PART OF THE REQUIRED MEANS OF EGRESS, A READILY VISIBLE, DURABLE SIGN (LETTERS NOT LESS THAN 1 INCH (25 MM) HIGH) ON A CONTRASTING BACKGROUND THAT READS AS FOLLOWS: "THIS DOOR TO REMAIN OPEN WHEN THE SPACE IS OCCUPIED".

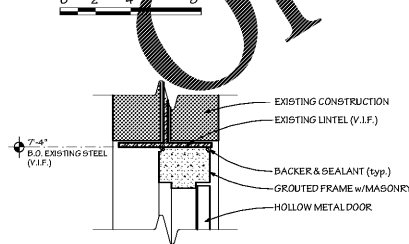


- LEGEND**  
THIS SHEET ONLY
- EXISTING WALL/DOOR/CASEWORK, ETC TO REMAIN
  - LOCATION OF NEW WALL TO BE CONSTRUCTED
  - WALL SYSTEM TO BOTTOM OF DECK

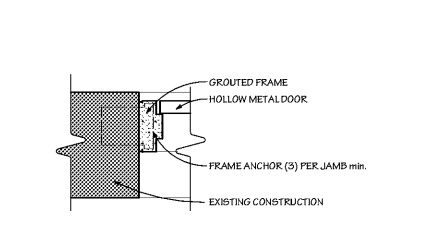
- KEYNOTES**  
THIS SHEET ONLY
- RETAIL FIXTURES AND RELATED COMPONENTS - SEE FURNITURE, FIXTURES, & EQUIPMENT PLAN FOR ALL FIXTURE RELATED ITEMS.
  - FLOOR FINISH LINE - SEE FINISH PLAN FOR ADDITIONAL INFORMATION.
  - NEW ALUMINUM AND GLASS STOREFRONT SYSTEM BELOW EXISTING TRANSOM TO MATCH EXISTING STOREFRONT SYSTEM. VERIFY SIZE AND LOCATION.
  - LINE OF BULKHEAD ABOVE SHEET 36.02 FOR ADDITIONAL INFORMATION.
  - DOMED DOOR STOP (3x12x12)
  - SEMI-RECESSED FIRE RING HANGER CABINET WITH FIRE EXTINGUISHER. COORDINATE FINAL LOCATION WITH LOCAL FIRE MARSHAL. SEE DETAIL 2/10.02 FOR ADDITIONAL INFORMATION.
  - WORK - SEE FURNITURE, FIXTURES, & EQUIPMENT PLAN AND CASEWORK DETAILS FOR ADDITIONAL INFORMATION.
  - FLOOR MOUNTED MOP SINK.
  - ADA COMPLIANT BREAK AREA SINK - SEE CASEWORK ELEVATIONS AND PLUMBING DRAWINGS FOR ADDITIONAL INFORMATION.
  - ADA WATER COOLER, PIPING BY PLUMBING CONTRACTOR - SEE PLUMBING DRAWINGS FOR ADDITIONAL INFORMATION.
  - APPLY GYPSUM BOARD ON TOP OF 3/4" CDX FIRE RETARDANT PLYWOOD TO BOTTOM OF DECK AROUND PERIMETER OF ROOM.
  - EXISTING ELECTRICAL EQUIPMENT - SEE ELECTRICAL DRAWINGS FOR ADDITIONAL INFORMATION.
  - EXISTING ALUMINUM AND GLASS STOREFRONT SYSTEM TO REMAIN.
  - EXISTING DOOR TO BE SECURED IN CLOSED POSITION AND DOOR HARDWARE TO BE REMOVED.
  - NEW ALUMINUM AND GLASS STOREFRONT DOORS TO MATCH EXISTING STOREFRONT SYSTEM - SEE DOOR SCHEDULE FOR ADDITIONAL INFORMATION.
  - ADA COMPLIANT TOILET PAPER DISPENSER (EQ8.30). OPERABLE PARTS SHALL BE MOUNTED 15" MIN TO 48" MAX A.F.F.
  - 6" WALL HOOKS MOUNTED ON BACK OF DOOR AT 48" A.F.F.
  - ADA TOILET ROOM SIGNAGE. SEE SHEET 10.02 FOR ADDITIONAL INFORMATION.
  - SANITARY NAPKIN DISPOSAL (EQ8.33). TOP OF FIXTURE @ 50" A.F.F.
  - ADA COMPLIANT SOAP DISPENSER (EQ8.50).
  - 6" DEEP UPPER CABINET WITH (2) ADJUSTABLE SHELVES (1-1" FINISH). B.O. CABINET @ 44" A.F.F. CENTERED ABOVE 36" GRAB BAR. SEE DETAIL 12/36.01 FOR ADDITIONAL INFORMATION.
  - LINE DENOTES EDGE OF REQUIRED ADA CLEAR FLOOR AREA IN FRONT OF FIXTURE, ETC.
  - ADA COMPLIANT SEAT COVER DISPENSER (EQ8.41).
  - ADA COMPLIANT THRESHOLD.
  - ADA COMPLIANT LAVATORY WITH ADA DRAIN PROTECTION - SEE PLUMBING DRAWINGS FOR ADDITIONAL INFORMATION.
  - ADA COMPLIANT TOILET - SEE PLUMBING DRAWINGS FOR ADDITIONAL INFORMATION.
  - ADA COMPLIANT HORIZONTAL GRAB BAR (EQ8.20, EQ8.21).
  - ADA COMPLIANT VERTICAL GRAB BAR (EQ8.22).
  - ADA COMPLIANT 24" x 36" MIRROR (EQ8.40).
  - WELDED SEMI-RECESSED HAND DRYER WITH ADA COMPLIANT RECESS KIT (EQ8.11). STAINLESS STEEL FINISH. B.O. FIXTURE @ 44" A.F.F.
  - EXTEND METAL FRAMING TO BOTTOM OF DECK ABOVE EXISTING PARTITION.
  - ADA EXIT SIGN - SEE SHEET 10.02 FOR ADDITIONAL INFORMATION.
  - APPLY GYPSUM BOARD TO 6" ABOVE FINISHED CEILING OF ROOM ON TOP OF 3/4" CDX FIRE RETARDANT PLYWOOD TO BOTTOM OF DECK (AT NEW TELCO)
  - EXISTING DOOR TO BE MECHANICALLY SEALED AND DOOR HARDWARE TO BE REMOVED.
  - RELOCATED ELECTRICAL PANELS - SEE ELECTRICAL DRAWINGS FOR ADDITIONAL INFORMATION.



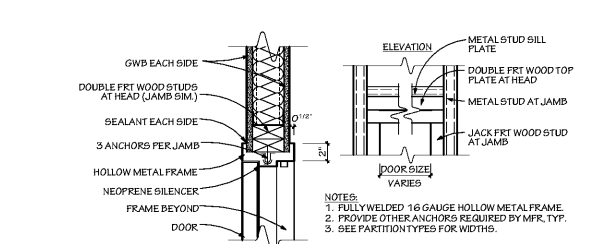
**1 FLOOR PLAN**  
SCALE: 1/4" = 1'-0"



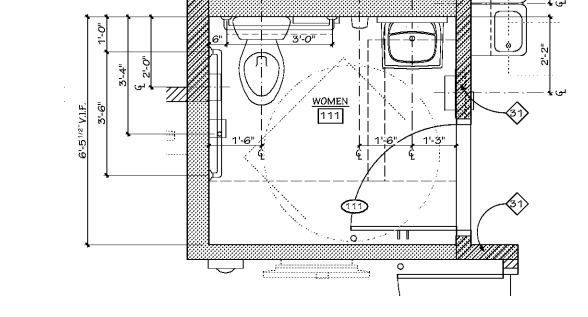
**2 HOLLOW METAL DOOR HEAD**  
SCALE: 1-1/2" = 1'-0"



**3 HOLLOW METAL DOOR JAMB**  
SCALE: 1-1/2" = 1'-0"



**4 STUD WALL HEAD DETAIL (JAMB SIM.)**  
SCALE: 1-1/2" = 1'-0"



**5 ENLARGED TOILET ROOMS PLAN**  
SCALE: 1/2" = 1'-0"

Order Plans

a

WWW.LDINING.COM

WWW.LDINING.COM

**MRA**

**Buildings Group**

**MRA ARCHITECTURAL SERVICES, INC.**  
*Architects, Planners, Urban Designers, Landscape Architects, Engineers and Surveyors*  
1414 Key Highway, Suite M301  
Baltimore, Maryland 21239  
410-490-7201

**TEI**

**TELEBENT ENGINEERING, INC.**  
2216 COMMERCE ROAD  
FOREST HILL, MD 21086  
PHONE: 410-692-2616  
FAX: 410-692-2853  
WWW.TE-ENG.COM

*Client*  
**Verizon**  
Jared Yerg  
3700 Arco Corporate Drive  
Charlotte, North Carolina 28273

**Verizon**  
Simpsonville  
NextGen

**340 Harrison Bridge Road**  
Simpsonville, SC 29680

NO.	REVISION	DATE
FILE 17759x101	DRAWN SKJ	ISSUED 06/19/2020
SHEET TITLE		
<b>Floor Plan</b>		
SHEET NUMBER		
<b>31.01</b>		
Permit Documents		