

**ABBREVIATIONS**

A	Average	DEPT	Department	HP	High Point	NA	Not Applicable	SGH	Subgrade
AB	Anchor Bolt	DET	Detail	HG	High Strength	NEQ	Natural	SECT	Section
AC	Air Conditioning	DF	Detail	HD	Heavy Duty	NEQ	Negative	SEL	Select
ABV	Above	DAG	Diagonal	HT	High Tension	NF	Noise Frequency	SEP	Separate
ACT	Acoustical Ceiling Tile	DM	Dimension	HTK	High Tension	NTC	Noise Contactor	SH	Shed
AD	Actual	DIV	Division	HVS	High Tensile Strength	NO	Number	SF	Square Feet
ADM	Adhesive	DLC	Drawn Local	HWC	Hot Water Control	NOM	Nominal	SF	Square Feet
ADJ	Adjustment	DNE	Drawn	HWS	Hot Water Supply	NP	Not Plotted	SG	Single
AGFR	Aggregate	DZ	Dampening	HV	High Voltage	NRC	Noise Reduction Coefficient	SH	Shed
AL	Aluminum	DR	Draw	HVY	Heavy	N5	Near Side	SK	Skid
ALLW	Allowance	DR	Draw	HYDR	Hydrant	NTS	Not To Scale	SK	Skid
ALUM	Aluminum	DS	Draw	IC	Insulation	OC	On Center	SO	Slab On Grade
APPX	Approximate / Appendix	DUP	Duplicate	LI	Insulation Joint	OD	Outside Diameter	SP	Stair Pipe
ARCH	Architect	E	East	LUM	Lighting	OF	Offset	SP	Stair Pipe
ASPH	Asphalt	EA	East	INC	Incorporate	OPND	Opening	SPR	Speaker
ASGN	Assignment	EF	Each Face	INCL	Included	OPND	Opening	SPR	Speaker
ASPY	Asbestos	EFB	Each Face	INDL	Industrial	OR	Or	SP	Speaker
AUTO	Automatic	EFB	Each Face	INDL	Industrial	OR	Or	SP	Speaker
AVG	Average	EL	Elevation	INDL	Industrial	OR	Or	SP	Speaker
B/(B.O.)	Bottom of	ELC	Elevation	INDL	Industrial	OR	Or	SP	Speaker
BD	Board	ELV	Elevation	INSUL	Insulation	PART	Part	STAD	Staggered
BDY	Body	ELV	Elevation	INSUL	Insulation	PC	Phase	STAYN	Staggered
BL	Building Line	EMD	Embedment	INTL	International	FC	Fenestration	STD	Standard
BLD	Building	ENR	Entrance	INTL	International	FC	Fenestration	STD	Standard
BLW	Below	EQIP	Equipment	J	Joint	PERF	Perforated	STN	Stitch
BM	Beam	EQIP	Equipment	JCT	Junction	PH	Phase	STR	Strength
BOT	Bottom	EQIP	Equipment	JCT	Junction	PL	Plate	STR	Strength
BR	Bedroom	EQIP	Equipment	JCT	Junction	PL	Plate	STR	Strength
BRC	Breakroom	EQIP	Equipment	JCT	Junction	PL	Plate	STR	Strength
BSMT	Basement	EQIP	Equipment	JCT	Junction	PL	Plate	STR	Strength
BTH	Bathroom	EQIP	Equipment	JCT	Junction	PL	Plate	STR	Strength
CC	Center to Center	FAB	Fabricate	L	Left	PL	Plate	STR	Strength
CAB	Cabinet	FAB	Fabricate	L	Left	PL	Plate	STR	Strength
CAP	Capacity	FAB	Fabricate	L	Left	PL	Plate	STR	Strength
CAT	Catwalk	FAB	Fabricate	L	Left	PL	Plate	STR	Strength
CB	Cable Breaker	FAB	Fabricate	L	Left	PL	Plate	STR	Strength
CF	Cable Feet	FAB	Fabricate	L	Left	PL	Plate	STR	Strength
CF	Cable Feet	FAB	Fabricate	L	Left	PL	Plate	STR	Strength
CF	Cable Feet	FAB	Fabricate	L	Left	PL	Plate	STR	Strength
CF	Cable Feet	FAB	Fabricate	L	Left	PL	Plate	STR	Strength

**DRAWING INDEX**

SHEET	DRAWING	ISSUED FOR BIDS	REVISION	ISSUED FOR PERMIT REVIEW	COMMENTS
10.01	COVER SHEET				
10.02	LIFE SAFETY PLAN & ADA INFORMATION				
<b>ARCHITECTURAL</b>					
21.01	DEMOLITION FLOOR PLAN				
21.02	DEMOLITION FURNITURE PLAN				
21.03	DEMOLITION REFLECTED CEILING PLAN				
31.01	FLOOR PLAN				
31.02	REFLECTED CEILING PLAN				
31.03	FINISH PLAN & TRANSLATION DETAILS				
31.04	FIXTURE SECTIONS, CASEWORK & DETAILS				
38.01	DOOR SCHEDULES & FINISHES				
38.02	FURNITURE, FIXTURE, & EQUIPMENT PLAN				
38.03	FURNITURE, FIXTURE, EQUIPMENT SCHEDULES & DETAIL				
38.04	INTERIOR ELEVATIONS				
39.01	SPECIFICATIONS				
39.02	SPECIFICATIONS				
39.03	SPECIFICATIONS				
39.04	SPECIFICATIONS				
39.05	SPECIFICATIONS				
39.06	SPECIFICATIONS				
39.07	SPECIFICATIONS				
<b>MECHANICAL</b>					
70.01	MECHANICAL LEGEND & SPECIFICATIONS				
71.01	DEMOLITION HVAC PLAN				
71.02	DEMOLITION LIGHTING PLAN				
71.03	HVAC PLAN				
72.01	HVAC DETAILS				
72.02	HVAC SCHEDULES				
72.03	O.A. CALCULATIONS				
<b>PLUMBING</b>					
80.01	PLUMBING LEGEND & SPECIFICATIONS				
81.01	DEMOLITION PLUMBING PLAN				
81.02	PLUMBING PLAN				
<b>ELECTRICAL</b>					
90.01	SPECIFICATIONS				
90.02	SPECIFICATIONS & ELECTRICAL SYMBOLS LIST				
91.01	DEMOLITION LIGHTING PLAN				
91.02	DEMOLITION POWER PLAN				
92.01	LIGHTING PLAN				
92.02	POWER PLAN				
92.03	LOW VOLTAGE PLAN				
92.04	FIRE ALARM PLAN				
92.05	DIMENSION PLAN				
93.01	ELECTRICAL DETAILS				
93.02	EMS DETAILS				
93.03	LIGHTING DETAILS				
93.04	SECURITY SCHEDULES & RISER				
93.05	SECURITY DETAILS				
93.06	SECURITY DETAILS				
93.07	SECURITY DETAILS				
94.01	SCHEDULES & POWER RISER				

**PROJECT DIRECTORY**

Architects  
MRA Architectural Services, Inc.  
Rich Root - Architect  
rroot@mragroup.com

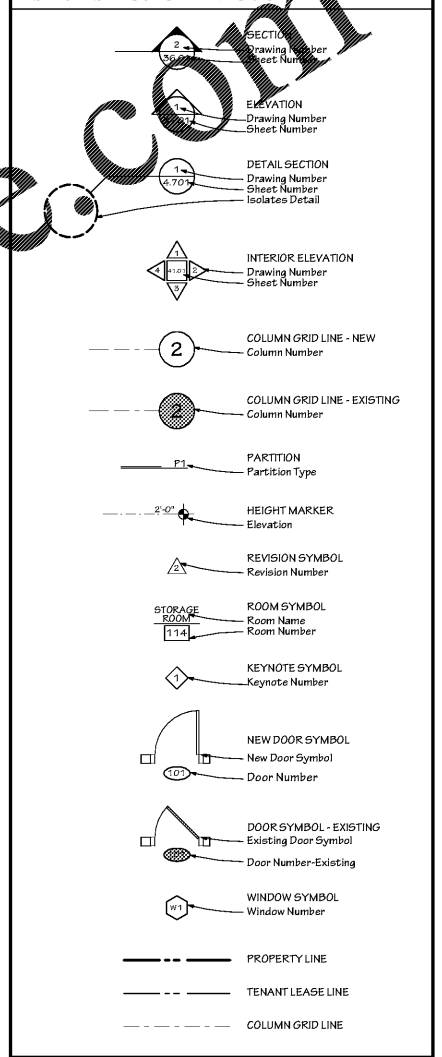
MEP Engineers  
Telegent Engineering Inc.  
Timothy Smith  
tsmith@tel-eng.com

Client  
Verizon  
Jared Verg - Project Manager  
jared.verg@verizonwireless.com  
3700 Arco Corporate Drive  
Charlotte, North Carolina 28273

**Buildings Group**

**MRA ARCHITECTURAL SERVICES, INC.**  
Architects, Planners, Urban Designers, Landscape Architects, Engineers and Surveyors  
1414 Key Highway, Suite M301  
Baltimore, Maryland 21230  
443-490-7201

**REFERENCE SYMBOLS**



**TELEAGENT ENGINEERING INC.**  
2216 COMMERCE ROAD  
FOREST HILL, MD 21050  
PHONE: 410-662-2616 FAX: 410-662-2653  
WWW.TEL-ENG.COM

Client  
Verizon  
Jared Verg  
3700 Arco Corporate Drive  
Charlotte, North Carolina 28273

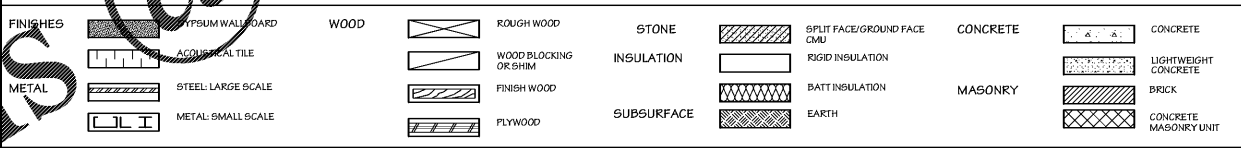
**APPLICABLE CODES**

- 2015 INTERNATIONAL BUILDING CODE (IBC) W/SC MODIFICATIONS
- 2015 INTERNATIONAL EXISTING BUILDING CODE (IEBC) W/SC MODIFICATIONS
- 2015 INTERNATIONAL MECHANICAL CODE (IMC) W/SC MODIFICATIONS
- 2015 INTERNATIONAL FUEL GAS CODE (IFGC) W/SC MODIFICATIONS
- 2015 INTERNATIONAL PLUMBING CODE (IPC) W/SC MODIFICATIONS
- 2014 NATIONAL ELECTRICAL CODE W/SC MODIFICATIONS
- 2009 INTERNATIONAL ENERGY CONSERVATION CODE (IECC) W/SC MODIFICATIONS
- 2015 STANDARD FIRE PREVENTION CODE (IFC) W/SC MODIFICATIONS
- 2017 VERSION OF A117.1, STANDARD FOR ACCESSIBLE AND USABLE BUILDINGS

**GENERAL NOTES**

- ALL WORK SHALL COMPLY WITH THE 2015 INTERNATIONAL EXISTING BUILDING CODE (IEBC) WITH SC MODIFICATIONS, ALL LOCAL AND STATE FIRE CODES WITH LOCAL AMENDMENTS, ALL MATERIALS, CONSTRUCTION TECHNIQUES, AND PRACTICES IN ALL ARCHITECTURAL, STRUCTURAL, MECHANICAL, PLUMBING, FIRE PROTECTION, AND ELECTRICAL WORK SHALL CONFORM TO THE APPLICABLE CODES AND REGULATIONS OF THE STATE AND ITS LOCAL JURISDICTION AND ALL INDUSTRY STANDARDS.
- THE CONTRACTOR SHALL COMPLY WITH APPLICABLE STATE, COUNTY, AND CITY REGULATIONS AND/OR LEGISLATION REGARDING THE CONTROL OF POLLUTION AS IT APPLIES TO THE WORK.
- CLARIFICATION: IF THE CONTRACT DRAWINGS ARE FOUND TO BE UNCLEAR, AMBIGUOUS, OR CONTRADICTORY, THE CONTRACTOR MUST REQUEST CLARIFICATION FROM THE ARCHITECT BEFORE PROCEEDING WITH THAT PART OF THE PROJECT WORK.
- THE CONTRACTOR SHALL BE SOLELY RESPONSIBLE FOR ALL SAFETY PRECAUTIONS AND STANDARDS TO INSURE THE SAFETY OF ALL PERSONS ON THE SITE.
- THE TERM "PROVIDE" SHALL MEAN FURNISH AND INSTALL.
- THE CONTRACTOR IS TO VERIFY ALL DIMENSIONS AND EXISTING CONDITIONS AND REPORT ANY DISCREPANCIES IMMEDIATELY TO THE ARCHITECT.
- ALL WOOD MATERIALS, INCLUDING BUT NOT LIMITED TO BLOCKING, PLYWOOD AND SHEATHING SHALL BE FIRE RETARDANT TREATED.
- SECURITY VENDOR IS TO COORDINATE EXISTING SECURITY & FIRE ALARM SYSTEM (WHERE APPLICABLE) REQUIREMENTS WITH THE FIRE MARSHAL AND CONTRACTOR PRIOR TO THE START OF CONSTRUCTION.
- WHERE APPLICABLE, MODIFICATIONS TO EXISTING SPRINKLER SYSTEM SHALL BE COMPLIANT WITH 2012 LIFE SAFETY CODE & WITH AUTHORITIES HAVING JURISDICTION & SHALL BE DESIGN/BUILD BY OTHERS.
- CONTRACTOR SHALL BE RESPONSIBLE FOR COST & CONSTRUCTION OF ALL JURISDICTION REQUIRED BUILDING INSPECTIONS AS WELL AS SPECIAL INSPECTIONS OF THE FOLLOWING: SOIL, CONCRETE, REINFORCING STEEL, STRUCTURAL STEEL, COLD FORMED FRAMING, & EIFS AS APPLICABLE TO THE SCOPE OF WORK.
- WHERE APPLICABLE, CONTRACTOR TO CARRY COST TO INTERFACE VERIZON FIRE ALARM EQUIPMENT AND DEVICES WITH LANDLORD FIRE ALARM SYSTEM.

**MATERIAL SYMBOLS**



**PROJECT DATA**

PROJECT NAME:	VERIZON NEXTGEN - SIMPSONVILLE, SC
EXISTING OCCUPANCY GROUP (NAME OF EXISTING TENANT):	ASSEMBLY (A-2) (MIMIS STEAKHOUSE OF JAPAN)
PROPOSED OCCUPANCY GROUP:	MERCANTILE (M)
TOTAL PROPOSED OCCUPANT LOAD:	52 TOTAL OCCUPANTS
EXISTING CONSTRUCTION TYPE:	II-B
PROPOSED CONSTRUCTION TYPE:	
<b>FIRE PROTECTION SYSTEMS:</b>	
FIRE ALARM SYSTEM:	YES
FULLY SPRINKLERED AND MONITORED:	
TOTAL EXISTING TENANT AREA:	3,335 SF (GROSS)
TOTAL PROPOSED TENANT AREA:	3,335 SF (GROSS)
EXISTING HEIGHT:	EXISTING BUILDING (1) STORY
PROPOSED HEIGHT:	EXISTING BUILDING (1) STORY

**SCOPE OF WORK**

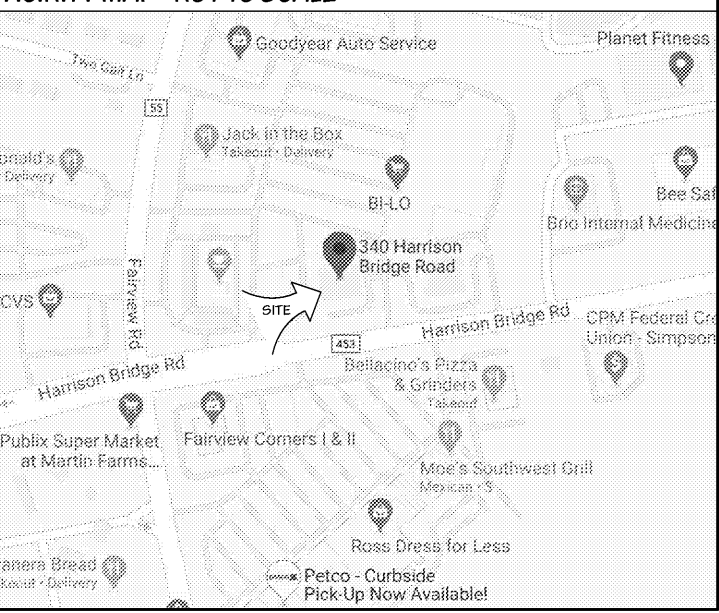
THE SCOPE OF WORK COVERED IN THIS SET OF CONSTRUCTION DOCUMENTS IS FOR THE INTERIOR REMODEL AND EXTERIOR MODIFICATION OF THE EXISTING TENANT SPACE IN EXISTING BUILDING WHICH WAS BUILT UNDER SEPARATE BUILDING PERMITS. A BRIEF DESCRIPTION OF THE WORK IS AS FOLLOWS:

- INTERIOR DEMOLITION WORK SHALL INCLUDE REMOVAL OF EXISTING INTERIOR PARTITIONS, SOFFITS, CEILING, FIXTURES, FINISHES, DUCTWORK, IN ADDITION, FLOOR TRENCHING WHICH WILL BE REQUIRED FOR NEW ELECTRICAL FLOOR BOXES AND PLUMBING. SEE DEMOLITION PLANS FOR ADDITIONAL INFORMATION.
- NEW WORK SHALL INCLUDE CONSTRUCTION OF INTERIOR NON-BEARING PARTITIONS, NEW CEILING, DOORS, FINISHES AND ADA RESTROOMS. MEP CONSTRUCTION INCLUDES NEW HVAC DISTRIBUTION OF NEW ROOF TOP UNITS, AND NEW LIGHTING, ETC. NEW INTERIOR FLOOR AND WALL FINISHES TO BE INSTALLED. SEE PLANS FOR ADDITIONAL INFORMATION.
- ELECTRICAL WORK TO INCLUDE ALL DISTRIBUTION RECEPTACLES AND NEW LIGHTS. SEE ELECTRICAL PLANS FOR ADDITIONAL INFORMATION.
- EXTERIOR CONSTRUCTION INCLUDES REMOVAL OF STOREFRONT SYSTEM AND REPLACE WITH NEW STOREFRONT SYSTEM.

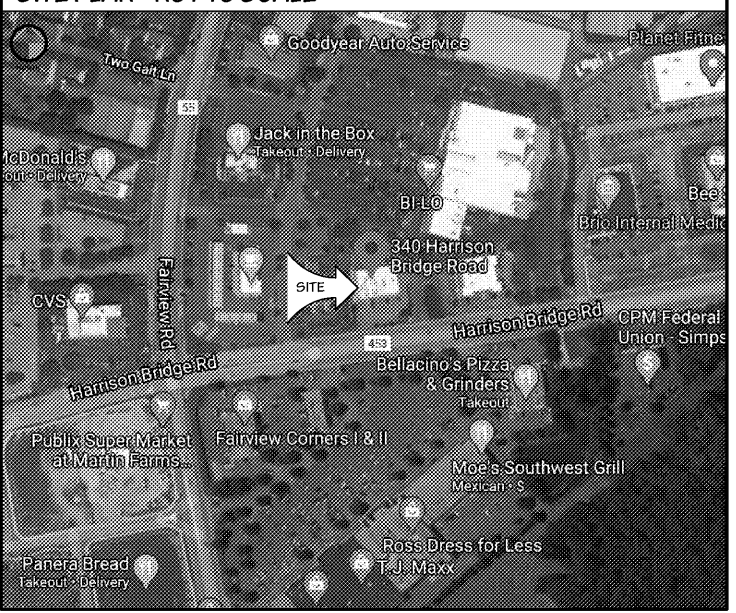
ALL WORK INCLUDING BUT NOT LIMITED TO, GENERAL CONSTRUCTION, HVAC, PLUMBING AND ELECTRICAL, SHALL BE PERFORMED IN ACCORDANCE WITH ALL APPLICABLE CODES LISTED ON THIS SHEET AND LOCAL AMENDMENTS. ALL WORK SHALL BE DONE IN A FIRST CLASS MANNER USING STANDARD CONSTRUCTION PRACTICES AND ACCORDING TO THE RULES AND REGULATIONS OF THE GOVERNING BUILDING DEPARTMENT.

PROJECT DOES NOT INVOLVE MODIFICATIONS TO EXISTING SITE PLAN.

**VICINITY MAP - NOT TO SCALE**



**SITE PLAN - NOT TO SCALE**



6 CONTENTS COPY RIGHT 2020  
MRA ARCHITECTURAL SERVICES, INC.

NO.	REVISION	DATE
FILE	DRAWN	ISSUED
17759x101	SKJ	06/19/2020

SHEET TITLE

**Cover Sheet**

SHEET NUMBER

**10.01**

Permit Documents