

DATE
APRIL 28, 2020

DRAWN BY
MRC/JML

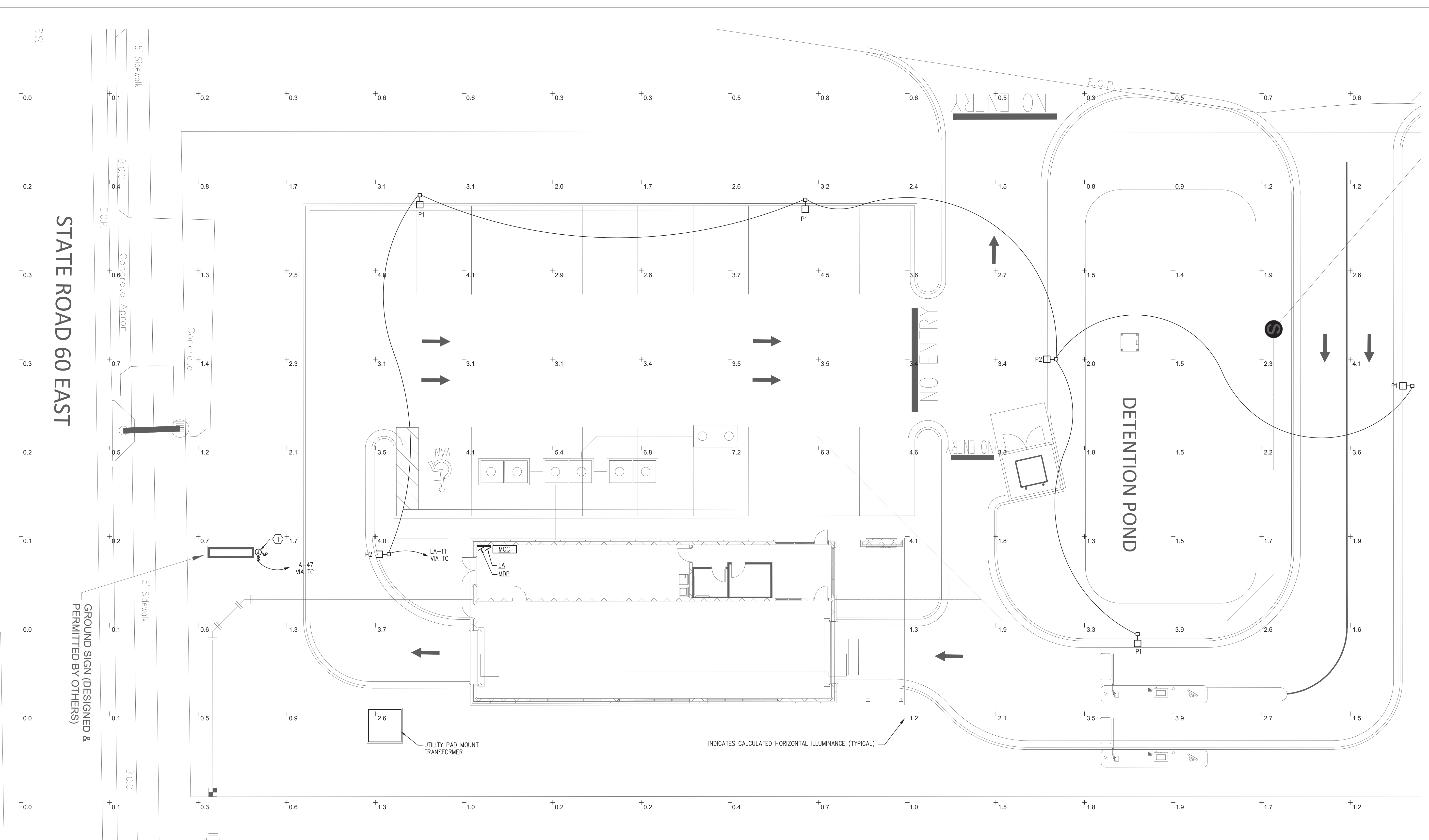
REVISED

JOB NO.
19-249-1

James M. Lamb
Professional Engineer, License No. 52688
This item has been digitally signed and sealed by James M. Lamb on the date indicated here. Printed copies of this document are not considered signed and sealed and the signature must be verified on any electronic copies.

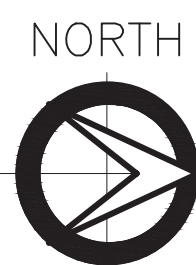
SHEET NUMBER
E1.0

ARD PROJECT #0052
APPLIED RESEARCH AND DESIGN, INC.
2623 S. BLAIRSTONE ROAD
TALLAHASSEE, FL 32301
FL CA#8948
JAMES M. LAMB, PE#52688
Tel: (850) 668-6324 -- E-mail: jlamb@ard-eng.com



WORK NOTES:

- 1 DISCONNECTING MEANS MOUNTED AT ROAD SIGNAGE. COORDINATE EXACT LOCATION AND REQUIREMENTS WITH SIGN INSTALLER PRIOR TO ROUGH-IN AND CONNECT SIGN FOR OPERATION.



SITE PLAN - ELECTRICAL

SCALE: 3/32" = 1' - 0"

GENERAL NOTES:

- 1. PROVIDE SEPARATE NEUTRAL FOR EACH 120V BRANCH CIRCUIT.
- 2. SEE E1.4 FOR ADDITIONAL ELECTRICAL WORK.
- 3. CALCULATED HORIZONTAL ILLUMINANCE IS BASED ON PHOTOMETRIC DATA PROVIDED BY THE FIXTURE MANUFACTURER, ASSUMING A LIGHTING LOSS FACTOR OF 1.0, USING VISUAL 2.0 SOFTWARE APPLICATION. LIGHTING LEVELS ARE BASED ON FIXTURES SPECIFIED ON THESE PLANS, ONLY, AND DO NOT ACCOUNT FOR SOURCES OFF THE PROPERTY, OR FOR BUILT-IN EQUIPMENT LIGHTING.

COPYRIGHT © CONN + ARCHITECTS, INC. ALL RIGHTS RESERVED. PRINTED IN THE UNITED STATES OF AMERICA. NO PART OF THESE DOCUMENTS MAY BE REPRODUCED, STORED IN A RETRIEVAL SYSTEM, OR TRANSMITTED, IN ANY FORM OR BY ANY MEANS, WITHOUT THE WRITTEN PERMISSION OF CONN + ARCHITECTS, INC.