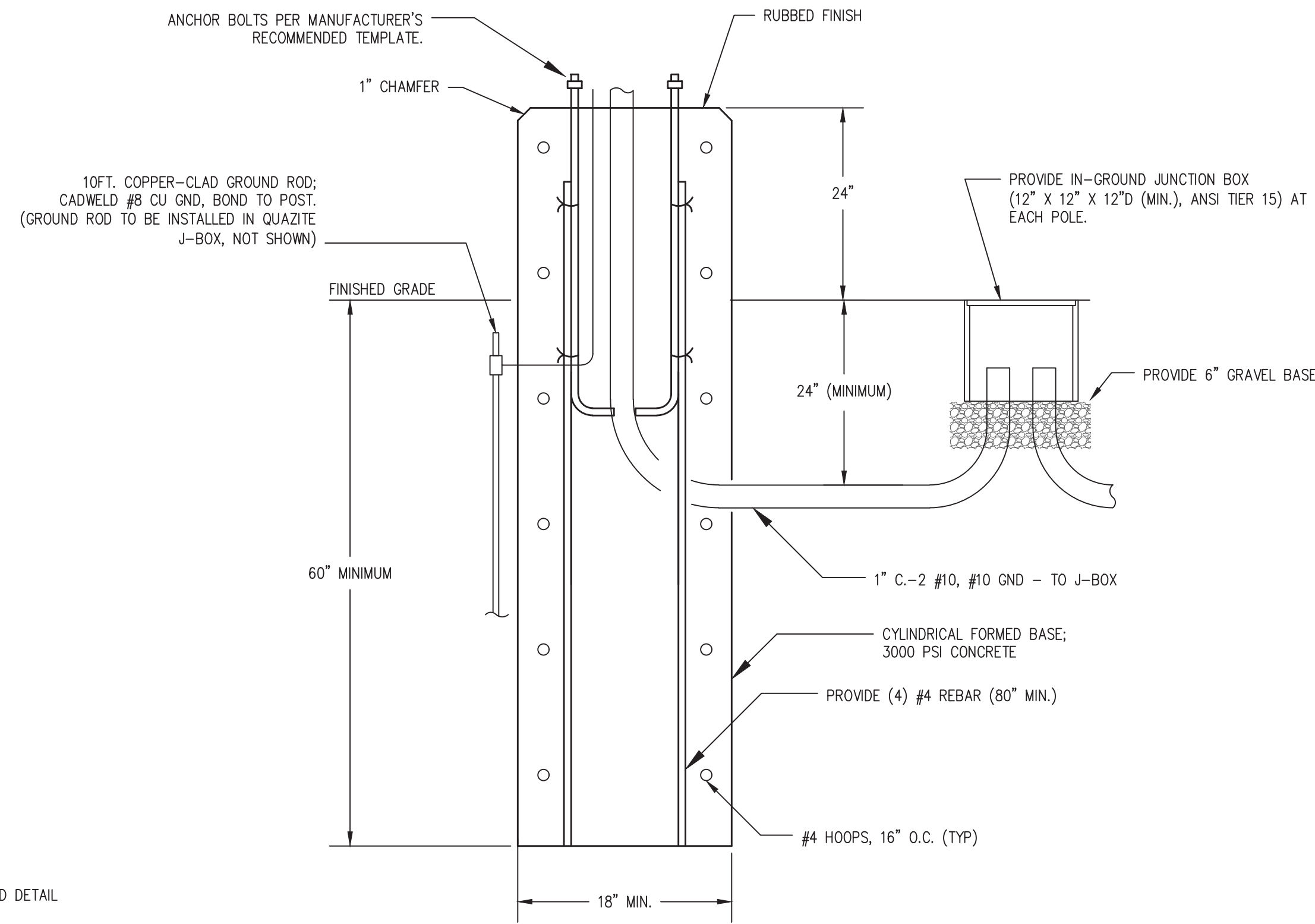
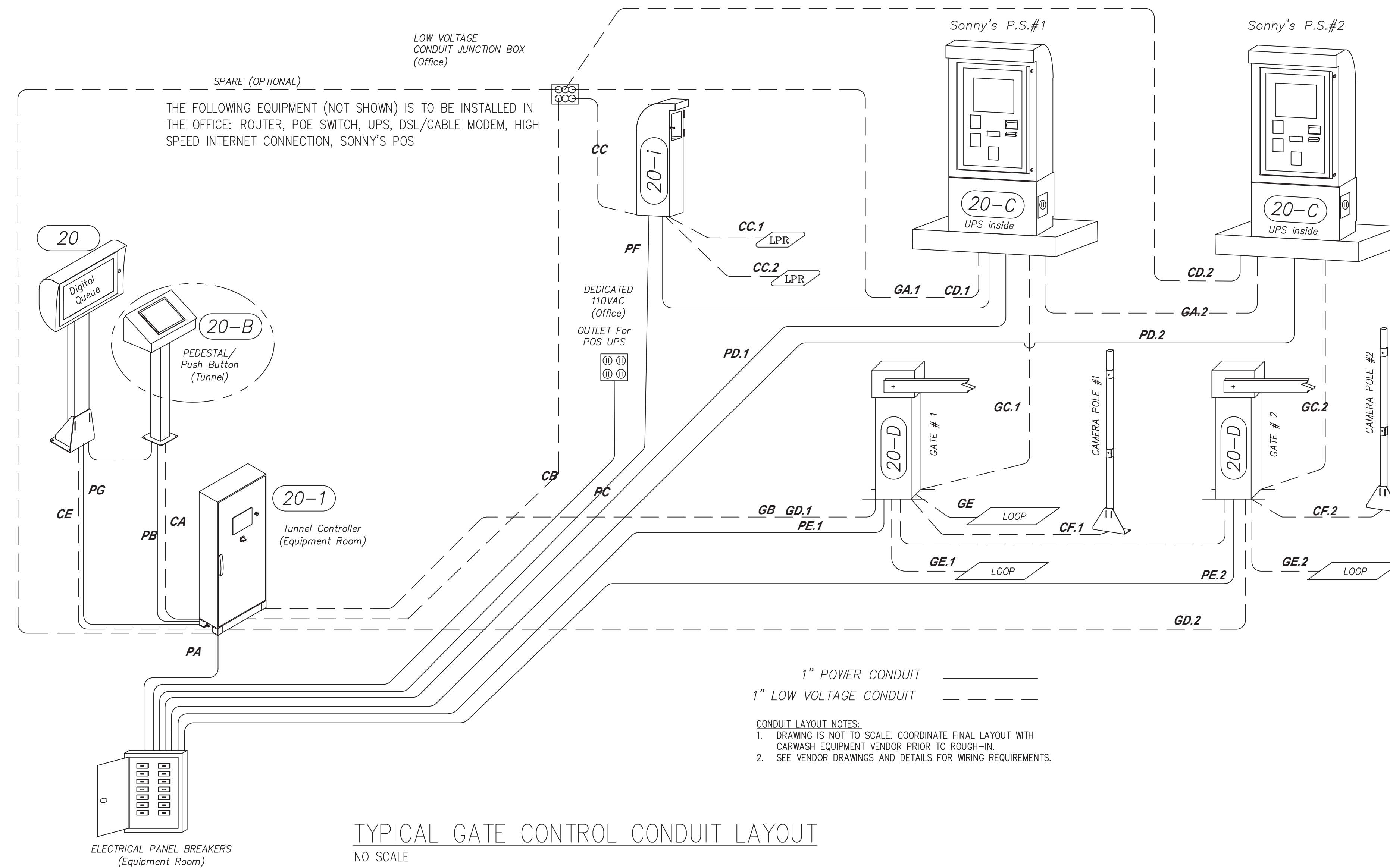


TYPICAL LIGHTING POLE DETAIL
NO SCALE



TYPICAL LIGHTING POLE BASE DETAIL
NO SCALE



TYPICAL GATE CONTROL CONDUIT LAYOUT
NO SCALE

GENERIC CARWASH W/ CAMERA "POWER LAYOUT"

IDENTIFIER	WIRE TYPE	PROVIDED BY	TERMINATION LOCATIONS	TERMINATED BY
PA	12/3 BLK/WHT/GRN	GC	FROM ELECTRICAL PANEL BREAKER TO TUNNEL CONTROLLER (110 VAC)	GC
PB	14/3 BLUE/WHT/GRN	GC	FROM TUNNEL CONTROLLER TO PEDESTAL (24 VDC)	GC
PC	18/4	GC	FROM TUNNEL CONTROLLER TO START/STOP BUTTON PEDESTAL	GC
PD.1	12/3 BLK/WHT/GRN	GC	FROM ELECTRICAL PANEL BREAKER TO OFFICE OUTLET (POS)	GC
PD.2	12/3 BLK/WHT/GRN	GC	FROM ELECTRICAL PANEL BREAKER TO Sonny's P.S.#1 (UPS Inside)	GC
PE.1	12/3 BLK/WHT/GRN	GC	FROM ELECTRICAL PANEL BREAKER TO Sonny's P.S.#2 (UPS Inside)	GC
PE.2	12/3 BLK/WHT/GRN	GC	FROM ELECTRICAL PANEL BREAKER TO GATE#1 (110 VAC)	GC
PF	12/3 BLK/WHT/GRN	GC	FROM ELECTRICAL PANEL BREAKER TO GATE#2 (110 VAC)	GC
PG	12/3 BLK/WHT/GRN	GC	FROM ELECTRICAL PANEL BREAKER TO LPR BOX (110 VAC)	GC
PG	12/3 BLK/WHT/GRN	GC	FROM ELECTRICAL PANEL BREAKER TO DIGITAL QUEUE (110 VAC)	GC

NOTE: ALL WIRING FOR CarWash Controls EQUIPMENT TO BE RUN BY AN ELECTRICAL CONTRACTOR AND MUST BE HOME-RUNNED FROM POINT TO POINT. SPLICING OF WIRES IS NOT ALLOWED.

GENERIC CARWASH W/ CAMERA "NETWORK, COMM & CONTROL LAYOUT"

IDENTIFIER	WIRE TYPE	PROVIDED BY	TERMINATION LOCATIONS	TERMINATED BY
CA	CATS SHIELDED	GC	FROM TUNNEL CONTROLLER TO PUSH BUTTON (PEDESTAL)	GC
CB	CATS SHIELDED	GC	FROM ROUTER TO TUNNEL CONTROLLER	GC
CC	CATS SHIELDED	GC	FROM ROUTER TO LPR BOX	GC
CC.1	M-GAGE	SONNYS	FROM LPR BOX TO LPR VEHICLE DETECTOR #1	GC
CC.2	M-GAGE	SONNYS	FROM LPR BOX TO LPR VEHICLE DETECTOR #2	GC
CD.1	CATS	GC	FROM ROUTER TO Sonny's P.S.#1	GC
CD.2	CATS	GC	FROM ROUTER TO Sonny's P.S.#2	GC
CE	CATS SHIELDED	GC	FROM TUNNEL CONTROLLER TO DIGITAL QUEUE	GC
CF.1	CATS	GC	FROM CAMERA POLE#1 TO POE SWITCH	GC
CF.2	CATS	GC	FROM CAMERA POLE#2 TO POE SWITCH	GC

NOTE: ALL WIRING FOR CarWash Controls EQUIPMENT TO BE RUN BY AN ELECTRICAL CONTRACTOR AND MUST BE HOME-RUNNED FROM POINT TO POINT. SPLICING OF WIRES IS NOT ALLOWED.

GENERIC CARWASH W/ LPR "GATE CONTROL LAYOUT"

IDENTIFIER	WIRE TYPE	PROVIDED BY	TERMINATION LOCATIONS	TERMINATED BY
GA.1	18/9 (8 SIGNAL/1 SPARE)	GC	FROM TUNNEL CONTROLLER TO Sonny's P.S.#1 (Gate I/O and CALL BUTTON)	GC
GA.2	18/9 (8 SIGNAL/1 SPARE)	GC	FROM TUNNEL CONTROLLER TO Sonny's P.S.#2 (Gate I/O and CALL BUTTON)	GC
GB	18/2	GC	FROM TUNNEL CONTROLLER TO GATE#1 (MERGE LOOP)	GC
GC.1	18/4 (2 SIGNAL/2 SPARE)	GC	FROM Sonny's P.S. #1 TO GATE#1	GC
GC.2	18/4 (2 SIGNAL/2 SPARE)	GC	FROM Sonny's P.S. #2 TO GATE#2	GC
GD.1	18/6	GC	FROM TUNNEL CONTROLLER TO GATE#1	GC
GD.2	18/6	GC	FROM TUNNEL CONTROLLER TO GATE#2	GC
GE	MERGE LOOP	SONNYS	FROM GATE#1 TO MERGE LOOP	GC
GE.1	LOOP	SONNYS	FROM GATE#1 TO LOOP#1	GC
GE.2	LOOP	SONNYS	FROM GATE#2 TO LOOP#2	GC

NOTE: ALL WIRING FOR CarWash Controls EQUIPMENT TO BE RUN BY AN ELECTRICAL CONTRACTOR AND MUST BE HOME-RUNNED FROM POINT TO POINT. SPLICING OF WIRES IS NOT ALLOWED.

-DEDICATED POWER OUTLET. ONE UPS FOR EACH SONNY'S PAY STATION (1000/600). ONE UPS FOR POINT OF SALE (550/330)
 -ADDITIONAL CONDUIT MUST BE INSTALLED FOR ALL OTHER NON-CarWash Controls EQUIPMENT SUCH AS LIGHTS, MENUS SIGNS, CAMERAS, INTERCOMS, ETC.
 -WIRING OTHER THAN THE WIRING SHOWN FOR CarWash Controls EQUIPMENT MAY NOT BE RUN IN THE CONDUIT INSTALLED FOR CarWash Controls EQUIPMENT.
 -DEVIATIONS FROM CarWash Controls SPECIFICATIONS MAY RESULT IN THE VOIDING OF ANY AND ALL WARRANTIES OF CarWash Controls EQUIPMENT.

COPYRIGHT © 2019 CONN + ARCHITECTS, INC. ALL RIGHTS RESERVED. PRINTED IN THE UNITED STATES OF AMERICA. NO PART OF THESE DOCUMENTS MAY BE REPRODUCED, STORED IN A RETRIEVAL SYSTEM, OR TRANSMITTED IN ANY FORM OR BY ANY MEANS, ELECTRONIC OR MECHANICAL, INCLUDING PHOTOCOPYING, RECORDING, OR BY ANY INFORMATION STORAGE AND RETRIEVAL SYSTEM, WITHOUT THE PRIOR WRITTEN PERMISSION OF CONN + ARCHITECTS, INC.