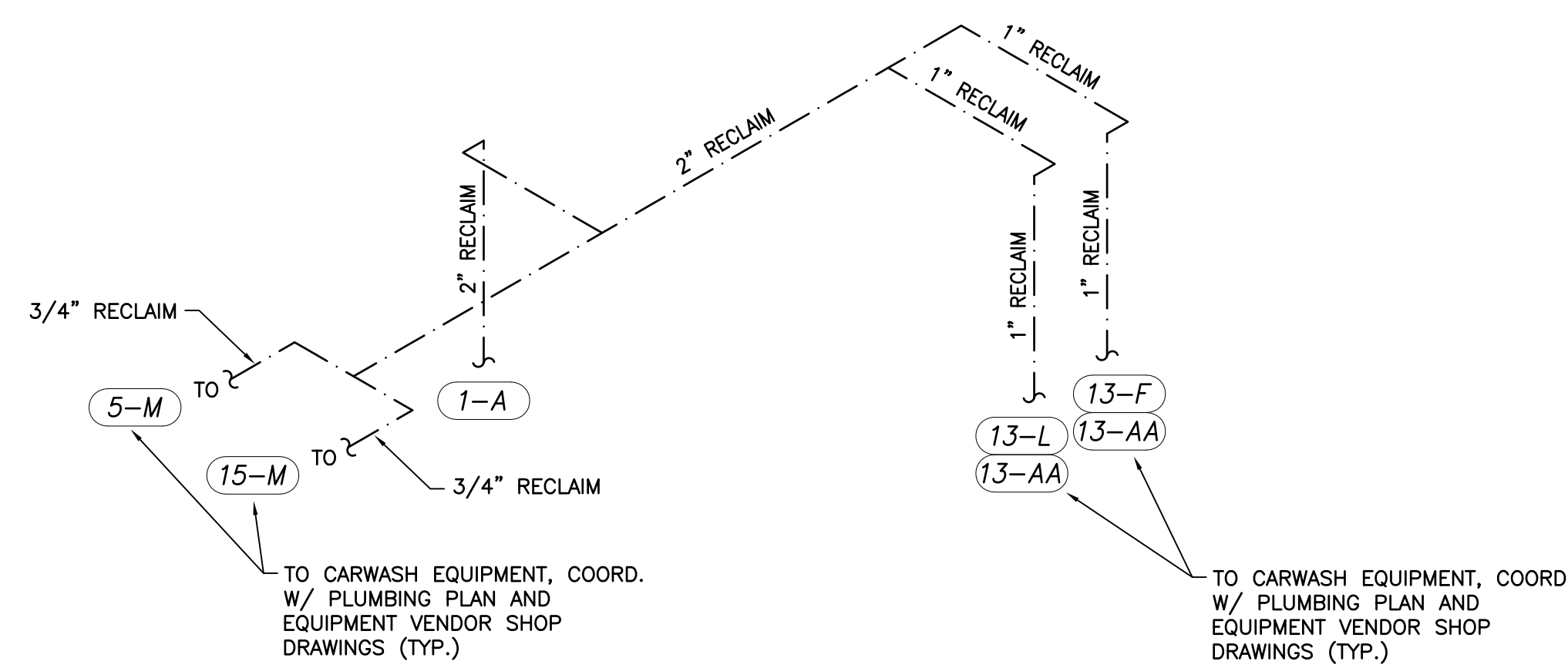
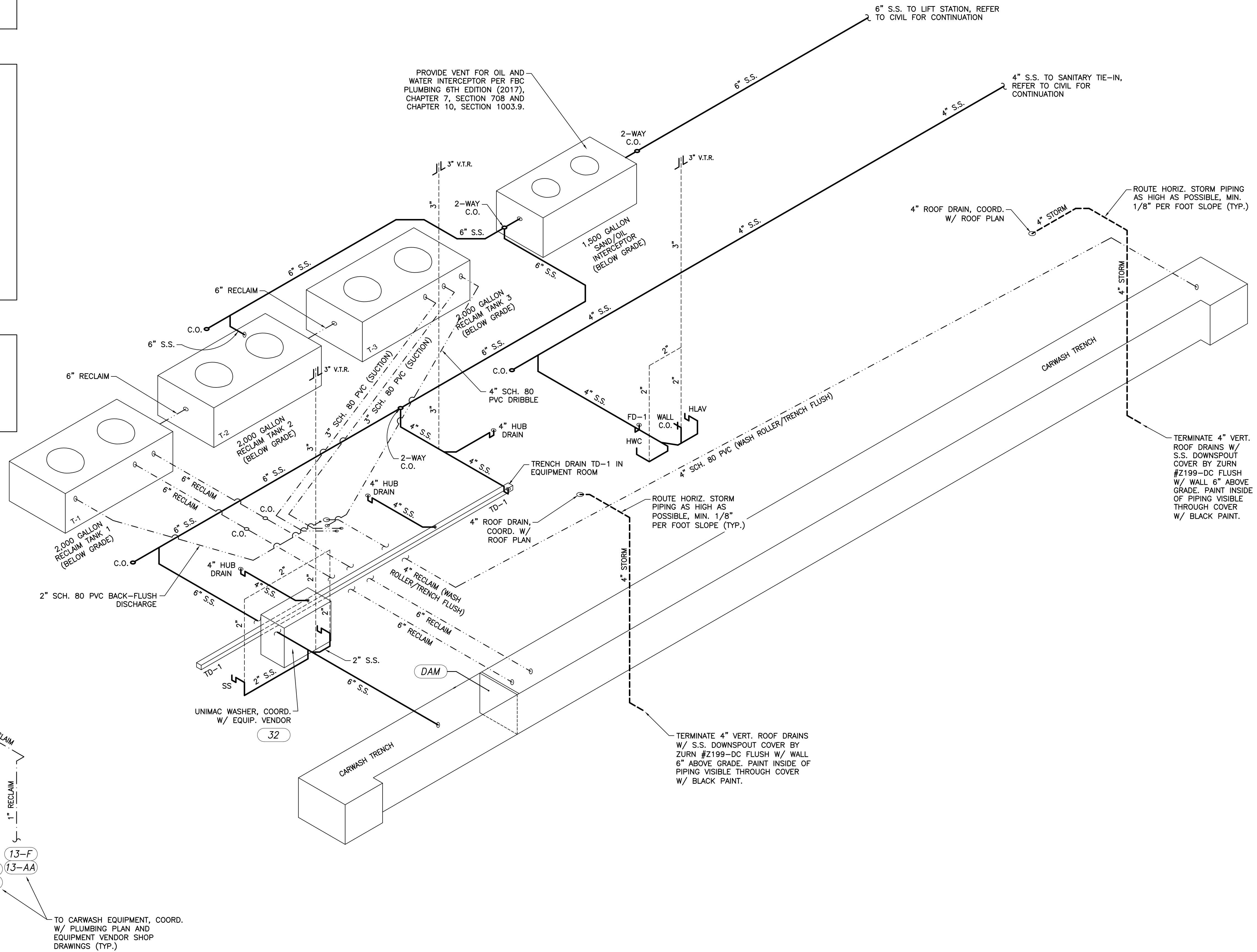


PLUMBING LEGEND	
---	COLD WATER PIPING
---	HOT WATER PIPING
---	RECLAIM WATER PIPING (OVERHEAD)
---	RECLAIM WATER PIPING (BELOW GRADE)
---	WASTE PIPING
---	STORMWATER PIPING
---	VENT PIPING
V.T.R.	VENT THRU ROOF
C.O.	CLEAN OUT
FD	FLOOR DRAIN

- GENERAL NOTES:**
- REFER TO SHEET A1.1.1 FOR EQUIPMENT SCHEDULE.
 - REFER TO SHEET P0.1 FOR PLUMBING NOTES AND PLUMBING FIXTURE SCHEDULE.
 - REFER TO SHEET P0.1 FOR PLUMBING DETAILS.
 - COORDINATE ALL EQUIPMENT REQUIREMENTS AND INSTALLATION WITH EQUIPMENT VENDOR AND SHOP DRAWINGS.
 - PIPING RUNS INDICATED ARE DIAGRAMMATIC ONLY, INTENDED TO SHOW CONNECTIVITY BETWEEN EQUIPMENT, FIXTURES, AND OTHER PLUMBING COMPONENTS. CONTRACTOR SHALL COORDINATE INSTALLATION AND ACTUAL ROUTING OF ALL PIPING WITH EQUIPMENT REQUIREMENTS AND EQUIPMENT VENDOR SHOP DRAWINGS. CONTRACTOR SHALL COORDINATE ALL PIPING INSTALLATION WITH UTILITIES, ELECTRICAL, MECHANICAL, BUILDING FOUNDATIONS, ETC.
 - MAINTAIN MINIMUM SLOPE OF 1/8" PER FOOT AT ALL SANITARY AND RECLAIM PIPING. FIELD-VERIFY ALL PIPING RUNS AND INVERT ELEVATIONS TO ENSURE PROPER DRAINAGE.
 - COORDINATE EXACT LOCATIONS OF BELOW-GRADE RECLAIM TANKS AND OIL AND WATER SEPARATOR W/ CIVIL.

CARWASH EQUIPMENT NOTE:
 REFER TO SONNY'S CARWASH EQUIPMENT DRAWINGS ENTITLED "19581-D9-CALIBER LAKE WALES" DATED 09-25-19 (REVISED 03-06-20) FOR ALL EQUIPMENT PLUMBING CONNECTIONS AND PROCESS PIPING (TYP.). PIPING RUNS NOT SHOWN ON THIS DRAWING, SUCH AS (BUT NOT LIMITED TO) R.O. WATER, REJECT WATER, SOFT WATER, RECLAIM WATER, CHEMICAL DISTRIBUTION, AND PNEUMATIC SHALL BE INSTALLED PER THE SONNY'S DRAWINGS.



2 OVERHEAD RECLAIM RISER
 P4.0 SCALE: N.T.S.

1 SANITARY SEWER / RECLAIM RISER
 P4.0 SCALE: N.T.S.

CALIBER CAPITAL CARWASH LAKE WALES, FLORIDA
PLUMBING RISER DIAGRAM - SANITARY SEWER / RECLAIM

CONN + ARCHITECTS
 1960-C Buford Boulevard Tallahassee, Florida 32308 | 850-878-9784
 www.CONNarchitects.com | Lic. No. AA-C001662

DATE	APR. 27, 2020
DRAWN BY	SAM
REVISED	
JOB NO.	19-249-1
DATE	
SHEET NUMBER	P4.0

COPYRIGHT © 2020 CONN + ARCHITECTS, INC. ALL RIGHTS RESERVED. NO PART OF THIS DOCUMENT MAY BE REPRODUCED, STORED IN A RETRIEVAL SYSTEM, OR TRANSMITTED IN ANY FORM OR BY ANY MEANS, ELECTRONIC, MECHANICAL, PHOTOCOPIING, RECORDING, OR OTHERWISE, WITHOUT THE PRIOR WRITTEN PERMISSION OF CONN + ARCHITECTS, INC.

100% CONSTRUCTION DOCUMENTS